

Form	ACO1 - Well Completion
Operator	Vincent Oil Corporation
Well Name	SWONGER 6-4
Doc ID	1702397

Tops

Name	Top	Datum
Heebner Shale	4360	(-1811)
Brown Limestone	4492	(-1943)
Lansing - Kansas City	4507	(-1958)
Stark Shale	4845	(-2296)
Base Kansas City	4966	(-2417)
Pawnee	5057	(-2508)
Cherokee Shale	5106	(-2557)
Base Penn Limestone	5206	(-2d657)
Mississippian	5234	(-2685)
RTD	5291	(-2742)

Form	ACO1 - Well Completion
Operator	Vincent Oil Corporation
Well Name	SWONGER 6-4
Doc ID	1702397

Casing

Purpose Of String	Size Hole Drilled	Size Casing Set	Weight	Setting Depth	Type Of Cement	Number of Sacks Used	Type and Percent Additives
Surface	12.25	8.625	23	655	MDC & Common	300	0-4% Gel, 3% CC & 1/2# Flo-seal/sx

Surf. csg.

QUALITY WELL SERVICE, INC.

8183

Federal Tax I.D. # 481187368

Home Office 30060 N. Hwy 281, Pratt, KS 67124

Mailing Address P.O. Box 468

Office 620-786-6992

Fax 620-672-3663

Todd's Cell 620-388-4967

Brady's Cell 620-727-6964

Date	Sec.	Twp.	Range	County	State	On Location	Finish	
12-11-22	4	29S	23W	FOXO	KS			
Lease	SWONGER		Well No.	64				Location
Contractor	Duke Oil Rig #1			Owner				
Type Job	Surface			To Quality Well Service, Inc. You are hereby requested to rent cementing equipment and furnish cementer and helper to assist owner or contractor to do work as listed.				
Hole Size	12 1/4		T.D.	657'				
Csg.	85/3 23"		Depth	655'				
Tbg. Size			Depth	Charge To				
Tool			Depth	VINCENT OIL Corp				
Cement Left in Csg.			Shoe Joint	42.75				
Meas Line			Displace	39.13				
EQUIPMENT				150' x 100' 3" x 1/2" PS				
Pumptrk	9 No.		Common					
Bulktrk	12 No.		Poz Mix					
Bulktrk	12 No.		Gel					
Pickup			Calcium					
JOB SERVICES & REMARKS				Hulls				
Rat Hole				Salt				
Mouse Hole				Flowseal				
Centralizers				Kol-Seal				
Baskets				Mud CLR 48				
D/V or Port Collar				CFL-117 or CD110 CAF 38				
Run 4 1/2 85/3 23" CSG SET 655'				Sand				
START CSG CSG on Bottom				Handling				
Hook up to CSG & BREAK CIRC W/ PIG				Mileage				
START Pumping H2O				870				
START MIX: Pump 150' x 100' 12" x 1/2"				Guide Shoe				
START MIX: Pump 150' x 100' 14.9' x 1/2"				Centralizer				
SHUT DOWN RELEASE 95' x 100' WOODEN PIG				Baskets				
START Disp				AFU Inserts				
PUSH DOWN 300'				Float Shoe				
CLOSE VALVE ON CSG				Latch Down				
ADD CIRC FROM JO3								
CIRC CNT TO DET				SERVIZ SURV. 1EA				
THANK YOU				Pumptrk Charge				
PLEASE CALL AGAIN				Mileage				
TODAY MAKE X2								
THANK YOU								
X Signature				Tax				
				Discount				
				Total Charge				

SALE. 439.

Quality Well Service, Inc.

**PO Box 468
Pratt, KS 67124**

Invoice

Date	Invoice #
12/12/2022	C-3116

Bill To
Vincent Oil Corporation 200 W. Douglas, Ste. 725 Wichita, KS 67202

P.O. No.	Terms	Lease Name
		Swonger #6-4

Description	Qty	Rate	Amount
8 5/8" Head & Manifold	1	250.00	250.00T
8 5/8 Baffle Plate	1	120.00	120.00T
8 5/8 Wooden Plug	1	120.00	120.00T
Common	150	16.75	2,512.50
MDC	150	18.00	2,700.00
Gel	564	0.22	124.08
Calcium	846	1.20	1,015.20
Flo-Seal	150	3.70	555.00
SFC 501-1500'	1	1,000.00	1,000.00
Handling	332	2.10	697.20
.10 * sacks * miles	12,000	0.10	1,200.00
Service Supervisor	1	325.00	325.00
LMV	65	4.50	292.50
Heavy Equipment Mileage	195	9.50	1,852.50
Customer Discount		-3,829.20	-3,829.20
Discount Expires after 30 days from the date of the invoice		0.00	0.00
Swonger #6-4 Ford Co.			
PLEASE REMIT TO ABOVE COMPANY & ADDRESS! Thank you for your business!		Subtotal	\$8,934.78
		Sales Tax (7.5%)	\$25.73
		Total	\$8,960.51

QUASAR ENERGY SERVICES, INC.

3288 FM 51

Gainesville, Texas 76240

Office: 940-612-3336

Fax: 940-612-3336 | qesi@qeserve.com

Form 185-21

12/19/22

CEMENTING JOB LOG

CEMENTING JOB LOG

[illegible]



Office: 940-612-3336

FRACTURING	 	ACID	 	CEMENT	 	NITROGEN
-------------------	----------	-------------	----------	---------------	----------	-----------------

V
L

Invoice

Date	Invoice #
1/6/2023	149682

Bill To
Vincent Oil Corporation 200 W. Douglas Ace 725 Wichita, KS 67202

As of 09/22/2015 any invoice with a discount must be paid within 60 days of the invoice date. After 60 days the discount will be removed and the invoice will reflect the full price.

			Well
Swonger 6-4			
Description	Quantity	Rate	Amount
Pickup Mileage	100	5.31	531.00
Equipment Mileage	200	8.30	1,660.00
Pump Charge	1	3,307.50	3,307.50
Class A Lite Cement	170	19.54	3,321.80
Defoamer	2	46.31	92.62
Gel	300	0.34	102.00
		Total	\$9,014.92
		Payments/Credits	\$0.00
		Balance Due	\$9,014.92

All accounts are past due net 30 days following the date of invoice. A finance charge of 1.5% per month or 18% annual percentage rate will be charged on all past due accounts.



TRILOBITE
TESTING, INC.

DRILL STEM TEST REPORT

Vincent Oil Corporation

200 W Douglas Ave #725
Wichita, KS 67202

ATTN: Tom Dudgeon

4-29S-23W Ford

Swonger 6-4

Job Ticket: 69278

DST#: 1

Test Start: 2022.12.16 @ 19:42:00

GENERAL INFORMATION:

Formation: **Pawnee**

Deviated: No Whipstock: ft (KB)

Time Tool Opened: 22:28:02

Time Test Ended: 05:27:47

Test Type: Conventional Bottom Hole (Initial)

Tester: Leal Cason

Unit No: 72

Interval: 5045.00 ft (KB) To 5075.00 ft (KB) (TVD)

Total Depth: 5075.00 ft (KB) (TVD)

Hole Diameter: 7.88 inches Hole Condition: Good

Reference Elevations: 2549.00 ft (KB)

2537.00 ft (CF)

KB to GR/CF: 12.00 ft

Serial #: 6752 Inside

Press@RunDepth: 130.06 psig @ 5051.00 ft (KB)

Start Date: 2022.12.16

End Date:

2022.12.17

Start Time: 19:42:01

End Time:

05:27:47

Capacity: psig

Last Calib.: 2022.12.17

Time On Btm: 2022.12.16 @ 22:26:17

Time Off Btm: 2022.12.17 @ 03:02:02

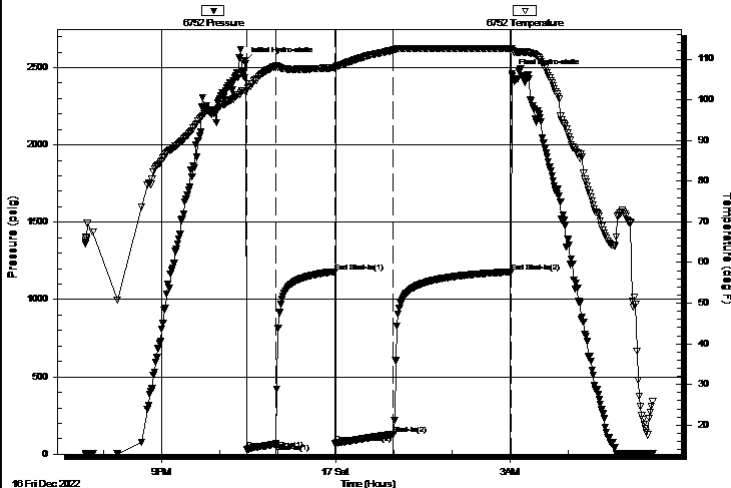
TEST COMMENT: IF: Fair Blow , Built to 7.66"

IS: No Blow Back

FF: Fair Blow , Built to 8.68"

FS: No Blow Back

Pressure vs. Time



PRESSURE SUMMARY

Time (Min.)	Pressure (psig)	Temp (deg F)	Annotation
0	2541.73	102.32	Initial Hydro-static
2	31.29	102.27	Open To Flow (1)
32	66.91	108.39	Shut-In(1)
93	1180.14	107.87	End Shut-In(1)
93	71.96	107.74	Open To Flow (2)
153	130.06	112.17	Shut-In(2)
275	1179.34	112.54	End Shut-In(2)
276	2460.38	112.51	Final Hydro-static

Recovery

Length (ft)	Description	Volume (bbl)
0.00	243' GIP	0.00
191.00	MCW 20%M 80%W	2.68

Gas Rates

	Choke (inches)	Pressure (psig)	Gas Rate (Mcf/d)
--	----------------	-----------------	------------------



TRILOBITE
TESTING, INC.

DRILL STEM TEST REPORT

Vincent Oil Corporation

200 W Douglas Ave #725
Wichita, KS 67202

ATTN: Tom Dudgeon

4-29S-23W Ford

Swonger 6-4

Job Ticket: 69278

DST#: 1

Test Start: 2022.12.16 @ 19:42:00

GENERAL INFORMATION:

Formation: **Pawnee**

Deviated: No Whipstock: ft (KB)

Time Tool Opened: 22:28:02

Time Test Ended: 05:27:47

Test Type: Conventional Bottom Hole (Initial)

Tester: Leal Cason

Unit No: 72

Interval: 5045.00 ft (KB) To 5075.00 ft (KB) (TVD)

Total Depth: 5075.00 ft (KB) (TVD)

Hole Diameter: 7.88 inches Hole Condition: Good

Reference Elevations: 2549.00 ft (KB)

2537.00 ft (CF)

KB to GR/CF: 12.00 ft

Serial #: 8365 Outside

Press@RunDepth: psig @ 5051.00 ft (KB)

Start Date: 2022.12.16

End Date:

2022.12.17

Start Time: 19:42:01

End Time:

05:27:47

Capacity: psig

Last Calib.:

2022.12.17

Time On Btm:

Time Off Btm:

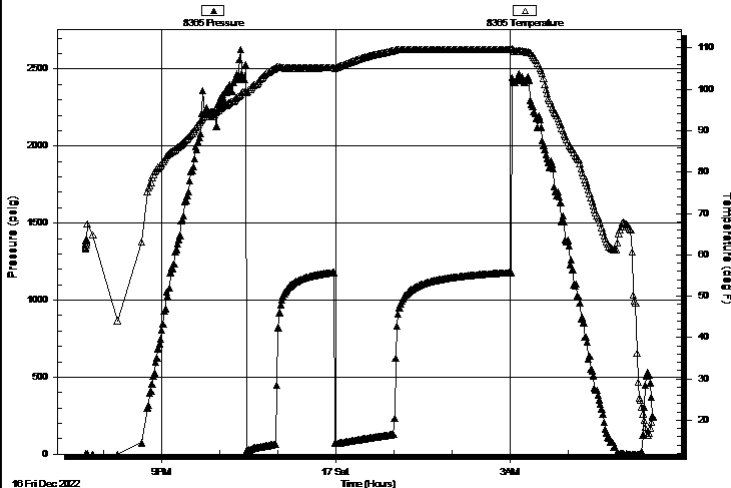
TEST COMMENT: IF: Fair Blow , Built to 7.66"

IS: No Blow Back

FF: Fair Blow , Built to 8.68"

FS: No Blow Back

Pressure vs. Time



PRESSURE SUMMARY

Time (Min.)	Pressure (psig)	Temp (deg F)	Annotation
-------------	-----------------	--------------	------------

Recovery

Length (ft)	Description	Volume (bbl)
0.00	243' GIP	0.00
191.00	MCW 20%M 80%W	2.68

Gas Rates

	Choke (inches)	Pressure (psig)	Gas Rate (Mcf/d)
--	----------------	-----------------	------------------



TRILOBITE
TESTING, INC.

DRILL STEM TEST REPORT

FLUID SUMMARY

Vincent Oil Corporation

4-29S-23W Ford

200 W Douglas Ave #725
Wichita, KS 67202

Swonger 6-4

Job Ticket: 69278

DST#: 1

ATTN: Tom Dudgeon

Test Start: 2022.12.16 @ 19:42:00

Mud and Cushion Information

Mud Type: Gel Chem

Mud Weight: 9.00 lb/gal

Viscosity: 58.00 sec/qt

Water Loss: 10.99 in³

Resistivity: ohm.m

Salinity: 6300.00 ppm

Filter Cake: 0.02 inches

Cushion Type:

Cushion Length:

Cushion Volume:

Gas Cushion Type:

Gas Cushion Pressure:

ft

bbl

psig

Oil API:

Water Salinity: 62000 ppm

deg API

Recovery Information

Recovery Table

Length ft	Description	Volume bbl
0.00	243' GIP	0.000
191.00	MCW 20%M 80%W	2.679

Total Length: 191.00 ft Total Volume: 2.679 bbl

Num Fluid Samples: 0

Num Gas Bombs: 0

Serial #:

Laboratory Name:

Laboratory Location:

Recovery Comments: Rw was .25 @ 33 degrees

Serial #: 6752

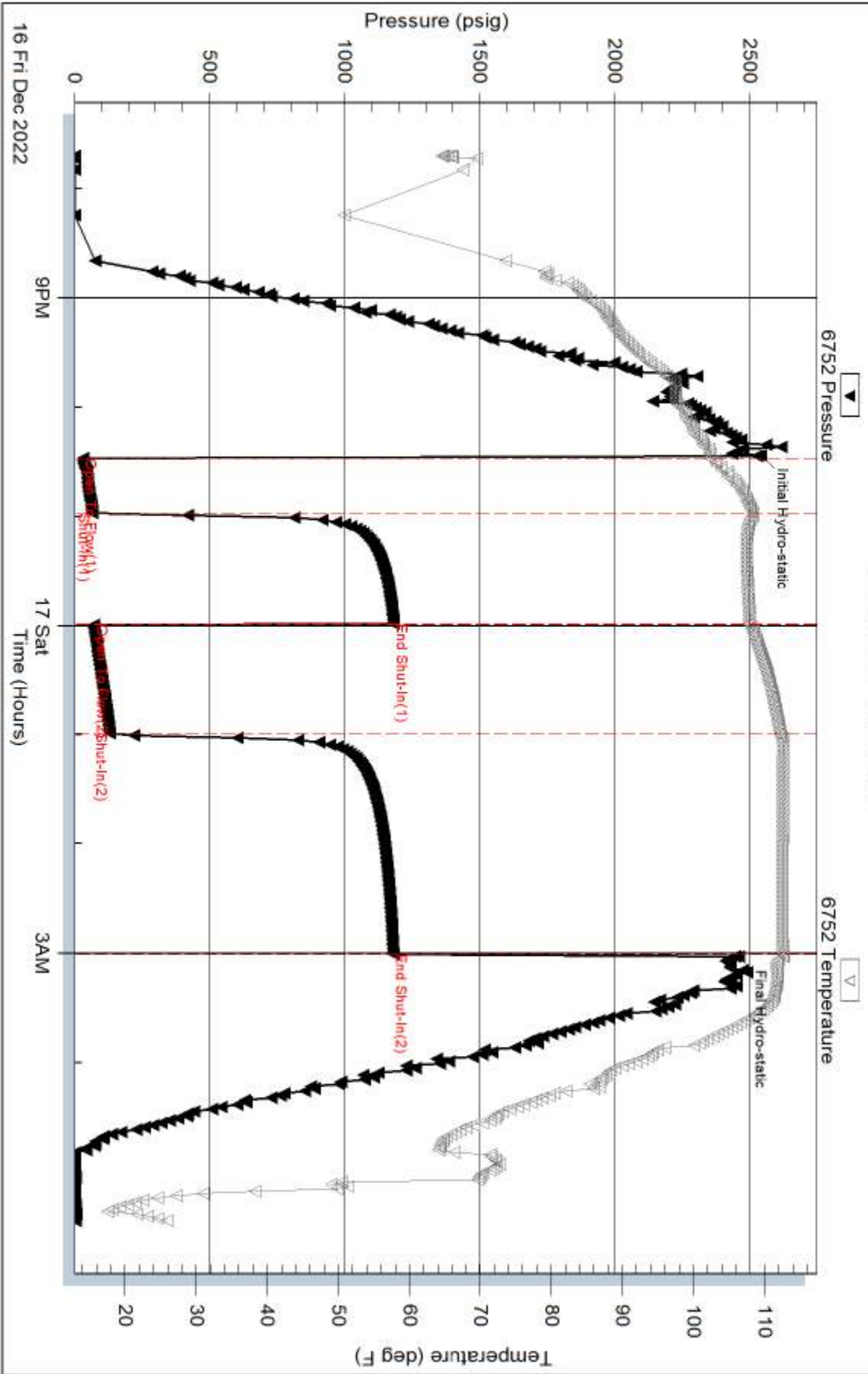
Inside

Vincent Oil Corporation

Sw onger 6-4

DST Test Number: 1

Pressure vs. Time



Trilobite Testing, Inc

Ref. No: 69278

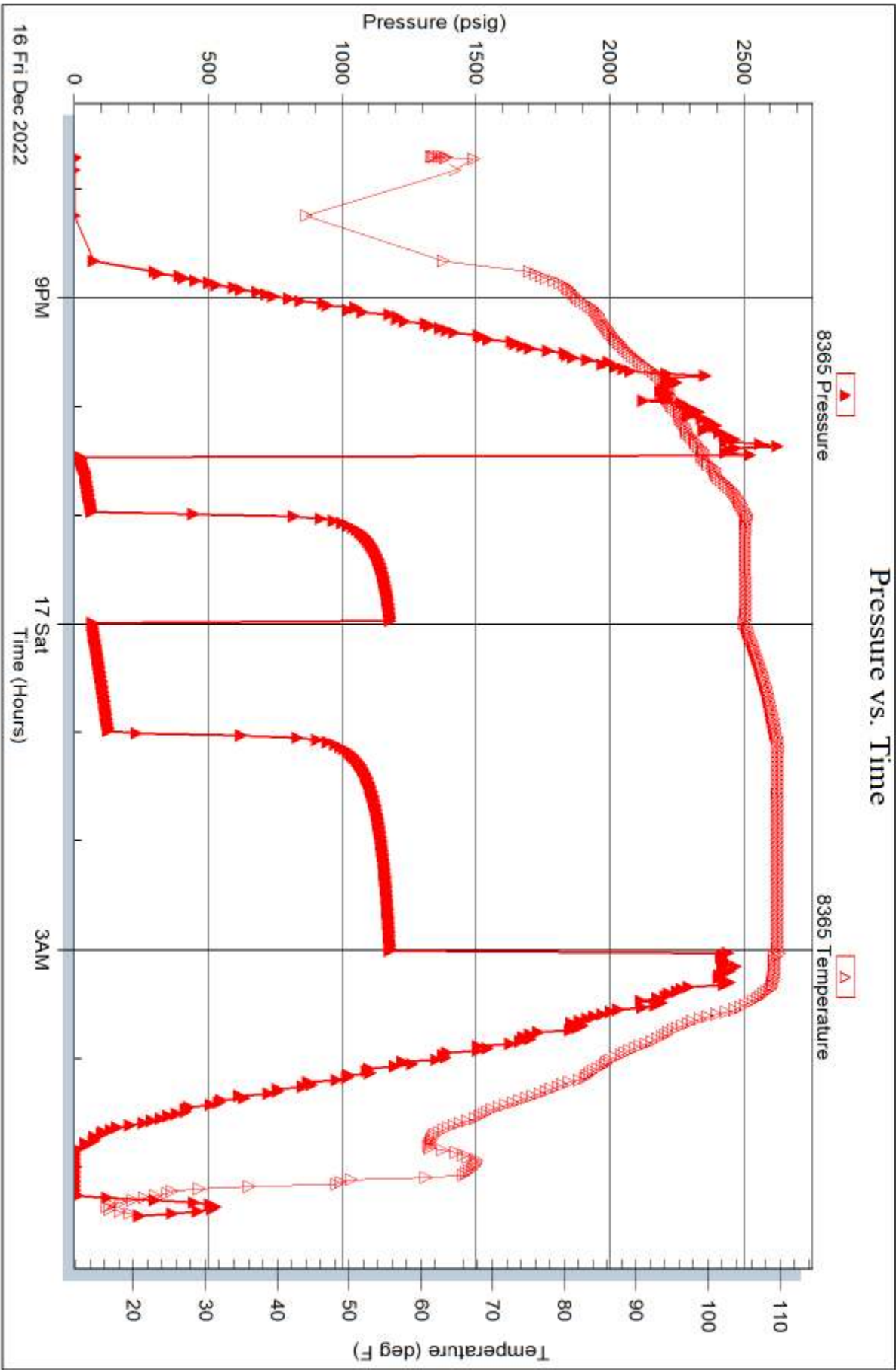
Printed: 2022.12.17 @ 08:21:24

Serial #: 8365

Outside Vincent Oil Corporation

Sw onger 6-4

DST Test Number: 1





TRILOBITE
TESTING, INC.

DRILL STEM TEST REPORT

Vincent Oil Corporation

4-29S-23W Ford

200 W Douglas Ave #725
Wichita, KS 67202

Swonger 6-4

Job Ticket: 69279

DST#: 2

ATTN: Tom Dudgeon

Test Start: 2022.12.18 @ 05:23:00

GENERAL INFORMATION:

Formation: **Mississippi**

Deviated: No Whipstock: ft (KB)

Time Tool Opened: 08:36:02

Time Test Ended: 15:24:47

Test Type: Conventional Bottom Hole (Reset)

Tester: Leal Cason

Unit No: 72

Interval: 5250.00 ft (KB) To 5266.00 ft (KB) (TVD)

Total Depth: 5266.00 ft (KB) (TVD)

Hole Diameter: 7.88 inches Hole Condition: Good

Reference Elevations: 2549.00 ft (KB)

2537.00 ft (CF)

KB to GR/CF: 12.00 ft

Serial #: 6752 Inside

Press@RunDepth: 30.61 psig @ 5256.00 ft (KB)

Start Date: 2022.12.18

End Date:

2022.12.18

Start Time: 05:23:01

End Time:

15:24:47

Capacity: psig

Last Calib.: 2022.12.18

Time On Btm: 2022.12.18 @ 08:34:17

Time Off Btm: 2022.12.18 @ 13:23:17

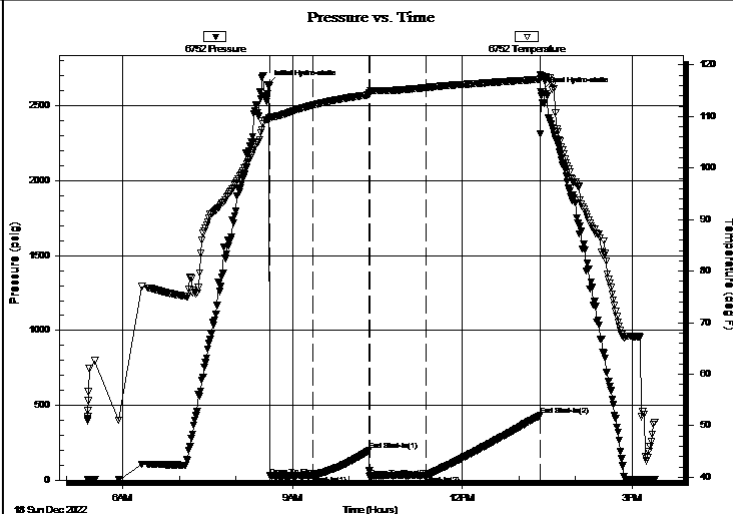
TEST COMMENT: IF: Fair Blow , Built to 5.22"

IS: No Blow Back

FF: Fair Blow , BOB in 41 minutes, Built to 15"

FS: No Blow Back

PRESSURE SUMMARY



Time (Min.)	Pressure (psig)	Temp (deg F)	Annotation
0	2639.22	109.35	Initial Hydro-static
2	28.16	109.61	Open To Flow (1)
48	33.05	112.23	Shut-In(1)
107	197.43	114.22	End Shut-In(1)
108	22.27	114.64	Open To Flow (2)
168	30.61	115.60	Shut-In(2)
289	432.76	117.27	End Shut-In(2)
289	2597.19	118.16	Final Hydro-static

Recovery

Length (ft)	Description	Volume (bbl)
0.00	280' GIP	0.00
30.00	SOCM 4%O 96%M	0.42

Gas Rates

	Choke (inches)	Pressure (psig)	Gas Rate (Mcf/d)
--	----------------	-----------------	------------------

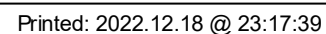
* Recovery from multiple tests



Test Start: 2022.12.18 @ 05:23:00

KB to GR/CF: 12.00 ft

FSI: No Blow Back





TRILOBITE
TESTING, INC.

DRILL STEM TEST REPORT

FLUID SUMMARY

Vincent Oil Corporation

4-29S-23W Ford

200 W Douglas Ave #725
Wichita, KS 67202

Swonger 6-4

Job Ticket: 69279

DST#: 2

ATTN: Tom Dudgeon

Test Start: 2022.12.18 @ 05:23:00

Mud and Cushion Information

Mud Type: Gel Chem

Mud Weight: 9.00 lb/gal

Viscosity: 74.00 sec/qt

Water Loss: 11.19 in³

Resistivity: ohm.m

Salinity: 8700.00 ppm

Filter Cake: 0.02 inches

Cushion Type:

Cushion Length:

Cushion Volume:

Gas Cushion Type:

Gas Cushion Pressure:

ft

bbl

psig

Oil API:

Water Salinity:

deg API

ppm

Recovery Information

Recovery Table

Length ft	Description	Volume bbl
0.00	280' GIP	0.000
30.00	SOCM 4%O 96%M	0.421

Total Length: 30.00 ft

Total Volume: 0.421 bbl

Num Fluid Samples: 0

Num Gas Bombs: 0

Serial #:

Laboratory Name:

Laboratory Location:

Recovery Comments:

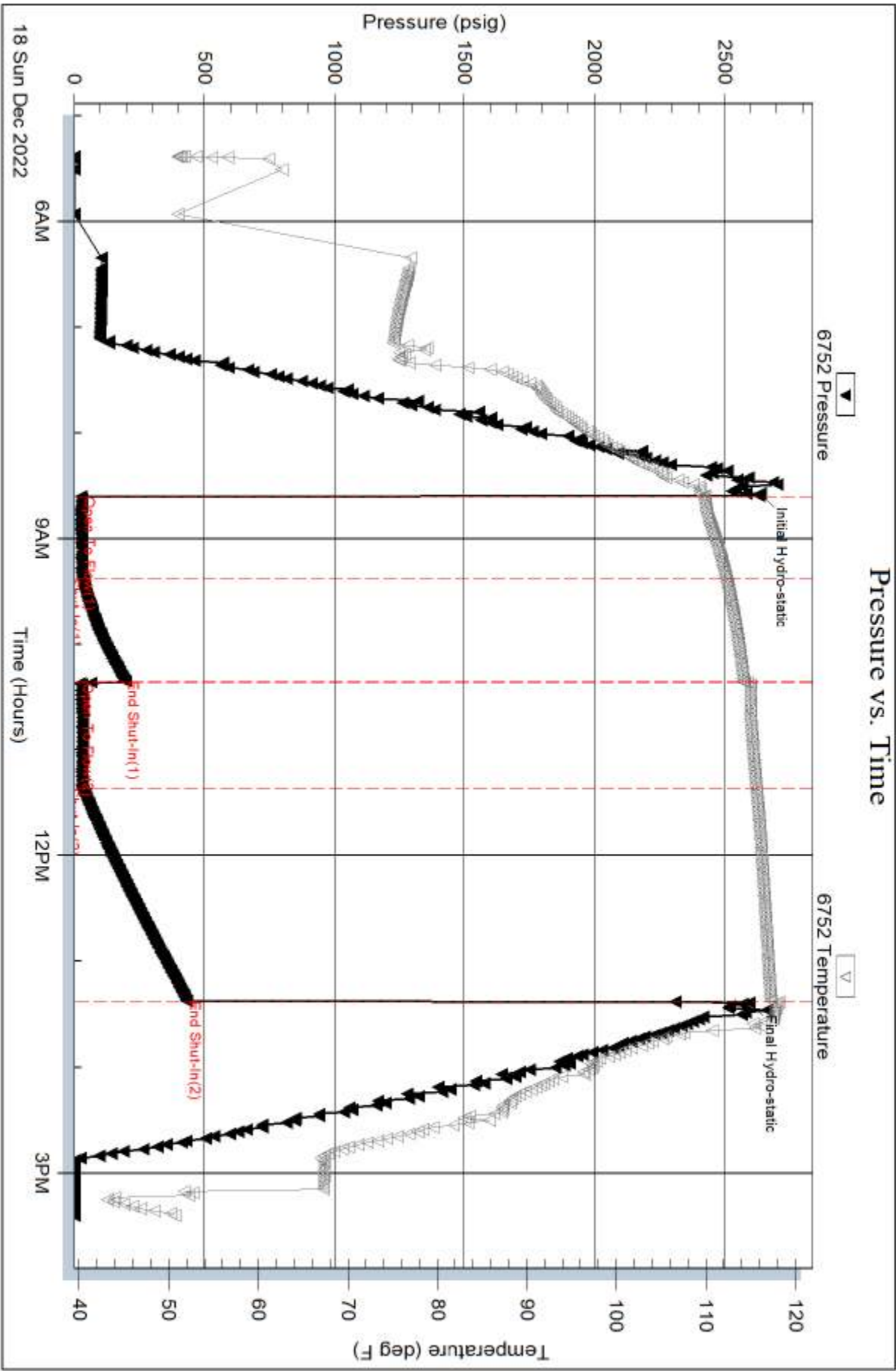
Serial #: 6752

Inside

Vincent Oil Corporation

Sw onger 6-4

DST Test Number: 2

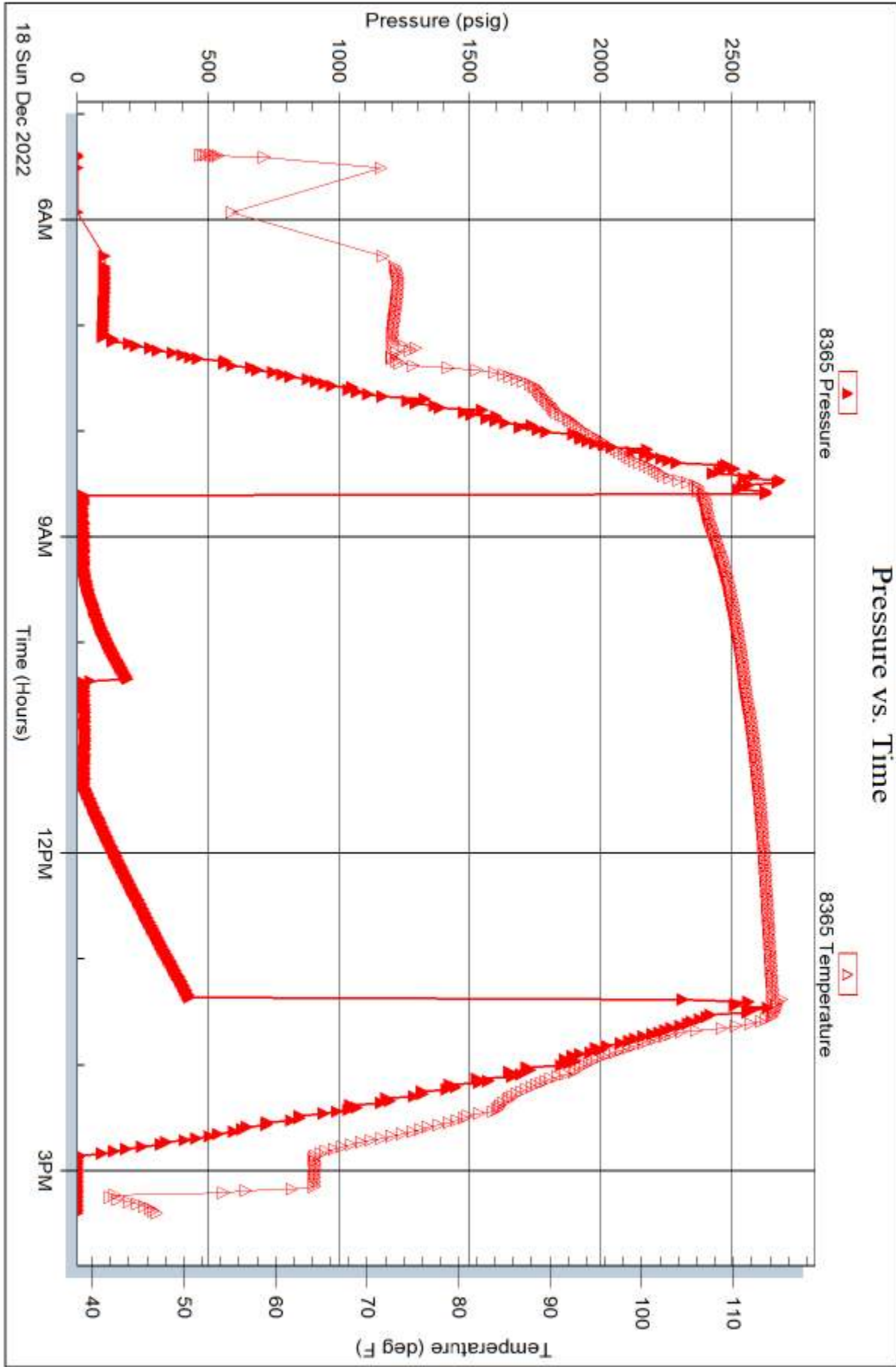


Serial #: 8365

Outside Vincent Oil Corporation

Sw onger 6-4

DST Test Number: 2





TRILOBITE
TESTING, INC.

DRILL STEM TEST REPORT

Vincent Oil Corporation

4-29S-23W Ford

200 W Douglas Ave #725
Wichita, KS 67202

Swonger 6-4

Job Ticket: 69280

DST#: 3

ATTN: Tom Dudgeon

Test Start: 2022.12.19 @ 00:00:00

GENERAL INFORMATION:

Formation: **Mississippi**

Deviated: No Whipstock: ft (KB)

Time Tool Opened: 02:30:17

Time Test Ended: 09:47:47

Test Type: Conventional Bottom Hole (Reset)

Tester: Leal Cason

Unit No: 72

Interval: 5266.00 ft (KB) To 5291.00 ft (KB) (TVD)

Reference Elevations: 2549.00 ft (KB)

Total Depth: 5291.00 ft (KB) (TVD)

2537.00 ft (CF)

Hole Diameter: 7.88 inches Hole Condition: Good

KB to GR/CF: 12.00 ft

Serial #: 6752 Inside

Press@RunDepth: 85.39 psig @ 5272.00 ft (KB)

Capacity: psig

Start Date: 2022.12.19

End Date:

2022.12.19

Last Calib.: 2022.12.19

Start Time: 00:00:01

End Time:

09:47:47

Time On Btm: 2022.12.19 @ 02:28:32

Time Off Btm: 2022.12.19 @ 07:43:17

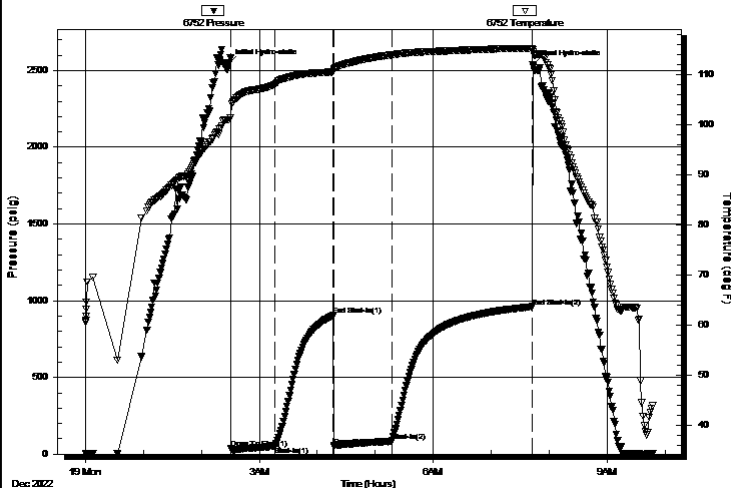
TEST COMMENT: IF: Strong Blow , BOB in 7 minutes, Built to 56.87"

IS: No Blow Back

FF: Strong Blow , BOB in 1 minute, Built to 75.24"

FS: No Blow Back

Pressure vs. Time



PRESSURE SUMMARY

Time (Min.)	Pressure (psig)	Temp (deg F)	Annotation
0	2547.78	101.08	Initial Hydro-static
2	34.86	101.53	Open To Flow (1)
48	53.63	108.15	Shut-In(1)
108	903.26	110.65	End Shut-In(1)
109	52.02	111.22	Open To Flow (2)
169	85.39	114.03	Shut-In(2)
315	961.32	115.30	End Shut-In(2)
315	2536.03	115.09	Final Hydro-static

Recovery

Length (ft)	Description	Volume (bbl)
0.00	2527' GIP	0.00
62.00	MCW 30%M 70%W	0.87
77.00	SOCM 10%O 90%M	1.08

Gas Rates

	Choke (inches)	Pressure (psig)	Gas Rate (Mcf/d)
--	----------------	-----------------	------------------

* Recovery from multiple tests



TRILOBITE
TESTING, INC.

DRILL STEM TEST REPORT

Vincent Oil Corporation

4-29S-23W Ford

200 W Douglas Ave #725
Wichita, KS 67202

Swonger 6-4

Job Ticket: 69280

DST#: 3

ATTN: Tom Dudgeon

Test Start: 2022.12.19 @ 00:00:00

GENERAL INFORMATION:

Formation: **Mississippi**

Deviated: No Whipstock: ft (KB)

Time Tool Opened: 02:30:17

Time Test Ended: 09:47:47

Test Type: Conventional Bottom Hole (Reset)

Tester: Leal Cason

Unit No: 72

Interval: 5266.00 ft (KB) To 5291.00 ft (KB) (TVD)

Reference Elevations: 2549.00 ft (KB)

Total Depth: 5291.00 ft (KB) (TVD)

2537.00 ft (CF)

Hole Diameter: 7.88 inches Hole Condition: Good

KB to GR/CF: 12.00 ft

Serial #: 8365 Outside

Press@RunDepth: psig @ 5272.00 ft (KB)

Capacity: psig

Start Date: 2022.12.19

End Date:

2022.12.19

Last Calib.:

2022.12.19

Start Time: 00:00:01

End Time:

09:45:47

Time On Btm:

Time Off Btm:

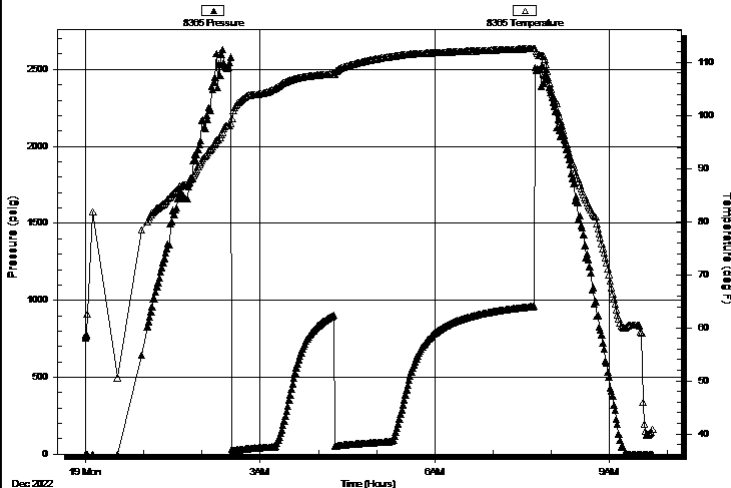
TEST COMMENT: IF: Strong Blow , BOB in 7 minutes, Built to 56.87"

IS: No Blow Back

FF: Strong Blow , BOB in 1 minute, Built to 75.24"

FS: No Blow Back

Pressure vs. Time



PRESSURE SUMMARY

Time (Min.)	Pressure (psig)	Temp (deg F)	Annotation
-------------	-----------------	--------------	------------

Recovery

Length (ft)	Description	Volume (bbl)
0.00	2527' GIP	0.00
62.00	MCW 30%M 70%W	0.87
77.00	SOCM 10%O 90%M	1.08

Gas Rates

	Choke (inches)	Pressure (psig)	Gas Rate (Mcf/d)
--	----------------	-----------------	------------------

* Recovery from multiple tests



TRILOBITE
TESTING, INC.

DRILL STEM TEST REPORT

FLUID SUMMARY

Vincent Oil Corporation

4-29S-23W Ford

200 W Douglas Ave #725
Wichita, KS 67202

Swonger 6-4

Job Ticket: 69280

DST#: 3

ATTN: Tom Dudgeon

Test Start: 2022.12.19 @ 00:00:00

Mud and Cushion Information

Mud Type: Gel Chem

Mud Weight: 9.00 lb/gal

Viscosity: 58.00 sec/qt

Water Loss: 9.19 in³

Resistivity: ohm.m

Salinity: 8400.00 ppm

Filter Cake: 0.02 inches

Cushion Type:

Cushion Length:

Cushion Volume:

Gas Cushion Type:

Gas Cushion Pressure:

ft

bbl

psig

Oil API:

Water Salinity: 52000 ppm

deg API

Recovery Information

Recovery Table

Length ft	Description	Volume bbl
0.00	2527' GIP	0.000
62.00	MCW 30%M 70%W	0.870
77.00	SOCM 10%O 90%M	1.080

Total Length: 139.00 ft

Total Volume: 1.950 bbl

Num Fluid Samples: 0

Num Gas Bombs: 0

Serial #:

Laboratory Name:

Laboratory Location:

Recovery Comments: RW was .25 @ 41 degrees

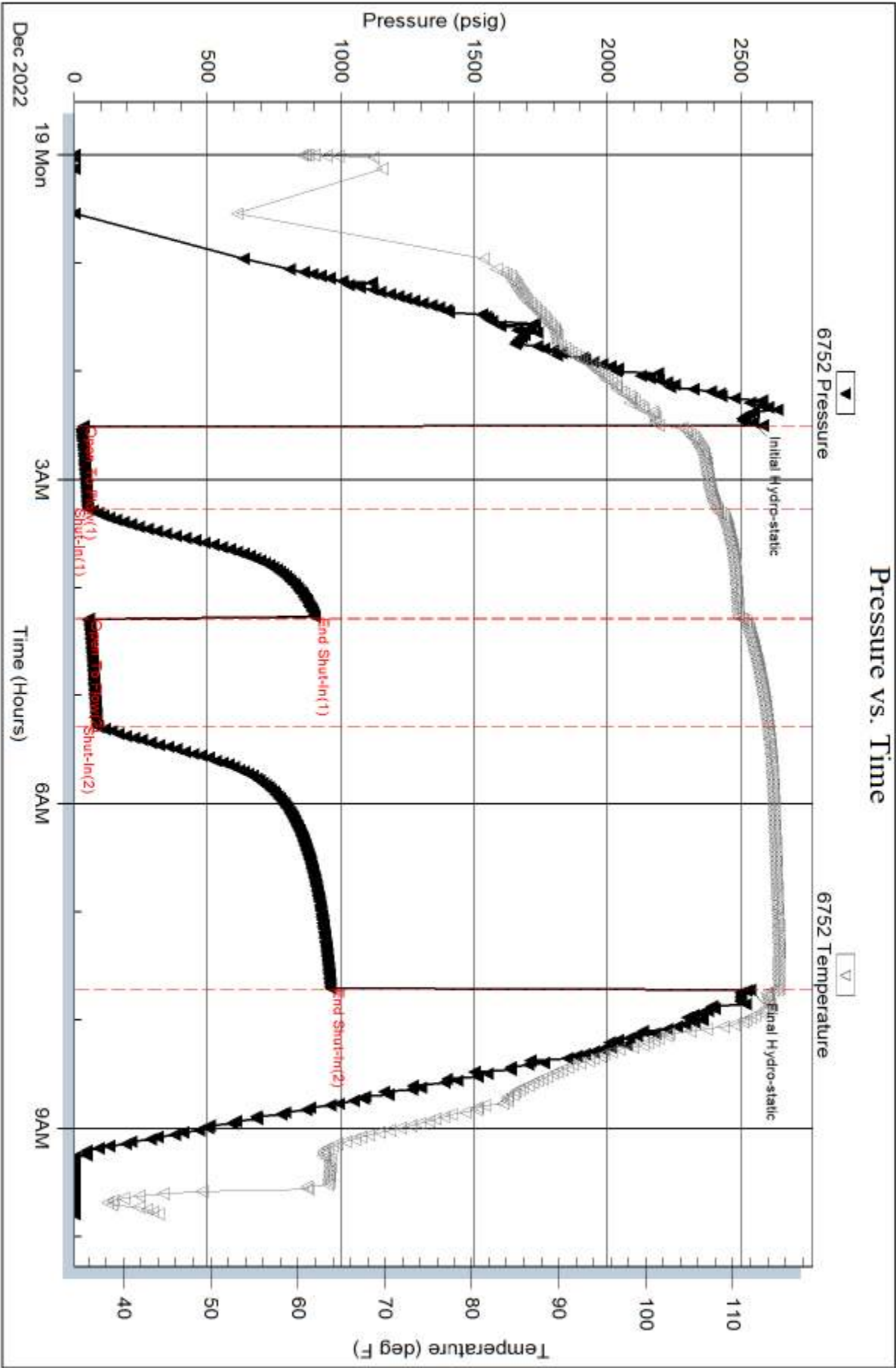
Serial #: 6752

Inside

Vincent Oil Corporation

Swinger 6-4

DST Test Number: 3

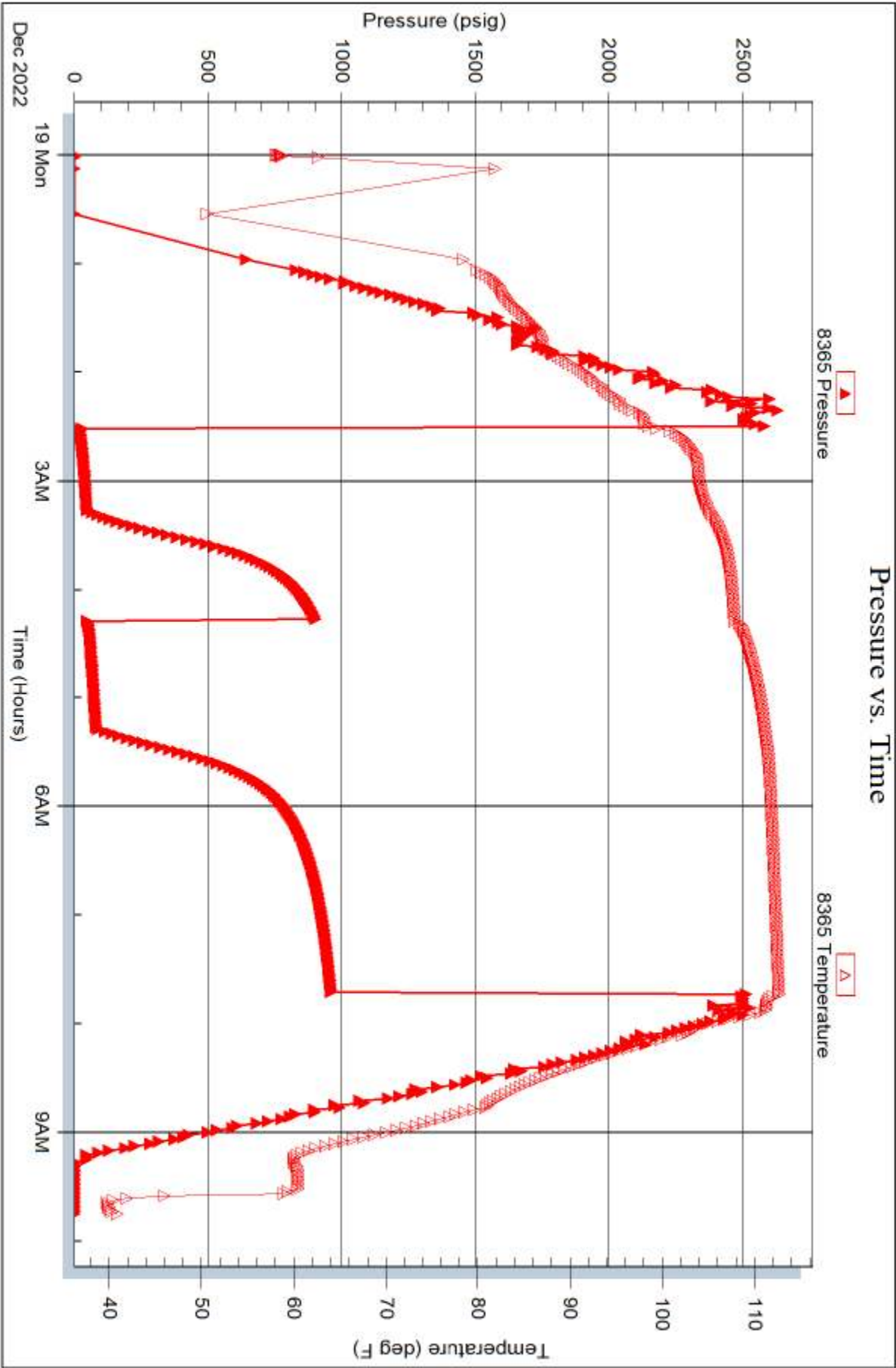


Serial #: 8365

Outside Vincent Oil Corporation

Sw onger 6-4

DST Test Number: 3





Scale 1:240 Imperial

Well Name:	SWONGER 6-4	
Surface Location:	357 FNL 330 FEL 4-29-23W	
Bottom Location:		
API:	15-057-21082-0000	
License Number:	5004	
Spud Date:	12/10/2022	Time: 5:00 PM
Region:	MIDCON	
Drilling Completed:	12/18/2022	Time: 7:33 PM
Surface Coordinates:	357 FNL & 330 FEL	
Bottom Hole Coordinates:		
Ground Elevation:	2537.00ft	
K.B. Elevation:	2549.00ft	
Logged Interval:	4200.00ft	To: 0.00ft
Total Depth:	5291.00ft	
Formation:	MISSISSIPPIAN	
Drilling Fluid Type:	VIS/CHEMICAL MUD	

OPERATOR

Company:	VINCENT OIL CORPORATION	
Address:	200 W DOUGLAS AVE	
	STE 725	
	WICHITA, KS 67202	
Contact Geologist:	DICK JORDAN	
Contact Phone Nbr:	316.262.3573	
Well Name:	SWONGER 6-4	
Location:	357 FNL 330 FEL 4-29-23W	
API:	15-057-21082-0000	
Pool:	DEVELOPMENT	Field: MULBERRY CREEK
State:	KS	Country: USA

CONTRACTOR

Contractor:	DUKE DRILLING CO., INC.	
Rig #:	1	
Rig Type:	MUD ROTARY	
Spud Date:	12/10/2022	Time: 5:00 PM
TD Date:	12/18/2022	Time: 7:33 PM
Rig Release:	12/19/2022	Time: 10:30 PM

LOGGED BY

Company:	VINCENT OIL CORPORATION
Address:	

Phone Nbr: 316.262.3573
Logged By: Geologist

Name: TOM DUDGEON

SURFACE CO-ORDINATES

Well Type: Vertical
Longitude: -99.8328969
Latitude: 37.5565204
N/S Co-ord: 357 FNL
E/W Co-ord: 330 FEL

ELEVATIONS

K.B. Elevation: 2549.00ft Ground Elevation: 2537.00ft
K.B. to Ground: 12.00ft

TOTAL DEPTH

Measurement Type:	Measurement Depth:	TVD:
RTD	5291.00	5291.00
LTD	0.00	0.00

DRILLING FLUID SUMMARY

Type	Date	From Depth	To Depth
CHEMICAL MUD	12/13/2022	3795.00ft	5291.00ft

OPEN HOLE LOGS

Logging Company:
Logging Engineer:
Truck #:
Logging Date: Time Spent:
Logs Run: 0 # Logs Run Successful: 0

LOGS RUN

Tool	Logged Interval	Logged Interval	Hours	Remarks	Run #
	0.00ft	0.00ft	0.00		0

LOGGING OPERATION SUMMARY

Date	From	To	Description Of Operation
12/12/2022	0.00ft	0.00ft	

COMMENT

NO LOGS RUN

NOTES

Samples based on Dunhams Classification System
MS - Mudstone - <10% grains
WS - Wackestone - >10% grains, mud supported
PS - Packstone - grainsupported
GS - Grainstone - lacks mud
BS - Boundstone - components bound during deposition
Crystalline - texture not recognizable

STRAIGHT HOLE SURVEY

Degree	Depth
1°	657'
1°	1653'
3/4°	2691'
1°	3669'
1°	4237'
3/4°	5291'

REFERENCE WELL:

A	B
Vincent Oil Corporation	Vincent Oil Corporation
Perkins #4-3	Davis #2-33
496' FNL & 364' FWL	330' FSL & 330' FEL
3-29-23W	33-28-23W

SAMPLE TOPS

REF. WELL

ELECTRIC LOG

REF. WELL

		A	B
Heebner Shale	4360 (-1811)	+9	Flt
Brown Limestone	4492 (-1943)	+15	+5

A B

Lansing / Kansas City	4507 (-1958)	+10	+2
Stark Shale	4845 (-2296)	+2	+4
Base Kansas City	4966 (-2417)	+3	+4
Marmaton	4984 (-2435)	+7	+2
Pawnee	5057 (-2508)	+4	-3
Cherokee Shale	5106 (-2557)	+4	+1
Base Penn Limestone	5206 (-2657)	+3	-3
Mississippian	5234 (-2685)	+3	-7
RTD	5291 (-2742)		

12/10/2022 Moved in rig and rigged up, Spud well in at 5:00 PM 12/10/2022, drilled 12.25" surface hole to 657', CTCH, ran wiper trip, CTCH, TOOH, preparing to run surface casing. Ran 15 joints of new 8.620", 23# surface casing, set at 655' and cement with 150 sx MDC (3% CC & 1/2# Flo-seal/sx) and 150 sx Common (4% Gel, 3% CC & 1/2# Flo-seal/sx). Plug was down at 6:15 Am 12/11/2022.

Cement did circulate.

12/11/2022 At 657', Waiting on cement to set prior to drilling ahead.

12/12/2022 At 1653', running straight hole survey

12/13/2022 At 3015', drilling ahead. Displaced mud system at 3795'

12/14/2022 At 4120', drilling ahead, Bit trip at 4237'.

12/15/2022 At 4583', drilling ahead

12/16/2022 At 5000', drilling ahead, drilled to 5075', preparing for DST#1

12/17/2022 At 5075'. Tripping in the hole with bit following DST#1

DST#1 5045 to 5075

30'-60"-60"-120"

1st Open: Fair Blow

2nd Open: Fair Blow

Recovered:

243' Gas in pipe

191' Mud Cut Water (20% Mud & 80% Water)

IFP: 31 - 66# FFP: 71 - 132#

ISIP: 1180# FSIP: 1179#

BHT 112° F

12/18/2022 At 5266', DST#2 5250' to 5266' (Mississippian) in progress.

DST#2 5250' to 5266'

45"-60"-60"-120"

1st Open: Weak Blow inc to Fair

2nd Open: Strong Blow

Recovered:

280' Gas in Pipe

30' Slightly Oil Cut Mud (4% Oil & 96% Mud)

IFP; 28 - 33# FFP: 27 -30#

ISIP: 197# FSIP: 432#

BHT 118° F

Drilled ahead to 5291', Preparing for DST#3 5266' to 5291' (Mississippian)

12/19/2022 At 5291' DST #3 5266' to 5291' (Mississippian) in progress\, TOOH

DST #3 5266' to 5291'

45"-60"-60"-120"

1st Open: Strong Blow

2nd Open: Strong Blow

Recovered:

2527' Gas in Pipe

77' Slightly Oil Cut Mud (10% Oil)

62' Mud Cut Water

IFP; 34 - 53# FFP: 52 -85#

ISIP: 903# FSIP: 961#

BHT 115° F

Based on the negative results of DST 's #1 thru DST#3 orders were given at 10:30 AM 12/19/2022 to plug and abandon the Swonger #6-4 at its current depth of 5291. TIH with bit. Rigged up to LDDP & DC. TOOH LDDP & DC. Nipped down BOP. Rigged up cementers. TIH with plugging stands, loaded wellbore with heavy mud. Set cement plugs through drill pipe as follows: 50 sx at 1590', 50 sx at 690', and 20 sx at 60' to surface. Plugged the rathole with 30 sx and plugged the mousehole with 20 sx. Used a total of 170 sx 60/40 POZ (4% gel). Plug was down at 8:30 PM 12/19/2022. The pits were cleared and the rig was released at 10:30 PM 12/19/2022.

DST #1

Serial #: 6752

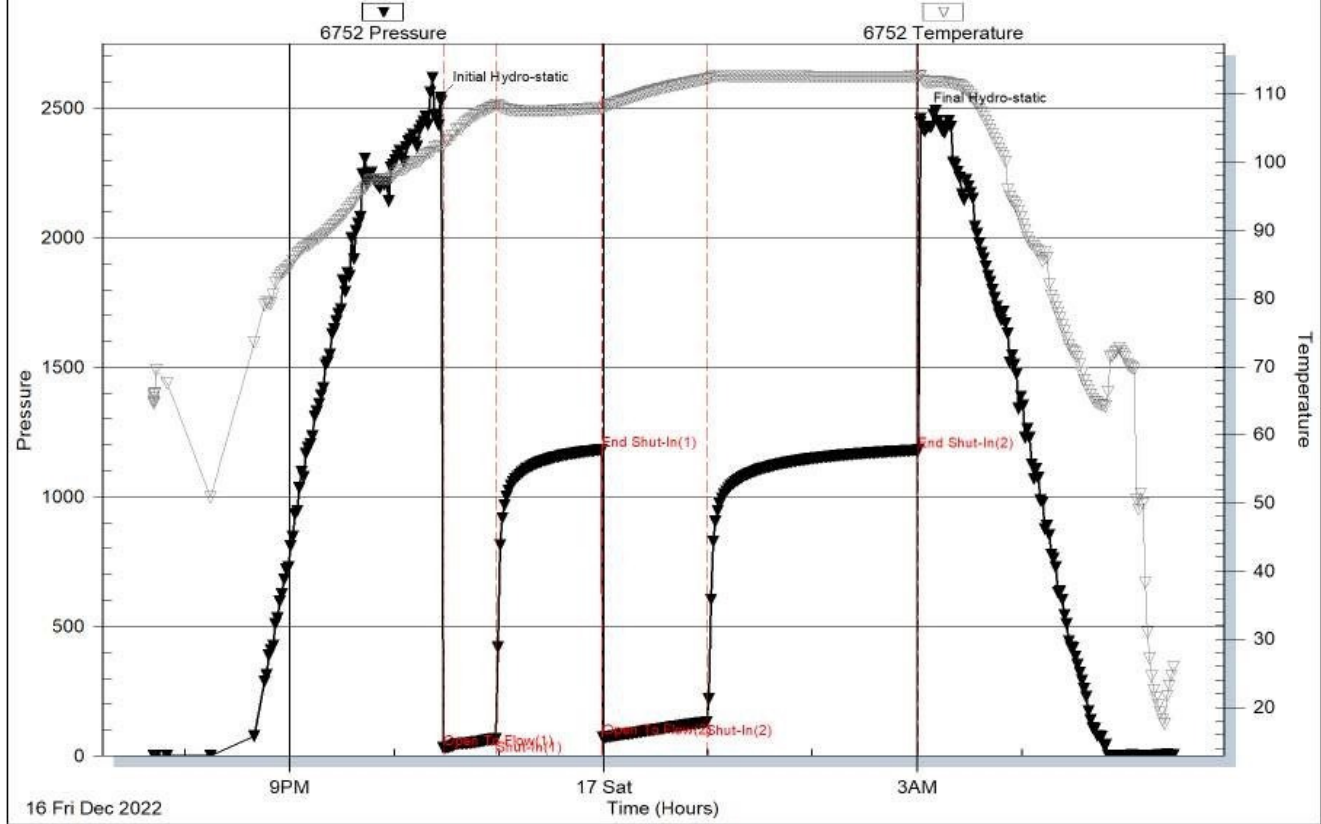
Inside

Vincent Oil Corporation

Swonger #6-4

DST Test Number: 1

Pressure vs. Time



Trilobite Testing, Inc

Ref. No: 69278

Printed: 2022.12.20 @ 12:07:13

DST #2

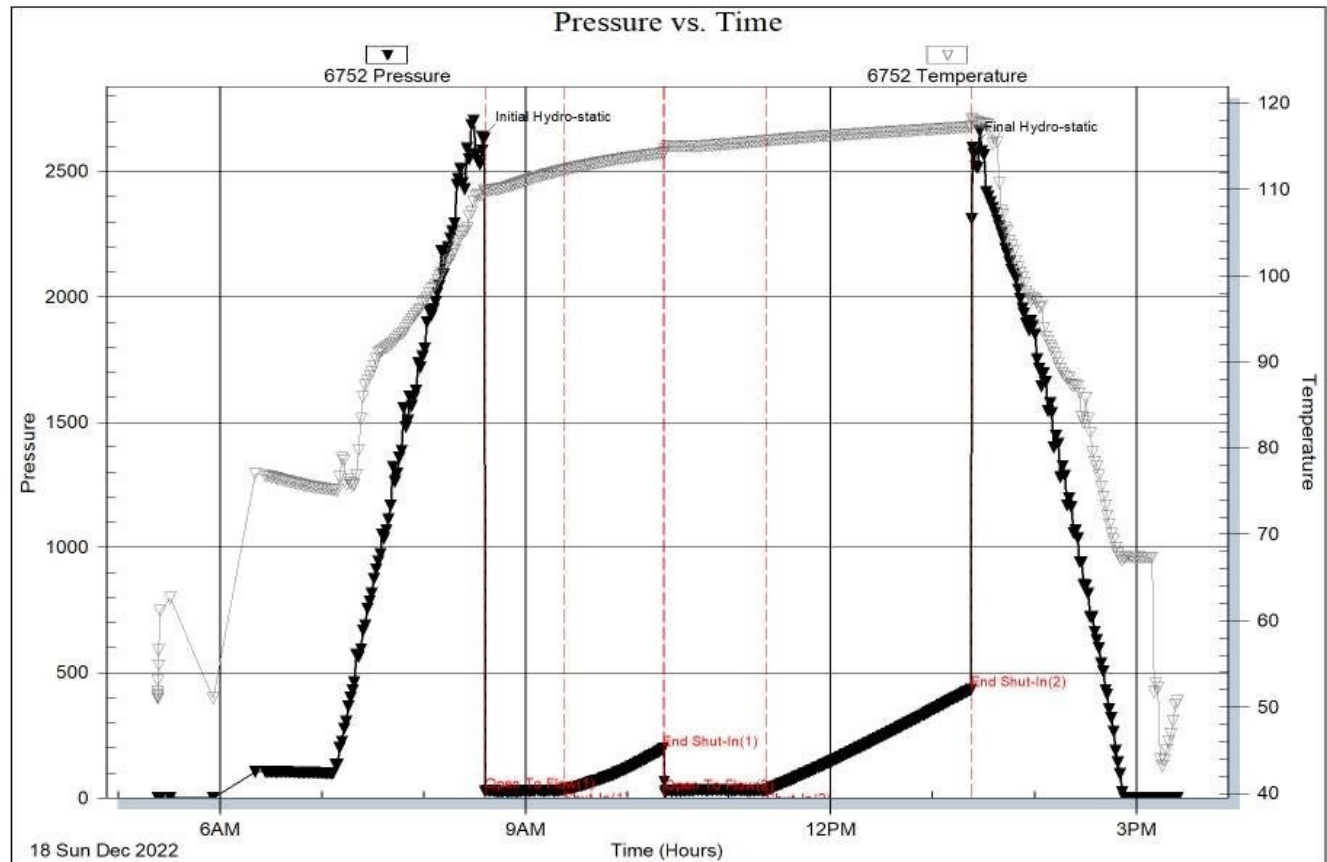
Serial #: 6752

Inside

Vincent Oil Corporation

Sw onger #6-4

DST Test Number: 2



DST #3

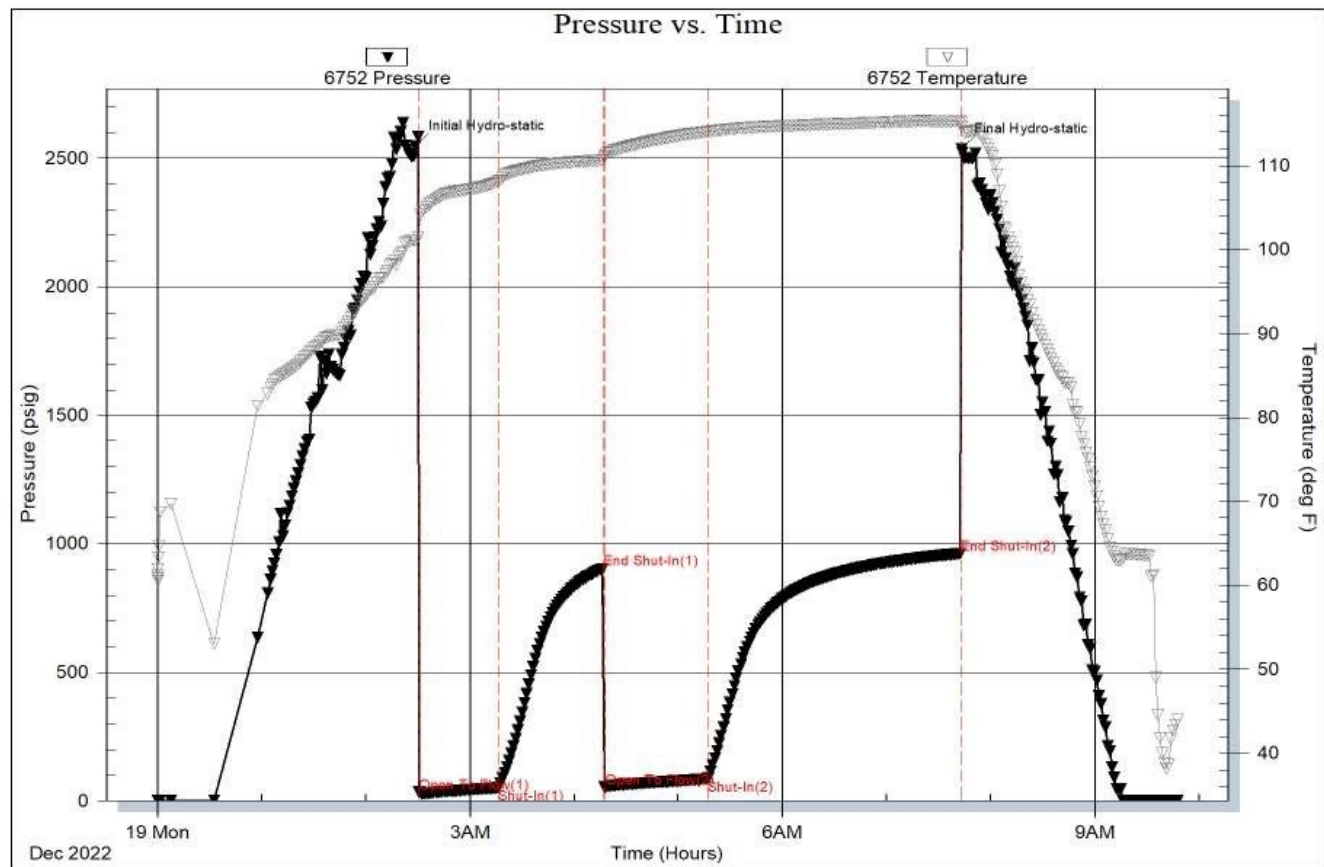
Serial #: 6752

Inside

Vincent Oil Corporation

Sw onger #6-4

DST Test Number: 3



Trilobite Testing, Inc

Ref. No: 69280

Printed: 2022.12.20 @ 12:06:10

ROCK TYPES

	Cht		Dolsec		Shgy		Chtcong
	Coal		Lmst fw<7		Shblk		
	Congl		Lmst fw>7		Shcol		

ACCESSORIES**MINERAL**

— Argillaceous
 ⊥ Calcareous
 ■ Carbonaceous Flakes
 ▲ Chert, dark
 P Pyrite
 • Sandy
 .. Silty
 // Euhed rhombs of dol or
 △ Chert White

FOSSIL

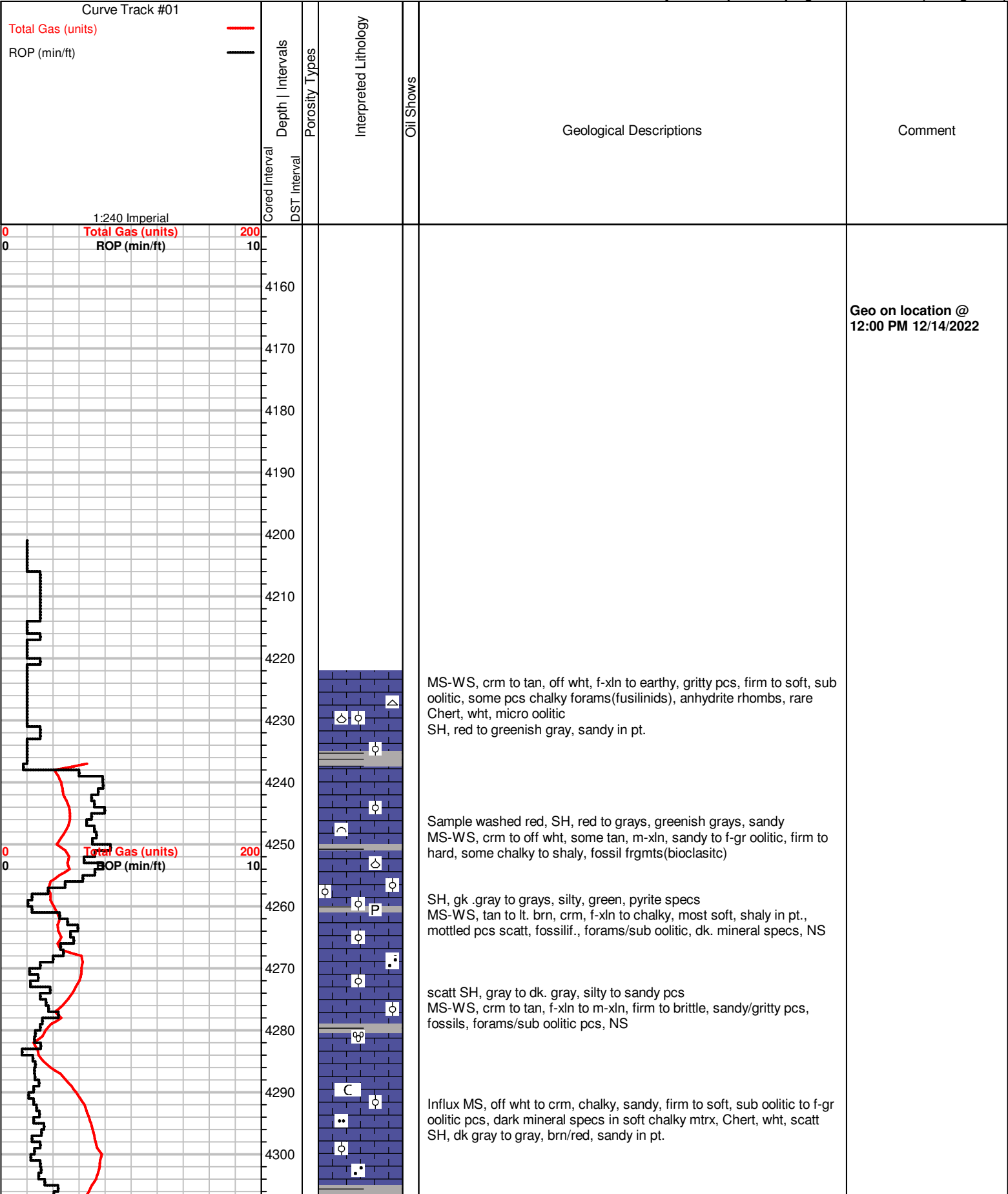
∧ Bioclastic or Fragmental
 ◇ Brachiopod
 ∇ Bryozoa
 ♀ Coral
 ○ Crinoids
 ♀ Foraminifera
 F Fossils < 20%
 φ Oolite

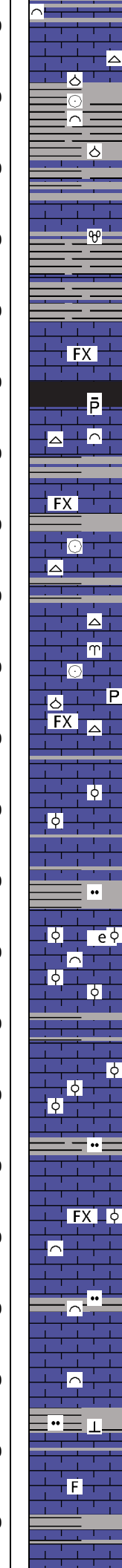
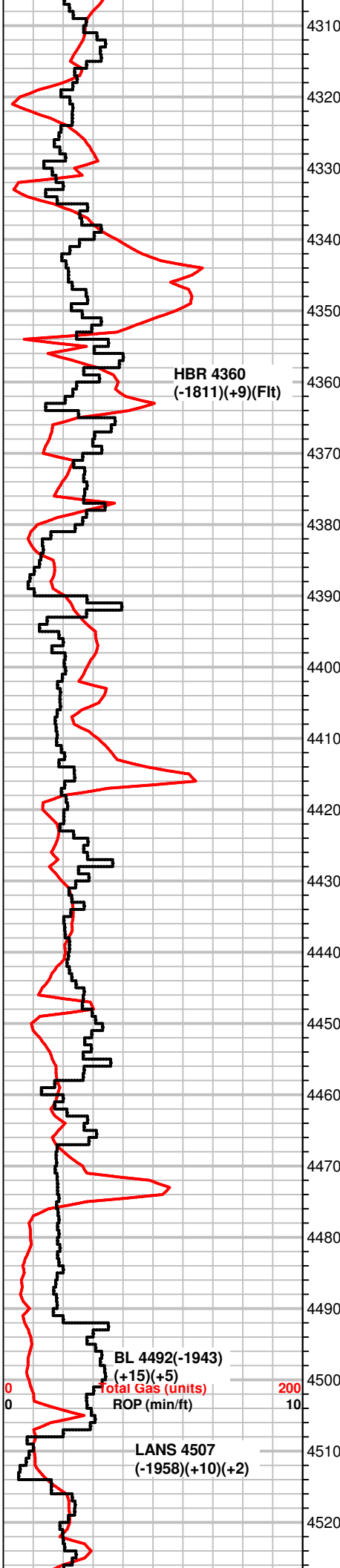
TEXTURE

C Chalky
 e Earthy
 FX Finexln
 MX Microxln

OTHER SYMBOLS**POROSITY TYPE****OIL SHOWS****INTERVALS**

- ✕ Intercrystalline
- ⊕ Interoolitic
- ∇ Vuggy
- P Pinpoint
- ↗ Moldic
- Organic
- F Fracture
- e Earthy
- ▣ Fenestral
- Even Stn
- Spotted Stn 50 - 75 %
- Spotted Stn 25 - 50 %
- Spotted Stn 1 - 25 %
- Questionable Stn
- D Dead Oil Stn
- Fluorescence
- Core
- DST





SH, grays, brn to red scatt, MS, crm to lt. tan, f-xln, gritty to sub oolitic, fossils., NS

MS-WS, tan to crm, A.A., f-xln to earthy, chalky, firm to brittle, sandy to fossilif., brachs, bivalves, forams, Chert, wht, some frgmts in mtrx, SH, dk grays to gray pcs scatt, <5%

MS-WS, crm to tan, dolomitic in pt, m-xln to f-xln, gritty, sandy txt, fossilif, crinoids, forams, Cherty in pt., mottled pcs, mineral specs,

SH, blk to gray pcs rare

SH, blk, blocky hard pcs to soft and platy, pyrite flakes to sli. carb.

MS-WS, crm to tan, f-xln to chalky pcs, firm to dense pcs, msot soft, fossil scatt, sandy pcs, Chert, gray to wht

SH, blk to grays, carb/silty

MS-WS, crm to tan, m-xln, sandy/fossilif frgmts, crinoid sections, firm to hard, rare dense pcs, mottled in part, dull fluor, NS

Chert, wht, lt. gray

scatt SH, grays to blk

MS, crm to brn, gray, f-xln to m-xln A.A., firm to soft, fossils, crinoids/brachs, pyrite specs, rare massive/dense pcs, barren, Chert, wht, NS

WS-MS, crm to lt. tan, f-xln, some pcs earhty, m-gr oolitic in tite calc mtrx, sandy pcs scatt, most dense, dull fluor, NS

rare SH, grays, silty to chalky in pt.

MS-WS, gray, tan to brn, some crm, f-xln to earthy, shalky in pt., mottled, mineral specs, fossilif., m-gr ringed ooids, brittle, dense to firm, dull fluor, NS

some SH, gray, red, brn, silty

Inc in MS, crm to tan, f-xln, chalky, firm, fossilif, A.A., scatt m-gr ringed ooids, crinoids, dull fluor, NS

SH, gk. gray to grays, brn, silty, v-fn pyrite flakes, sandy pcs

WS-MS, crm to gray, some grading to brn, mottled, earthy to shaly pcs, some pcs chalky, firm to friable, m-xln fossilif pcs, tite calc mtrx, NS

SH, grays to green, silty, organic/fossil frgmts

SH, grays, dk. gray, blocky pcs, silty in pt., some pcs limey, hard

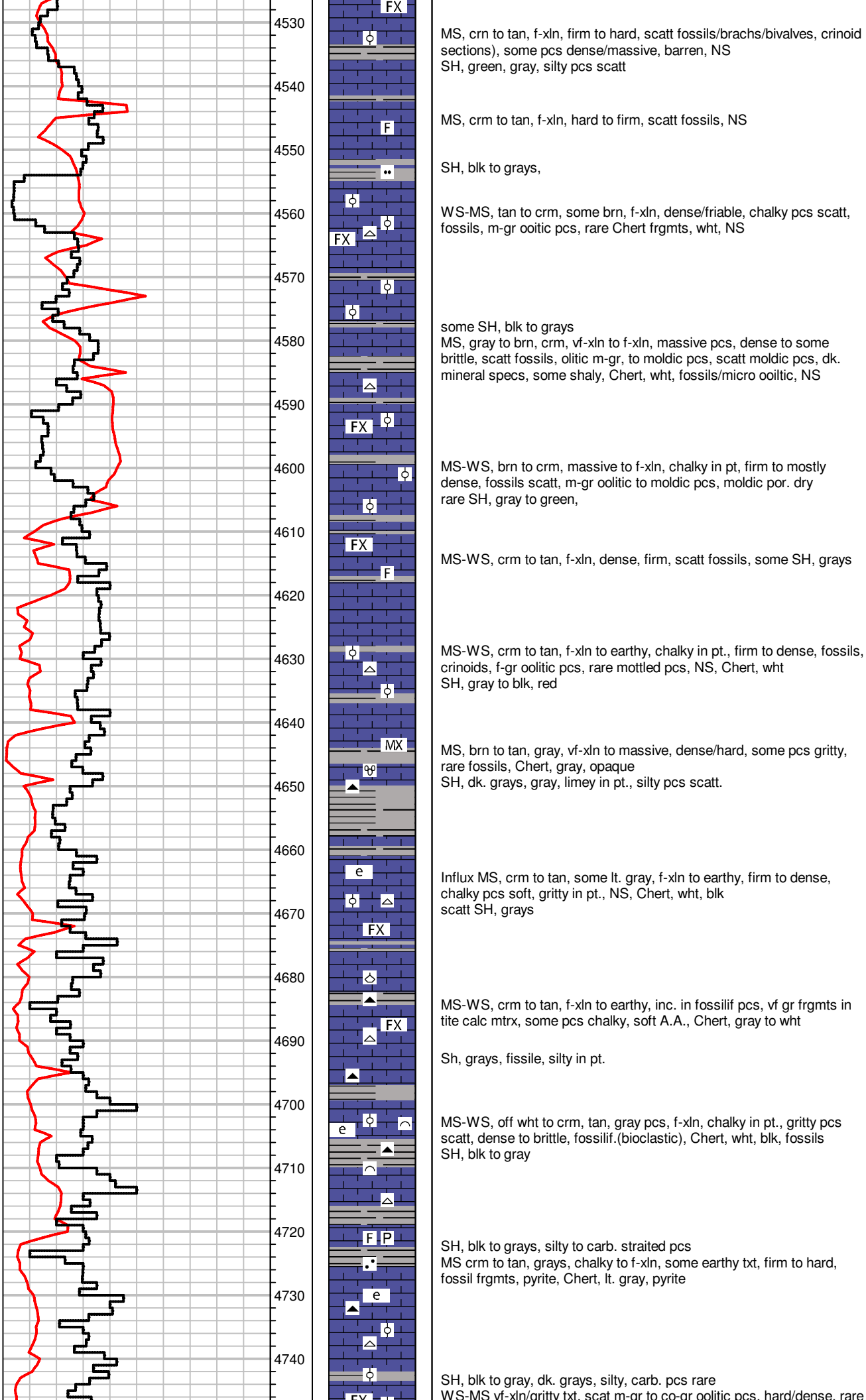
MS, crm to brn, f-xln to massive, earthy, dense, vf-gr gritty txt in pt, mottled pcs rare, fossils scatt, NS

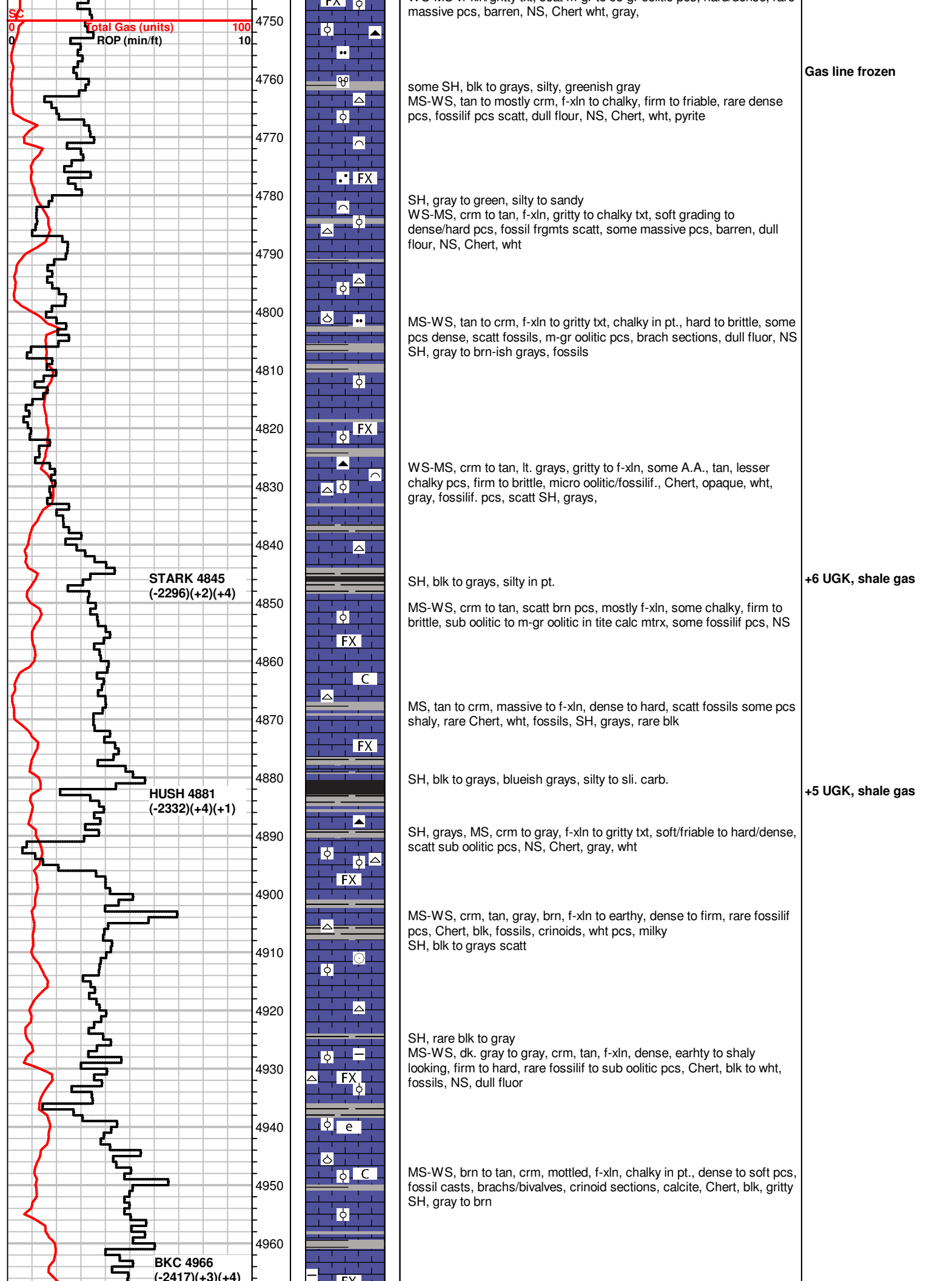
Influx MS-WS, crm to brn, f-gr fossilif, firm to dense, barren, shaly in pt., NS

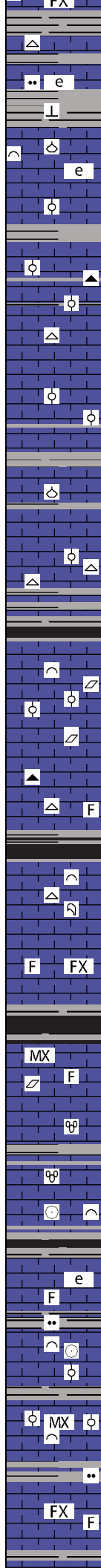
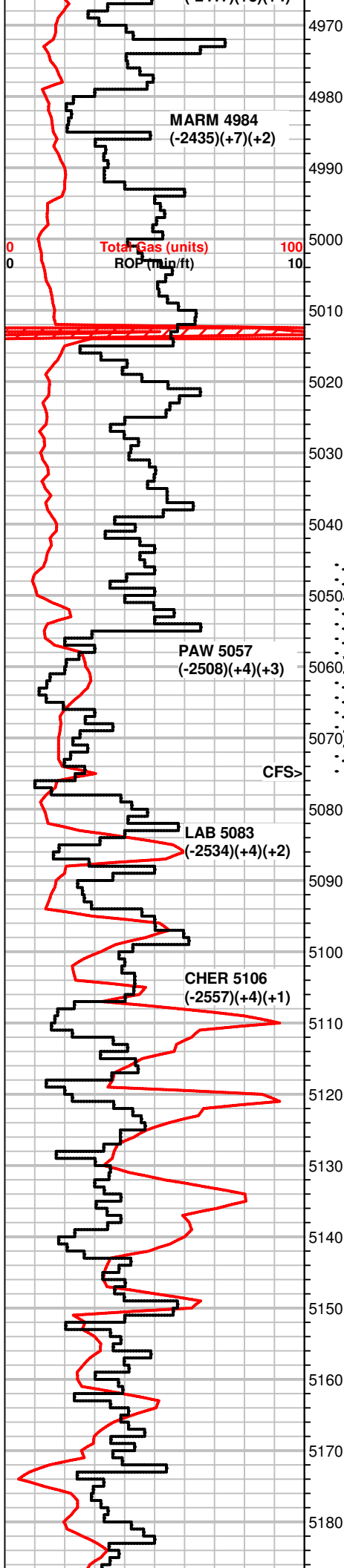
SH, brn to grays

Shale gas

+22 UGK, shale gas







SH, blk to grays, limey in pt., hard
MS-WS, gray to brn, crm pcs scatt, f-xln, shaly to earthy, gritty pcs, dense, scatt fossils, sandy in pt., Chert, wht, tan, blk, fossils, NS

SH, blk to grays, limey, hard
WS-MS, brn to crm, gray, m-xln to earthy, hard/dense, fossil frgmts in tite calc mtrx(crinoids, brach, suboolitic/bioclastic pcs), Chert, blk

SH, brn to grays, limey
MS-scatt WS, crm to brn, gray, f-xln to massive txt, hard/dense, fossilif, micro oolitic pcs, shaly in pt., Chert, blk, wht, fossilif.

Inc in SH, blk, grays, silty, MS-WS, brn to crm, mostly massive to earthy pcs, dense to brittle, scatt fossils, f-gr oolitic, glauc specs, NS

MS-WS, crm, some tan/brn, f-xln to chalky, firm to soft, m-gr oolitic pcs, scatt dense/massive pcs, Cherty frgmts, wht, scatt SH, gray to green

SH, grays, MS-WS, tan to crm, m-xln to massive, dense to friable, fossilif. in dense calc mtrx, oolitic/gastropod/brachs/forams, some pcs chalky, dull fluor, NS

MS, crm to lt. tan, f-xln to dense, friable to hard, chalky pcs, fossilif/sub oolitic, NS

MS-WS, crm to tan, A.A., mostly chalky, scatt fossils, Chert, wht, opaque, fossils, lesser SH, grays

SH, blk to gray, sli. carb.
WS-MS, crm to tan, vf-xln to massive, m-gr oolitic to bioclastic/frgmts, dense to hard, some friable, sply bright fluor(<1% of tray), slow milky to strmg cut on break, no odor

MW-WS, crm, tan, brn, massive to f-xln, dense to hard, sub oolitic to scatt fossils, becoming barren, rare pcs w/ v. sply lt tan stn, slow milky cut, calcite

MS-WS, crm to tan, massive to f-xln, dense/friable, fossilif in pt., Chert, brn, wht, pyrite, sponges

SH, gray to blk, green, silty pcs
MS, rare WS, brn to crm, f-xln to mostly massive, dense to hard, scatt fossils, rare mottled pcs, dull fluor, NS, Chert, wht

MS, crm to tan, earthy to f-xln, firm to hard, some pcs dense, fossil rare, calcite on edge, scatt chalky pcs, soft, NSscatt SH, gray to green, blk, fissile

Influx SH, blk, gray, carb., gassy

MS-WS, crm to tan, brn, massive to f-xln, chalky, scatt fossils, tite calc mtrx, NS, dull fluor

SH, blk to gray, brn, silty in pt.,
WS-MS, tan to crm, f-xln to m-xln, chalky in pt., firm to friable, m-gr oolitic pcs scatt, NS, no odor, Chert, clear/opaque

WS-MS, crm to tan, brn, f-xln to chalky, mottled, sandy in pt., fossilif/sub oolitic pcs, scatt, dull fluor, NS
SH, blk to grays, brn, sandy to limey

lesser SH, blk to gray, scatt green/brn pcs
MS-WS, crm to tan, gritty to f-xln, earthy in pt., dense to firm, sub oolitic to fossilif., rare sply bright fluor on edge, 3 pcs w/ slow milky cut, rare lt. stn dry, some mottled, massive pcs scatt barren,

some SH, blk to grays, silty
WS-MS, crm to tan, scatt gray pcs, f-xln to massive txt, dense, some chalky w/ m-gr dark ooids, oolitic/fossilif in firm/dense calc mtrx, pyrite, dull fluor, NS

SH, blk to gray, some pcs striated
Influx MS, crm to tan, brn, mostly f-xln, some massive, rare chalky pcs, firm to dense, fossils to sub oolitic, rare pyrite, NS

scatt SH, grays, silty, pyrite, limey, hard to fissile
MS, crm to lt. gray, f-xln, chalky, friable to soft, rare dense massive

Trap test, no lines are frozen(air temp below 32°F), good to go into the Pawnee

+12 UGK, shale gas

+17 UGK, recycling lazy but equal

DST #1 5045-5075
30-60-60-120
FB blt to 7.66"
NBB
FB blt to 8.68"
NBB
243' GIP
Rec: 191' MCW
(20m,80w)
IH 2542#
IF 31-67#
ISIP 1180#
FF 72-130#
FSIP 1179#
FH 2460#
Temp 112°F
Rw .25 @ 33°F
CI 62,000ppm

SHALE GAS KICS
RECYCLING IN MUD
SYSTEM

