

KANSAS CORPORATION COMMISSION
OIL & GAS CONSERVATION DIVISION

TEMPORARY ABANDONMENT WELL APPLICATION

All blanks must be complete

OPERATOR: License# _____
Name: _____
Address 1: _____
Address 2: _____
City: _____ State: _____ Zip: _____ + _____
Contact Person: _____
Phone:(_____) _____
Contact Person Email: _____
Field Contact Person: _____
Field Contact Person Phone: (_____) _____

API No. 15- _____
Spot Description: _____
____ - ____ - ____ - ____ Sec. _____ Twp. _____ S. R. _____ E W
_____ feet from N / S Line of Section
_____ feet from E / W Line of Section
GPS Location: Lat: _____, Long: _____
(e.g. xx.xxxxx) (e.g. -xxx.xxxxx)
Datum: NAD27 NAD83 WGS84
County: _____ Elevation: _____ GL KB
Lease Name: _____ Well #: _____
Well Type: (check one) Oil Gas OG WSW Other: _____
 SWD Permit #: _____ ENHR Permit #: _____
 Gas Storage Permit #: _____
Spud Date: _____ Date Shut-In: _____

	Conductor	Surface	Production	Intermediate	Liner	Tubing
Size						
Setting Depth						
Amount of Cement						
Top of Cement						
Bottom of Cement						

Casing Fluid Level from Surface: _____ How Determined? _____ Date: _____
Casing Squeeze(s): _____ to _____ w / _____ sacks of cement, _____ to _____ w / _____ sacks of cement. Date: _____
(top) (bottom) (top) (bottom)
Do you have a valid Oil & Gas Lease? Yes No
Depth and Type: Junk in Hole at _____ (depth) Tools in Hole at _____ (depth) Casing Leaks: Yes No Depth of casing leak(s): _____
Type Completion: ALT. I ALT. II Depth of: DV Tool: _____ w / _____ sacks of cement Port Collar: _____ w / _____ sack of cement
(depth) (depth)
Packer Type: _____ Size: _____ Inch Set at: _____ Feet
Total Depth: _____ Plug Back Depth: _____ Plug Back Method: _____

Geological Data:

Formation Name	Formation Top	Formation Base	Completion Information
1. _____	At: _____	to _____ Feet	Perforation Interval _____ to _____ Feet or Open Hole Interval _____ to _____ Feet
2. _____	At: _____	to _____ Feet	Perforation Interval _____ to _____ Feet or Open Hole Interval _____ to _____ Feet

UNDER PENALTY OF PERJURY I HEREBY ATTEST THAT THE INFORMATION CONTAINED HEREIN IS TRUE AND CORRECT TO THE BEST OF MY KNOWLEDGE

Submitted Electronically

Do NOT Write in This Space - KCC USE ONLY	Date Tested: _____	Results: _____	Date Plugged: _____	Date Repaired: _____	Date Put Back in Service: _____
	Review Completed by: _____ Comments: _____				
TA Approved: <input type="checkbox"/> Yes <input type="checkbox"/> Denied Date: _____					

Mail to the Appropriate KCC Conservation Office:

	KCC District Office #1 - 210 E. Frontview, Suite A, Dodge City, KS 67801	Phone 620.682.7933
	KCC District Office #2 - 3450 N. Rock Road, Building 600, Suite 601, Wichita, KS 67226	Phone 316.337.7400
	KCC District Office #3 - 137 E. 21st St., Chanute, KS 66720	Phone 620.902.6450
	KCC District Office #4 - 2301 E. 13th Street, Hays, KS 67601-2651	Phone 785.261.6250

General

Well ID Hunt 3408 3-15H FL 1
 Well Hunt 3408 3-15H FL 1
 Company SD
 Operator Andrew Smith
 Lease Name Hunt 3408 3-15H FL 1
 Elevation 0.00 ft
 Production Method Electrical Submersible Pump

Comment

Tubulars

Tubing OD 2.875 in
 Average Joint Length 32.688 ft
 Sliding Sleeve - * - ft
 Casing OD 7.000 in
 Liner OD - * - in
 Top of Liner - * - ft
 PBTD - * - ft
 Kelly Bushing 18.50 ft

Pump Assembly

Installation Date - * -
 Pump Intake Depth 5034.00 ft
 PIP Gage - * - ft

Gas Separator

Gas Separator Not Used
 Tubing Discharge Temp - * - deg F

Pump Configuration

	Top Pump	Pump 2	Pump 3	Pump 4	Pump 5
Pump Manufacturer	- * -	- * -	- * -	- * -	- * -
Pump Description/Series	- * -	- * -	- * -	- * -	- * -
Serial Number	- * -	- * -	- * -	- * -	- * -
Stage Count	0	0	0	0	0
Pump Housing	- * -	- * -	- * -	- * -	- * -

Total Length of Pump Assembly - * - ft
 Shroud is Not Used

Electric Equipment

Control Panel - * -
 Variable Frequency is Not Used
 Overload Set Point - * -
 Underload Set Point - * -
 Overvoltage Set Point - * -
 Undervoltage Set Point - * -
 Frequency - * -
 Pump Up Time - * -

Cable Data

Round Cable Type - * -
 Round Cable Length - * - ft
 Flat Cable Type - * -
 Flat Cable Length - * - ft

Electrical Cost

Cost Per kW-Hour - * -
 Cost Per kW - * -

Motor Assembly Description

	Top Motor	Motor 2	Motor 3	Motor 4
Manufacturer	- * -	- * -	- * -	- * -
Series	- * -	- * -	- * -	- * -
Type	- * -	- * -	- * -	- * -
HP	- * -	- * -	- * -	- * -
Volts/Amps	- * -	- * -	- * -	- * -
Total Length of Motor Assembly	- * - ft		Installation Date	- * -

Electrical Parameters

AMPS		VOLTS	
A Input	- * -	BA Input	- * -
B Input	- * -	CB Input	- * -
C Input	- * -	AC Input	- * -
		A-gnd	- * -
		B-gnd	- * -
		C-gnd	- * -
Kilowatt	- * -	Power Factor	- * -
		Date and Time of Measurement	- * -

Conditions

Pressure

Static BHP 157.7 psi (g)
 Static BHP Method Acoustic
 Static BHP Date 03/07/2025
 Producing BHP 124.3 psi (g)
 Producing BHP Method Acoustic
 Producing BHP Date 03/07/2025
 Formation Depth 5034.00 ft

Production

Oil Production - * - BBL/D
 Water Production - * - BBL/D
 Gas Production - * - Mscf/D
 Production Date - * -

Temperatures

Surface Temperature 70 deg F
 Bottomhole Temperature 150 deg F

Surface Producing Pressures

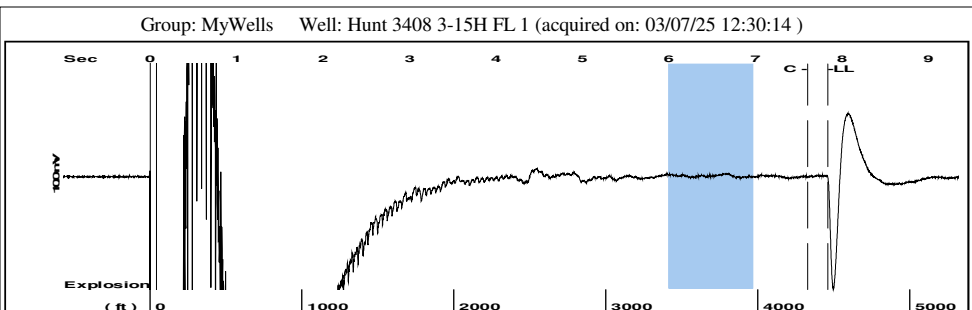
Tubing Pressure - * - psi (g)
 Casing Pressure -0.5 psi (g)

Fluid Properties

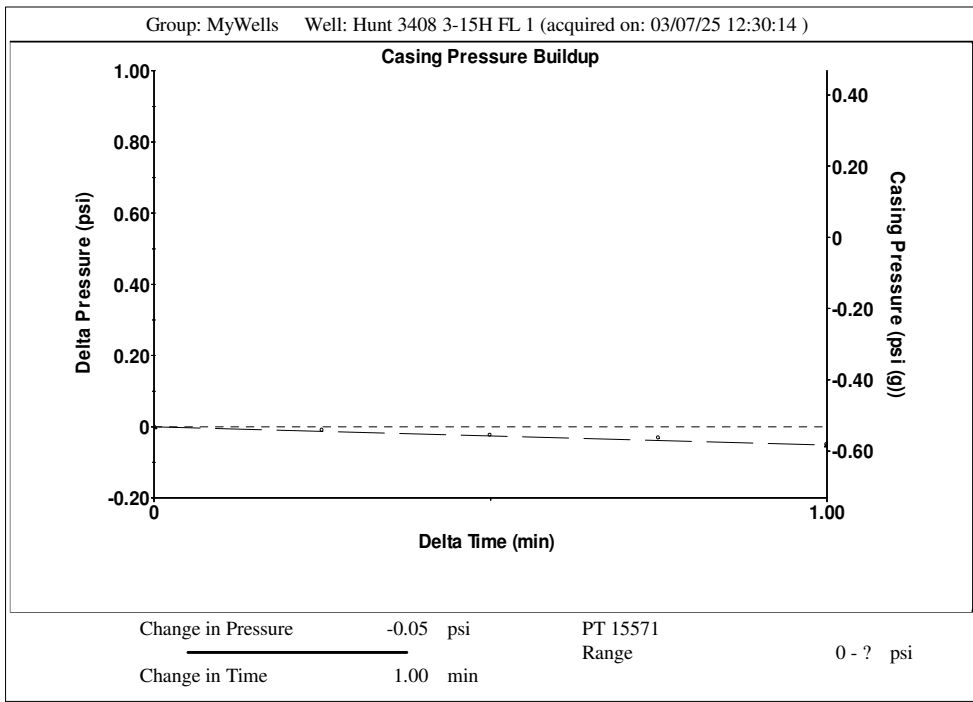
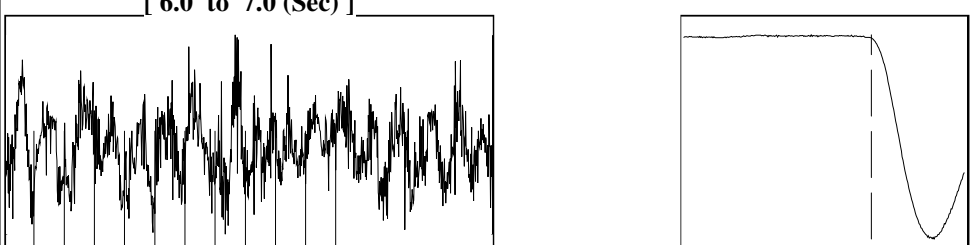
Oil API 40 deg API
 Water Specific Gravity 1.05 Sp.Gr.H2O

Casing Pressure Buildup

Change in Pressure -0.051 psi
 Over Change in Time 1.00 min



Filter Type High Pass Automatic Collar Count Yes Time 7.839 sec
 Manual Acoustic Veloc 1054.45 ft/s Manual JTS/sec 16.129 Joints 136.479 Jts
 Depth 4461.22 ft



Group: MyWells Well: Hunt 3408 3-15H FL 1 (acquired on: 03/07/25 12:30:14)

Production	Potential	Casing Pressure		Static
Current		-0.5 psi (g)		Oil Column Height
Oil - *-	- *- BBL/D	Casing Pressure Buildup		MD 0 ft
Water - *-	- *- BBL/D	-0.051 psi		TVD 0 ft
Gas - *-	- *- Mscf/D	1.00 min	Water Column Height	
IPR Method	Vogel	Gas/Liquid Interface Pressure	MD 554 ft	
PBHP/SBHP	- *-	1.3 psi (g)	TVD 344 ft	
Production Efficiency	0.0	Liquid Level Depth		
		4461.22 ft		
Oil 40 deg.API		Main Depth to Liq Level TVD		
Water 1.05 Sp.Gr.H2O		4294.09 ft		
Gas 0.86 Sp.Gr.AIR		Pump Intake Depth		
		5034.00 ft		
Acoustic Velocity 1138.21 ft/s		Formation Depth		
		5034.00 ft		
		Formation Depth TVD		
		4655.23 ft		
Acoustic Test		Static BHP		
		157.7 psi (g)		

Group: MyWells Well: Hunt 3408 3-15H FL 1 (acquired on: 03/07/25 12:30:14)

Acoustic Velocity	1138.21 ft/s	Joints counted	128
Joints Per Second	17.4102 jts/sec	Joints to liquid level	136.479
Depth to liquid level	4461.22 ft	Filter Width	14.129 18.129
Automatic Collar Count	Yes	Time to 1st Collar	0.256 7.608

Conservation Division
District Office No. 2
3450 N. Rock Road
Building 600, Suite 601
Wichita, KS 67226



Phone: 316-337-7400
<http://kcc.ks.gov/>

Andrew J. French, Chairperson
Dwight D. Keen, Commissioner
Annie Kuether, Commissioner

Laura Kelly, Governor

03/19/2025

Leah Medrana
SandRidge Exploration and Production LLC
1 E SHERIDAN AVE STE 500
OKLAHOMA CITY, OK 73104-2494

Re: Temporary Abandonment
API 15-077-22138-01-00
HUNT 3408 3-15H
NE/4 Sec.15-34S-08W
Harper County, Kansas

Dear Leah Medrana:

"Your temporary abandonment (TA) application for the well listed above has been approved. In accordance with K.A.R. 82-3-111 the TA status of this well will expire 03/19/2026.

- * If you return this well to service or plug it, please notify the District Office.
- * If you sell this well you are required to file a Transfer of Operator form, T-1.
- * If the well will remain temporarily abandoned, you must submit a new TA application, CP-111, before 03/19/2026.

You may contact me at the number above if you have questions.

Very truly yours,

Neil Lake, ECRS"