

KANSAS CORPORATION COMMISSION
OIL & GAS CONSERVATION DIVISION

TEMPORARY ABANDONMENT WELL APPLICATION

OPERATOR: License#
Name:
Address 1:
Address 2:
City: State: Zip:
Contact Person:
Phone:
Contact Person Email:
Field Contact Person:
Field Contact Person Phone:

API No. 15-
Spot Description:
Sec. Twp. S. R.
GPS Location: Lat: Long:
Datum: NAD27 NAD83 WGS84
County: Elevation:
Lease Name: Well #:
Well Type: Oil Gas OG WSW Other:
SWD Permit #: ENHR Permit #:
Gas Storage Permit #:
Spud Date: Date Shut-In:

Table with 7 columns: Conductor, Surface, Production, Intermediate, Liner, Tubing. Rows include Size, Setting Depth, Amount of Cement, Top of Cement, Bottom of Cement.

Casing Fluid Level from Surface: How Determined? Date:
Casing Squeeze(s): to w / sacks of cement, to w / sacks of cement. Date:
Do you have a valid Oil & Gas Lease? Yes No
Depth and Type: Junk in Hole at Tools in Hole at Casing Leaks: Yes No Depth of casing leak(s):
Type Completion: ALT. I ALT. II Depth of: DV Tool: w / sacks of cement Port Collar: w / sack of cement
Packer Type: Size: Inch Set at: Feet
Total Depth: Plug Back Depth: Plug Back Method:

Geological Data:

Table with 4 columns: Formation Name, Formation Top, Formation Base, Completion Information. Rows 1 and 2.

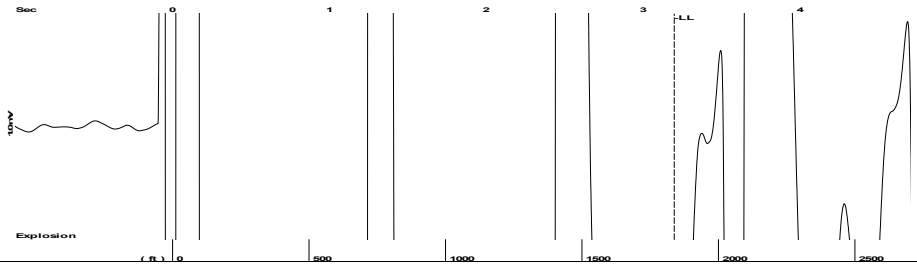
UNDER PENALTY OF PERJURY I HEREBY ATTEST THAT THE INFORMATION CONTAINED HEREIN IS TRUE AND CORRECT TO THE BEST OF MY KNOWLEDGE

Submitted Electronically

Do NOT Write in This Space - KCC USE ONLY
Date Tested: Results: Date Plugged: Date Repaired: Date Put Back in Service:
Review Completed by: Comments:
TA Approved: Yes Denied Date:

Mail to the Appropriate KCC Conservation Office:

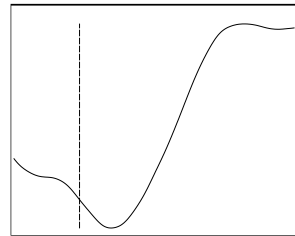
Table with 3 columns: District Office, Address, Phone. Rows for District Office #1, #2, #3, #4.



Time 3.196 sec
 Joints 57.9716 Jts
 Depth 1837.70 ft

Liquid level calculated with
 user supplied Acoustic Velocity

Acoustic Velocity 1150 ft/s



Analysis Method: Acoustic Velocity

NO PRESSURE DATA AVAILABLE

Change in Pressure 0.00 psi PT13682
 Range 0 - ? psi
 Change in Time 0.00 min

| | | | |
|--------------------------------------|--------------|-------------------------------|------------------|
| Production Current | Potential | Casing Pressure | Producing |
| Oil - * - | - * - BBL/D | -14.7 psi (g) | |
| Water - * - | - * - BBL/D | Casing Pressure Buildup | Annular Gas Flow |
| Gas - * - | - * - Mscf/D | - * - psi | - * - Mscf/D |
| | | - * - min | % Liquid |
| IPR Method | Vogel | Gas/Liquid Interface Pressure | 100 % |
| PBHP/SBHP | - * - | - * - psi (g) | |
| Production Efficiency | 0.0 | Liquid Level Depth | |
| Oil 40 deg.API | | 1837.70 ft | |
| Water 1.05 Sp.Gr.H2O | | Pump Intake Depth | |
| Gas 0.70 Sp.Gr.AIR | | - * - ft | |
| Acoustic Velocity 1150 ft/s | | Formation Depth | |
| | | 3420.00 ft | |
| Formation Submergence | | | Pump Intake |
| Total Gaseous Liquid Column HT (TVD) | - * - ft | | - * - psi (g) |
| Equivalent Gas Free Liquid HT (TVD) | - * - ft | | Producing BHP |
| | | | - * - psi (g) |
| Acoustic Test | | | Static BHP |
| | | | - * - psi (g) |

Entered Acoustic Velocity for Liquid Level depth determination

Conservation Division
District Office No. 2
3450 N. Rock Road
Building 600, Suite 601
Wichita, KS 67226



Phone: 316-337-7400
<http://kcc.ks.gov/>

Andrew J. French, Chairperson
Dwight D. Keen, Commissioner
Annie Kuether, Commissioner

Laura Kelly, Governor

03/28/2025

Jose Reyes
American Warrior, Inc.
PO BOX 399
GARDEN CITY, KS 67846-0399

Re: Temporary Abandonment
API 15-053-21302-00-00
GRUB UNIT 2-5
SW/4 Sec.05-16S-10W
Ellsworth County, Kansas

Dear Jose Reyes:

"Your temporary abandonment (TA) application for the well listed above has been approved. In accordance with K.A.R. 82-3-111 the TA status of this well will expire 03/28/2026.

- * If you return this well to service or plug it, please notify the District Office.
- * If you sell this well you are required to file a Transfer of Operator form, T-1.
- * If the well will remain temporarily abandoned, you must submit a new TA application, CP-111, before 03/28/2026.

You may contact me at the number above if you have questions.

Very truly yours,

Keith Karlin, ECRS"