

Form	ACO1 - Well Completion
Operator	Val Energy, Inc.
Well Name	JAMES GANG OUTLAWS 1-20
Doc ID	1705785

Casing

Purpose Of String	Size Hole Drilled	Size Casing Set	Weight	Setting Depth	Type Of Cement	Number of Sacks Used	Type and Percent Additives
Surface	12.25	8.625	24	306	Class A	200	CaCl, Gel
Production	7.875	5.5	14	3256	Thick Set	235	Gel

LOCATION AND LEGALS DATA

WellSight Systems

Scale 1:240 (5"=100') Imperial
Measured Depth Log

Well Name: James Gang Outlaws 1-20

API: 15-035-24776

Location: N2 SW NE SW S20 T32S R6E

License Number: 5822

Spud Date: 1/17/23

Surface Coordinates: 1824' FSL, 1650' FWL

Region: Cowley Co, KS

Drilling Completed: 1/22/23

Bottom Hole

Coordinates:

Ground Elevation (ft): 1307'

K.B. Elevation (ft): 1316'

Logged Interval (ft): 1700' To: 3261'

Total Depth (ft): 3261'

Formation: Mississippi Lime

Type of Drilling Fluid: Chemical

Printed by MudLog from WellSight Systems 1-800-447-1534 www.WellSight.com

OPERATOR

Company: Val Energy, Inc.

Address: 125 N Market St STE 1110
Wichita, KS 67202

GEOLOGIST

Name: Brandon Wolfe

Company: Lone Wolf Well Logging, LLC

Address: 1016 N Biddle St
Moline, KS 67353

CONTRACTOR

Drilling Rig: (Rig 2) C&G Drilling Inc. 701 E. River St. Eureka, KS 67045-2100

Drilling FLuids: Mud Co

Open Hole Logs: Osage Wireline

Cement: ELITE Cementing




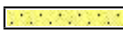


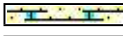


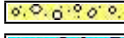

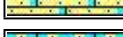






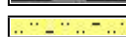





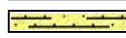



COMMENTS

5 1/2" Production casing was ran to futher evaluate the Mississippi Lime

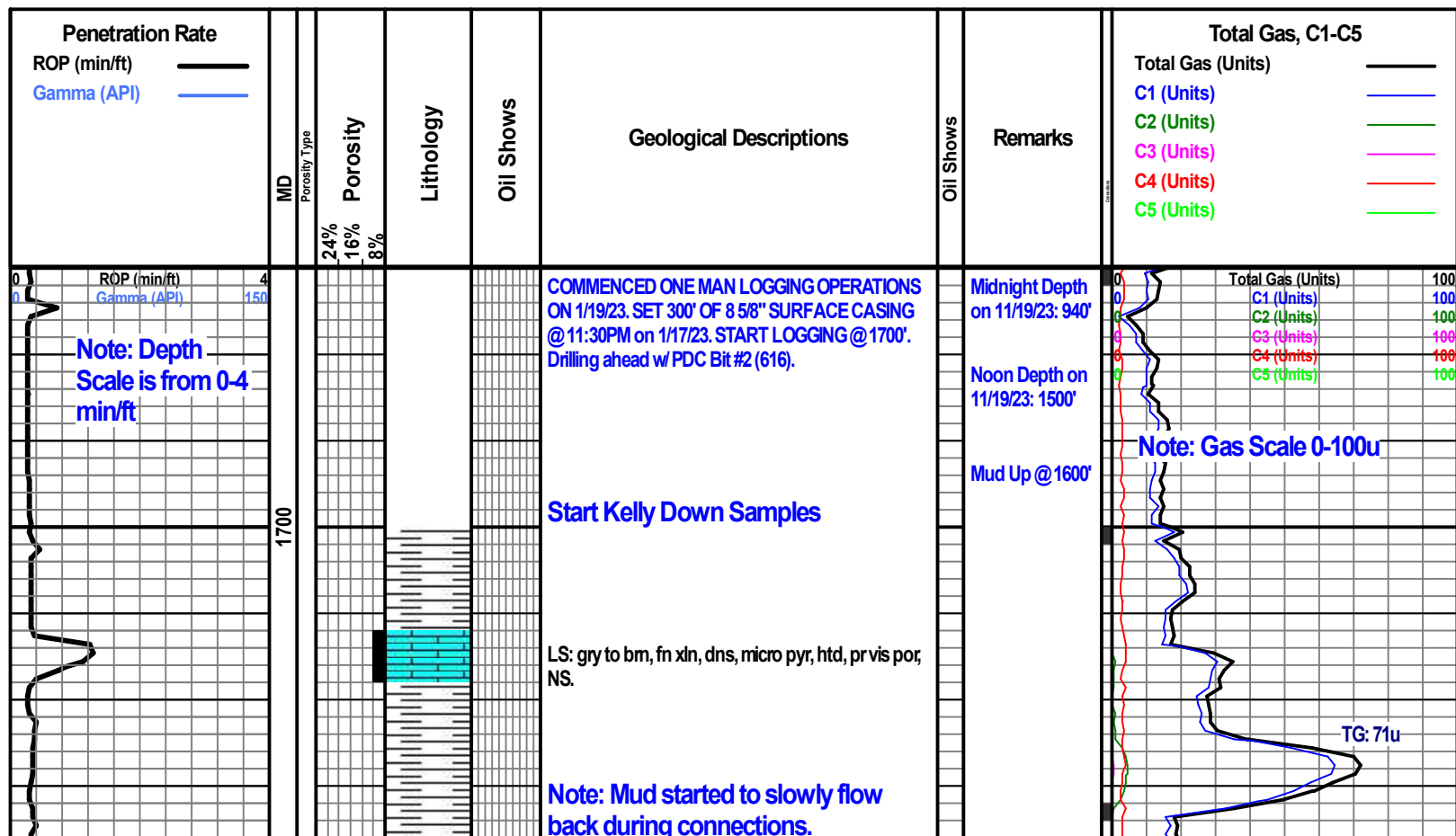
FormationSample TopsLog Tops

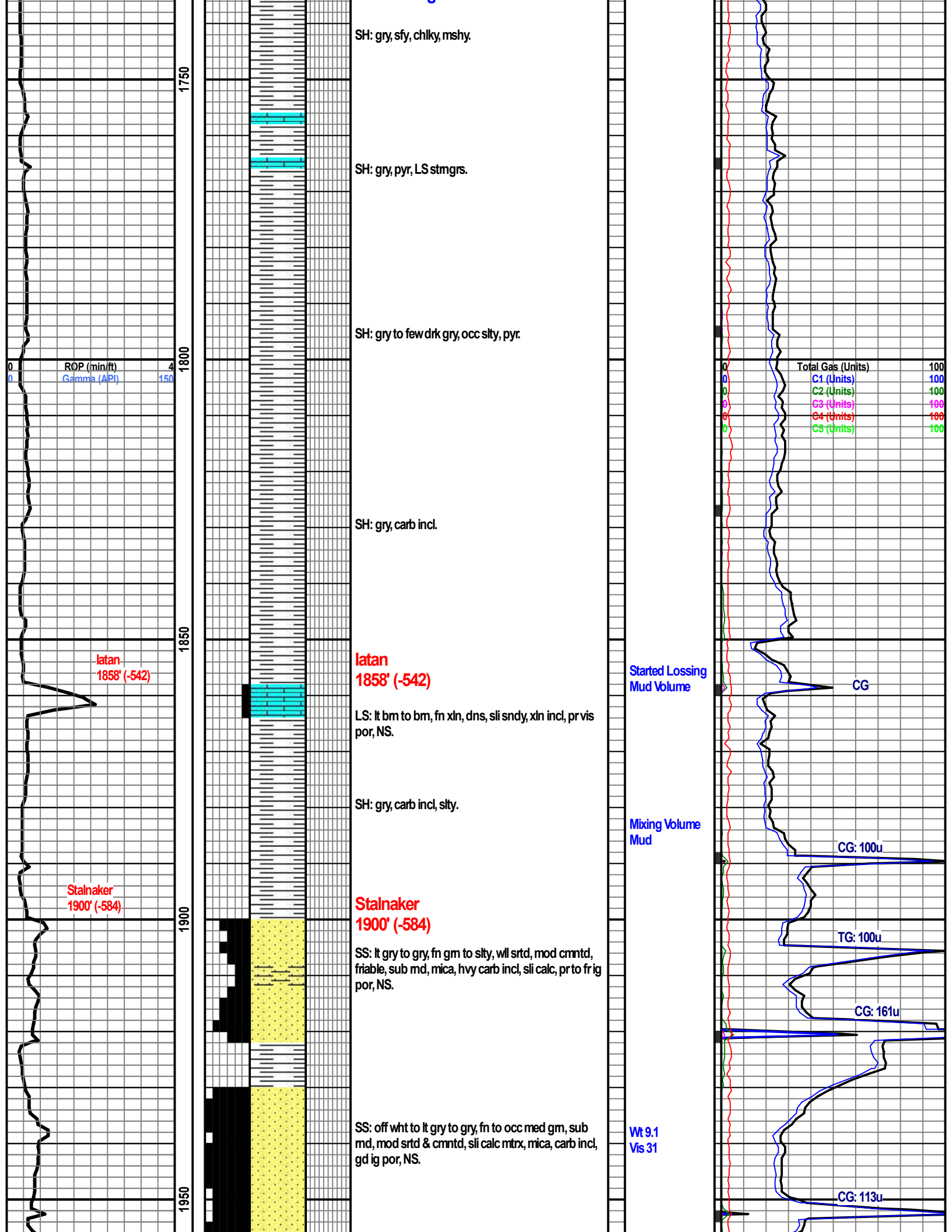
Iatan	1858' (-542)	1857' (-541)
Stalnaker	1900' (-584)	1898' (-582)
Lansing	2045' (-729)	2045' (-729)
Iola	2245' (-929)	2244' (-928)
Layton	2282' (-966)	2282' (-966)
Kansas City	2439' (-1123)	2436' (-1120)
Marmaton	2655' (-1339)	2654' (-1338)
Cherokee	2790' (-1474)	2789' (-1473)
Admore Shale	2876' (-1560)	2874' (-1558)
Cattleman Sand	2892' (-1576)	2894' (-1578)
Mississippi	2046' (-1730)	2046' (-1730)
RTD	3261' (-1945)	3261' (-1945)

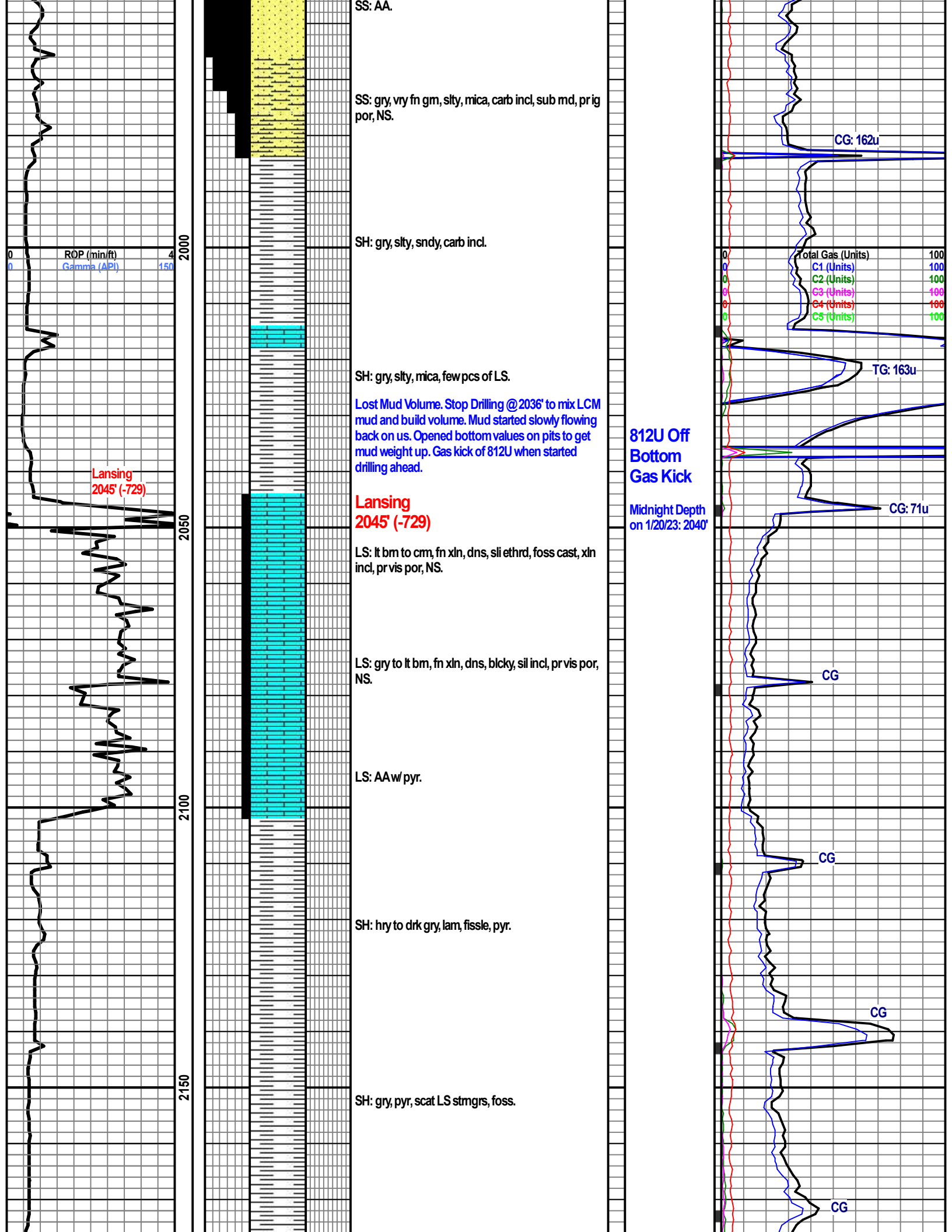
ROCK TYPES

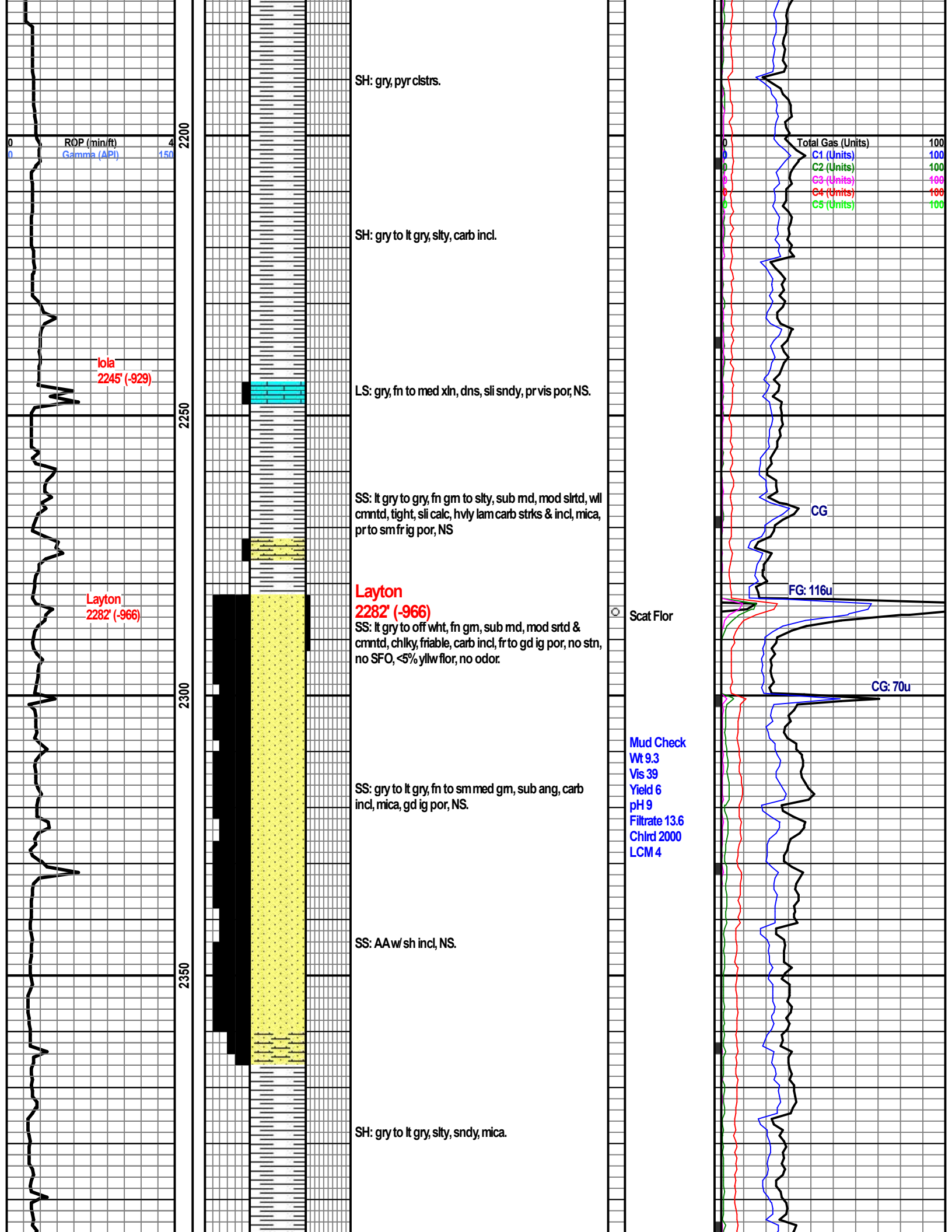
	Anhydrite		Shaly_ss_ii		Cherty_dolo		Qtz_wash
	Arkose		Sandstone		Dolomite		Qtz_wash_ii
	Ark_shale		Shaly_limy_ss		Limy_dolo		Argil_qtz_wash
	Granite		Washy_limy_ss		Conglomerate		Ark_qtz_wash
	Coal		Limy_ss		Carb_wash		Sdy_gw
	Limy_sh		Sdy_ls		Sdy_carb_wash		Shaly_gw
	Shale		Limestone		Shaly_sdy_carb		Gw_a
	Hot_shale		Dolo_ls		Shaly_limy_qtz_w		Gw_b
	Hot_shale_ii		Shaly_ls		Shaly_limy_qtz_w		Gw_c
	Siltstone		Carb_shaly_ls		Limy_qtz_wash		Gw_d
	Siltstone_ii		Cherty_ls		Limy_qtz_wash_ii		
	Shaly_ss		Chert		Limy_qtz_wash_iii		

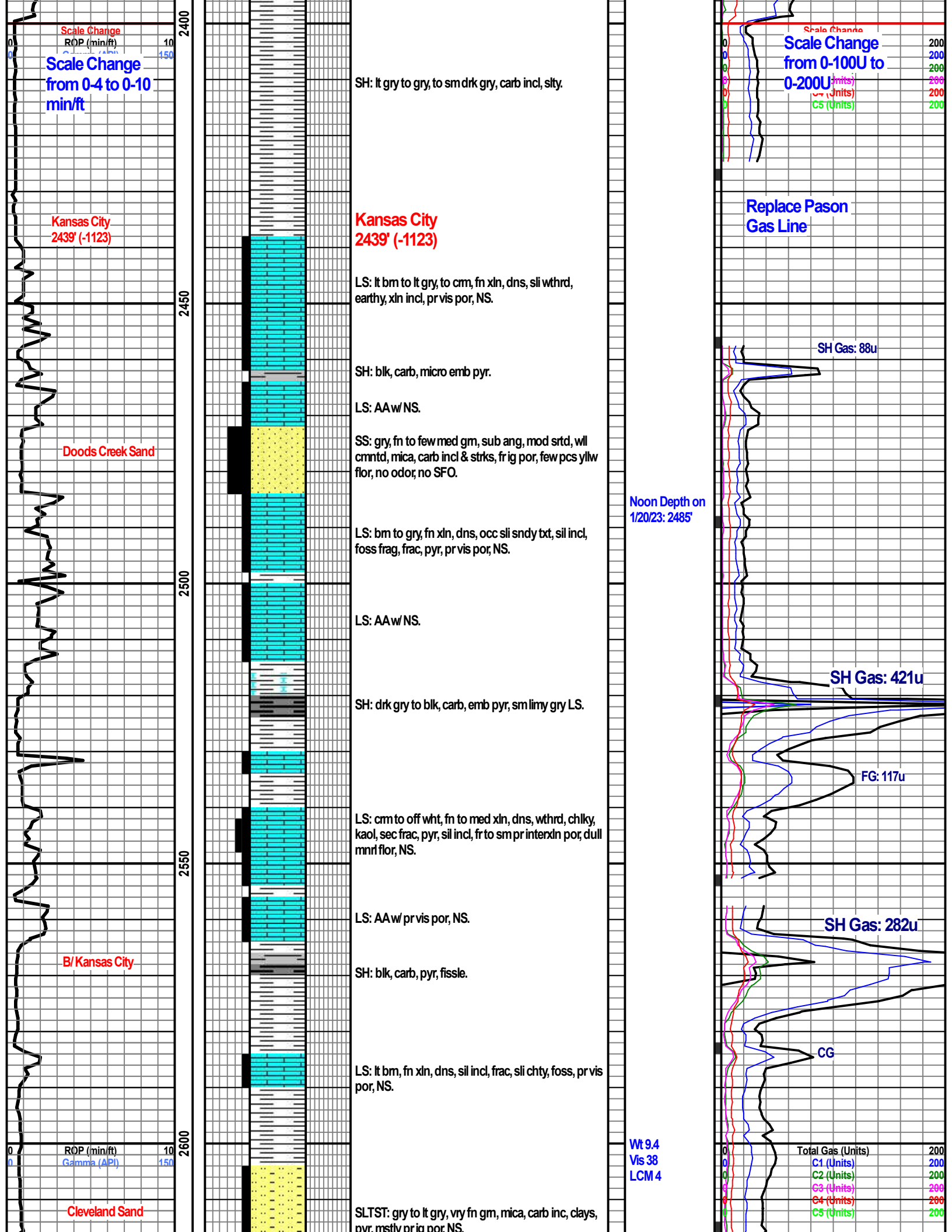
☐ Gas show
☐ Even
☐ Spotted
☐ Ques
☐ Dead

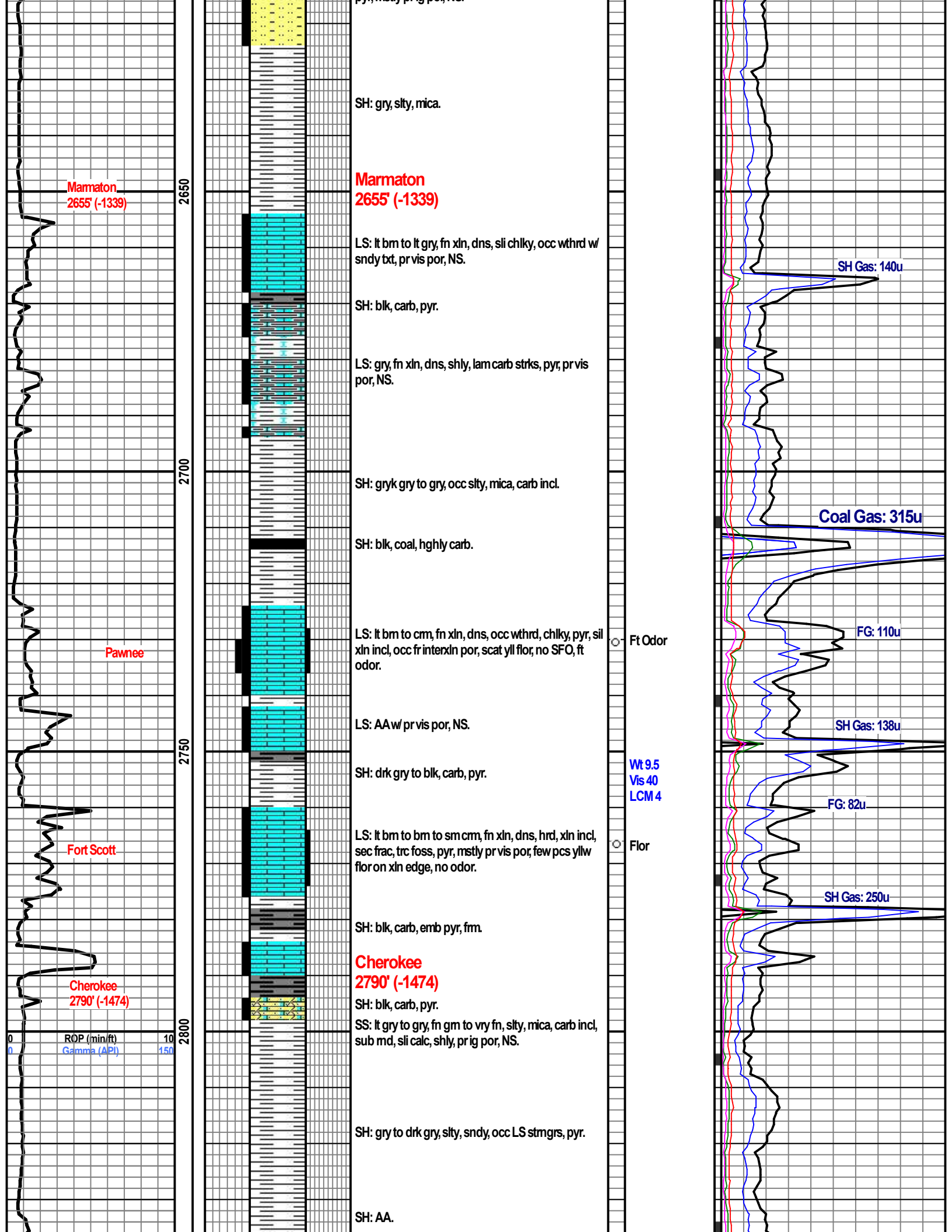


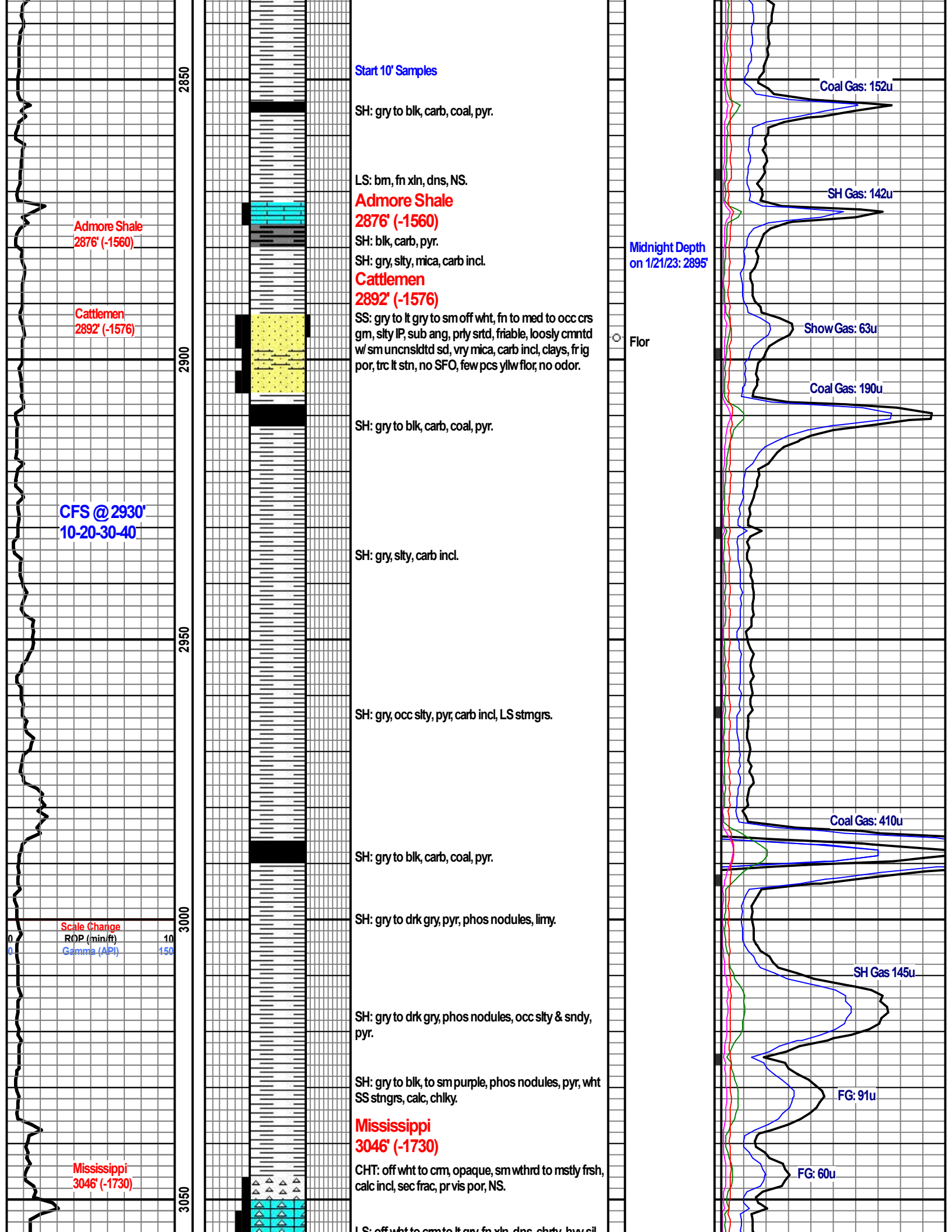


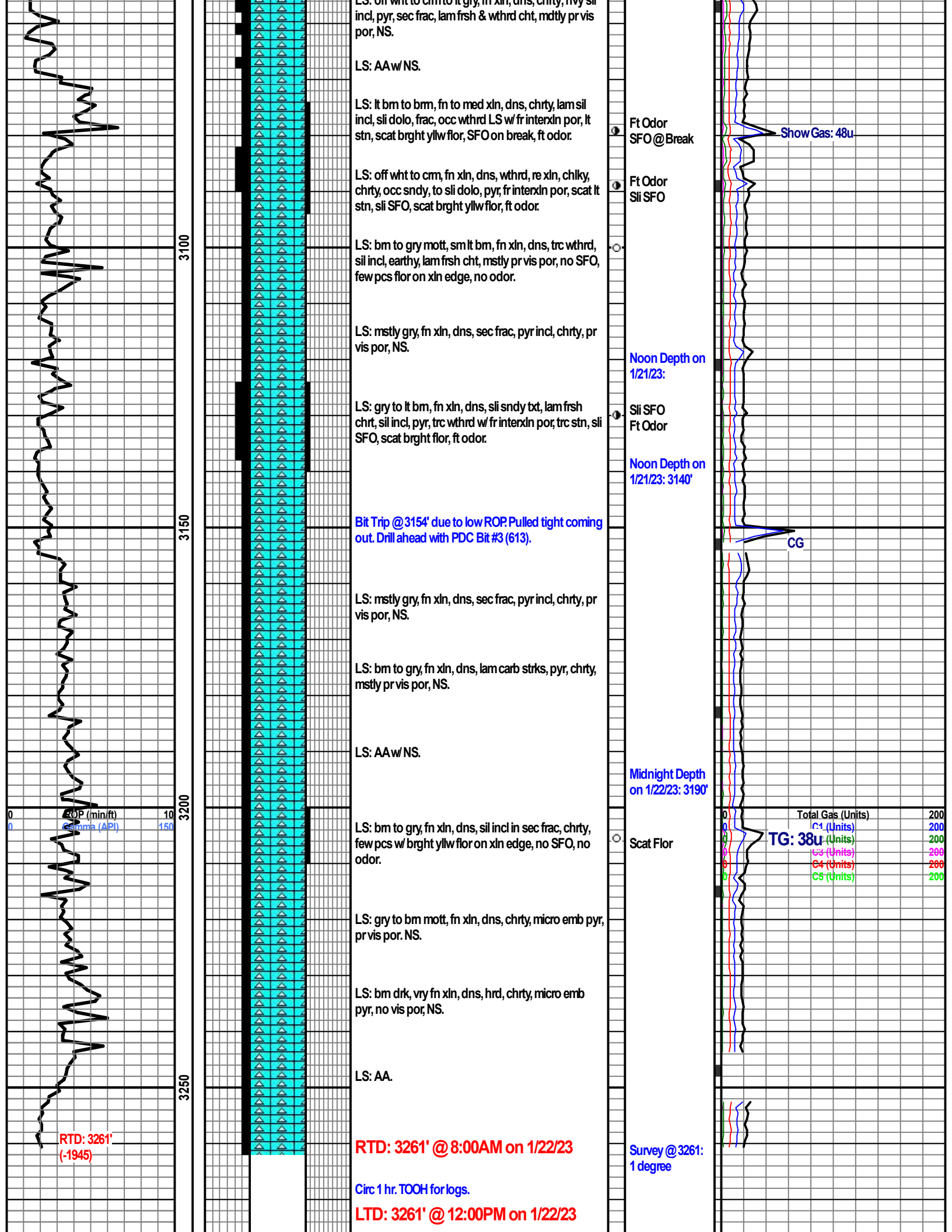












[illegible]

Elite Cementing & Acidizing of KS, LLC
PO Box 92
Eureka, KS 67045



Date	Invoice #
1/27/2023	7011

Bill To	
Val Energy Inc. 125 N. Market St., Suite 1110 Wichita, KS 67202	
Customer ID#	1217

Job Date	1/23/2023
Lease Information	
James Gang Outlaws #1-20	
County	Cowley
Foreman	KM

			Terms	Net 15
Item	Description	Qty	Rate	Amount
C102	Cement Pump-Longstring	1	1,180.00	1,180.00
C107	Pump Truck Mileage (one way)	90	5.00	450.00
C203	Pozmix Cement 60/40	135	15.75	2,126.25T
C206	Gel Bentonite	695	0.30	208.50T
C208	Pheno Seal	270	1.55	418.50T
C201	Thick Set Cement	100	24.25	2,425.00T
C207	KolSeal	500	0.56	280.00T
C208	Pheno Seal	200	1.55	310.00T
C108B	Ton Mileage-per mile (one way)	1,017.9	1.50	1,526.85
C661	5 1/2" AFU Float Shoe	1	364.00	364.00T
C421	5 1/2" Latch Down Plug	1	285.00	285.00T
C604	5 1/2" Cement Basket	1	278.00	278.00T
C504	5 1/2" Centralizer	5	59.00	295.00T
C222	KCL	2	32.00	64.00T
D101	Discount on Services		-157.83	-157.83
D102	Discount on Materials		-352.71	-352.71T

We appreciate your business!

Phone #	Fax #	E-mail
620-583-5561	620-583-5524	rene@elitecementing.com

Send payment to:
Elite Cementing & Acidizing of KS, LLC
PO Box 92
Eureka, KS 67045

Subtotal	\$9,700.56
Sales Tax (6.5%)	\$435.60
Total	\$10,136.16
Payments/Credits	\$0.00
Balance Due	\$10,136.16

Camp *Eureka*

Job Type <u>Long/Short</u>	Hole Depth <u>3260' K.B.</u>	Slurry Vol. <u>33 BBL 2000</u>	Tubing _____
Casing Depth <u>3256' K.B.</u>	Hole Size <u>7 7/8"</u>	Slurry Wt. <u>13.3" - 13.9"</u>	Drill Pipe _____
Casing Size & Wt. <u>5 1/2" 14"</u>	Cement Left in Casing <u>0'</u>	Water Gal/SK _____	Other _____
Displacement <u>71.5 BBL</u>	Displacement PSI <u>1000</u>	Bump Plug to <u>1500 PSI</u>	BPM _____

Remarks: Safety Netting; 5 1/2" 14" used Casings set @ 3256' K.B. Bore up to 5 1/2" casing. Break
Circulation of 5 bbl. Fresh water. Mixed 100 sks 60/40 Pozmix Cement w/ 6% Gel, 2" Phenasant/
sk @ 13.3 #/gal. Yield 1.57 = 28 bbl. slurry. Tilt in w/ 100 sks Thick set Cement w/ 5" Lat-sent/sk.
2" Phenasant/sk @ 12.8 #/gal. Yield 1.85 = 33 bbl. slurry, wash out Pump & Lines. Shut down.
Release Hatch down Plug. Displace Plug to Seat w/ 7.5 bbl. Fresh water. (Kil in First 4 bbl.)
Final Pumping Pressure 1000 psi. Bore Plug to 1500 psi, wait 2 mins. Release Pressure. Float
& Plug Held. Good Circulation in all times while Cementing. Job Complete. Rig down.

Prof. R. H. Zosel, M. H. 15868

Costalgees on "3574 H" *Basket* at top of "1"

Authorization By Rick Title Vol Company Rep

Total

10/36/16

I agree to the payment terms and conditions of services provided on the back of this job ticket. Any amendments to payment terms must be in writing on the front of this job ticket or in the Customer's records at ELITE's office.

Elite Cementing & Acidizing of KS, LLC
PO Box 92
Eureka, KS 67045



Date	Invoice #
1/20/2023	7020

Bill To	
Val Energy Inc. 125 N. Market St., Suite 1110 Wichita, KS 67202	
Customer ID#	1217

Job Date	1/17/2023
Lease Information	
James Gang Outlaws 1-20	
County	Cowley
Foreman	RM

Item	Description	Qty	Terms	Net 15
			Rate	Amount
C101	Cement Pump-Surface	1	950.00	950.00
C107	Pump Truck Mileage (one way)	60	5.00	300.00
C200	Class A Cement-94# sack	200	18.55	3,710.00T
C205	Calcium Chloride	565	0.75	423.75T
C206	Gel Bentonite	375	0.30	112.50T
C209	Flo-Seal	50	2.80	140.00T
C108B	Ton Mileage-per mile (one way)	564	1.50	846.00
D101	Discount on Services		-104.80	-104.80
D102	Discount on Materials		-219.31	-219.31T

We appreciate your business!

Phone #	Fax #	E-mail
620-583-5561	620-583-5524	rene@elitecementing.com

Send payment to:
Elite Cementing & Acidizing of KS, LLC
PO Box 92
Eureka, KS 67045

Subtotal	\$6,158.14
Sales Tax (6.5%)	\$270.85
Total	\$6,428.99
Payments/Credits	\$0.00
Balance Due	\$6,428.99



Camp Eschscholtz

Job Type Surf Plug Hole Depth 100' LB Slurry Vol. 45000 Tubing _____
Casing Depth 500' Hole Size 10 7/8" Slurry Wt. 1.0 Drill Pipe _____
Casing Size & Wt. 5.00 22.5" Cement Left in Casing 500' Water Gal/SK _____ Other _____
Displacement 135% Displacement PSI _____ Bump Plug to _____ BPM _____

[illegible]

Authorization 10/10/11 Title 10/10/11 Total 10/10/11

I agree to the payment terms and conditions of services provided on the back of this job ticket. Any amendments to payment terms must be in writing on the front of this job ticket or in the Customer's records at ELITE's office.