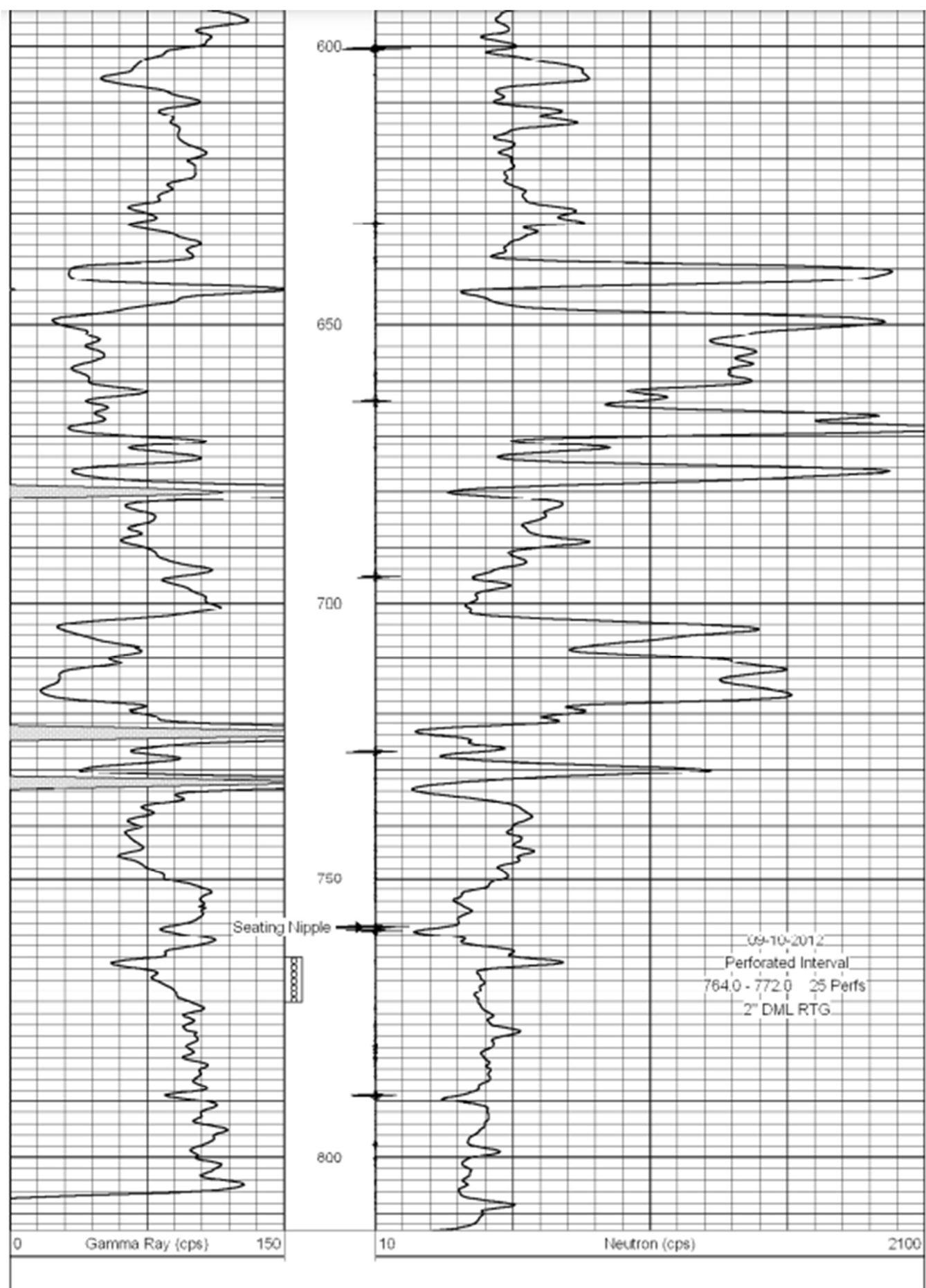


Form	ACO1 - Well Completion
Operator	Owens Oil Company, LLC
Well Name	CRESS 3
Doc ID	1673595

Casing

Purpose Of String	Size Hole Drilled	Size Casing Set	Weight	Setting Depth	Type Of Cement	Number of Sacks Used	Type and Percent Additives
Surface	11.625	7	25	40	Portland	20	none
Production	5.625	2.875	10.5	818	OWC	126	2% Gel



**OWENS PETROLEUM SERVICES, LLC
DRILLER'S LOG**

Operator: Legend Oil & Gas

Lease / Well #: Cress #3

API #: 15-207-28176-0000 22-25-17 WOCO

	Date		Date		Date		Date
Spud/Surface	8-23-12	Drilled to TD	8-27-12	Logged		1"/rods, pump	
Set Surface	8-23-12	Run Casing	8-27-12	Perforated		Lead Line/Elec	
Spud/Casing	8-24-12	Cemented LS	8-29-12	Frac/Acidized		Closed Pit	

Purpose	Size Drilled	Size Pipe	Weight #/ft	Setting Depth	Cement	# Sacks	Additives
Surface:	11 3/8	7"	new	40	monarch	20	—
Casing:	5 1/2	2 1/2	used	818			
Frac:							

Driller's TD:	835 ft	Seat Nipple:	758 ft	Pipe TD:	818 ft	Fluid Volume:	bbbs
---------------	--------	--------------	--------	----------	--------	---------------	------

Surface Bit and Subs: 3.70'

Kelly: Top of Groove to Square: 22.60'

Footage Above Ground Level: 1 Total

FOOTAGE:

FORMATION:

Bit and Sub	8-23-12	19.9	Pit taking water badly - had Kelly bring up 20
1st Collar	19.9	41.8	Brags at Bentonite (Kelly will add this to cementing 6111)
2nd Collar	8-24-12	20.0	41.8 Mixed Bentonite in pit
Joints 20.7' x	62.5	S	
2	83.2	L 84-	
3	103.9	-110- L 114	
4	124.6	L	
5	145.3	L	
6	166.0	L	
7	186.7	L - 184	
8	207.4	L 214	
9	228.1	L 225	
10	248.8	L	
11	269.5	L	
12	290.2	L	
13	310.9	L	
14	331.6	L	
15	352.3	L	
16	373.0	L - 380	
17	393.7	S	
18	414.4	S	
19	435.1	S	
20	455.8	S	
21	476.5	S	
22	497.2	L 509-512	
23	517.9	S	
24	538.6	L 552-554	

R: Legend

LEASE/WELL# Cross #3

FOOTAGE:

FORMATION:

25	559.3	L566-561	L570-574	
26	580.0	S		oil show 594? good show odor
27	600.7	L665-666	L663	looks like upper squirrel
28	621.4		L659-	
29	642.1	-644	L648-	
30	662.8	L665 -670	L675-674	
31	683.5	S		
32	704.2	L703-718		
33	724.9	L729-732	samples →	732-734 shale
34	745.6	L762	samples →	714-736 shale
35	766.3			736-738 sand & shale odor slight sh
36	787.0	S		738-740 sand & shale better odor
37	807.7	S		740-743 good sand good show
38	828.4	S		743-745 good sand good show
39	849.1			745-747 sand-some shale good show
40	869.8			747-749 mostly shale slight show
41	890.5			749-751 all sandy shale
42	911.2			
43	931.9			
44	952.6			
45	973.3			763-764 little bit of sand slight odor
46	994.0			764-766 good sand - show
47	1014.7	SIN 758		766-768 mostly sand show
48	1035.4			768-770 mostly sand - show
49	1056.1			770-772 some sand - mostly shale
50	1076.8			772-774 shale
51	1097.5			
52	1118.2			
53	1138.9			
54	1159.6			
55	1180.3			
56	1201.0			
57	1221.7			
58	1242.4			
59	1263.1			
60	1283.8			
61	1304.5			
62	1325.2			
63	1345.9			
64	1366.6			
65	1387.3			
66	1408.0			
67	1428.7			
68	1449.4			
69	1470.1			

Kepley Well Service, LLC19245 Ford Road
Chanute, KS 66720

Date

9/6/2012

Invoice #

47089

Cement Treatment Report

Legend Oil & Gas Ltd.
Suite 230, 840 6th Avenue SW
Calgary Alberta CANADA T2P 3E5

(x) Landed Plug on Bottom at 900 PSI
() Shut in Pressure
(x) Good Cement Returns
() Topped off well with _____ sacks
(x) Set float shoe

TYPE OF TREATMENT: Production Casing
HOLE SIZE: 5 7/8"
TOTAL DEPTH: 835

Well Name	Terms	Due Date		
	Net 15 days	9/6/2012		
Service or Product	Qty	Per Foot Pricing/Unit Pricing	Amount	
Cement 2 7/8"	818	3.00	2,454.00	
Sales Tax		7.30%	0.00	
<div>8-29-12 Cress #3 Woodson County Section: 22 Township: 25 Range: 17</div>				

Hooked onto 2 7/8" casing. Established circulation with 4 barrels of water, 2 GEL, METSO, COTTONSEED ahead, blended 126 sacks of 2% cement, dropped rubber plug, and pumped 5 barrels of water

Total	\$2,454.00
Payments/Credits	\$0.00
Balance Due	\$2,454.00