

KANSAS CORPORATION COMMISSION
OIL & GAS CONSERVATION DIVISION

TEMPORARY ABANDONMENT WELL APPLICATION

OPERATOR: License#
Name:
Address 1:
Address 2:
City: State: Zip:
Contact Person:
Phone:
Contact Person Email:
Field Contact Person:
Field Contact Person Phone:

API No. 15-
Spot Description:
Sec. Twp. S. R.
GPS Location: Lat: Long:
Datum: NAD27 NAD83 WGS84
County: Elevation:
Lease Name: Well #:
Well Type: Oil Gas OG WSW Other:
SWD Permit #: ENHR Permit #:
Gas Storage Permit #:
Spud Date: Date Shut-In:

Table with 7 columns: Conductor, Surface, Production, Intermediate, Liner, Tubing. Rows include Size, Setting Depth, Amount of Cement, Top of Cement, Bottom of Cement.

Casing Fluid Level from Surface: How Determined? Date:
Casing Squeeze(s): to w / sacks of cement, to w / sacks of cement. Date:
Do you have a valid Oil & Gas Lease? Yes No
Depth and Type: Junk in Hole at Tools in Hole at Casing Leaks: Yes No Depth of casing leak(s):
Type Completion: ALT. I ALT. II Depth of: DV Tool: w / sacks of cement Port Collar: w / sack of cement
Packer Type: Size: Inch Set at: Feet
Total Depth: Plug Back Depth: Plug Back Method:

Geological Data:

Table with 4 columns: Formation Name, Formation Top, Formation Base, Completion Information. Rows 1 and 2.

UNDER PENALTY OF PERJURY I HEREBY ATTEST THAT THE INFORMATION CONTAINED HEREIN IS TRUE AND CORRECT TO THE BEST OF MY KNOWLEDGE

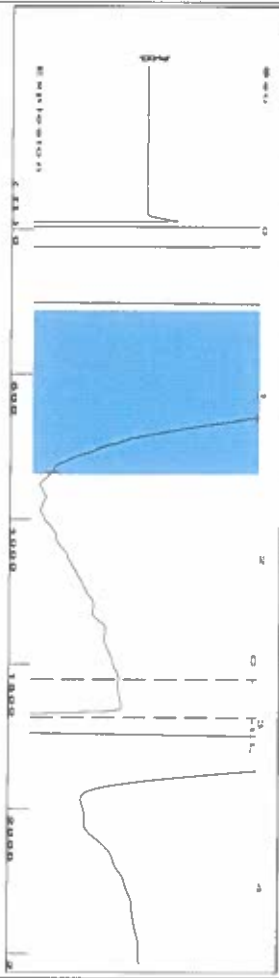
Submitted Electronically

Do NOT Write in This Space - KCC USE ONLY
Date Tested: Results: Date Plugged: Date Repaired: Date Put Back in Service:
Review Completed by: Comments:
TA Approved: Yes Denied Date:

Mail to the Appropriate KCC Conservation Office:

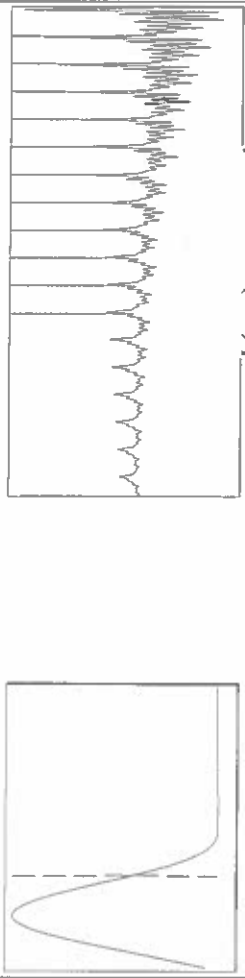
Table with 2 columns: Office Address, Phone. Rows for KCC District Office #1, #2, #3, #4.

Group: SUBLETTE Well: Franz Land Co 7 (acquired on: 04/15/25 14:25:22)



Filter Type High Pass Automatic Collar Count Yes  
 Manual Acoustic Veloc 1116.2 ft/s Manual JTS/sec 17.6056  
 Time 2.964 sec  
 Joints 53.0146 Jts  
 Depth 1680.56 ft

0.5 to 1.5 (Sec)



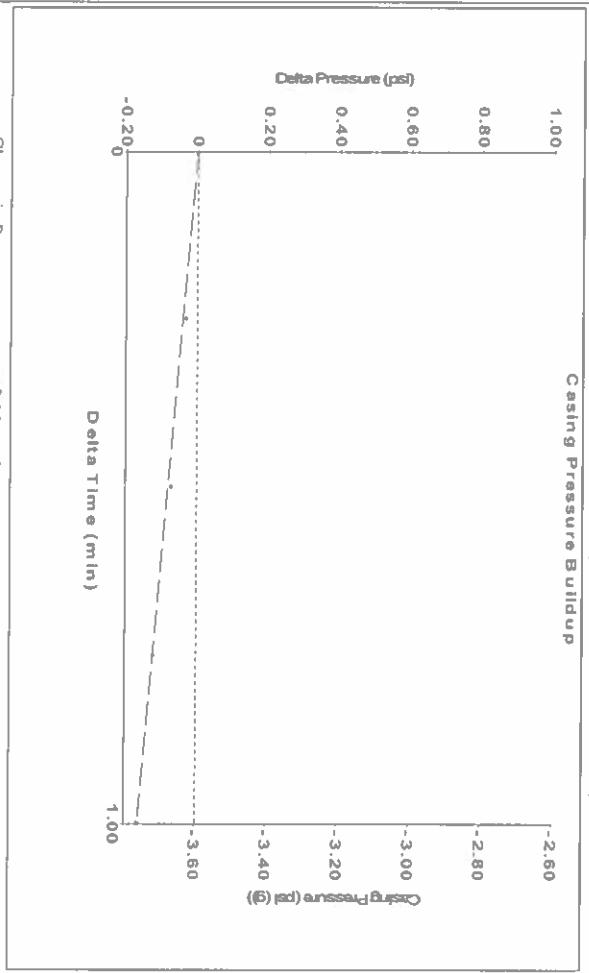
Analysis Method: Automatic

Group: SUBLETTE Well: Franz Land Co 7 (acquired on: 04/15/25 14:25:22)

Production Current	Potential	Casing Pressure	Producing
Oil -*-	-*- BBL/D	-3.6 psi (g)	Annular Gas Flow 0 Msc/D
Water -*-	-*- BBL/D	Casing Pressure Buildup -0.163 psi	% Liquid 100 %
Gas -*-	-*- Msc/D	1.00 min	
IPR Method PBHP/SBHP	Vogel -*-	Gas/Liquid Interface Pressure -3.0 psi (g)	
Production Efficiency 0.0			
Oil 40 deg API		Liquid Level Depth 1680.56 ft	
Water 1.05 Sp.Gr.H2O		Pump Intake Depth 5444.00 ft	
Gas 0.84 Sp.Gr.AIR		Formation Depth 5455.00 ft	
Acoustic Velocity 1133.98 ft/s			
Formation Submergence			Pump Intake 1218.7 psi (g)
Total Gaseous Liquid Column HIT (TVDD) 3763 ft			Producing BHP 1223.7 psi (g)
Equivalent Gas Free Liquid HIT (TVDD) 3763 ft			Static BHP -*- psi (g)

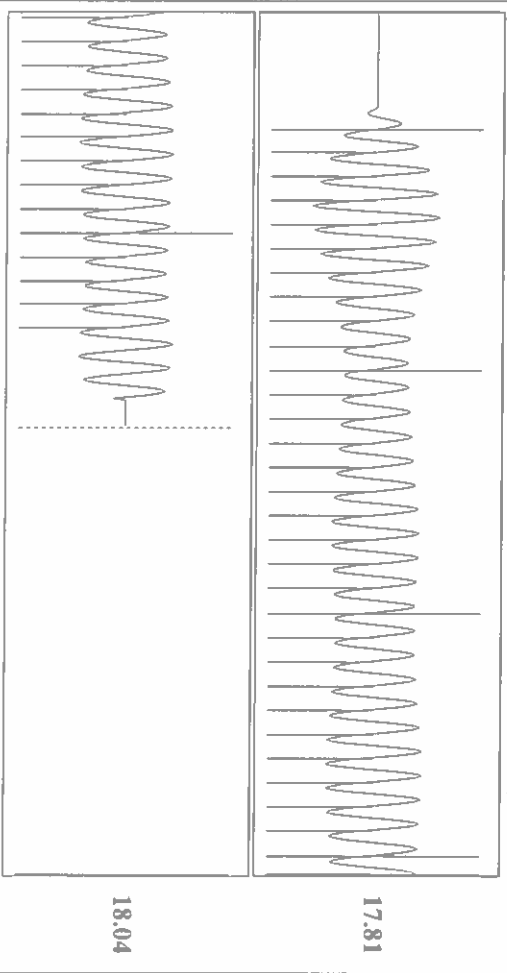


Group: SUBLETTE Well: Franz Land Co 7 (acquired on: 04/15/25 14:25:22)



Change in Pressure -0.16 psi PT14679  
 Change in Time 1.00 min Range 0 - ? psi

Group: SUBLETTE Well: Franz Land Co 7 (acquired on: 04/15/25 14:25:22)



Acoustic Velocity 1133.98 ft/s Joints counted 44  
 Joints Per Second 17.8862 jts/sec Joints to liquid level 53.0146  
 Depth to liquid level 1680.56 ft Filter Width 15.6056  
 Automatic Collar Count Yes Time to 1st Collar 0.272

18.04

17.81

Conservation Division  
District Office No. 1  
210 E. Frontview, Suite A  
Dodge City, KS 67801



Phone: 620-682-7933  
<http://kcc.ks.gov/>

Andrew J. French, Chairperson  
Dwight D. Keen, Commissioner  
Annie Kuether, Commissioner

Laura Kelly, Governor

05/07/2025

Idania Medina  
Merit Energy Company, LLC  
13727 NOEL ROAD, SUITE 1200  
DALLAS, TX 75240-7362

Re: Temporary Abandonment  
API 15-175-22152-00-00  
Franz Land Company 7-B22-31-33  
NE/4 Sec.22-31S-33W  
Seward County, Kansas

Dear Idania Medina:

"Your temporary abandonment (TA) application for the well listed above has been approved. In accordance with K.A.R. 82-3-111 the TA status of this well will expire 05/07/2026.

- \* If you return this well to service or plug it, please notify the District Office.
- \* If you sell this well you are required to file a Transfer of Operator form, T-1.
- \* If the well will remain temporarily abandoned, you must submit a new TA application, CP-111, before 05/07/2026.

You may contact me at the number above if you have questions.

Very truly yours,

Michael Maier"