

KANSAS CORPORATION COMMISSION  
OIL & GAS CONSERVATION DIVISION

Form must be Typed

Form must be signed

All blanks must be complete

## TEMPORARY ABANDONMENT WELL APPLICATION

OPERATOR: License# \_\_\_\_\_

Name: \_\_\_\_\_

Address 1: \_\_\_\_\_

Address 2: \_\_\_\_\_

City: \_\_\_\_\_ State: \_\_\_\_\_ Zip: \_\_\_\_\_ + \_\_\_\_\_

Contact Person: \_\_\_\_\_

Phone: ( \_\_\_\_\_ ) \_\_\_\_\_

Contact Person Email: \_\_\_\_\_

Field Contact Person: \_\_\_\_\_

Field Contact Person Phone: ( \_\_\_\_\_ ) \_\_\_\_\_

API No. 15- \_\_\_\_\_

Spot Description: \_\_\_\_\_

\_\_\_\_ - \_\_\_\_ - \_\_\_\_ - \_\_\_\_ Sec. \_\_\_\_\_ Twp. \_\_\_\_\_ S. R. \_\_\_\_\_ ☐ E ☐ W\_\_\_\_\_ feet from ☐ N / ☐ S Line of Section\_\_\_\_\_ feet from ☐ E / ☐ W Line of Section

GPS Location: Lat: \_\_\_\_\_, Long: \_\_\_\_\_

Datum: ☐ NAD27 ☐ NAD83 ☐ WGS84County: \_\_\_\_\_ Elevation: \_\_\_\_\_ ☐ GL ☐ KB

Lease Name: \_\_\_\_\_ Well #: \_\_\_\_\_

Well Type: (check one) ☐ Oil ☐ Gas ☐ OG ☐ WSW ☐ Other: \_\_\_\_\_☐ SWD Permit #: \_\_\_\_\_ ☐ ENHR Permit #: \_\_\_\_\_☐ Gas Storage Permit #: \_\_\_\_\_

Spud Date: \_\_\_\_\_ Date Shut-In: \_\_\_\_\_

	Conductor	Surface	Production	Intermediate	Liner	Tubing
Size						
Setting Depth						
Amount of Cement						
Top of Cement						
Bottom of Cement						

Casing Fluid Level from Surface: \_\_\_\_\_ How Determined? \_\_\_\_\_ Date: \_\_\_\_\_

Casing Squeeze(s): \_\_\_\_\_ to \_\_\_\_\_ w / \_\_\_\_\_ sacks of cement, \_\_\_\_\_ to \_\_\_\_\_ w / \_\_\_\_\_ sacks of cement. Date: \_\_\_\_\_

Do you have a valid Oil & Gas Lease? ☐ Yes ☐ NoDepth and Type: ☐ Junk in Hole at \_\_\_\_\_ ☐ Tools in Hole at \_\_\_\_\_ Casing Leaks: ☐ Yes ☐ No Depth of casing leak(s): \_\_\_\_\_Type Completion: ☐ ALT. I ☐ ALT. II Depth of: ☐ DV Tool: \_\_\_\_\_ w / \_\_\_\_\_ sacks of cement ☐ Port Collar: \_\_\_\_\_ w / \_\_\_\_\_ sack of cement

Packer Type: \_\_\_\_\_ Size: \_\_\_\_\_ Inch Set at: \_\_\_\_\_ Feet

Total Depth: \_\_\_\_\_ Plug Back Depth: \_\_\_\_\_ Plug Back Method: \_\_\_\_\_

**Geological Data:****Formation Name**

Formation Top Formation Base

Completion Information

1. \_\_\_\_\_ At: \_\_\_\_\_ to \_\_\_\_\_ Feet Perforation Interval \_\_\_\_\_ to \_\_\_\_\_ Feet or Open Hole Interval \_\_\_\_\_ to \_\_\_\_\_ Feet

2. \_\_\_\_\_ At: \_\_\_\_\_ to \_\_\_\_\_ Feet Perforation Interval \_\_\_\_\_ to \_\_\_\_\_ Feet or Open Hole Interval \_\_\_\_\_ to \_\_\_\_\_ Feet

UNDER PENALTY OF PERJURY I HEREBY ATTEST THAT THE INFORMATION CONTAINED HEREIN IS TRUE AND CORRECT TO THE BEST OF MY KNOWLEDGE

Submitted Electronically

**Do NOT Write in This  
Space - KCC USE ONLY**

Date Tested: \_\_\_\_\_ Results: \_\_\_\_\_ Date Plugged: \_\_\_\_\_ Date Repaired: \_\_\_\_\_ Date Put Back in Service: \_\_\_\_\_

Review Completed by: \_\_\_\_\_ Comments: \_\_\_\_\_

TA Approved: ☐ Yes ☐ Denied Date: \_\_\_\_\_**Mail to the Appropriate KCC Conservation Office:**

	KCC District Office #1 - 210 E. Frontview, Suite A, Dodge City, KS 67801	Phone 620.682.7933
	KCC District Office #2 - 3450 N. Rock Road, Building 600, Suite 601, Wichita, KS 67226	Phone 316.337.7400
	KCC District Office #3 - 137 E. 21st St., Chanute, KS 66720	Phone 620.902.6450
	KCC District Office #4 - 2301 E. 13th Street, Hays, KS 67601-2651	Phone 785.261.6250



## Liquid Level

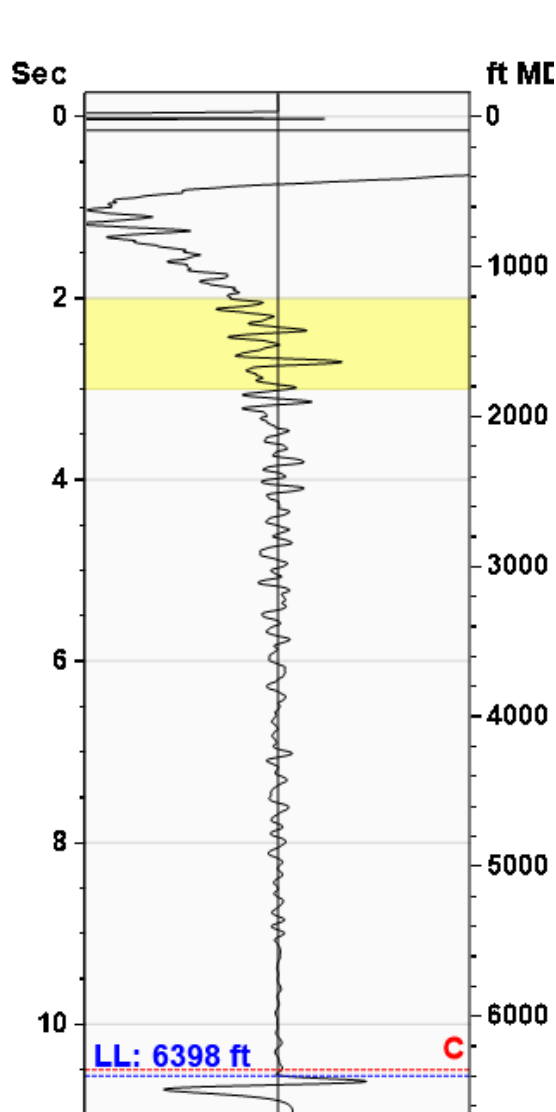
6398 ft MD

Fluid Above Pump

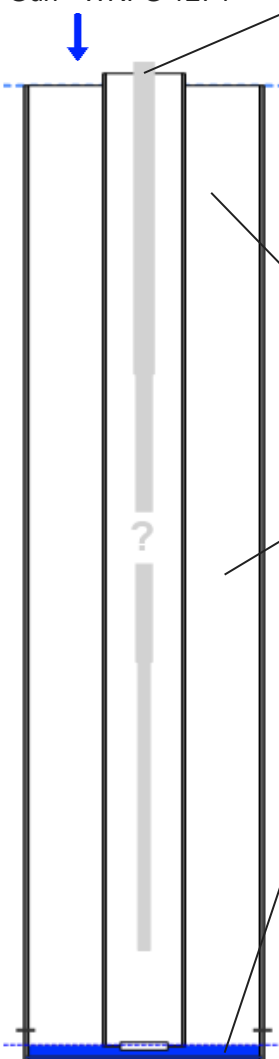
9 ft TVD

Equivalent Gas Free Above Pump

9 ft TVD



Gun - WRFG 1274



### Production

Date Entered	05/20/25		
	Current	Potential	
Oil	**	**	BBL/D
Water	**	**	BBL/D
Gas	**	**	Mscf/D
IPR Method	Vogel		
PBHP/SBHP	-0.00		
Producing Efficiency	0.00%		

### Casing Pressure

Pressure	67.6 psi (g)
----------	--------------

### Annular Gas Flow

Gas Flow	0.3 Mscf/D
----------	------------

### Fluid Properties

% Liquid Above Pump	100.00%
% Liquid Below Pump	**

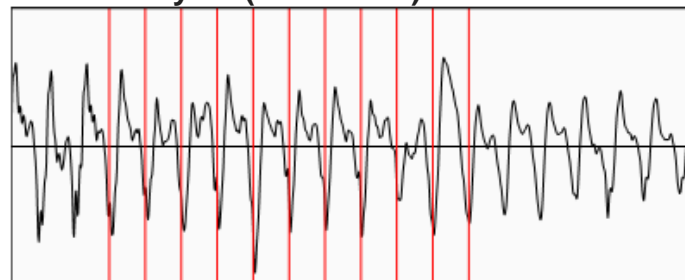
### Depths

Pump Intake Depth	6407 ft
Formation Depth	6407 ft

### Wellbore Pressures

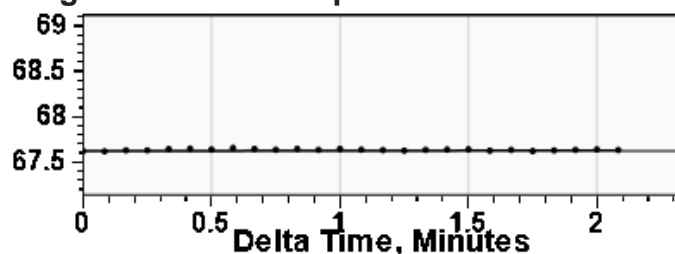
PIP	85.7 psi (g)
PBHP	85.7 psi (g)
SBHP	**
Gas/Liq Interface	82.7 psi (g)

### Collar Analysis (Automatic)



Average Acoustic Velocity	1211 ft/s
Average Joints Per Sec.	19.10 Jts/sec
Joints To Liquid	201.84 Jts

### Casing Pressure Buildup



Casing Pressure	67.6 psi (g)
Buildup	0.0 psi (g)
Buildup Time	2 min 5 sec
Gas Gravity from Collar Analysis (Automatic)	0.7837 Air = 1

### Comments and Recommendations

CP111 Shot 375psi

Echometer Company  
5001 Ditto Lane  
Wichita Falls, TX 76302  
(940) 767-4334  
info@echometer.com

05/22/2025

AMANDA LAIR  
BCE-Mach LLC  
14201 WIRELESS WAY, SUITE 300  
OKLAHOMA CITY, OK 73134-2521

Re: Temporary Abandonment  
API 15-175-21520-00-00  
WETTSTEIN A 3  
NE/4 Sec.10-34S-34W  
Seward County, Kansas

Dear AMANDA LAIR:

"Your temporary abandonment (TA) application for the well listed above has been approved. In accordance with K.A.R. 82-3-111 the TA status of this well will expire 05/22/2026.

- \* If you return this well to service or plug it, please notify the District Office.
- \* If you sell this well you are required to file a Transfer of Operator form, T-1.
- \* If the well will remain temporarily abandoned, you must submit a new TA application, CP-111, before 05/22/2026.

You may contact me at the number above if you have questions.

Very truly yours,

Michael Maier"