

KANSAS CORPORATION COMMISSION
OIL & GAS CONSERVATION DIVISION

TEMPORARY ABANDONMENT WELL APPLICATION

OPERATOR: License#
Name:
Address 1:
Address 2:
City: State: Zip:
Contact Person:
Phone:
Contact Person Email:
Field Contact Person:
Field Contact Person Phone:

API No. 15-
Spot Description:
Sec. Twp. S. R.
GPS Location: Lat: Long:
Datum: NAD27 NAD83 WGS84
County: Elevation:
Lease Name: Well #:
Well Type: Oil Gas OG WSW Other:
SWD Permit #: ENHR Permit #:
Gas Storage Permit #:
Spud Date: Date Shut-In:

Table with 7 columns: Conductor, Surface, Production, Intermediate, Liner, Tubing. Rows include Size, Setting Depth, Amount of Cement, Top of Cement, Bottom of Cement.

Casing Fluid Level from Surface: How Determined? Date:
Casing Squeeze(s): to w / sacks of cement, to w / sacks of cement. Date:
Do you have a valid Oil & Gas Lease? Yes No
Depth and Type: Junk in Hole at Tools in Hole at Casing Leaks: Yes No Depth of casing leak(s):
Type Completion: ALT. I ALT. II Depth of: DV Tool: w / sacks of cement Port Collar: w / sack of cement
Packer Type: Size: Inch Set at: Feet
Total Depth: Plug Back Depth: Plug Back Method:

Geological Date:

Table with 4 columns: Formation Name, Formation Top, Formation Base, Completion Information. Rows 1 and 2.

UNDER PENALTY OF PERJURY I HEREBY ATTEST THAT THE INFORMATION CONTAINED HEREIN IS TRUE AND CORRECT TO THE BEST OF MY KNOWLEDGE

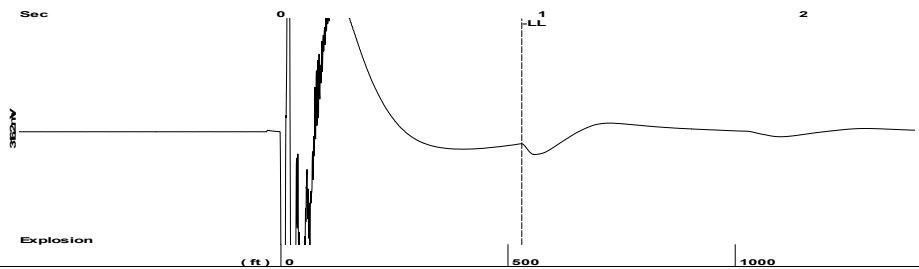
Submitted Electronically

Do NOT Write in This Space - KCC USE ONLY
Date Tested: Results: Date Plugged: Date Repaired: Date Put Back in Service:
Review Completed by: Comments:
TA Approved: Yes Denied Date:

Mail to the Appropriate KCC Conservation Office:

Table with 2 columns: Office Address, Phone. Rows for District Office #1, #2, #3, #4.

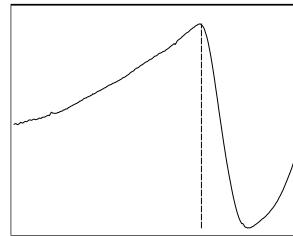
Group: MyWells Well: Chesney A 195 (acquired on: 05/22/25 09:09:13)



Time 0.922 sec
 Joints 16.7875 Jts
 Depth 530.15 ft

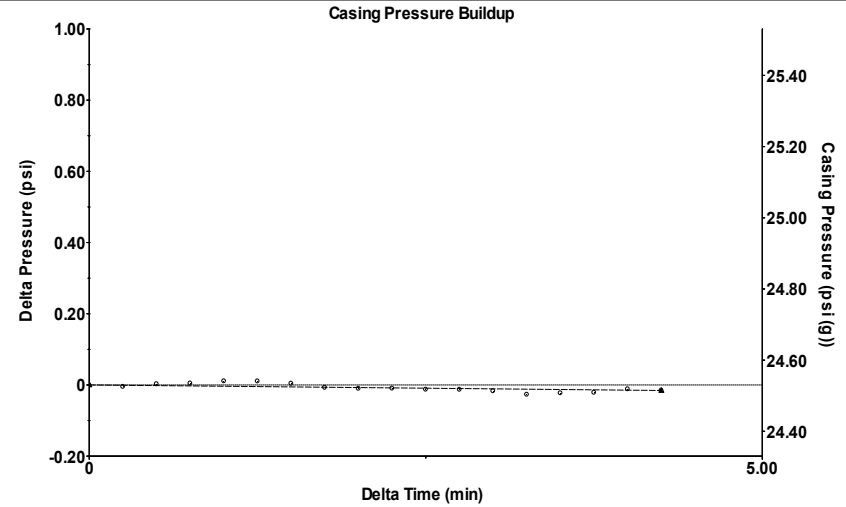
Liquid level calculated with user supplied Acoustic Velocity

Acoustic Velocity 1150 ft/s



Analysis Method: Acoustic Velocity

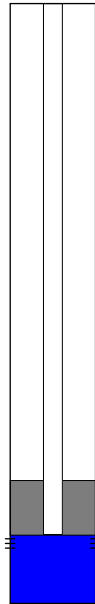
Group: MyWells Well: Chesney A 195 (acquired on: 05/22/25 09:09:13)



Change in Pressure -0.02 psi PT 2849
 Change in Time 4.25 min Range 0 - ? psi

Group: MyWells Well: Chesney A 195 (acquired on: 05/22/25 09:09:13)

Production Current	Potential	Casing Pressure	24.5 psi (g)	Producing
Oil - * -	- * - BBL/D	Casing Pressure Buildup	-0.016 psi	Annular Gas Flow
Water - * -	- * - BBL/D	Gas/Liquid Interface Pressure	4.25 min	0 Mscf/D
Gas - * -	- * - Mscf/D	Liquid Level Depth	530.15 ft	% Liquid
IPR Method	Vogel	Pump Intake Depth	600.00 ft	100 %
PBHP/SBHP	- * -	Formation Depth	611.00 ft	
Production Efficiency	0.0			
Oil 32 deg.API				
Water 1.05 Sp.Gr.H2O				
Gas 0.85 Sp.Gr.AIR				
Acoustic Velocity	1150 ft/s			
Formation Submergence				
Total Gaseous Liquid Column HT (TVD)	70 ft			
Equivalent Gas Free Liquid HT (TVD)	70 ft			
Acoustic Test				
				Pump Intake 50.4 psi (g)
				Producing BHP 55.4 psi (g)
				Static BHP - * - psi (g)



Group: MyWells Well: Chesney A 195 (acquired on: 05/22/25 09:09:13)

Entered Acoustic Velocity for Liquid Level depth determination

Conservation Division
District Office No. 2
3450 N. Rock Road
Building 600, Suite 601
Wichita, KS 67226



Phone: 316-337-7400
<http://kcc.ks.gov/>

Andrew J. French, Chairperson
Dwight D. Keen, Commissioner
Annie Kuether, Commissioner

Laura Kelly, Governor

05/29/2025

Shane Summers
Vess Oil Corporation
1700 N WATERFRONT PKWY BLDG 500
WICHITA, KS 67206-6619

Re: Temporary Abandonment
API 15-015-19646-00-00
CHESNEY A 195
NE/4 Sec.21-25S-05E
Butler County, Kansas

Dear Shane Summers:

"Your temporary abandonment (TA) application for the well listed above has been approved. In accordance with K.A.R. 82-3-111 the TA status of this well will expire 05/29/2026.

- * If you return this well to service or plug it, please notify the District Office.
- * If you sell this well you are required to file a Transfer of Operator form, T-1.
- * If the well will remain temporarily abandoned, you must submit a new TA application, CP-111, before 05/29/2026.

You may contact me at the number above if you have questions.

Very truly yours,

NEAL RUPP ECRS"