



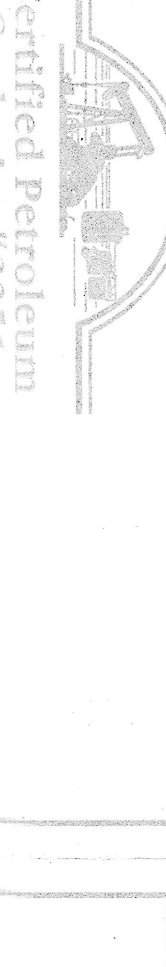


Form	ACO1 - Well Completion
Operator	Jason Oil Company, LLC
Well Name	HART-BILLIPS 2
Doc ID	1716132

#### Casing

Purpose Of String	Size Hole Drilled	Size Casing Set	Weight	Setting Depth	Type Of Cement	Number of Sacks Used	Type and Percent Additives
Surface	12.25	8.625	23	223	80/20	150	3%cc/2%gel
Production	7.875	5.5	15.5	1928	80/20 QMDC	275	1/4 flowcele





Certified Petroleum Geologist #5351  
License #224  
3651 Eveningglow Way  
Castle Rock, CO 80104  
Phone: 720-733-0420  
Cell: 786-635-1349  
E-mail: rkgeos3@hotmail.com

GEOLOGISTS WELL REPORT

COMPANY JASON OIL CO, LLC  
WELL Hart-Phillips #2  
FIELD High Plains  
LOCATION (legal) SE NE SE NE  
(footages) 1938' FNL & 103' FNL  
Section 30 TWP 6S RGE 21W  
(Map) 11 mi N of Bogue, KS  
COUNTY Graham STATE Kansas  
ELEVATION: 2250' K.B. 2242' G.L.  
Depths measured from Kelly Bushing  
A.P.L. NUMBER 15-065-24235  
GEOLOGY BY Randall Kilian

PERTINENT WELL DATA

CONTRACTOR Discovery Drilling (31548)  
RIG #4 HYDRAULICS D-375 6x14x60  
(TP Ryan Gaschler)  
DRILL PIPE 4 1/2" X-H COLLARS 6 1/2x4 1/2 17 (3241)  
CASING: SURFACE 7 7/8" @ 223' w/180 sx Common  
PRODUCTION 5 1/2" set @ 1928' w/ 275 SX QMDC  
DRILLING FLUID COMPANY Andy's Mud & Chemical Co  
TYPE Full service Chemical-Pac  
REMARKS Quality mud program  
DRILL STEM TESTS: COMPANY Triolobite Testing Inc.  
NUMBER OF TESTS Two (2)  
ELECTRIC LOGS: COMPANY Gemini Wireline  
DETAIL (6") 3200' - RTD  
TYPE DI, Comp N-D, Micro  
DRILLING TIME FROM 3200' TO RTD  
SAMPLE TIME FROM 3200' TO RTD  
SUPERVISION FROM 3200' TO RTD  
VERTICAL DEVIATION 1/4" @ 223'; 3/4" @ 2902';  
3/4" @ 3510'; 1/2" @ 3720'  
PLUGGING REPORT 30 sx Rat, 15 sx Mouse  
RESERVE PIT 400 bbls., Chl 12,000 Ca 1800

DAILY REPORT

DATE: 7 am Depth  
RIG ACTIVITY  
3-7-23 RTD  
3-8-23 Spud  
3-9-23 Drilling sand & shale  
3-10-23 2902' Bit trip  
3-11-23 3500' CFS Toronto  
3-12-23 3570' DST #2 LK E-F  
3-13-23 3720' Logging  
3-14-23 Set casing for shallow SWDM

DRILL STEM TESTS

NO	INTERVAL	HP/TIME	ISPT/TIME	ESP/TIME	HP/HP	RECOVERY
1	Top-A	50'	835'	121'	791'	1662'
2	3450-3510' LK E-F	115'	835'	45'	683'	1565'
3	3510-3570'	5'	711'	683'	1719'	755' M.O.C. Wtr
4		283'	35'	167'	1233' (3800CM) 14% Oil	
5		45'				
6		60'				

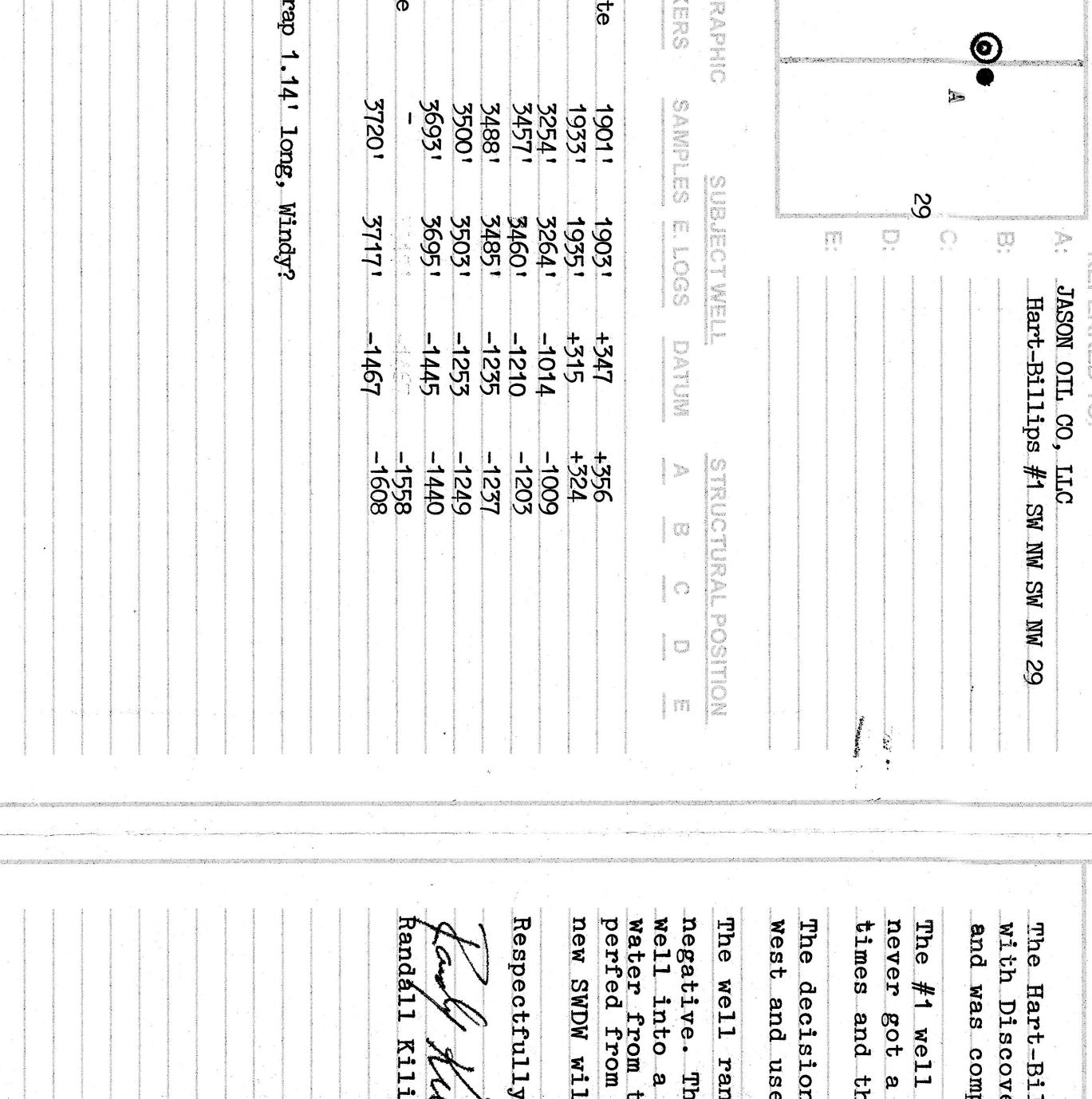
MUD RECORD

CHK	DEPTH	WT	VIS	FIL	CHL	YP
1	2989'					
2	3048'	8.5	67	8.	400	28
3	3310'	8.7	65			
4	3480'	8.7	65			
5	3510'	9.1	76	8.	600	26
6	3570'	9.2	63	8.	1k	24

BIT RECORD

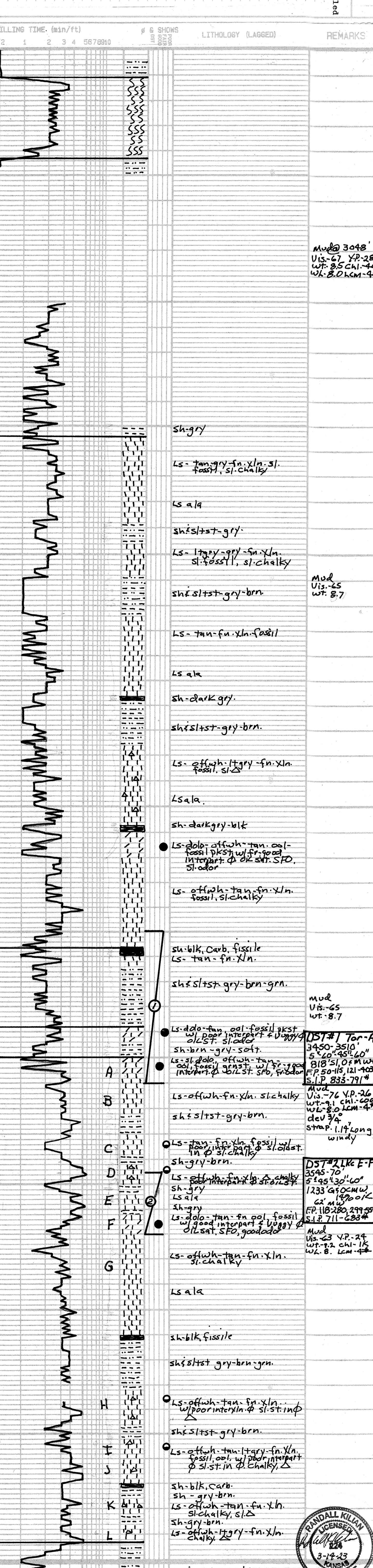
NO	SIZE	MAKE	TYPE	DEPTH/OUT	FEET	HOURS
1	12 1/2"	JZ	RR	223'	223'	2 3/4
2	7 7/8"	KLEAR	616D	2902'	2679'	19 3/4
3	7 7/8"	JZ	GX20C	3720'	818'	3 1/2

FORMATION TOPS & STRUCTURAL GEOLOGY



SUMMARY

The Hart-Phillips #2 is a replacement well. It was drilled with Discovery Drilling tools beginning March 7, 2023 and was completed March 14, 2023.  
The #1 well lost circulation when drilled. The well never got a cement job after. It was squeezed numerous times and the water could not be shut off.  
The decision was made to offset the #1 well about 500' west and use the #1 as a SWDM.  
The well ran low structurally by 2-5'. Both DST's were negative. The decision was made to set pipe to make well into a shallow SWDM. The #1 well produces oil and water from the LK A zone. The F zone needs to be perforated from 3572-75' to produce the F zone also. The new SWDM will handle water disposal.  
Respectfully,  
Randall Kilian





# QUALITY OILWELL CEMENTING, INC.

Federal Tax ID # 20-2886107

Home Office P.O. Box 32 Russell, KS 67665

No. 3053

765-283-1071  
66-224-1041

Date	Sec.	Twp.	Range	County	State	On Location	Finish
3/9/83	20	6	21	Grabeau	Kansas		2:15pm
Location				Payne - Hwy 24 - 3 1/2 mi. S. end			

Lease <u>Hart - Arby</u>		Well No. <u>2</u>	Owner To Quality Oilwell Cementing, Inc. You are hereby requested to rent cementing equipment and furnish cement and helper to assist owner or contractor to do work as listed.
Contractor <u>Reynolds Brothers</u>			
Type Job <u>Sealcrete</u>			Charge To <u>Jason P.</u>
Hole Size <u>12 1/8</u>	T.D. <u>223</u>		
Csg. <u>6 5/8</u>	Depth <u>22122</u>		
Thy. Size	Depth	City State	
Tool	Depth	The above was done to satisfaction and supervision of owner agent or contract	
Cement Left in Csg. <u>20'</u>	Shoe Joint <u>20'</u>	Cement Amount Ordered <u>150 bags 1 1/2 cu. yd.</u>	
Meas. Line	Displace <u>13</u>	Cement <u>105</u>	
EQUIPMENT		Poz. Mx. <u>35</u>	
Pumpjack <u>16</u>	No. Cementer <u>Tim</u>	Gel. <u>3</u>	
Bulkhead <u>9</u>	No. Driver <u>Brian</u>	Calcium <u>7</u>	
Bulkhead <u>20</u>	No. Dever <u>David</u>	Muds	
JOB SERVICES & REMARKS		Salt	

## Remarks:

Flat Hole:

Mouse Hole:

Centralizers:

Baskets:

DAF or Port Collar:

Run 8 1/2" and 10" Casing  
Cemented 180 lbs

Flowed

Kel-Seal

AK-10 CLR 48

OFL-117 or CC-110 CAF 38

Sand

Handling 130

Mileage

## FLOAT EQUIPMENT

Cable Shoe

Demolisher

Baskets

AFU Inserts

Float Shoe

Latch Down

Pumpjack Charge

Mileage 52

Tax

Discount

Total Charge

Signature

John J. Ad

Tim



# QUALITY OILWELL CEMENTING, INC.

Federal Tax I.D.# 20-2886107

Phone 785-483-1071  
Cell 785-324-1041

Home Office P.O. Box 32 Russell, KS 67665

No. 8003

Date	Sec.	Twp.	Range	County	State	On Location	Finish
3/13/23	30	6	21	Graham	Kansas		8:00
				Location Payne & Hwy 24 910.12200			

Lease Hart - Phillips	Well No. 2	Owner
Contractor Discovery Drilling Rig 2	To Quality Oilwell Cementing, Inc. You are hereby requested to rent cementing equipment and furnish cementer and helper to assist owner or contractor to do work as follows	
Type Job Long string	Charge To Jason Oil	
Hole Size 7 7/8	T.D. 3570'	Street
Csg. 5 1/2	Depth 1528.18	City
Tbg. Size	Depth	State
Tool	Depth	The above was done to satisfaction and supervision of owner agent or cor
Cement Left in Csg. 42.52	Shoe Joint 42.52	Cement Amount Ordered 275 3/4 QMDC 8 1/2
Meas Line	Displace 44.88	500 gal Mud Clean

## EQUIPMENT

Pumptrk	No.	Cementier	Helper	Common
17			Nick	Poz. Mix
Bulktrk	No.	Driver		Gel
20		Carry		
Bulktrk	No.	Driver		Calcium
P.V.		David		

## JOB SERVICES & REMARKS

Remarks:	
Flat Hole 30 sk.	Salt
Mouse Hole 20 sks	Flowseal
Centralizers # 1, 4, 7	Kol-Seal
Baskets # 2, 6, 21	Mud CLR 48
D/W or Port Collar	CFL-117 or CD110 CAF 38
	Sand
	Handling
Run 5 1/2" and put in circulation	Mileage
Offered to the state	
Mixed 500 gal production	
Created Run & Monitor mode	
Then cemented 5 1/2" with 2.25%	
Life pump in 600'	
Loaded plug at 1500'	
Cement did circulate	

## FLOAT EQUIPMENT

Guide Shoe
Centralizer
Baskets
AFU Inserts
Float Shoe
Latch Down
1 1/2" pipe shoe
Pumptrk Charge
Mileage

Tax

Discount





## DRILL STEM TEST REPORT

Prepared For: **Jason Oil Co LLC**

PO Box 701  
Russell, KS 67665

ATTN: Randy Killian

### **Hart-Billips #2**

### **30-6s-21w Graham,KS**

Start Date: 2023.03.11 @ 14:45:00

End Date: 2023.03.11 @ 21:27:00

Job Ticket #: 69687                      DST #: 1

Trilobite Testing, Inc

PO Box 362 Hays, KS 67601

ph: 785-625-4778 fax: 785-625-5620

Printed: 2023.03.20 @ 11:24:27





**TRILOBITE**  
**TESTING, INC.**

## DRILL STEM TEST REPORT

Jason Oil Co LLC

**30-6s-21w Graham,KS**

PO Box 701  
Russell, KS 67665

**Hart-Billips #2**

Job Ticket: 69687

**DST#: 1**

ATTN: Randy Killian

Test Start: 2023.03.11 @ 14:45:00

### GENERAL INFORMATION:

Formation: **Toronto - LKC A**

Deviated: No Whipstock: ft (KB)

Time Tool Opened: 16:31:30

Time Test Ended: 21:27:00

Test Type: Conventional Bottom Hole (Initial)

Tester: Nathan Aneas

Unit No: 71

Interval: **3450.00 ft (KB) To 3510.00 ft (KB) (TVD)**

Total Depth: 3510.00 ft (KB) (TVD)

Hole Diameter: 7.88 inches Hole Condition: Fair

Reference Elevations: 2250.00 ft (KB)

2242.00 ft (CF)

KB to GR/CF: 8.00 ft

**Serial #: 8353** Inside

Press@RunDepth: 403.25 psig @ 3451.00 ft (KB)

Start Date: 2023.03.11

End Date:

2023.03.11

Start Time: 14:45:01

End Time:

21:27:00

Capacity: 8000.00 psig

Last Calib.: 2023.03.11

Time On Btm: 2023.03.11 @ 16:30:45

Time Off Btm: 2023.03.11 @ 19:35:15

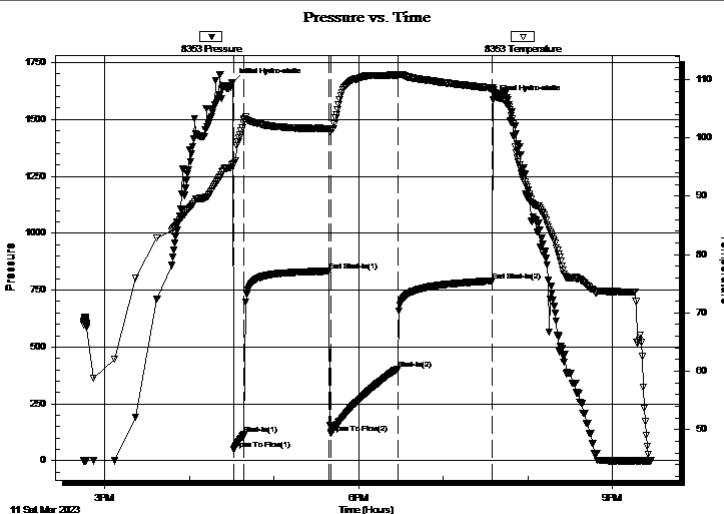
TEST COMMENT: 5:IF- Fair surface blow , BOB in 3 min, final is 19 3/4"

60:IS- No blow back

45:FF- Fair surface blow , BOB in 3 min, final is 70 1/4"

60:FS- No blow back

### PRESSURE SUMMARY



Time (Min.)	Pressure (psig)	Temp (deg F)	Annotation
0	1662.12	95.57	Initial Hydro-static
1	50.14	95.37	Open To Flow (1)
8	114.84	103.02	Shut-In (1)
68	833.16	101.59	End Shut-In (1)
70	120.99	101.42	Open To Flow (2)
117	403.25	110.75	Shut-In (2)
184	790.55	108.49	End Shut-In (2)
185	1585.23	108.62	Final Hydro-static

### Recovery

Length (ft)	Description	Volume (bbl)
62.00	MW 85%W 15%M	0.30
756.00	SOMCW 65%W30%M 5%O	10.60

### Gas Rates

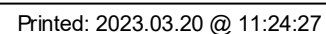
	Choke (inches)	Pressure (psig)	Gas Rate (Mcf/d)
--	----------------	-----------------	------------------



Test Start: 2023.03.11 @ 14:45:00

KB to GR/CF: 8.00 ft

60:FSI- No blow back







**TRILOBITE**  
**TESTING, INC.**

## DRILL STEM TEST REPORT

### TOOL DIAGRAM

Jason Oil Co LLC

**30-6s-21w Graham,KS**

PO Box 701  
Russell, KS 67665

**Hart-Billips #2**

Job Ticket: 69687

**DST#: 1**

ATTN: Randy Killian

Test Start: 2023.03.11 @ 14:45:00

### Tool Information

Drill Pipe:	Length:	3376.00 ft	Diameter:	3.80 inches	Volume:	47.36 bbl	Tool Weight:	25000.00 lb
Heavy Wt. Pipe:	Length:	ft	Diameter:	inches	Volume:	- bbl	Weight set on Packer:	25000.00 lb
Drill Collar:	Length:	62.00 ft	Diameter:	2.25 inches	Volume:	0.30 bbl	Weight to Pull Loose:	60000.00 lb
					Total Volume:	- bbl	Tool Chased	ft
Drill Pipe Above KB:		21.00 ft					String Weight: Initial	58000.00 lb
Depth to Top Packer:		3450.00 ft					Final	62000.00 lb
Depth to Bottom Packer:		ft						
Interval between Packers:		60.00 ft						
Tool Length:		93.00 ft						
Number of Packers:		2	Diameter:	6.75 inches				
Tool Comments:								

### Tool Description

Length (ft)	Serial No.	Position	Depth (ft)	Accum. Lengths
-------------	------------	----------	------------	----------------

Change Over Sub	1.00		3418.00	
Shut In Tool	5.00		3423.00	
Hydraulic tool	5.00		3428.00	
Jars	5.00		3433.00	
EM Tool	4.00		3437.00	
Safety Joint	3.00		3440.00	
Packer	5.00		3445.00	33.00 Bottom Of Top Packer
Packer	5.00		3450.00	
Stubb	1.00		3451.00	
Recorder	0.00	8353 Inside	3451.00	
Recorder	0.00	8676 Outside	3451.00	
Perforations	23.00		3474.00	
Change Over Sub	1.00		3475.00	
Blank Spacing	31.00		3506.00	
Change Over Sub	1.00		3507.00	
Bullnose	3.00		3510.00	60.00 Bottom Packers & Anchor
<b>Total Tool Length:</b>	<b>93.00</b>			



**TRILOBITE**  
**TESTING, INC.**

## DRILL STEM TEST REPORT

### FLUID SUMMARY

Jason Oil Co LLC

**30-6s-21w Graham,KS**

PO Box 701  
Russell, KS 67665

**Hart-Billips #2**

Job Ticket: 69687

**DST#: 1**

ATTN: Randy Killian

Test Start: 2023.03.11 @ 14:45:00

### Mud and Cushion Information

Mud Type: Gel Chem

Cushion Type:

Oil API:

deg API

Mud Weight: 9.00 lb/gal

Cushion Length:

ft

Water Salinity: 70000 ppm

Viscosity: 76.00 sec/qt

Cushion Volume:

bbl

Water Loss: 7.98 in<sup>3</sup>

Gas Cushion Type:

Resistivity: 0.17 ohm.m

Gas Cushion Pressure:

psig

Salinity: 600.00 ppm

Filter Cake: 2.00 inches

### Recovery Information

Recovery Table

Length ft	Description	Volume bbl
62.00	MW 85%W 15%M	0.305
756.00	SOMCW 65%W30%M 5%O	10.605

Total Length: 818.00 ft      Total Volume: 10.910 bbl

Num Fluid Samples: 0

Num Gas Bombs: 0

Serial #:

Laboratory Name:

Laboratory Location:

Recovery Comments: .165 @ 46 deg = 70,000 ppm



Serial #: 8353

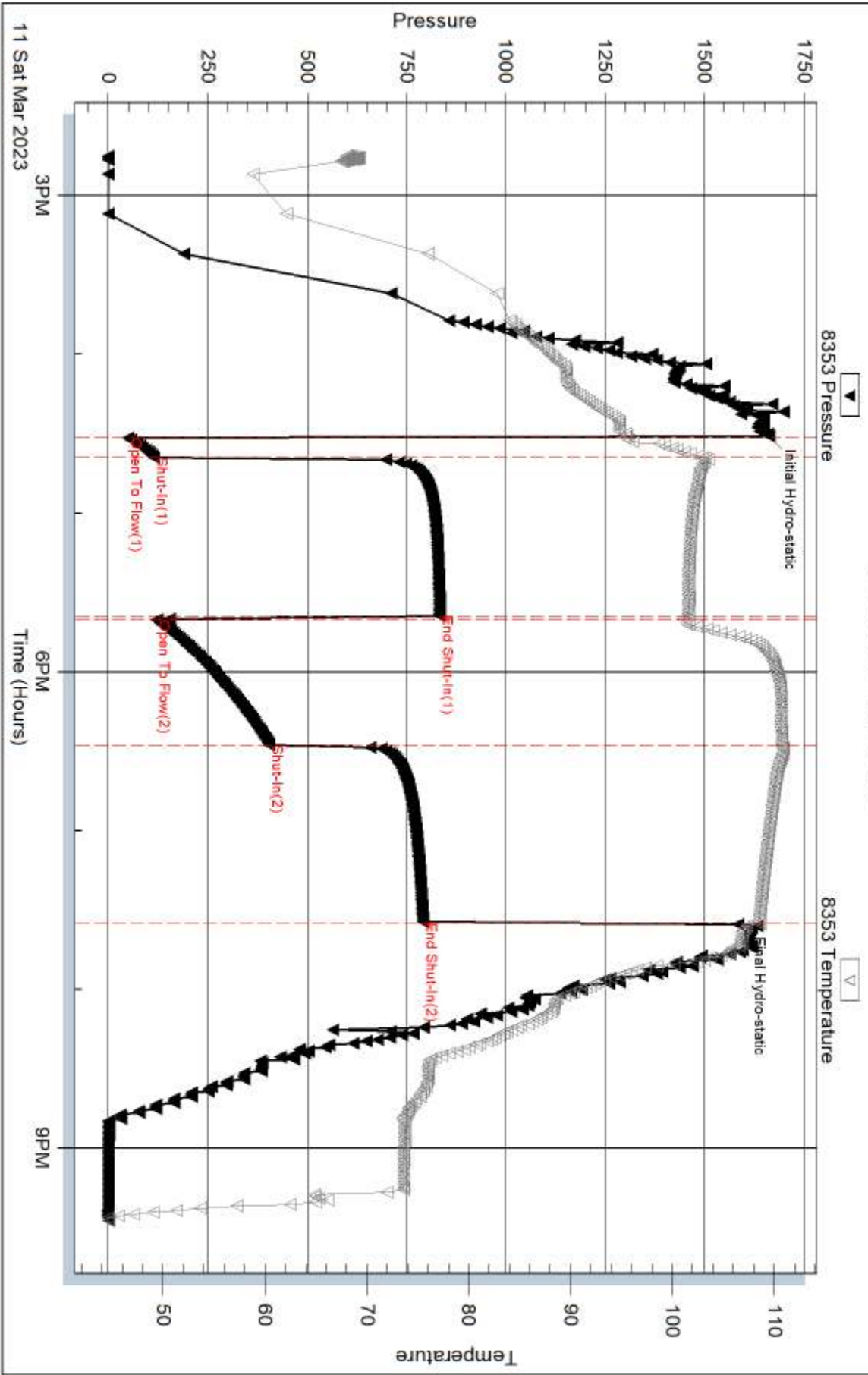
Inside

Jason Oil Co LLC

Hart-Billips #2

DST Test Number: 1

# Pressure vs. Time

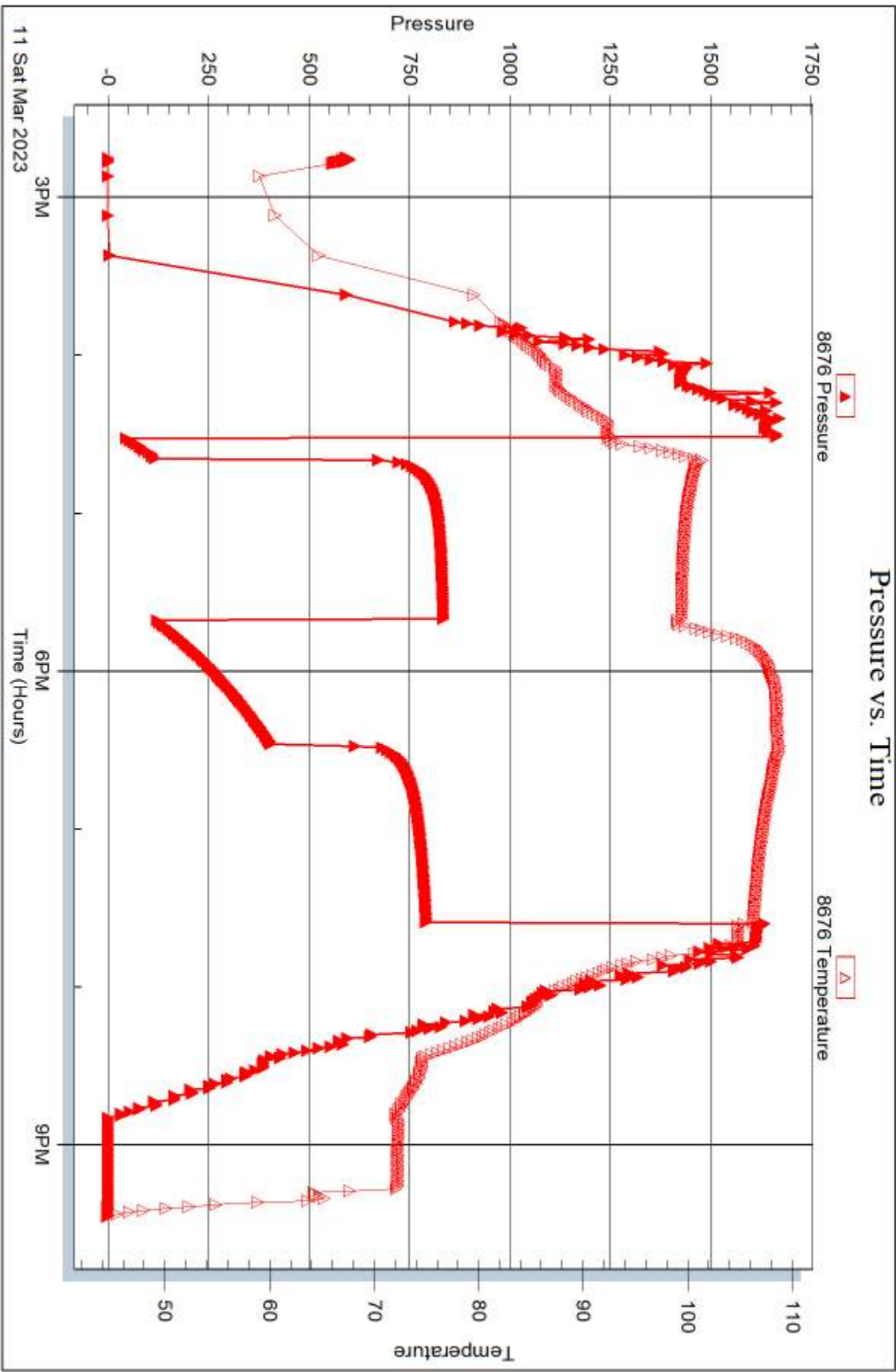


Serial #: 8676

Outside Jason Oil Co LLC

Hart-Billips #2

DST Test Number: 1





## DRILL STEM TEST REPORT

Prepared For: **Jason Oil Co LLC**

PO Box 701  
Russell, KS 67665

ATTN: Randy Killian

### **Hart-Billips #2**

### **30-6s-21w Graham,KS**

Start Date: 2023.03.12 @ 09:10:00

End Date: 2023.03.12 @ 15:52:30

Job Ticket #: 69688                      DST #: 2

Trilobite Testing, Inc

PO Box 362 Hays, KS 67601

ph: 785-625-4778 fax: 785-625-5620

Printed: 2023.03.20 @ 11:23:53



**TRILOBITE**  
**TESTING, INC.**

## DRILL STEM TEST REPORT

Jason Oil Co LLC

**30-6s-21w Graham,KS**

PO Box 701  
Russell, KS 67665

**Hart-Billips #2**

Job Ticket: 69688

**DST#: 2**

ATTN: Randy Killian

Test Start: 2023.03.12 @ 09:10:00

### GENERAL INFORMATION:

Formation: **LKC E - F**

Deviated: No Whipstock: ft (KB)

Time Tool Opened: 10:55:15

Time Test Ended: 15:52:30

Test Type: Conventional Bottom Hole (Reset)

Tester: Nathan Aneas

Unit No: 71

**Interval: 3545.00 ft (KB) To 3570.00 ft (KB) (TVD)**

Reference Elevations: 2250.00 ft (KB)

Total Depth: 3570.00 ft (KB) (TVD)

2242.00 ft (CF)

Hole Diameter: 7.88 inches Hole Condition: Fair

KB to GR/CF: 8.00 ft

**Serial #: 8353 Inside**

Press@RunDepth: 554.22 psig @ 3546.00 ft (KB)

Capacity: 8000.00 psig

Start Date: 2023.03.12

End Date:

2023.03.12

Last Calib.:

2023.03.12

Start Time: 09:10:01

End Time:

15:52:30

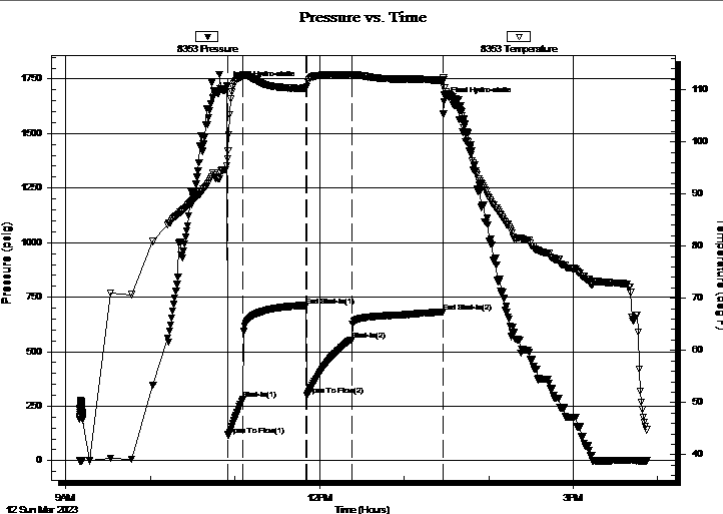
Time On Btm:

2023.03.12 @ 10:54:15

Time Off Btm:

2023.03.12 @ 13:28:15

**TEST COMMENT:** 5:IF- Strong surface blow , BOB in 1 min, final is 56 1/2"  
45:IS- Weak surface blow , built to 1/4" then died @ 25min, blow came back @ 36 min, final is 1/4"  
30:FF- Strong surface blow , BOB in 2 min, final is 76 1/2"  
60:FS- Weak surface blow in 13 min, built to 1/2" in 20 min, final is 1/2"



### PRESSURE SUMMARY

Time (Min.)	Pressure (psig)	Temp (deg F)	Annotation
0	1719.25	95.38	Initial Hydro-static
1	117.84	98.37	Open To Flow (1)
12	280.47	112.51	Shut-In(1)
56	710.58	110.32	End Shut-In(1)
57	298.96	110.56	Open To Flow (2)
89	554.22	112.89	Shut-In(2)
154	682.52	111.88	End Shut-In(2)
154	1645.85	111.90	Final Hydro-static

### Recovery

Length (ft)	Description	Volume (bbl)
62.00	MW 90%W 10%M	0.30
1233.00	SGOMCW 55%W 26%M 14%O 5%G	17.30

### Gas Rates

	Choke (inches)	Pressure (psig)	Gas Rate (Mcf/d)
--	----------------	-----------------	------------------

\* Recovery from multiple tests





**TRILOBITE**  
**TESTING, INC.**

## DRILL STEM TEST REPORT

Jason Oil Co LLC

**30-6s-21w Graham,KS**

PO Box 701  
Russell, KS 67665

**Hart-Billips #2**

Job Ticket: 69688

**DST#: 2**

ATTN: Randy Killian

Test Start: 2023.03.12 @ 09:10:00

### GENERAL INFORMATION:

Formation: **LKC E - F**

Deviated: No Whipstock: ft (KB)

Time Tool Opened: 10:55:15

Time Test Ended: 15:52:30

Test Type: Conventional Bottom Hole (Reset)

Tester: Nathan Aneas

Unit No: 71

**Interval: 3545.00 ft (KB) To 3570.00 ft (KB) (TVD)**

Total Depth: 3570.00 ft (KB) (TVD)

Hole Diameter: 7.88 inches Hole Condition: Fair

Reference Elevations: 2250.00 ft (KB)

2242.00 ft (CF)

KB to GR/CF: 8.00 ft

**Serial #: 8676 Outside**

Press@RunDepth: psig @ 3546.00 ft (KB)

Start Date: 2023.03.12

End Date:

2023.03.12

Start Time: 09:10:01

End Time:

15:52:45

Capacity: 8000.00 psig

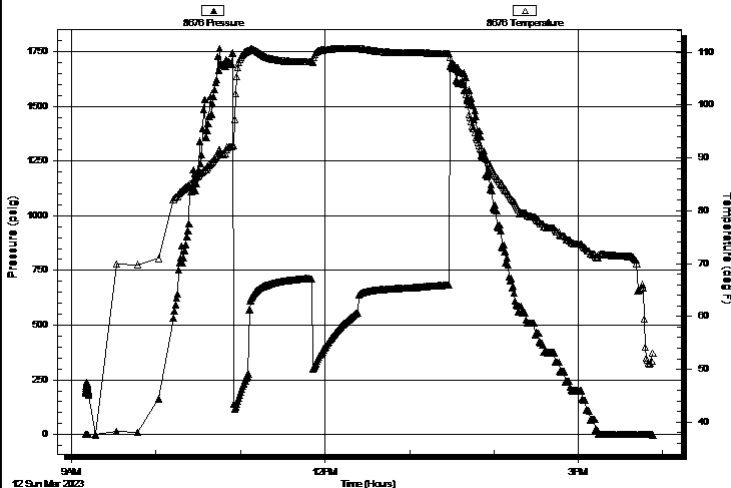
Last Calib.: 2023.03.12

Time On Btm:

Time Off Btm:

**TEST COMMENT:** 5:IF- Strong surface blow , BOB in 1 min, final is 56 1/2"  
45:IS- Weak surface blow , built to 1/4" then died @ 25min, blow came back @ 36 min, final is 1/4"  
30:FF- Strong surface blow , BOB in 2 min, final is 76 1/2"  
60:FS- Weak surface blow in 13 min, built to 1/2" in 20 min, final is 1/2"

Pressure vs. Time



### PRESSURE SUMMARY

Time (Min.)	Pressure (psig)	Temp (deg F)	Annotation
-------------	-----------------	--------------	------------

### Recovery

Length (ft)	Description	Volume (bbl)
62.00	MW 90%W 10%M	0.30
1233.00	SGOMCW 55%W 26%M 14%O 5%G	17.30

### Gas Rates

	Choke (inches)	Pressure (psig)	Gas Rate (Mcf/d)
--	----------------	-----------------	------------------

\* Recovery from multiple tests



**TRILOBITE**  
**TESTING, INC.**

## DRILL STEM TEST REPORT

**TOOL DIAGRAM**

Jason Oil Co LLC

**30-6s-21w Graham,KS**

PO Box 701  
Russell, KS 67665

**Hart-Billips #2**

Job Ticket: 69688

**DST#: 2**

ATTN: Randy Killian

Test Start: 2023.03.12 @ 09:10:00

### Tool Information

Drill Pipe:	Length: 3473.00 ft	Diameter: 3.80 inches	Volume: 48.72 bbl	Tool Weight:	25000.00 lb
Heavy Wt. Pipe:	Length: ft	Diameter: inches	Volume: - bbl	Weight set on Packer:	25000.00 lb
Drill Collar:	Length: 62.00 ft	Diameter: 2.25 inches	Volume: 0.30 bbl	Weight to Pull Loose:	62000.00 lb
		Total Volume:	- bbl	Tool Chased	ft
Drill Pipe Above KB:	23.00 ft			String Weight: Initial	58000.00 lb
Depth to Top Packer:	3545.00 ft			Final	64000.00 lb
Depth to Bottom Packer:	ft				
Interval between Packers:	25.00 ft				
Tool Length:	58.00 ft				
Number of Packers:	2	Diameter:	6.75 inches		
Tool Comments:					

Tool Description	Length (ft)	Serial No.	Position	Depth (ft)	Accum. Lengths
------------------	-------------	------------	----------	------------	----------------

Change Over Sub	1.00			3513.00	
Shut In Tool	5.00			3518.00	
Hydraulic tool	5.00			3523.00	
Jars	5.00			3528.00	
EM Tool	4.00			3532.00	
Safety Joint	3.00			3535.00	
Packer	5.00			3540.00	33.00 Bottom Of Top Packer
Packer	5.00			3545.00	
Stubb	1.00			3546.00	
Recorder	0.00	8353	Inside	3546.00	
Recorder	0.00	8676	Outside	3546.00	
Perforations	21.00			3567.00	
Bullnose	3.00			3570.00	25.00 Bottom Packers & Anchor

**Total Tool Length: 58.00**



**TRILOBITE**  
**TESTING, INC.**

## DRILL STEM TEST REPORT

### FLUID SUMMARY

Jason Oil Co LLC

**30-6s-21w Graham,KS**

PO Box 701  
Russell, KS 67665

**Hart-Billips #2**

Job Ticket: 69688

**DST#: 2**

ATTN: Randy Killian

Test Start: 2023.03.12 @ 09:10:00

### Mud and Cushion Information

Mud Type: Gel Chem

Mud Weight: 9.00 lb/gal

Viscosity: 63.00 sec/qt

Water Loss: 7.98 in<sup>3</sup>

Resistivity: 0.23 ohm.m

Salinity: 1000.00 ppm

Filter Cake: 2.00 inches

Cushion Type:

Cushion Length:

Cushion Volume:

Gas Cushion Type:

Gas Cushion Pressure:

ft

bbl

psig

Oil API:

Water Salinity: 50000 ppm

deg API

### Recovery Information

Recovery Table

Length ft	Description	Volume bbl
62.00	MW 90%W 10%M	0.305
1233.00	SGOMCW 55%W 26%M 14%O 5%G	17.296

Total Length: 1295.00 ft      Total Volume: 17.601 bbl

Num Fluid Samples: 0

Num Gas Bombs: 0

Serial #:

Laboratory Name:

Laboratory Location:

Recovery Comments: .226 @ 50 deg = 50,000 ppm

Serial #: 8353

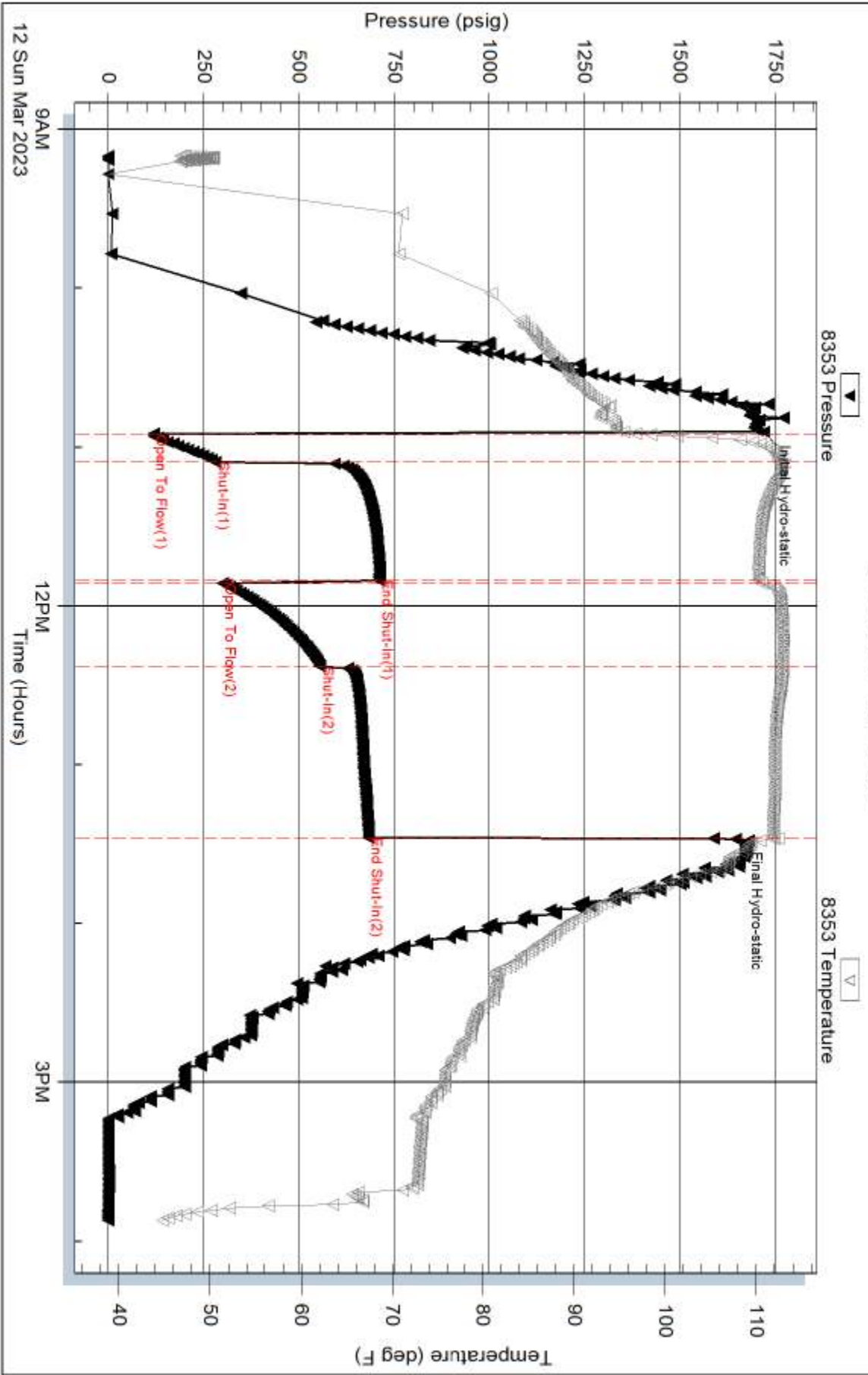
Inside

Jason Oil Co LLC

Hart-Billips #2

DST Test Number: 2

# Pressure vs. Time



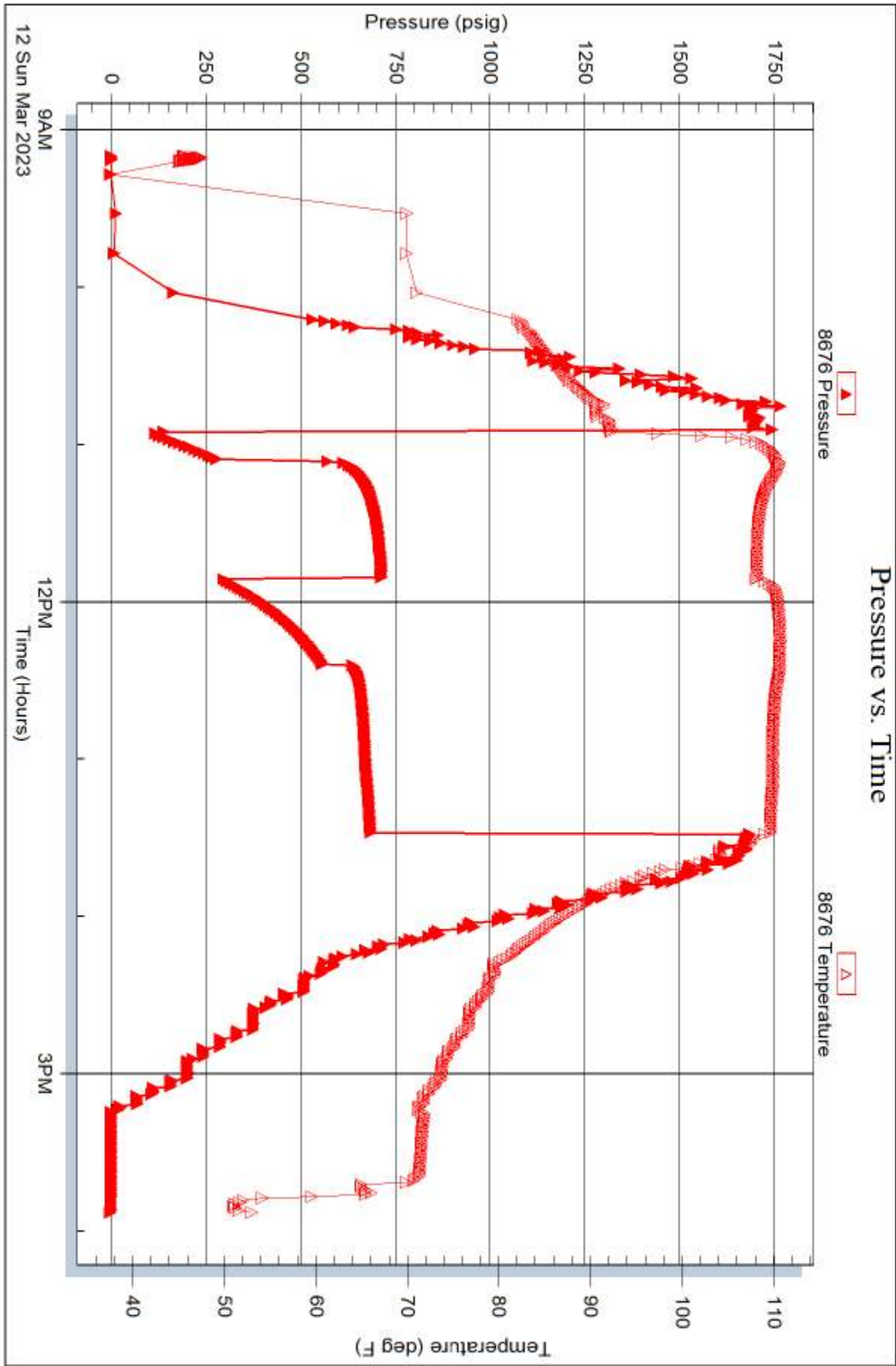


Serial #: 8676

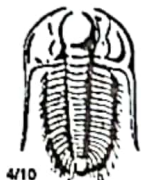
Outside Jason Oil Co LLC

Hart-Billips #2

DST Test Number: 2







# TRILOBITE TESTING INC.

1515 Commerce Parkway • Hays, Kansas 67601

## Test Ticket

NO. 69687

Well Name & No. Hart-Billips #2 Test No. 1 Date 03/11/23  
Company Jason Oil Co. LLC Elevation 2250 KB 2242 GL  
Address 3718 183 Rd St, P.O. Box 701 Russell, KS 67665  
Co. Rep / Geo. Randy Killian Rig Discovery #4  
Location: Sec. 30 Twp 6S Rge. 21W Co. Graham State KS

Interval Tested 3450-3510 Zone Tested Toronto, LKC A  
Anchor Length 60 Drill Pipe Run 3376 Mud Wt. 9.1  
Top Packer Depth 3445 Drill Collars Run 62 Vis 76  
Bottom Packer Depth 3510 3450 Wt. Pipe Run 8 WL 8  
Total Depth 3510 Chlorides 600 ppm System LCM 4#

Blow Description IF Fair Surface blow, BOB in 3min, Final is 19 3/4"

ISF - No blow back

FF - Fair surface blow, BOB in 3min, Final is 70 1/4"

FSI - No blow back

Rec <u>62</u>	Feet of <u>MW</u>	%gas	%oil <u>85</u>	%water <u>15</u>	%mud
Rec <u>756</u>	Feet of <u>SOMCW</u>	%gas <u>5</u>	%oil <u>65</u>	%water <u>30</u>	%mud
Rec	Feet of	%gas	%oil	%water	%mud
Rec	Feet of	%gas	%oil	%water	%mud
Rec	Feet of	%gas	%oil	%water	%mud

Rec Total 818' BHT 108' Gravity — API RW .165 @ 46 °F Chlorides 70,000 ppm

- (A) Initial Hydrostatic 1662  
(B) First Initial Flow 50  
(C) First Final Flow 115  
(D) Initial Shut-In 833  
(E) Second Initial Flow 121  
(F) Second Final Flow 403  
(G) Final Shut-In 791  
(H) Final Hydrostatic 1585

- ☒ Test 1800  
☒ Jars 300  
☒ Safety Joint  
☐ Circ Sub  
☐ Hourly Standby  
☒ Mileage 140 RT  
☐ Sampler 70mi 122.50 12mi 21  
☐ Straddle  
☐ Shale Packer  
☐ Extra Packer  
☐ Extra Recorder  
☐ Day Standby  
☐ Accessibility  
Sub Total 2243.50

- T-On Location 13:45  
T-Started 14:45  
T-Open 16:31  
T-Pulled 19:35  
T-Out 21:30  
Comments  
☒ EM Tool  
☐ Ruined Shale Packer  
☐ Ruined Packer  
☐ Extra Copies  
Sub Total 0  
Total 2243.50  
MP/DST Disc't

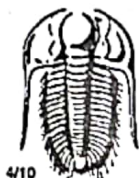
Initial Open 5  
Initial Shut-In 60  
Final Flow 45  
Final Shut-In 60

Approved By

Our Representative

Trilobite Testing Inc. shall not be liable for damaged of any kind of the property or personnel of the one for whom a test is made, or for any loss suffered or sustained, directly or indirectly, through the use of its equipment, or its statements or opinion concerning the results of any test, tools lost or damaged in the hole shall be paid for at cost by the party for whom the test is made.





# TRILOBITE TESTING INC.

1515 Commerce Parkway • Hays, Kansas 67601

## Test Ticket

NO. 69688

Well Name & No. Hart-Billips #2 Test No. 2 Date 03/12/23  
 Company Jason Oil Company LLC Elevation 2250 KB 2242 GL  
 Address 3718 183 Rd St, P.O. Box 701, Russell, KS 67665  
 Co. Rep / Geo. Randy Kilian Rig Discovery #4  
 Location: Sec. 30 Twp 6S Rge. 21W Co. Graham State KS

Interval Tested 3545-3570 Zone Tested LKC E-F  
 Anchor Length 25 Drill Pipe Run 3473 Mud Wt. 9.2  
 Top Packer Depth 3540 Drill Collars Run 62 Vis 63  
 Bottom Packer Depth 3545 Wt. Pipe Run 8 WL 8  
 Total Depth 3570 Chlorides 1000 ppm System LCM 4#

Blow Description IF-Strong surface blow, BOB in 1min, Final is 56 1/2"  
ISF-Weak surface blow, built to 1/4" then diesel @ 25min, blow came back @ 36min  
FF-Strong surface blow, BOB in 2min, Final 76 1/2" (Final is 1/4"  
FSF-Weak surface blow in 13min, built to 1/2" in 20 min, Final is 1/2"

Rec	Feet of	MW	%gas	%oil	%water	%mud
Rec <u>62</u>	Feet of <u>MW</u>				<u>90%</u>	<u>10%</u>
Rec <u>1233</u>	Feet of <u>5540 MCW</u>		<u>5%</u>	<u>14%</u>	<u>55%</u>	<u>26%</u>
Rec	Feet of		%gas	%oil	%water	%mud
Rec	Feet of		%gas	%oil	%water	%mud
Rec	Feet of		%gas	%oil	%water	%mud

Rec Total 1295' BHT 111° Gravity 1950 API RW 226 @ 50° F Chlorides 50,000 ppm

(A) Initial Hydrostatic <u>1719</u>	<input checked="" type="checkbox"/> Test	1950	T-On Location <u>08:30</u>
(B) First Initial Flow <u>118</u>	<input checked="" type="checkbox"/> Jars	300	T-Started <u>09:10</u>
(C) First Final Flow <u>280</u>	<input checked="" type="checkbox"/> Safety Joint		T-Open <u>10:55</u>
(D) Initial Shut-In <u>711</u>	<input type="checkbox"/> Circ Sub		T-Pulled <u>13:30</u>
(E) Second Initial Flow <u>299</u>	<input type="checkbox"/> Hourly Standby		T-Out <u>15:45</u>
(F) Second Final Flow <u>554</u>	<input checked="" type="checkbox"/> Mileage <u>24 RT</u> 42		Comments <u>Picked up tools @</u>
(G) Final Shut-In <u>683</u>	<input type="checkbox"/> Sampler	70mi 122.50 12mi 21	<u>10:40 on 03/13/23</u>
(H) Final Hydrostatic	<input type="checkbox"/> Straddle		

Initial Open <u>5</u>	<input type="checkbox"/> Shale Packer	<input checked="" type="checkbox"/> EM Tool
Initial Shut-In <u>60 45</u>	<input type="checkbox"/> Extra Packer	<input type="checkbox"/> Ruined Shale Packer
Final Flow <u>45 30</u>	<input type="checkbox"/> Extra Recorder	<input type="checkbox"/> Ruined Packer
Final Shut-In <u>60</u>	<input type="checkbox"/> Day Standby	<input type="checkbox"/> Extra Copies
	<input type="checkbox"/> Accessibility	Sub Total <u>0</u>
	Sub Total <u>2285.50</u>	Total <u>2285.50</u>

Approved By \_\_\_\_\_ Our Representative [Signature]

Trilobite Testing Inc. shall not be liable for damaged of any kind of the property or personnel of the one for whom a test is made, or for any loss suffered or sustained, directly or indirectly, through the use of its equipment, or its statements or opinion concerning the results of any test, tools lost or damaged in the hole shall be paid for at cost by the party for whom the test is made.