

KANSAS CORPORATION COMMISSION
OIL & GAS CONSERVATION DIVISION

TEMPORARY ABANDONMENT WELL APPLICATION

OPERATOR: License#
Name:
Address 1:
Address 2:
City: State: Zip:
Contact Person:
Phone:
Contact Person Email:
Field Contact Person:
Field Contact Person Phone:

API No. 15-
Spot Description:
Sec. Twp. S. R.
feet from N / S Line of Section
feet from E / W Line of Section
GPS Location: Lat: , Long:
Datum: NAD27 NAD83 WGS84
County: Elevation: GL KB
Lease Name: Well #:
Well Type: Oil Gas OG WSW Other:
SWD Permit #: ENHR Permit #:
Gas Storage Permit #:
Spud Date: Date Shut-In:

Table with 7 columns: Conductor, Surface, Production, Intermediate, Liner, Tubing. Rows include Size, Setting Depth, Amount of Cement, Top of Cement, Bottom of Cement.

Casing Fluid Level from Surface: How Determined? Date:
Casing Squeeze(s): to w / sacks of cement, to w / sacks of cement. Date:
Do you have a valid Oil & Gas Lease? Yes No
Depth and Type: Junk in Hole at Tools in Hole at Casing Leaks: Yes No Depth of casing leak(s):
Type Completion: ALT. I ALT. II Depth of: DV Tool: w / sacks of cement Port Collar: w / sack of cement
Packer Type: Size: Inch Set at: Feet
Total Depth: Plug Back Depth: Plug Back Method:

Geological Data:

Table with 4 columns: Formation Name, Formation Top, Formation Base, Completion Information. Rows 1 and 2.

UNDER PENALTY OF PERJURY I HEREBY ATTEST THAT THE INFORMATION CONTAINED HEREIN IS TRUE AND CORRECT TO THE BEST OF MY KNOWLEDGE

Submitted Electronically

Form with fields: Do NOT Write in This Space - KCC USE ONLY, Date Tested, Results, Date Plugged, Date Repaired, Date Put Back in Service, Review Completed by, Comments, TA Approved: Yes Denied, Date.

Mail to the Appropriate KCC Conservation Office:

Table with 3 columns: District Office #, Address, Phone. Rows 1-4.

**General**

Well ID Carothers 3206 2-34H FL 2  
 Well Carothers 3206 2-34H FL 2  
 Company SD  
 Operator Andrew Smith  
 Lease Name Carothers 3206 2-34H FL 2  
 Elevation 0.00 ft  
 Production Method Electrical Submersible Pump

Comment

**Tubulars**

Tubing OD 3.500 in  
 Average Joint Length 32.487 ft  
 Sliding Sleeve - \* - ft  
 Casing OD 7.000 in  
 Liner OD - \* - in  
 Top of Liner - \* - ft  
 PBTD - \* - ft  
 Kelly Bushing 18.00 ft

**Pump Assembly**

Installation Date - \* -  
 Pump Intake Depth 4938.00 ft  
 PIP Gage - \* - ft

**Gas Separator**

Gas Separator Not Used  
 Tubing Discharge Temp - \* - deg F

**Pump Configuration**

	Top Pump	Pump 2	Pump 3	Pump 4	Pump 5
Pump Manufacturer	- * -	- * -	- * -	- * -	- * -
Pump Description/Series	- * -	- * -	- * -	- * -	- * -
Serial Number	- * -	- * -	- * -	- * -	- * -
Stage Count	0	0	0	0	0
Pump Housing	- * -	- * -	- * -	- * -	- * -

Total Length of Pump Assembly - \* - ft  
 Shroud is Not Used

**Electric Equipment**

Control Panel - \* -  
 Variable Frequency is Not Used  
 Overload Set Point - \* -  
 Underload Set Point - \* -  
 Overvoltage Set Point - \* -  
 Undervoltage Set Point - \* -  
 Frequency - \* -  
 Pump Up Time - \* -

**Cable Data**

Round Cable Type - \* -  
 Round Cable Length - \* - ft  
 Flat Cable Type - \* -  
 Flat Cable Length - \* - ft

**Electrical Cost**

Cost Per kW-Hour - \* -  
 Cost Per kW - \* -

**Motor Assembly Description**

	Top Motor	Motor 2	Motor 3	Motor 4
Manufacturer	- * -	- * -	- * -	- * -
Series	- * -	- * -	- * -	- * -
Type	- * -	- * -	- * -	- * -
HP	- * -	- * -	- * -	- * -
Volts/Amps	- * -	- * -	- * -	- * -
Total Length of Motor Assembly	- * - ft		Installation Date	- * -

**Electrical Parameters**

AMPS		VOLTS	
A Input	- * -	BA Input	- * -
B Input	- * -	CB Input	- * -
C Input	- * -	AC Input	- * -
		A-gnd	- * -
		B-gnd	- * -
		C-gnd	- * -
Kilowatt	- * -	Power Factor	- * -
		Date and Time of Measurement	- * -

**Conditions**

**Pressure**

Static BHP 726.9 psi (g)  
 Static BHP Method Acoustic  
 Static BHP Date 05/15/2024  
 Producing BHP 595.3 psi (g)  
 Producing BHP Method Acoustic  
 Producing BHP Date 06/09/2025  
 Formation Depth 4938.00 ft

**Production**

Oil Production - \* - BBL/D  
 Water Production - \* - BBL/D  
 Gas Production - \* - Mscf/D  
 Production Date - \* -

**Temperatures**

Surface Temperature 70 deg F  
 Bottomhole Temperature 150 deg F

**Surface Producing Pressures**

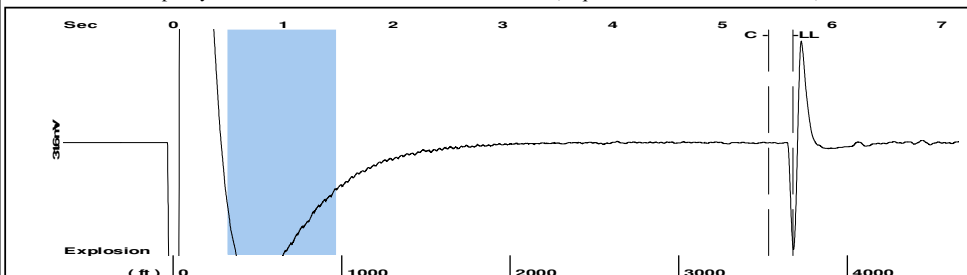
Tubing Pressure - \* - psi (g)  
 Casing Pressure 350.1 psi (g)

**Fluid Properties**

Oil API 40 deg API  
 Water Specific Gravity 1.05 Sp.Gr.H2O

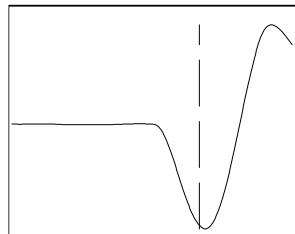
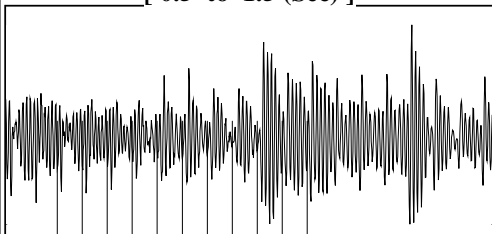
**Casing Pressure Buildup**

Change in Pressure 0.1 psi  
 Over Change in Time 1.00 min

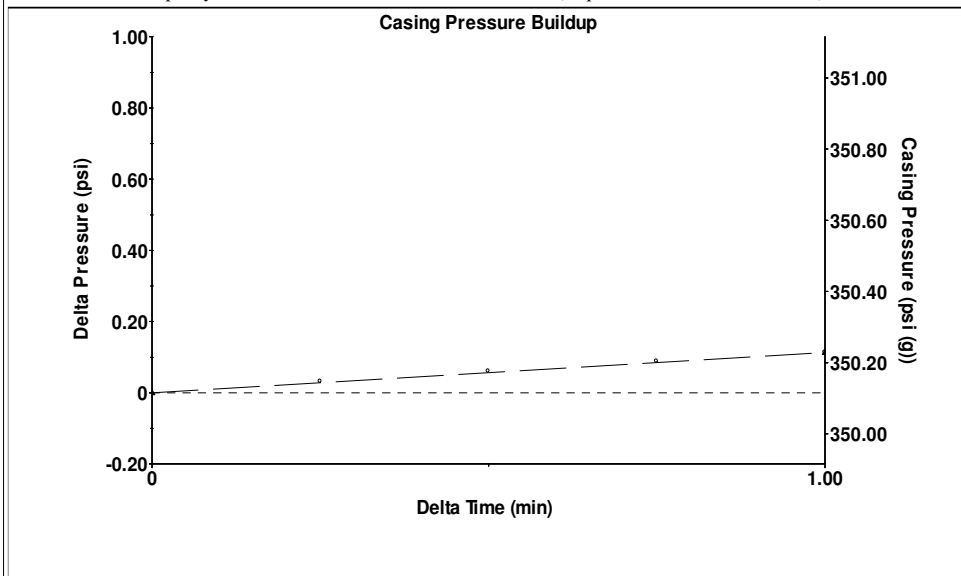


Filter Type High Pass Automatic Collar Count Yes Time 5.644 sec  
 Manual Acoustic Veloc 1266.55 ft/s Manual JTS/sec 19.4932 Joints 113.194 Jts  
 Depth 3677.33 ft

[ 0.5 to 1.5 (Sec) ]

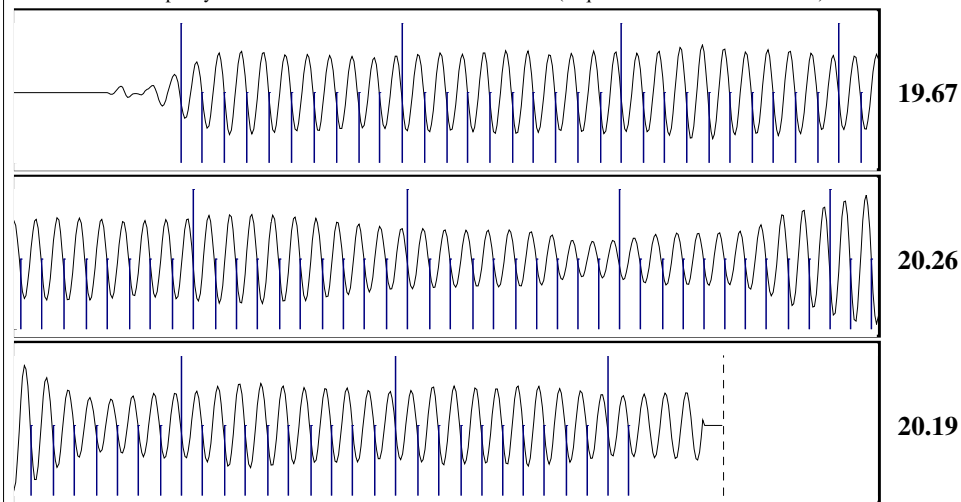


**Analysis Method: Automatic**



Change in Pressure 0.11 psi PT 15571  
 Change in Time 1.00 min Range 0 - ? psi

<b>Production</b>	<b>Potential</b>	<b>Casing Pressure</b>		<b>Static</b>
Current		350.1 psi (g)		<b>Oil Column Height</b>
Oil - *-	- *- BBL/D	<b>Casing Pressure Buildup</b>		MD 0 ft
Water - *-	- *- BBL/D	0.1 psi		TVD 0 ft
Gas - *-	- *- Mscf/D	1.00 min		<b>Water Column Height</b>
<b>IPR Method</b>	<b>Vogel</b>	<b>Gas/Liquid Interface Pressure</b>		MD 1243 ft
PBHP/SBHP	- *-	383.0 psi (g)		TVD 756 ft
<b>Production Efficiency</b>	0.0	<b>Liquid Level Depth</b>		<b>Static BHP</b>
Oil 40 deg.API		3677.33 ft		726.9 psi (g)
Water 1.05 Sp.Gr.H2O		Main Depth to Liq Level TVD		
Gas 0.67 Sp.Gr.AIR		3645.06 ft		
<b>Acoustic Velocity</b>	1303.09 ft/s	<b>Pump Intake Depth</b>		
		4938.00 ft		
		<b>Formation Depth</b>		
		4938.00 ft		
		<b>Formation Depth TVD</b>		
		4418.81 ft		



Acoustic Velocity 1303.09 ft/s Joints counted 101  
 Joints Per Second 20.0556 jts/sec Joints to liquid level 113.194  
 Depth to liquid level 3677.33 ft Filter Width 17.4932 21.4932  
 Automatic Collar Count Yes Time to 1st Collar 0.388 5.424

Conservation Division  
District Office No. 2  
3450 N. Rock Road  
Building 600, Suite 601  
Wichita, KS 67226



Phone: 316-337-7400  
<http://kcc.ks.gov/>

Andrew J. French, Chairperson  
Dwight D. Keen, Commissioner  
Annie Kuether, Commissioner

Laura Kelly, Governor

06/18/2025

Leah Medrana  
SandRidge Exploration and Production LLC  
1 E SHERIDAN AVE STE 500  
OKLAHOMA CITY, OK 73104-2494

Re: Temporary Abandonment  
API 15-077-22100-03-00  
CAROTHERS 3206 2-34H 1L ST  
NE/4 Sec.03-33S-06W  
Harper County, Kansas

Dear Leah Medrana:

"Your temporary abandonment (TA) application for the well listed above has been approved. In accordance with K.A.R. 82-3-111 the TA status of this well will expire 06/18/2026.

- \* If you return this well to service or plug it, please notify the District Office.
- \* If you sell this well you are required to file a Transfer of Operator form, T-1.
- \* If the well will remain temporarily abandoned, you must submit a new TA application, CP-111, before 06/18/2026.

You may contact me at the number above if you have questions.

Very truly yours,

Neil Lake, ECRS"