

Form	ACO1 - Well Completion
Operator	Griffin, Charles N.
Well Name	TAYCEN #3
Doc ID	1720934

Tops

Name	Top	Datum
Heebner Shale	3793	-1925
Brown Lime	3971	-2103
Lansing	3994	-2126
Stark	4298	-2430
B/KC	4384	-2516
Cherokee	4484	-2616
Viola	4530	-2662
Simpson Shale	4653	-2785

Form	ACO1 - Well Completion
Operator	Griffin, Charles N.
Well Name	TAYCEN #3
Doc ID	1720934

Casing

Purpose Of String	Size Hole Drilled	Size Casing Set	Weight	Setting Depth	Type Of Cement	Number of Sacks Used	Type and Percent Additives
Surface	12.25	8.625	23	260	common	175	2%Gel 3%CC
Production	7.875	5.5	15.5	4745	Pro C	145	10% Salt 2% Gel 5# Koseal

Griffin Management, LLC

Taycen #3

4/4/23

Started running casing at 3:00 am

Run 103 jts 5 ½" 27# (4368') & 10 jts 5 ½" 15.5# (378.91'). Total 4746.91. Landed casing at 4745'. PBTD 4735'. Circulated 50 mins. QUALITY cemented with 145 sks Pro C cement with 10% salt, 2% gel and 5# Koseal. Plug down at 7:30 am. Plugged rathole with 30 sks. Released drilling rig.

04/10/2023

Pull cellar box clean up location. Weld on 5.5" slip collar. MIRU CCOS Rig #3. Casing swab down to 1500' Unnload tubing. SD

04/11/2023

RU Log tech to run CBL/GR
Cement bond is good.
LTD-4681'
TOC-3000'

Perfs-4510-4520' 3spf

TIH W/ Tubing Tally in hole.

2-7/8" Bull plug 1jt 2-7/8"

4'x 2-7/8' perforated sub set at 4492'

SN

143x2-7/8" tubing at 4487'

Land tubing. Pack off head RU swab.

INFL-1200' FFL-4350' Swab down 65 bbls

Show of oil show of gas. Shut in well SD

04/12/2023

SITP-100 psi SICP- 120 psi

Blow down to tank rig up swab

FL-3750' 700' free oil 50' oily water 91% oil cut

TOOH w/ tubing TIH w/5.5 Arrow set packer and tubing

RU Tiger chemical drop spot 2 bbls acid set packer at

4411'. Load tubing treat well with 1000 gallons 7.5% with sand additives total load 52.1 bbls.

Breakdown- 1800 psi

Treat- 2.4 BPM at 1250 psi

ISIP-1100 psi

5 min-650 psi

10 min-300 psi

15 min- light vacuum

RU swab

INFL- 50' FFL-4350' Show oil show gas swab down 27.4 bbls

2 runs/hr-160'-180' fluid 2%-5% oil rec 2.2 bbls

2 runs/hr-160-190' fluid 42%-77% oil rec 2.2 bbls

Shut in well SD

04/13/2023

SITP-125 psi

FL- 2750' REC 1100' 100% oil

2- FL 3700' Rec 700' 100% oil

3- Rec 250' 20% oil

4- Rec 160' 25% oil

5- Dry run bad cup

Swab down 8 bbls

2 runs/hour- 250'-100' 43%-50% oil Rec 1.1 bbls

2 runs/ hour NF- 320' 70% oil

Shut in well shut down

04/14/2023

SITP 210 psi

1-FL 2600' Rec 1200' 100%OIL

2-FL 3500' Rec 850' 100% oil

3- PF SN Rec 200' 100% oil

RU Tiger chemical to treat W/ 750 Gls 7.5% Cherokee
blend acid and 25,000 scf N2

Max Rate 10 bpm

Max pressure 2300 psi

Load 24 bbls

ISIP- 1900 psi

5min-1550 psi

10 min- 1400 psi

15 min- 1300 psi

RD Tiger Chemical Rig up to flow back

SI- 1200 psi

Blow back to swab tank Blew down to light blow in 30
minutes flowed back 18 bbls. RU Swabbed Rec 50- 100'
per swab run 2000' of heavy spray before solid fluid hits
surface 50-87% oil cut Rec 12 bbls Shut in well shut
down. TFR 30 bbls flowed and swabbed back.

04/17/2023

SITP- 300 psi

1-FL 1200' Rec 1100' 100% oil

2-FL 2100' Rec 1250' 100% oil

3-FL 2950' Rec 1000' 100% oil

4-FL 3750' Rec 700' 63% oil Down 12.5 bbls

3 runs/hour 150'-60'-90' 50%-61%-68% oil Rec 2bbls
SD For night

04/18/2023

SITP- 260 psi
FL-2600' 100% oil Swab down 7.5bbls all oil
RD Move off.

04/21/2023

MIRU Gore N2 to frac down tubing. W/
553 bbl Slickwater
32,655 lbs 20/40 sand
1,067,000 N2
14.9 Bpm Avg rate
18.6 Bpm Max rate
3217 psi Avg Pressure
4215 psi Max pressure
4135 ISIP
5 min 3445 psi
10 min 3090 psi
15 min 2920 psi
30 min 2553 psi
Load 553 bbls
Frac Screened out!

Opened to flow back
2200 psi on 12/64" choke to clear sand.

04/22/2023

Total Fluid recovered 425 bbls over 40 hours 4-38% oil.

04/25/2023

MIRU CCOS Rig #1 Release packer run in tag sand at
4580' TOOH w/ tubing and packer. TIH w/production
tubing. Land end of MA 4442' Run pump and rods.

141x2-7/8" -4427' Jt AVG 31.31

SN

2-7/8"x15' MA 4442'

2-1/2"x2x18 RWBC SV

2'x 7/8" on Pump W/back off tool

4x1-1/2" Sinker bars

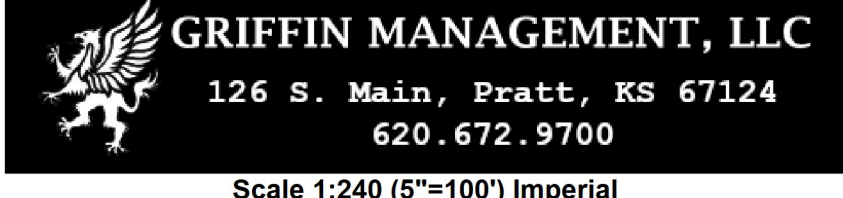
171x7/8" rods.

4'-8'x7/8" pony

26'x1-1/4"PR 14'x1-1/2" HF liner

RD Move off location Set 320 pumping unit.

Pumping to frac tank overnight.



126 S. Main, Pratt, KS 67124
620.672.9700

Scale 1:240 (5"=100') Imperial
Measured Depth Log

Well Name: Taycen #3
API: 15-007-24464
Location: T30S R15W Sec 15
License Number: 33936
Spud Date: 12/6/2022
Surface Coordinates: 1020' FSL & 840' FWL
Region: Barber County, KS
Drilling Completed: 12/11/2022
Bottom Hole Coordinates: Vertical Wellbore
Ground Elevation (ft): 1863' K.B. Elevation (ft): 1868'
Logged Interval (ft): 3800' To: 4750' Total Depth (ft): 4750'
Formation: Ordovician (Simpson) @ RTD
Type of Drilling Fluid: Mud-Co. Chemical Drispac - Displaced @ 2939-71' w/ 700 bbls
Printed by MudLog from WellSight Systems 1-800-447-1534 www.WellSight.com

OPERATOR

Company: Griffin Management, LLC
Address: 126 S. Main
Pratt, KS 67124

GEOLOGIST

Name: Eli J. Felts
Company: Griffin Management, LLC
Address: 126 S. Main
Pratt, KS 67124

Drilling Report

3/29/2023
MIRU: Spud 2:15PM

3/30/2023
WOC Surface @ 260'

3/31/2023
Drilling @ 736'

4/1/2023
Drilling @ 2700'

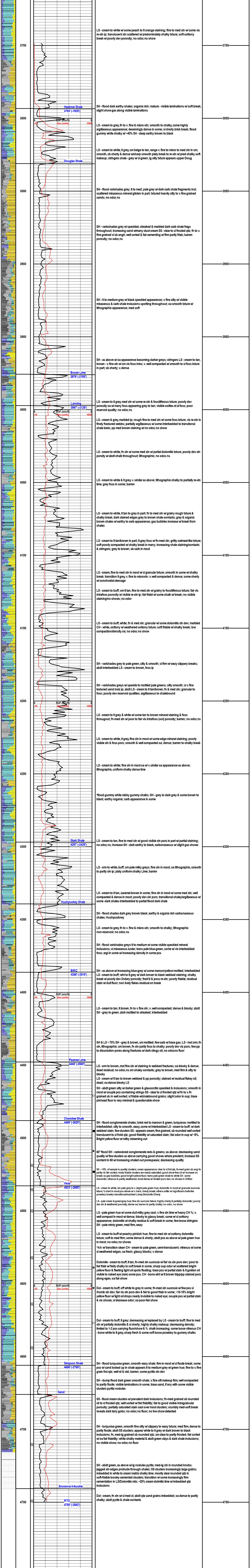
4/2/2023
Drilling @ 4044'

4/3/2023
RTD @ 5:30 AM
Short Trip @ 4710'

4/4/2023
Plug Down @ 4745'
Release Rig @ 11:30 AM

Pipe Setting

8.625" Surface Casing Set @ 260' w/175 sxs. Common
5.5" Production Set @ 4745' w/ 145 sxs. Pro C



QUALITY WELL SERVICE, INC.

8268

Federal Tax I.D. # 481187368

Home Office 30060 N. Hwy 281, Pratt, KS 67124

Mailing Address P.O. Box 468

Office 620-786-6992

Fax 620-672-3663

Todd's Cell 620-388-4967

Brady's Cell 620-727-6964

Date	3-22-23	Sec.	15	Twp.	30S	Range	15W	County	Barber	State	Ks	On Location	Finish
Lease	TAYLOR		Well No.		3		Location						
Contractor	Mudlin Drilling Co #104							Owner					
Type Job	SURFACE							To Quality Well Service, Inc. You are hereby requested to rent cementing equipment and furnish cement and helper to assist owner or contractor to do work as listed.					
Hole Size	12 1/4		T.D.		260'		Charge To						
Csg.	85/2		Depth		260'		Griffin						
Tbg. Size			Depth				Street						
Tool			Depth				City State						
Cement Left in Csg.			Shoe Joint		20		The above was done to satisfaction and supervision of owner agent or contractor.						
Meas Line			Displace		15.3		Cement Amount Ordered 26200 Common						
EQUIPMENT								21 CEL 3 1/2 1/2'PS USED 1754					
Pumptrk	8	No.					Common 1754						
Bulktrk	15	No.					Poz. Mix						
Bulktrk		No.					Gel. 329 lbs						
Pickup		No.					Calcium 494 lbs						
JOB SERVICES & REMARKS								Hulls					
Rat Hole								Salt					
Mouse Hole								Flowseal 37.5 lbs					
Centralizers								Kol-Seal					
Baskets								Mud CLR 48					
D/V or Port Collar								CFL-117 or CD110 CAF 38					
Run last 23" B-3 23" CSE SET d 260								Sand					
START CSE CSE on Bottom								Handling 183					
Hook up CSE back CSE with								Mileage 251 4700					
START PUMPING H2O								FLOAT EQUIPMENT					
START MIX & Pump 1754 Common								Guide Shoe					
21 CEL 3 1/2 1/2'PS d 14.3 1/2' CSE								Centralizer					
START DISC								Baskets					
PICK DOWN								AFU Inserts					
CLOSE VALVE ON CSE 150'								Float Shoe					
LIFT CSE + 200' JDS								Latch Down					
CSE OUT TO PER								SERVICE SP 1EA					
								LAW 25					
THANK YOU								Pumptrk Charge SURFACE					
PLEASE CALL AGAIN								Mileage 50					
TOTAL BEYOND DATE													
Signature								Tax					
								Discount					
								Total Charge					

QUALITY WELL SERVICE, INC.

8274

Federal Tax I.D. # 481187368

Home Office 30060 N. Hwy 281, Pratt, KS 67124

Mailing Address P.O. Box 468

Office 620-786-6992

Fax 620-672-3663

Todd's Cell 620-388-4967

Brady's Cell 620-727-6964

Date	4-4-23	Sec.	15	Twp.	30	Range	15	County	Barber	State	KS	On Location		Finish	7:30
Lease	Tayron		Well No.		3		Location								
Contractor	Murfin							Owner							
Type Job	5.5 LS							To Quality Well Service, Inc. You are hereby requested to rent cementing equipment and furnish cement and helper to assist owner or contractor to do work as listed.							
Hole Size	7 7/8		T.D.		4746		Charge To								
Csg. 5.5	103 1/2 17*		Depth		4746		Griffin								
Tbg. Size	10 1/2 15.5		Depth				Street								
Tool			Depth				City								
Cement Left in Csg.			Shoe Joint		9.56		State								
Meas Line			Displace		110.3		The above was done to satisfaction and supervision of owner agent or contractor.								
EQUIPMENT							Cement Amount Ordered 175cy Pro C 2% 601								
Pumptrk	8 No.						102 5/8 5" Kolseal 6% C16A 25% C41P 25% PS								
Bulktrk	10 No.						Common 175								
Bulktrk	No.						Poz. Mix								
Pickup	No.						Gel. 394								
JOB SERVICES & REMARKS							Calcium								
Rat Hole							Hulls								
Mouse Hole							Salt 964								
Centralizers 1-2-3-4-5-6-7							Flowseal 44								
Baskets							Kol-Seal 875								
D/V or Port Collar							Mud CLR 48 500 gal								
Ran 12.3 gals 5.5 csg. tag							CFL-117 or CD110-GAF-38 C16A 99"								
Break cir. w/ rig pumped 10 bbls H2O							Sand. CC-1 9601 C41P 41"								
12 bbls Mud Flush 10 bbls H2O							Handling 217								
Pumped 30 sec rat hole Pumped 145 sec							Mileage 25								
Pro & Shut down washed up released							FLOAT EQUIPMENT								
plug Displaced with 110.3 bbls K/L							Guide-Shoe H-M 1EA								
water. Lift pressure 500# @ 95 bbls							Centralizer 1100								
Plug down 1500 psi plug held.							Baskets 1200								
							AFJ Inserts								
							Float Shoe								
							Latch Down 1EA								
							Service Supervisor								
							LMV 25								
							Pumptrk Charge 25								
							Mileage 50								
David Bryan Nate							Tax								
							Discount								
X Signature							Total Charge								