

KANSAS CORPORATION COMMISSION
OIL & GAS CONSERVATION DIVISION

TEMPORARY ABANDONMENT WELL APPLICATION

OPERATOR: License#
Name:
Address 1:
Address 2:
City: State: Zip:
Contact Person:
Phone:
Contact Person Email:
Field Contact Person:
Field Contact Person Phone:

API No. 15-
Spot Description:
Sec. Twp. S. R.
feet from N / S Line of Section
feet from E / W Line of Section
GPS Location: Lat: , Long:
Datum: NAD27 NAD83 WGS84
County: Elevation: GL KB
Lease Name: Well #:
Well Type: (check one) Oil Gas OG WSW Other:
SWD Permit #: ENHR Permit #:
Gas Storage Permit #:
Spud Date: Date Shut-In:

Table with 7 columns: Conductor, Surface, Production, Intermediate, Liner, Tubing. Rows include Size, Setting Depth, Amount of Cement, Top of Cement, Bottom of Cement.

Casing Fluid Level from Surface: How Determined? Date:
Casing Squeeze(s): to w / sacks of cement, to w / sacks of cement. Date:
Do you have a valid Oil & Gas Lease? Yes No
Depth and Type: Junk in Hole at Tools in Hole at Casing Leaks: Yes No Depth of casing leak(s):
Type Completion: ALT. I ALT. II Depth of: DV Tool: w / sacks of cement Port Collar: w / sack of cement
Packer Type: Size: Inch Set at: Feet
Total Depth: Plug Back Depth: Plug Back Method:

Geological Data:

Table with 4 columns: Formation Name, Formation Top, Formation Base, Completion Information. Rows 1 and 2.

UNDER PENALTY OF PERJURY I HEREBY ATTEST THAT THE INFORMATION CONTAINED HEREIN IS TRUE AND CORRECT TO THE BEST OF MY KNOWLEDGE

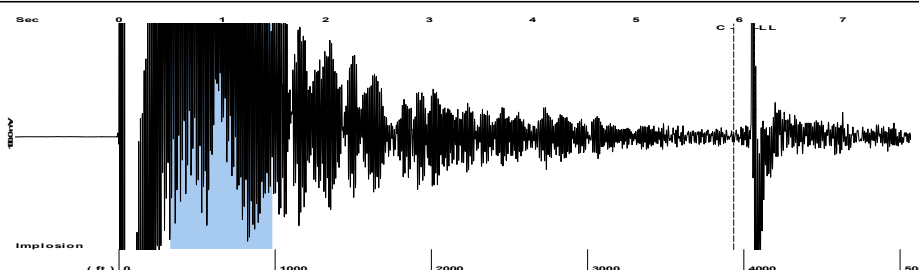
Submitted Electronically

Do NOT Write in This Space - KCC USE ONLY
Date Tested: Results: Date Plugged: Date Repaired: Date Put Back in Service:
Review Completed by: Comments:
TA Approved: Yes Denied Date:

Mail to the Appropriate KCC Conservation Office:

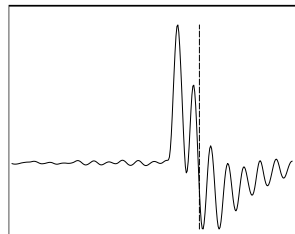
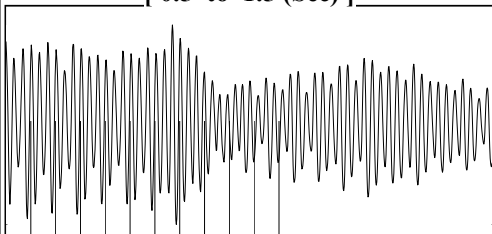
Table with 3 columns: District Office #, Address, Phone. Rows 1-4.

Group: MyWells Well: Kaup 3407 16-1H (acquired on: 07/02/25 14:33:31 )



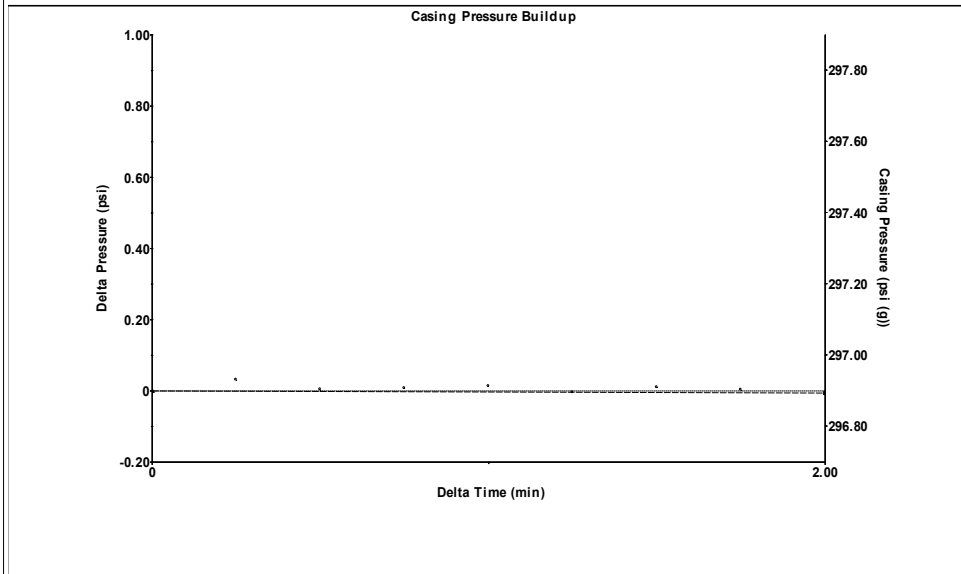
Filter Type High Pass Automatic Collar Count Yes Time 6.146 sec  
 Manual Acoustic Veloc 1243.14 ft/s Manual JTS/sec 19.6078 Joints 128.326 Jts  
 Depth 4067.92 ft

[ 0.5 to 1.5 (Sec) ]



**Analysis Method: Automatic**

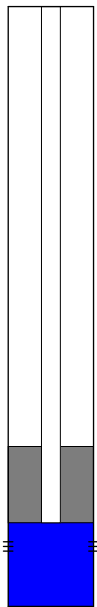
Group: MyWells Well: Kaup 3407 16-1H (acquired on: 07/02/25 14:33:31 )



Change in Pressure -0.01 psi PT 9563  
 Change in Time 2.00 min Range 0 - ? psi

Group: MyWells Well: Kaup 3407 16-1H (acquired on: 07/02/25 14:33:31 )

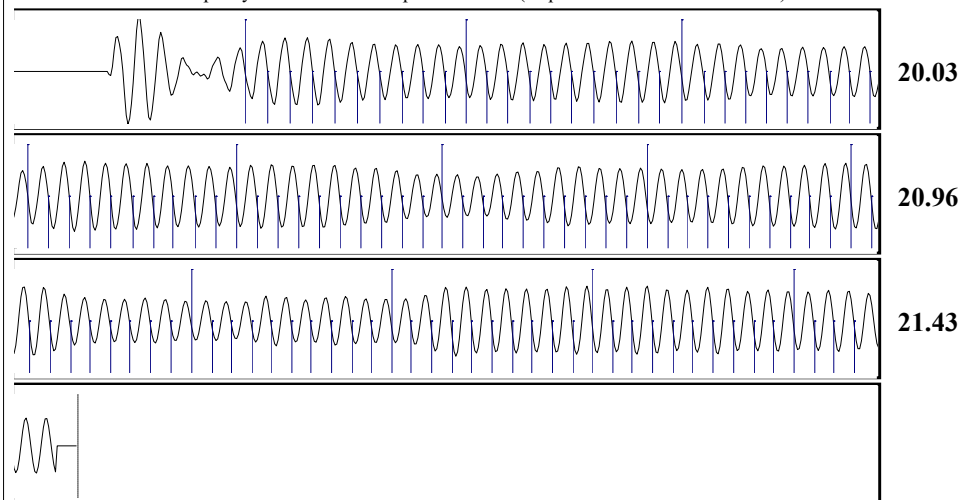
Production		Potential	Casing Pressure
Oil	- * -	- * - BBL/D	296.9 psi (g)
Water	- * -	- * - BBL/D	Casing Pressure Buildup
Gas	- * -	- * - Mscf/D	-0.0 psi
IPR Method		Vogel	2.00 min
PBHP/SBHP	- * -	- * -	Gas/Liquid Interface Pressure
Production Efficiency	0.0		327.5 psi (g)
Oil	40 deg.API	Liquid Level Depth	
Water	1.05 Sp.Gr.H2O	4067.92 ft	
Gas	0.65 Sp.Gr.AIR	Pump Intake Depth	
Acoustic Velocity	1323.76 ft/s	4900.00 ft	
		Formation Depth	
		5150.00 ft	



Static  
 Oil Column Height  
 MD 0 ft  
 Water Column Height  
 MD 1069 ft  
 Static BHP  
 813.5 psi (g)

Acoustic Test This Well is TA'ed

Group: MyWells Well: Kaup 3407 16-1H (acquired on: 07/02/25 14:33:31 )



Acoustic Velocity	1323.76 ft/s	Joints counted	113
Joints Per Second	20.8795 jts/sec	Joints to liquid level	128.326
Depth to liquid level	4067.92 ft	Filter Width	17.6078 21.6078
Automatic Collar Count	Yes	Time to 1st Collar	0.536 5.948

Conservation Division  
District Office No. 2  
3450 N. Rock Road  
Building 600, Suite 601  
Wichita, KS 67226



Phone: 316-337-7400  
<http://kcc.ks.gov/>

Andrew J. French, Chairperson  
Dwight D. Keen, Commissioner  
Annie Kuether, Commissioner

Laura Kelly, Governor

07/14/2025

AMANDA LAIR  
BCE-Mach LLC  
14201 WIRELESS WAY, SUITE 300  
OKLAHOMA CITY, OK 73134-2521

Re: Temporary Abandonment  
API 15-077-21885-01-00  
KAUP 3407 16-1H  
SW/4 Sec.16-34S-07W  
Harper County, Kansas

Dear AMANDA LAIR:

"Your temporary abandonment (TA) application for the well listed above has been approved. In accordance with K.A.R. 82-3-111 the TA status of this well will expire 07/14/2026.

- \* If you return this well to service or plug it, please notify the District Office.
- \* If you sell this well you are required to file a Transfer of Operator form, T-1.
- \* If the well will remain temporarily abandoned, you must submit a new TA application, CP-111, before 07/14/2026.

You may contact me at the number above if you have questions.

Very truly yours,

Neil Lake, ECRS"