

KANSAS CORPORATION COMMISSION
OIL & GAS CONSERVATION DIVISION

Form must be Typed

Form must be signed

All blanks must be complete

TEMPORARY ABANDONMENT WELL APPLICATION

OPERATOR: License# _____

Name: _____

Address 1: _____

Address 2: _____

City: _____ State: _____ Zip: _____ + _____

Contact Person: _____

Phone: (_____) _____

Contact Person Email: _____

Field Contact Person: _____

Field Contact Person Phone: (_____) _____

API No. 15- _____

Spot Description: _____

____ - ____ - ____ - ____ Sec. _____ Twp. _____ S. R. _____ ☐ E ☐ W_____ feet from ☐ N / ☐ S Line of Section_____ feet from ☐ E / ☐ W Line of Section

GPS Location: Lat: _____, Long: _____

Datum: ☐ NAD27 ☐ NAD83 ☐ WGS84County: _____ Elevation: _____ ☐ GL ☐ KB

Lease Name: _____ Well #: _____

Well Type: (check one) ☐ Oil ☐ Gas ☐ OG ☐ WSW ☐ Other: _____☐ SWD Permit #: _____ ☐ ENHR Permit #: _____☐ Gas Storage Permit #: _____

Spud Date: _____ Date Shut-In: _____

	Conductor	Surface	Production	Intermediate	Liner	Tubing
Size						
Setting Depth						
Amount of Cement						
Top of Cement						
Bottom of Cement						

Casing Fluid Level from Surface: _____ How Determined? _____ Date: _____

Casing Squeeze(s): _____ to _____ w / _____ sacks of cement, _____ to _____ w / _____ sacks of cement. Date: _____

Do you have a valid Oil & Gas Lease? ☐ Yes ☐ NoDepth and Type: ☐ Junk in Hole at _____ ☐ Tools in Hole at _____ Casing Leaks: ☐ Yes ☐ No Depth of casing leak(s): _____Type Completion: ☐ ALT. I ☐ ALT. II Depth of: ☐ DV Tool: _____ w / _____ sacks of cement ☐ Port Collar: _____ w / _____ sack of cement

Packer Type: _____ Size: _____ Inch Set at: _____ Feet

Total Depth: _____ Plug Back Depth: _____ Plug Back Method: _____

Geological Data:

Formation Name	Formation Top	Formation Base	Completion Information
1. _____	At: _____ to _____ Feet	Perforation Interval _____ to _____ Feet or Open Hole Interval _____ to _____ Feet	
2. _____	At: _____ to _____ Feet	Perforation Interval _____ to _____ Feet or Open Hole Interval _____ to _____ Feet	

UNDER PENALTY OF PERJURY I HEREBY ATTEST THAT THE INFORMATION CONTAINED HEREIN IS TRUE AND CORRECT TO THE BEST OF MY KNOWLEDGE

Submitted Electronically

**Do NOT Write in This
Space - KCC USE ONLY**

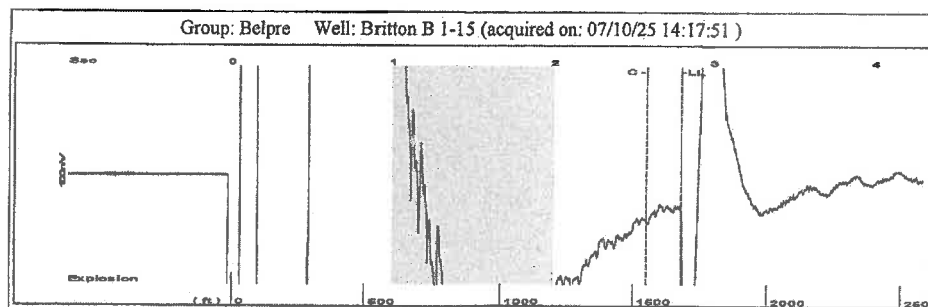
Date Tested: _____ Results: _____ Date Plugged: _____ Date Repaired: _____ Date Put Back in Service: _____

Review Completed by: _____ Comments: _____

TA Approved: ☐ Yes ☐ Denied Date: _____

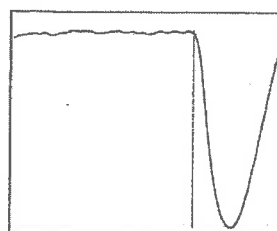
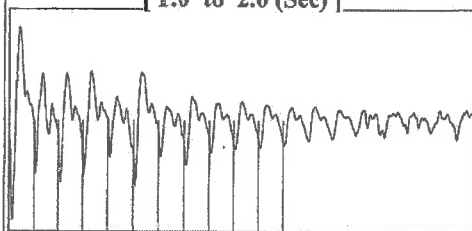
Mail to the Appropriate KCC Conservation Office:

	KCC District Office #1 - 210 E. Frontview, Suite A, Dodge City, KS 67801	Phone 620.682.7933
	KCC District Office #2 - 3450 N. Rock Road, Building 600, Suite 601, Wichita, KS 67226	Phone 316.337.7400
	KCC District Office #3 - 137 E. 21st St., Chanute, KS 66720	Phone 620.902.6450
	KCC District Office #4 - 2301 E. 13th Street, Hays, KS 67601-2651	Phone 785.261.6250

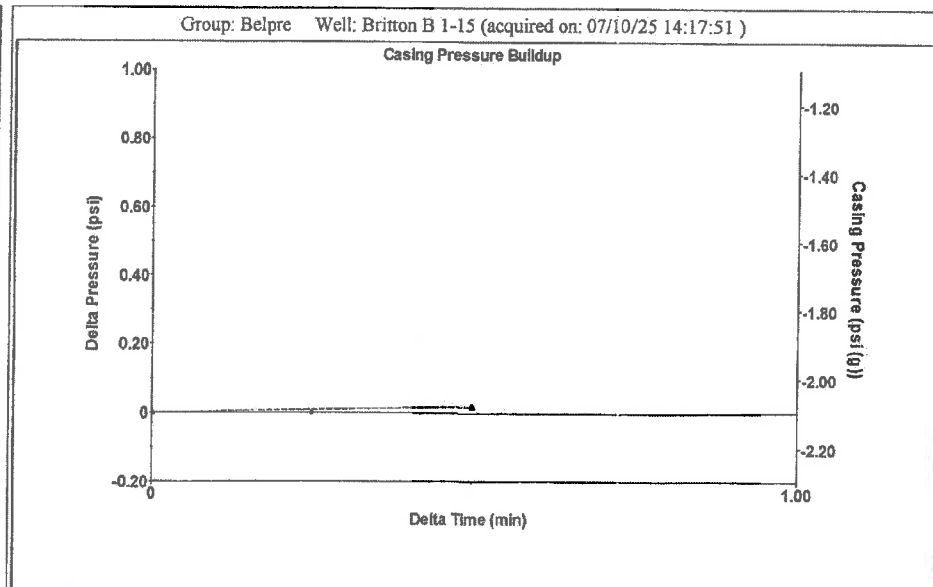


Filter Type High Pass Automatic Collar Count Yes Time 2.801 sec
 Manual Acoustic Velo 1190.26 ft/s Manual JTS/sec 18.7266 Joints 52.8491 Jts
 Depth 1679.54 ft

[1.0 to 2.0 (Sec)]

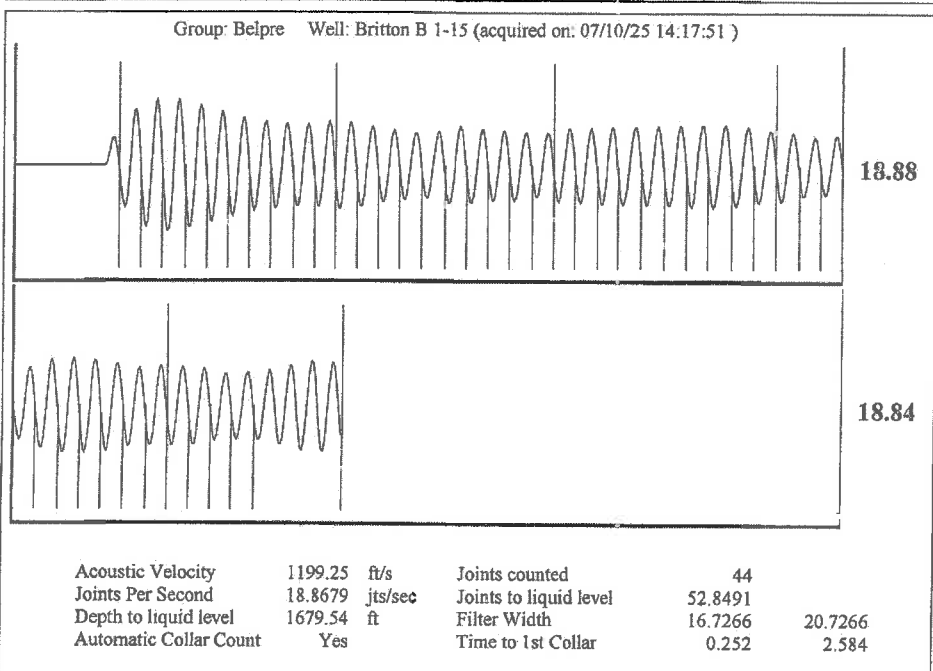


Analysis Method: Automatic



Change in Pressure 0.02 psi PT13440
 Change in Time 0.50 min Range 0 - ? psi

Group: Belpre Well: Britton B 1-15 (acquired on: 07/10/25 14:17:51)			
Production	Potential	Casing Pressure	Producing
Current			
Oil 0	- * - BBL/D	-2.1 psi (g)	
Water 0	- * - BBL/D	Casing Pressure Buildup	
Gas 0.0	- * - Mscf/D	0.017 psi	
		0.50 min	
IPR Method	Vogel	Gas/Liquid Interface Pressure	Annular
PBHP/SBHP	- * -	-1.5 psi (g)	Gas Flow 0 Mscf/D
Production Efficiency	0.0		% Liquid 100 %
Oil 0 deg.API		Liquid Level Depth	
Water 0 Sp.Gr.H2O		1679.54 ft	
Gas 0.69 Sp.Gr.AIR		Pump Intake Depth	
		4387.00 ft	
Acoustic Velocity 1199.25 ft/s		Formation Depth	
		4367.00 ft	
Formation Submergence			Pump Intake
Total Gaseous Liquid Column HT (TVD) 2707 ft			-1.5 psi (g)
Equivalent Gas Free Liquid HT (TVD) 2707 ft			Producing BHP
			-1.5 psi (g)
Acoustic Test			Static BHP
			-14.7 psi (g)



Acoustic Velocity 1199.25 ft/s Joints counted 44
 Joints Per Second 18.8679 jts/sec Joints to liquid level 52.8491
 Depth to liquid level 1679.54 ft Filter Width 16.7266 20.7266
 Automatic Collar Count Yes Time to 1st Collar 0.252 2.584

07/17/2025

Loveness Mpanje
F. G. Holl Company L.L.C.
9431 E CENTRAL STE 100
WICHITA, KS 67206-2563

Re: Temporary Abandonment
API 15-047-20243-00-00
BRITTON B 1
N/2 Sec.15-24S-17W
Edwards County, Kansas

Dear Loveness Mpanje:

"Your temporary abandonment (TA) application for the well listed above has been approved. In accordance with K.A.R. 82-3-111 the TA status of this well will expire 07/17/2026.

- * If you return this well to service or plug it, please notify the District Office.
- * If you sell this well you are required to file a Transfer of Operator form, T-1.
- * If the well will remain temporarily abandoned, you must submit a new TA application, CP-111, before 07/17/2026.

You may contact me at the number above if you have questions.

Very truly yours,

Michael Maier"