

KANSAS CORPORATION COMMISSION
OIL & GAS CONSERVATION DIVISION

TEMPORARY ABANDONMENT WELL APPLICATION

OPERATOR: License#
Name:
Address 1:
Address 2:
City: State: Zip:
Contact Person:
Phone:
Contact Person Email:
Field Contact Person:
Field Contact Person Phone:

API No. 15-
Spot Description:
Sec. Twp. S. R.
GPS Location: Lat: Long:
Datum: NAD27 NAD83 WGS84
County: Elevation:
Lease Name: Well #:
Well Type: Oil Gas OG WSW Other:
SWD Permit #: ENHR Permit #:
Gas Storage Permit #:
Spud Date: Date Shut-In:

Table with 7 columns: Conductor, Surface, Production, Intermediate, Liner, Tubing. Rows include Size, Setting Depth, Amount of Cement, Top of Cement, Bottom of Cement.

Casing Fluid Level from Surface: How Determined? Date:
Casing Squeeze(s): to w / sacks of cement, to w / sacks of cement. Date:
Do you have a valid Oil & Gas Lease? Yes No
Depth and Type: Junk in Hole at Tools in Hole at Casing Leaks: Yes No Depth of casing leak(s):
Type Completion: ALT. I ALT. II Depth of: DV Tool: w / sacks of cement Port Collar: w / sack of cement
Packer Type: Size: Inch Set at: Feet
Total Depth: Plug Back Depth: Plug Back Method:

Geological Data:

Table with 4 columns: Formation Name, Formation Top, Formation Base, Completion Information. Rows 1 and 2.

UNDER PENALTY OF PERJURY I HEREBY ATTEST THAT THE INFORMATION CONTAINED HEREIN IS TRUE AND CORRECT TO THE BEST OF MY KNOWLEDGE

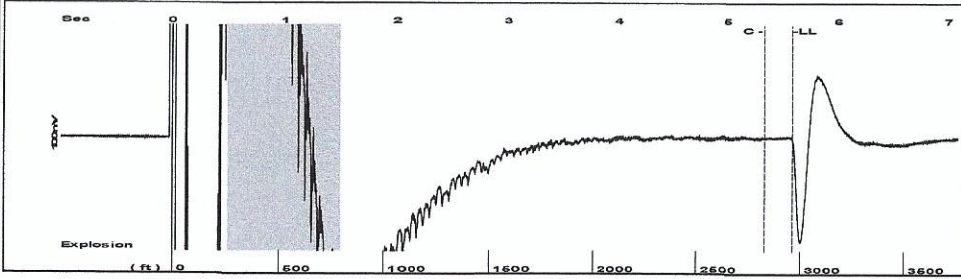
Submitted Electronically

Do NOT Write in This Space - KCC USE ONLY
Date Tested: Results: Date Plugged: Date Repaired: Date Put Back in Service:
Review Completed by: Comments:
TA Approved: Yes Denied Date:

Mail to the Appropriate KCC Conservation Office:

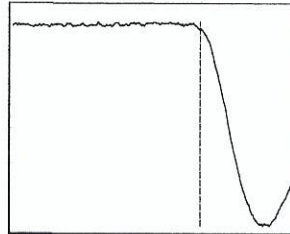
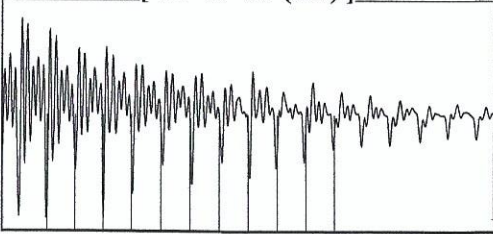
Table with 2 columns: Office Address, Phone. Rows for District Office #1, #2, #3, #4.

Group: Belpre Well: Frohling 3-23 (acquired on: 07/15/25 14:20:17)



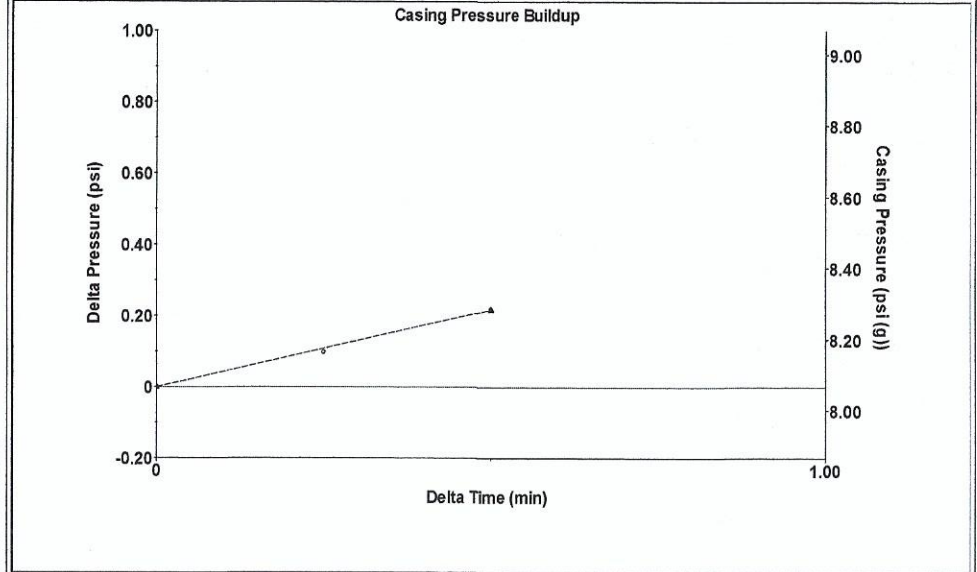
Filter Type High Pass Automatic Collar Count Yes Time 5.583 sec
 Manual Acoustic Velo 1072.51 ft/s Manual JTS/sec 17.1821 Joints 94.964 Jts
 Depth 2963.83 ft

[0.5 to 1.5 (Sec)]



Analysis Method: Automatic

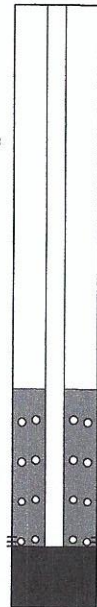
Group: Belpre Well: Frohling 3-23 (acquired on: 07/15/25 14:20:17)



Change in Pressure 0.22 psi PT13440
 Change in Time 0.50 min Range 0 - ? psi

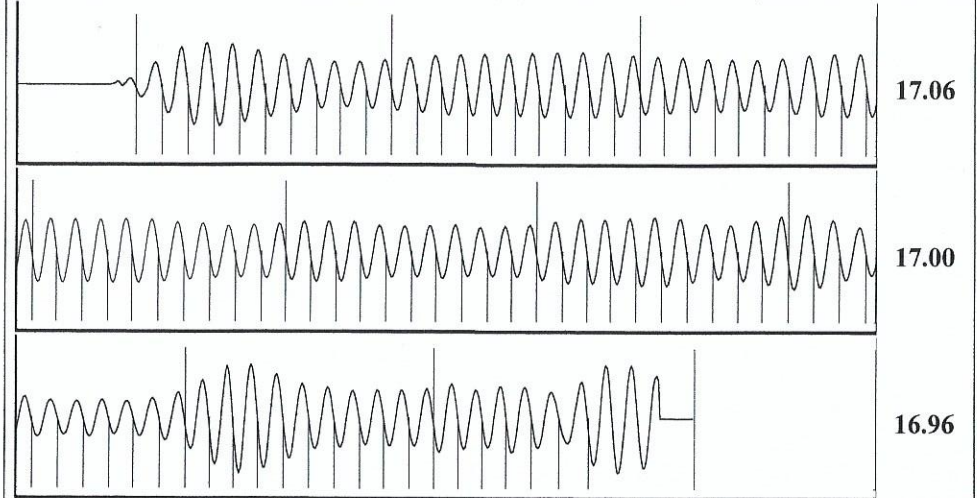
Group: Belpre Well: Frohling 3-23 (acquired on: 07/15/25 14:20:17)

Production			
Current	Potential	Casing Pressure	
Oil - * -	- * - BBL/D	8.1 psi (g)	
Water - * -	- * - BBL/D	Casing Pressure Buildup	
Gas - * -	- * - Mscf/D	0.2 psi	
		0.50 min	
IPR Method	Vogel	Gas/Liquid Interface Pressure	
PBHP/SBHP	- * -	10.3 psi (g)	
Production Efficiency	0.0		
Oil 40 deg.API		Liquid Level Depth	
Water 1.05 Sp.Gr.H2O		2963.83 ft	
Gas 0.92 Sp.Gr.AIR		Pump Intake Depth	
		4403.00 ft	
Acoustic Velocity	1061.73 ft/s	Formation Depth	
		4356.00 ft	



Producing
 Annular Gas Flow 8 Mscf/D
 % Liquid 64 %
 Pump Intake 327.6 psi (g)
 Producing BHP 312.0 psi (g)
 Static BHP - * - psi (g)

Group: Belpre Well: Frohling 3-23 (acquired on: 07/15/25 14:20:17)



Acoustic Velocity	1061.73 ft/s	Joints counted	86
Joints Per Second	17.0095 jts/sec	Joints to liquid level	94.964
Depth to liquid level	2963.83 ft	Filter Width	15.1821 19.1821
Automatic Collar Count	Yes	Time to 1st Collar	0.276 5.332

07/17/2025

Loveness Mpanje
F. G. Holl Company L.L.C.
9431 E CENTRAL STE 100
WICHITA, KS 67206-2563

Re: Temporary Abandonment
API 15-047-21233-00-00
FROHLING 3-23
NW/4 Sec.23-24S-17W
Edwards County, Kansas

Dear Loveness Mpanje:

"Your temporary abandonment (TA) application for the well listed above has been approved. In accordance with K.A.R. 82-3-111 the TA status of this well will expire 07/17/2026.

- * If you return this well to service or plug it, please notify the District Office.
- * If you sell this well you are required to file a Transfer of Operator form, T-1.
- * If the well will remain temporarily abandoned, you must submit a new TA application, CP-111, before 07/17/2026.

You may contact me at the number above if you have questions.

Very truly yours,

Michael Maier"