

KANSAS CORPORATION COMMISSION
OIL & GAS CONSERVATION DIVISION

TEMPORARY ABANDONMENT WELL APPLICATION

OPERATOR: License# _____
 Name: _____
 Address 1: _____
 Address 2: _____
 City: _____ State: _____ Zip: _____ + _____
 Contact Person: _____
 Phone: (_____) _____
 Contact Person Email: _____
 Field Contact Person: _____
 Field Contact Person Phone: (_____) _____

API No. 15- _____
 Spot Description: _____
 _____ - _____ - _____ - _____ Sec. _____ Twp. _____ S. R. _____ E W
 _____ feet from N / S Line of Section
 _____ feet from E / W Line of Section
 GPS Location: Lat: _____, Long: _____
(e.g. xx.xxxxx) (e.g. -xxx.xxxxx)
 Datum: NAD27 NAD83 WGS84
 County: _____ Elevation: _____ GL KB
 Lease Name: _____ Well #: _____
 Well Type: (check one) Oil Gas OG WSW Other: _____
 SWD Permit #: _____ ENHR Permit #: _____
 Gas Storage Permit #: _____
 Spud Date: _____ Date Shut-In: _____

| | Conductor | Surface | Production | Intermediate | Liner | Tubing |
|------------------|-----------|---------|------------|--------------|-------|--------|
| Size | | | | | | |
| Setting Depth | | | | | | |
| Amount of Cement | | | | | | |
| Top of Cement | | | | | | |
| Bottom of Cement | | | | | | |

Casing Fluid Level from Surface: _____ How Determined? _____ Date: _____
 Casing Squeeze(s): _____ to _____ w / _____ sacks of cement, _____ to _____ w / _____ sacks of cement. Date: _____
(top) (bottom) (top) (bottom)
 Do you have a valid Oil & Gas Lease? Yes No
 Depth and Type: Junk in Hole at _____ Tools in Hole at _____ Casing Leaks: Yes No Depth of casing leak(s): _____
(depth) (depth)
 Type Completion: ALT. I ALT. II Depth of: DV Tool: _____ w / _____ sacks of cement Port Collar: _____ w / _____ sack of cement
(depth) (depth)
 Packer Type: _____ Size: _____ Inch Set at: _____ Feet
 Total Depth: _____ Plug Back Depth: _____ Plug Back Method: _____

Geological Data:

| Formation Name | Formation Top | Formation Base | Completion Information |
|----------------|---------------|----------------|--|
| 1. _____ | At: _____ | to _____ Feet | Perforation Interval _____ to _____ Feet or Open Hole Interval _____ to _____ Feet |
| 2. _____ | At: _____ | to _____ Feet | Perforation Interval _____ to _____ Feet or Open Hole Interval _____ to _____ Feet |

UNDER PENALTY OF PERJURY I HEREBY ATTEST THAT THE INFORMATION CONTAINED HEREIN IS TRUE AND CORRECT TO THE BEST OF MY KNOWLEDGE

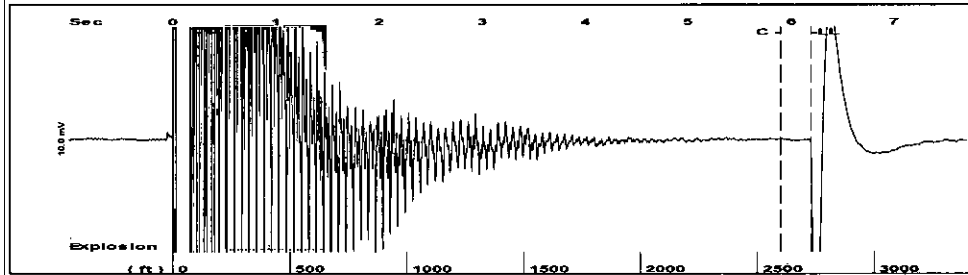
Submitted Electronically

| | | | | | |
|---|--|----------------|---------------------|----------------------|---------------------------------|
| Do NOT Write in This Space - KCC USE ONLY | Date Tested: _____ | Results: _____ | Date Plugged: _____ | Date Repaired: _____ | Date Put Back in Service: _____ |
| | Review Completed by: _____ Comments: _____ | | | | |
| TA Approved: <input type="checkbox"/> Yes <input type="checkbox"/> Denied Date: _____ | | | | | |

Mail to the Appropriate KCC Conservation Office:

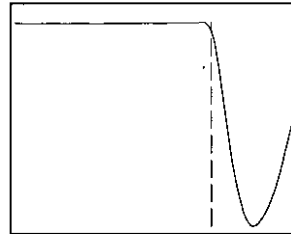
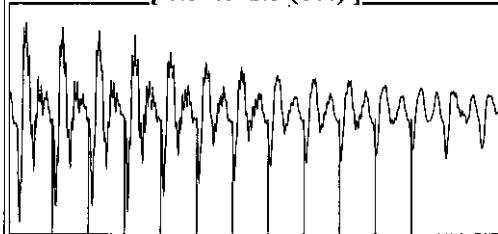
| | | |
|--|--|--------------------|
|  | KCC District Office #1 - 210 E. Frontview, Suite A, Dodge City, KS 67801 | Phone 620.682.7933 |
| | KCC District Office #2 - 3450 N. Rock Road, Building 600, Suite 601, Wichita, KS 67226 | Phone 316.337.7400 |
| | KCC District Office #3 - 137 E. 21st St., Chanute, KS 66720 | Phone 620.902.6450 |
| | KCC District Office #4 - 2301 E. 13th Street, Hays, KS 67601-2651 | Phone 785.261.6250 |

Group: MyWells Well: Karen Cunningham 1 (acquired on: 08/14/25 13:19:16)



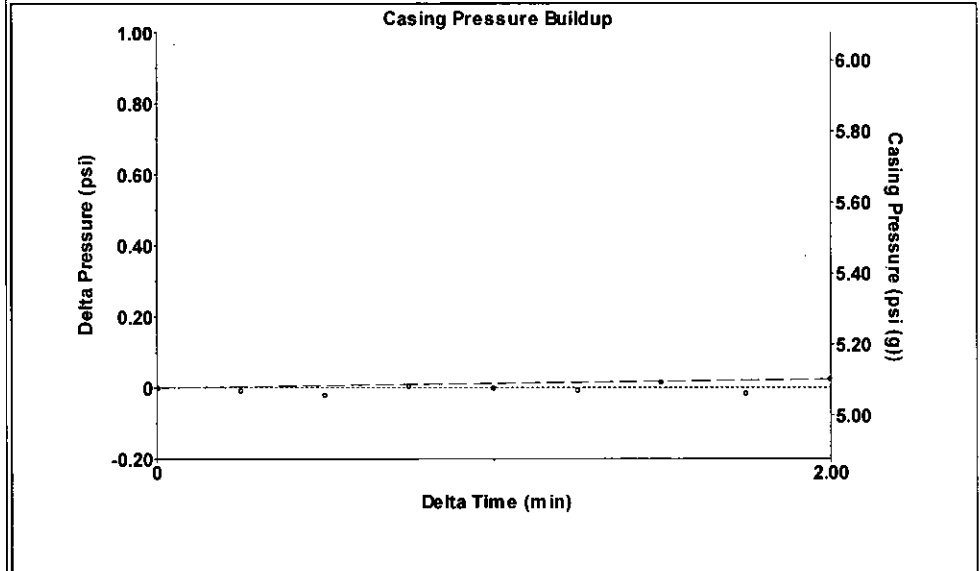
Filter Type High Pass Automatic Collar Count Yes Time 6.189 sec
 Manual Acoustic Velo 867.305 ft/s Manual JTS/sec 13.6799 Joints 86.081 Jts
 Depth 2728.77 ft

[0.5 to 1.5 (Sec)]



Analysis Method: Automatic

Group: MyWells Well: Karen Cunningham 1 (acquired on: 08/14/25 13:19:16)

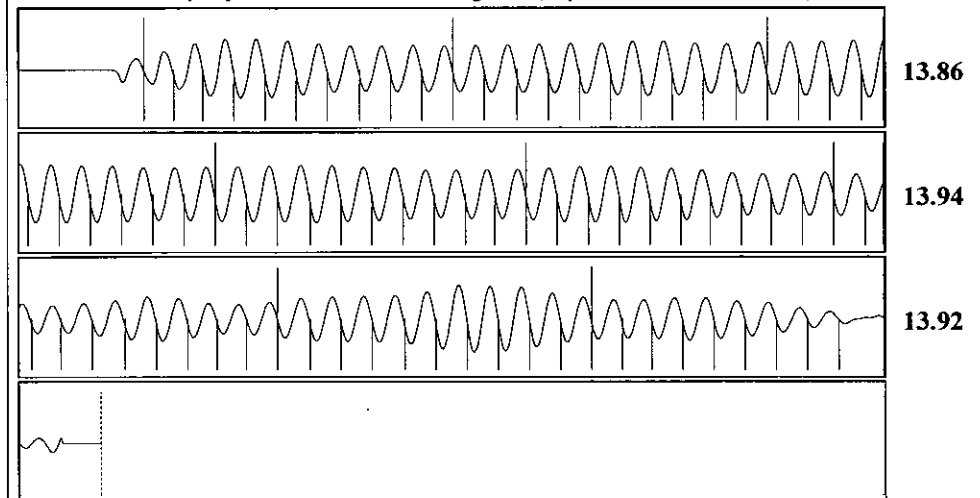


Change in Pressure 0.02 psi PT15565
 Range 0 - 2 psi
 Change in Time 2.00 min

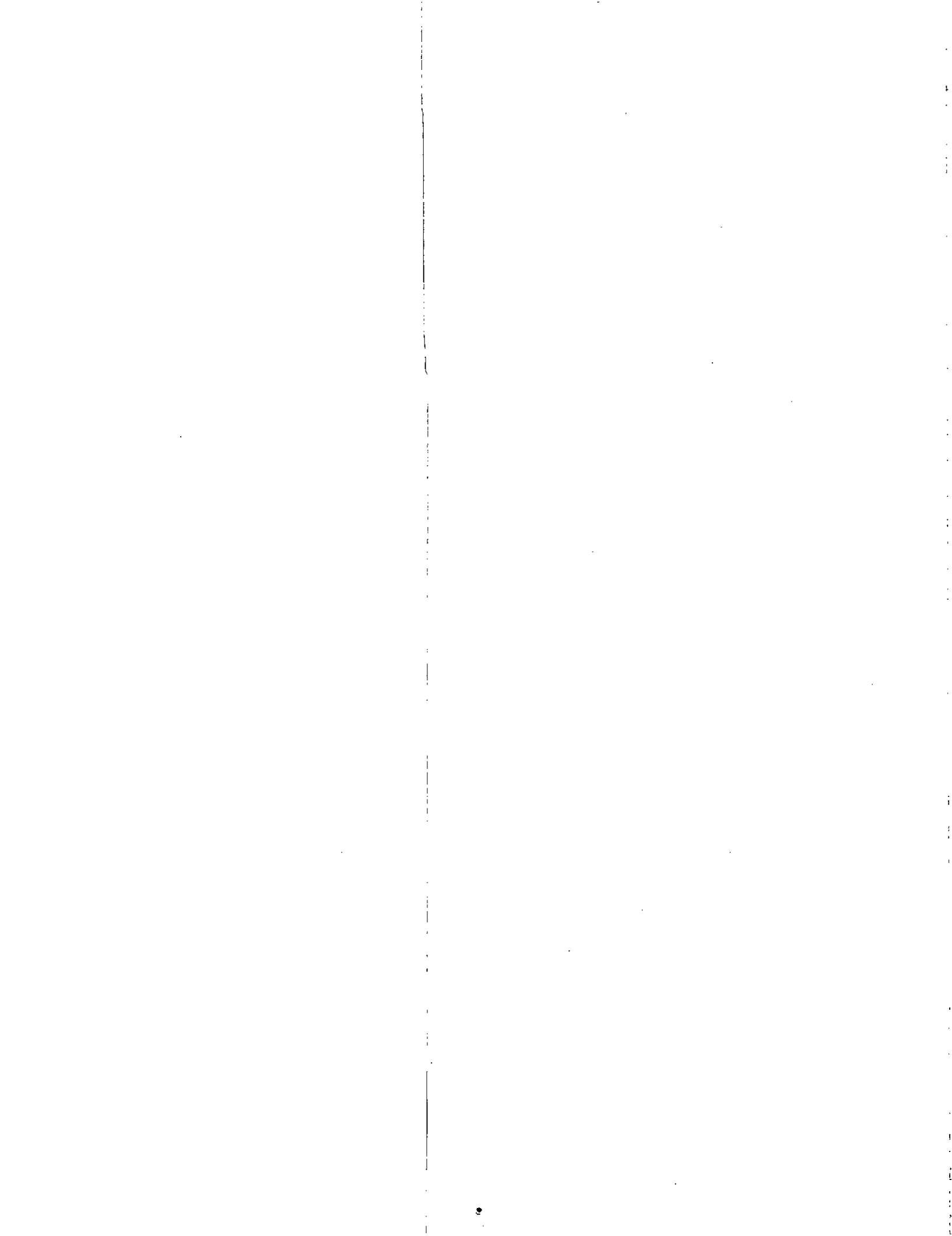
Group: MyWells Well: Karen Cunningham 1 (acquired on: 08/14/25 13:19:16)

| | | | |
|--------------------------------------|--------------|-------------------------------|---------------|
| Production | | Producing | |
| Current | Potential | Casing Pressure | 5.1 psi (g) |
| Oil - * | - * - BBL/D | Casing Pressure Buildup | 0.024 psi |
| Water - * | - * - BBL/D | 2.00 min | |
| Gas - * | - * - Mscf/D | Gas/Liquid Interface Pressure | - * - psi (g) |
| IPR Method | Vogel | Liquid Level Depth | 2728.77 ft |
| PBHP/SBHP | - * - | Pump Intake Depth | 4422.00 ft |
| Production Efficiency | 0.0 | Formation Depth | 4360.00 ft |
| Oil 40 deg.API | | Pump Intake | - * - psi (g) |
| Water 1.05 Sp.Gr.H2O | | Producing BHP | - * - psi (g) |
| Gas 1.09 Sp.Gr.AIR | | Static BHP | - * - psi (g) |
| Acoustic Velocity 881.812 ft/s | | | |
| Formation Submergence | | | |
| Total Gaseous Liquid Column HT (TVD) | - * - ft | | |
| Equivalent Gas Free Liquid HT (TVD) | - * - ft | | |
| Karen Cunningham 1 | | | |

Group: MyWells Well: Karen Cunningham 1 (acquired on: 08/14/25 13:19:16)



Acoustic Velocity 881.812 ft/s Joints counted 78
 Joints Per Second 13.9087 jts/sec Joints to liquid level 86.081
 Depth to liquid level 2728.77 ft Filter Width 11.6799 15.6799
 Automatic Collar Count Yes Time to 1st Collar 0.288 5.896



Conservation Division
District Office No. 1
210 E. Frontview, Suite A
Dodge City, KS 67801



Phone: 620-682-7933
<http://kcc.ks.gov/>

Andrew J. French, Chairperson
Dwight D. Keen, Commissioner
Annie Kuether, Commissioner

Laura Kelly, Governor

08/28/2025

Anthony Farrar
Indian Oil Co., Inc.
308 S. Main St.
PO BOX 209
MEDICINE LODGE, KS 67104-0209

Re: Temporary Abandonment
API 15-007-24118-00-00
KAREN CUNNINGHAM 1
NE/4 Sec.15-32S-12W
Barber County, Kansas

Dear Anthony Farrar:

"Your temporary abandonment (TA) application for the well listed above has been approved. In accordance with K.A.R. 82-3-111 the TA status of this well will expire 08/28/2026.

- * If you return this well to service or plug it, please notify the District Office.
- * If you sell this well you are required to file a Transfer of Operator form, T-1.
- * If the well will remain temporarily abandoned, you must submit a new TA application, CP-111, before 08/28/2026.

You may contact me at the number above if you have questions.

Very truly yours,

Michael Maier"