

KANSAS CORPORATION COMMISSION
OIL & GAS CONSERVATION DIVISION

TEMPORARY ABANDONMENT WELL APPLICATION

OPERATOR: License# _____
 Name: _____
 Address 1: _____
 Address 2: _____
 City: _____ State: _____ Zip: _____ + _____
 Contact Person: _____
 Phone: (_____) _____
 Contact Person Email: _____
 Field Contact Person: _____
 Field Contact Person Phone: (_____) _____

API No. 15- _____
 Spot Description: _____
 _____ - _____ - _____ - _____ Sec. _____ Twp. _____ S. R. _____ E W
 _____ feet from N / S Line of Section
 _____ feet from E / W Line of Section
 GPS Location: Lat: _____, Long: _____
(e.g. xx.xxxxx) (e.g. -xxx.xxxxx)
 Datum: NAD27 NAD83 WGS84
 County: _____ Elevation: _____ GL KB
 Lease Name: _____ Well #: _____
 Well Type: (check one) Oil Gas OG WSW Other: _____
 SWD Permit #: _____ ENHR Permit #: _____
 Gas Storage Permit #: _____
 Spud Date: _____ Date Shut-In: _____

	Conductor	Surface	Production	Intermediate	Liner	Tubing
Size						
Setting Depth						
Amount of Cement						
Top of Cement						
Bottom of Cement						

Casing Fluid Level from Surface: _____ How Determined? _____ Date: _____
 Casing Squeeze(s): _____ to _____ w / _____ sacks of cement, _____ to _____ w / _____ sacks of cement. Date: _____
(top) (bottom) (top) (bottom)
 Do you have a valid Oil & Gas Lease? Yes No
 Depth and Type: Junk in Hole at _____ Tools in Hole at _____ Casing Leaks: Yes No Depth of casing leak(s): _____
(depth) (depth)
 Type Completion: ALT. I ALT. II Depth of: DV Tool: _____ w / _____ sacks of cement Port Collar: _____ w / _____ sack of cement
(depth) (depth)
 Packer Type: _____ Size: _____ Inch Set at: _____ Feet
 Total Depth: _____ Plug Back Depth: _____ Plug Back Method: _____

Geological Data:

Formation Name	Formation Top	Formation Base	Completion Information
1. _____	At: _____	to _____ Feet	Perforation Interval _____ to _____ Feet or Open Hole Interval _____ to _____ Feet
2. _____	At: _____	to _____ Feet	Perforation Interval _____ to _____ Feet or Open Hole Interval _____ to _____ Feet

UNDER PENALTY OF PERJURY I HEREBY ATTEST THAT THE INFORMATION CONTAINED HEREIN IS TRUE AND CORRECT TO THE BEST OF MY KNOWLEDGE

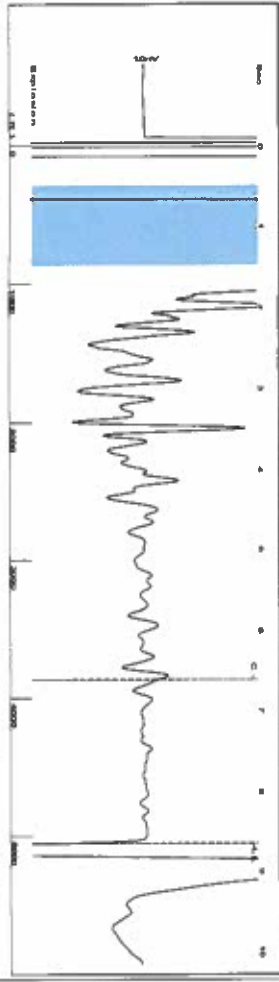
Submitted Electronically

Do NOT Write in This Space - KCC USE ONLY	Date Tested: _____	Results: _____	Date Plugged: _____	Date Repaired: _____	Date Put Back in Service: _____
	Review Completed by: _____ Comments: _____				
TA Approved: <input type="checkbox"/> Yes <input type="checkbox"/> Denied Date: _____					

Mail to the Appropriate KCC Conservation Office:

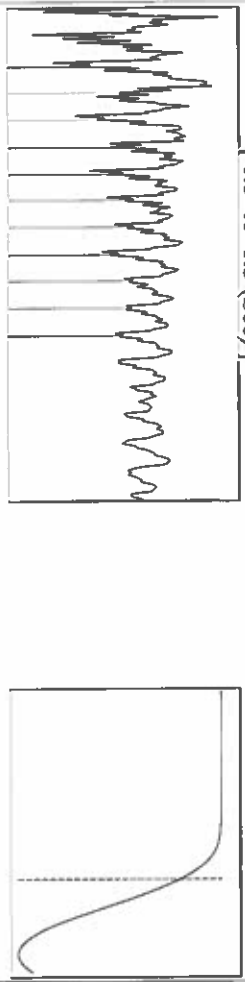
	KCC District Office #1 - 210 E. Frontview, Suite A, Dodge City, KS 67801	Phone 620.682.7933
	KCC District Office #2 - 3450 N. Rock Road, Building 600, Suite 601, Wichita, KS 67226	Phone 316.337.7400
	KCC District Office #3 - 137 E. 21st St., Chanute, KS 66720	Phone 620.902.6450
	KCC District Office #4 - 2301 E. 13th Street, Hays, KS 67601-2651	Phone 785.261.6250

Group: SUBLETTE Well: VMLU 601 (acquired on 08/19/25 12:51:10)



Filter Type: High Pass
 Manual Acoustic Velocity: 1163.3 ft/s
 Automatic Collar Count: Yes
 Manual JTS/sec: 18.3486
 Time: 8:647 sec
 Joints: 159.373 Jts
 Depth: 5052.12 ft

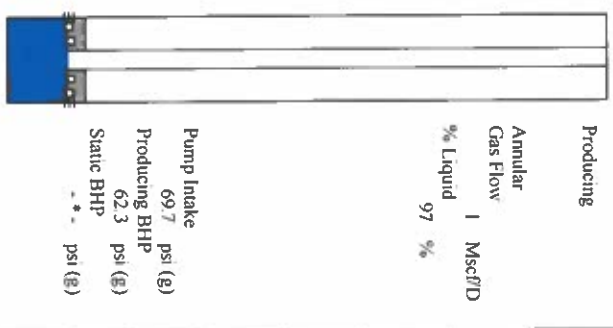
0.5 to 1.5 (Sec)



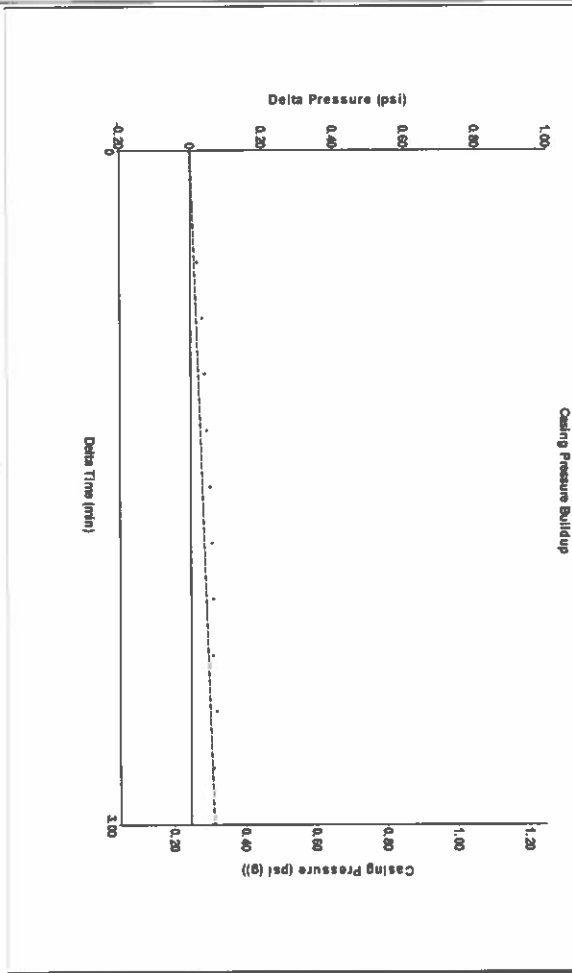
Analysis Method: Automatic

Group: SUBLETTE Well: VMLU 601 (acquired on 08/19/25 12:51:10)

Production	Potential	Casing Pressure	Producing
Current	BBL/D	0.2 psi (g)	Annular
Oil	BBL/D	Casing Pressure Buildup	Gas Flow
Water	Misc/D	0.1 psi	% Liquid
Gas	Misc/D	3.00 min	97 %
IPR Method	Vogel	Gas/Liquid Interface Pressure	Misc/D
PBHP/SBHP	0.0	2.5 psi (g)	
Production Efficiency			
Oil	40 deg API	Liquid Level Depth	
Water	1.05 Sp Gr H2O	5052.12 ft	
Gas	0.83 Sp Gr AIR	Pump Intake Depth	
Acoustic Velocity	1168.53 ft/s	5256.00 ft	
		Formation Depth	
		5234.00 ft	

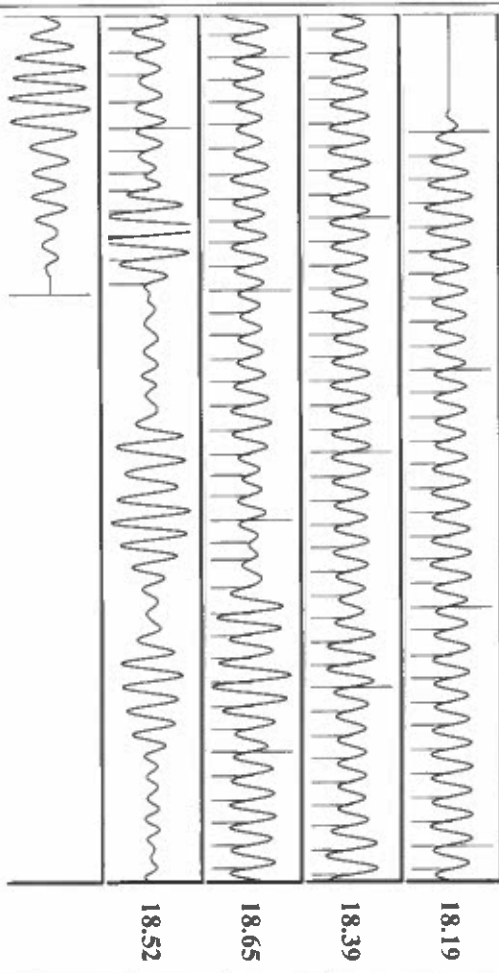


Group: SUBLETTE Well: VMLU 601 (acquired on 08/19/25 12:51:10)



Change in Pressure: 0.06 psi
 Change in Time: 3.00 min
 PT18868 Range
 0 - 2 psi

Group: SUBLETTE Well: VMLU 601 (acquired on 08/19/25 12:51:10)



Acoustic Velocity	Joints Per Second	Depth to liquid level	Automatic Collar Count	Joints counted	Joints to liquid level	Filter Width	Time to 1st Collar
1168.53 ft/s	18.431 Jts/sec	5052.12 ft	Yes	117	159.373	16.3486	0.272
						20.3486	6.62

08/28/2025

Idania Medina
Merit Energy Company, LLC
13727 NOEL ROAD, SUITE 1200
DALLAS, TX 75240-7362

Re: Temporary Abandonment
API 15-081-20994-00-01
VICTORY MORROW LIME UNIT 601
NE/4 Sec.32-30S-33W
Haskell County, Kansas

Dear Idania Medina:

"Your temporary abandonment (TA) application for the well listed above has been approved. In accordance with K.A.R. 82-3-111 the TA status of this well will expire 08/28/2026.

- * If you return this well to service or plug it, please notify the District Office.
- * If you sell this well you are required to file a Transfer of Operator form, T-1.
- * If the well will remain temporarily abandoned, you must submit a new TA application, CP-111, before 08/28/2026.

You may contact me at the number above if you have questions.

Very truly yours,

Michael Maier"