

KANSAS CORPORATION COMMISSION
OIL & GAS CONSERVATION DIVISION

TEMPORARY ABANDONMENT WELL APPLICATION

OPERATOR: License#
Name:
Address 1:
Address 2:
City: State: Zip:
Contact Person:
Phone:
Contact Person Email:
Field Contact Person:
Field Contact Person Phone:

API No. 15-
Spot Description:
Sec. Twp. S. R.
GPS Location: Lat: Long:
Datum: NAD27 NAD83 WGS84
County: Elevation:
Lease Name: Well #:
Well Type: Oil Gas OG WSW Other:
SWD Permit #: ENHR Permit #:
Gas Storage Permit #:
Spud Date: Date Shut-In:

Table with 7 columns: Conductor, Surface, Production, Intermediate, Liner, Tubing. Rows include Size, Setting Depth, Amount of Cement, Top of Cement, Bottom of Cement.

Casing Fluid Level from Surface: How Determined? Date:
Casing Squeeze(s): to w / sacks of cement, to w / sacks of cement. Date:
Do you have a valid Oil & Gas Lease? Yes No
Depth and Type: Junk in Hole at Tools in Hole at Casing Leaks: Yes No Depth of casing leak(s):
Type Completion: ALT. I ALT. II Depth of: DV Tool: w / sacks of cement Port Collar: w / sack of cement
Packer Type: Size: Inch Set at: Feet
Total Depth: Plug Back Depth: Plug Back Method:

Geological Date:

Table with 4 columns: Formation Name, Formation Top, Formation Base, Completion Information. Rows 1 and 2.

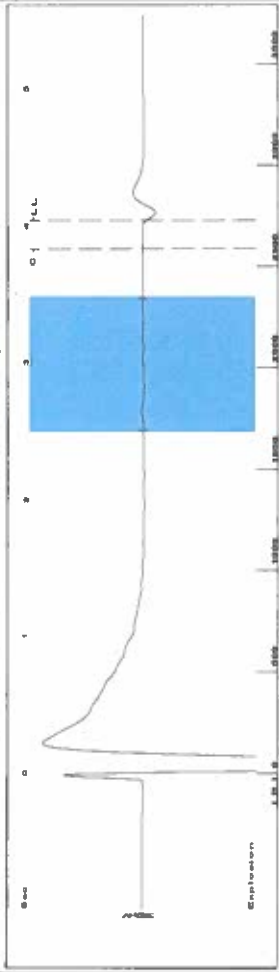
UNDER PENALTY OF PERJURY I HEREBY ATTEST THAT THE INFORMATION CONTAINED HEREIN IS TRUE AND CORRECT TO THE BEST OF MY KNOWLEDGE

Submitted Electronically

Do NOT Write in This Space - KCC USE ONLY
Date Tested: Results: Date Plugged: Date Repaired: Date Put Back in Service:
Review Completed by: Comments:
TA Approved: Yes Denied Date:

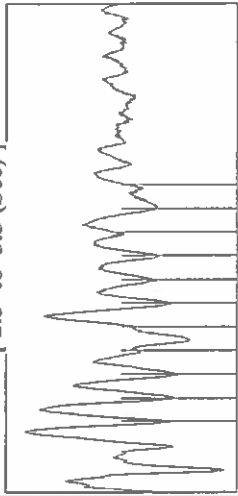
Mail to the Appropriate KCC Conservation Office:

Table with 3 columns: District Office #, Address, Phone. Rows 1-4.



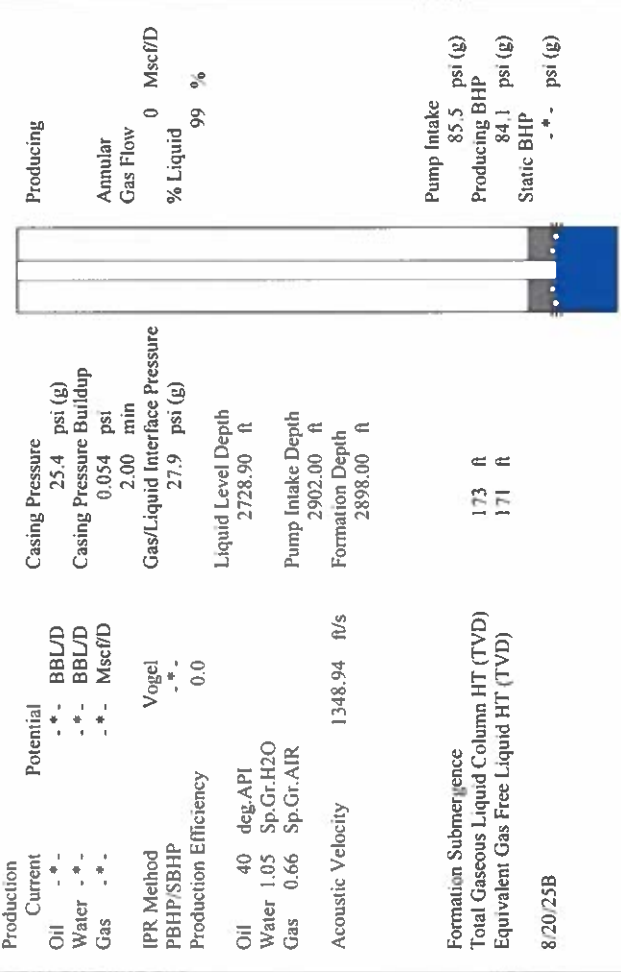
Filter Type High Pass Automatic Collar Count Yes Time 4.046 sec
 Manual Acoustic Velocity 1309.92 ft/s Manual JTS/sec 20.6612 Joints 86.0851 Jts Depth 2728.90 ft

[2.5 to 3.5 (Sec)]

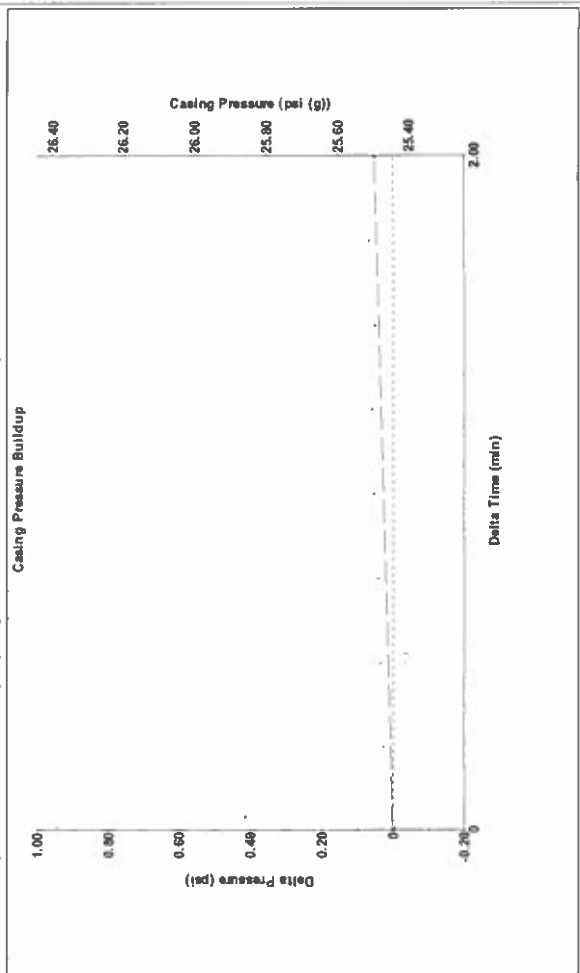


Change in Pressure 0.05 psi PT18788 Range
 Change in Time 2.00 min

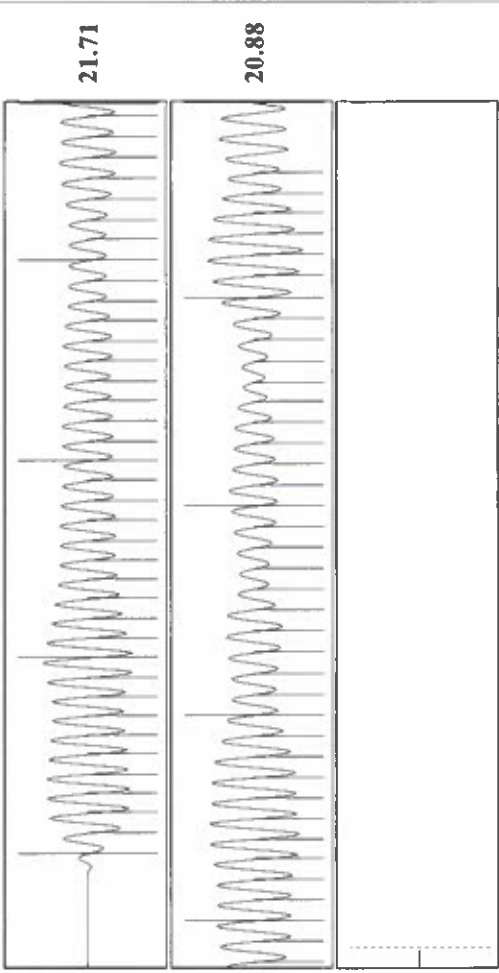
Analysis Method: Automatic



Production	Potential	Casing Pressure	25.4 psi (g)
Oil - * -	BBL/D	Casing Pressure Buildup	0.054 psi
Water - * -	BBL/D	Gas/Liquid Interface Pressure	27.9 psi (g)
Gas - * -	Mscf/D	Liquid Level Depth	2728.90 ft
IPR Method	Vogel	Pump Intake Depth	2902.00 ft
PBHP/SBHP	- * -	Formation Depth	2898.00 ft
Production Efficiency	0.0		
Oil 40 deg.API			
Water 1.05 Sp.Gr.H2O			
Gas 0.66 Sp.Gr.AIR			
Acoustic Velocity	1348.94 ft/s		
Formation Submergence			
Total Gaseous Liquid Column HT (TVD)	173 ft		
Equivalent Gas Free Liquid HT (TVD)	171 ft		
8/20/25B			



Change in Pressure 0.05 psi PT18788 Range
 Change in Time 2.00 min



Acoustic Velocity 1348.94 ft/s Joints counted 76
 Joints Per Second 21.2766 jts/sec Joints to liquid level 86.0851
 Depth to liquid level 2728.9 ft Filter Width 22.6612
 Automatic Collar Count Yes Time to 1st Collar 3.836

Conservation Division
District Office No. 1
210 E. Frontview, Suite A
Dodge City, KS 67801



Phone: 620-682-7933
<http://kcc.ks.gov/>

Andrew J. French, Chairperson
Dwight D. Keen, Commissioner
Annie Kuether, Commissioner

Laura Kelly, Governor

08/28/2025

Idania Medina
Merit Energy Company, LLC
13727 NOEL ROAD, SUITE 1200
DALLAS, TX 75240-7362

Re: Temporary Abandonment
API 15-067-20382-00-00
HOFFMAN O 2
NW/4 Sec.10-27S-36W
Grant County, Kansas

Dear Idania Medina:

"Your temporary abandonment (TA) application for the well listed above has been approved. In accordance with K.A.R. 82-3-111 the TA status of this well will expire 08/28/2026.

- * If you return this well to service or plug it, please notify the District Office.
- * If you sell this well you are required to file a Transfer of Operator form, T-1.
- * If the well will remain temporarily abandoned, you must submit a new TA application, CP-111, before 08/28/2026.

You may contact me at the number above if you have questions.

Very truly yours,

Michael Maier"