

KANSAS CORPORATION COMMISSION  
OIL & GAS CONSERVATION DIVISION

TEMPORARY ABANDONMENT WELL APPLICATION

OPERATOR: License# \_\_\_\_\_  
 Name: \_\_\_\_\_  
 Address 1: \_\_\_\_\_  
 Address 2: \_\_\_\_\_  
 City: \_\_\_\_\_ State: \_\_\_\_\_ Zip: \_\_\_\_\_ + \_\_\_\_\_  
 Contact Person: \_\_\_\_\_  
 Phone: ( \_\_\_\_\_ ) \_\_\_\_\_  
 Contact Person Email: \_\_\_\_\_  
 Field Contact Person: \_\_\_\_\_  
 Field Contact Person Phone: ( \_\_\_\_\_ ) \_\_\_\_\_

API No. 15- \_\_\_\_\_  
 Spot Description: \_\_\_\_\_  
 \_\_\_\_\_ - \_\_\_\_\_ - \_\_\_\_\_ - \_\_\_\_\_ Sec. \_\_\_\_\_ Twp. \_\_\_\_\_ S. R. \_\_\_\_\_  E  W  
 \_\_\_\_\_ feet from  N /  S Line of Section  
 \_\_\_\_\_ feet from  E /  W Line of Section  
 GPS Location: Lat: \_\_\_\_\_, Long: \_\_\_\_\_  
(e.g. xx.xxxxx) (e.g. -xxx.xxxxx)  
 Datum:  NAD27  NAD83  WGS84  
 County: \_\_\_\_\_ Elevation: \_\_\_\_\_  GL  KB  
 Lease Name: \_\_\_\_\_ Well #: \_\_\_\_\_  
 Well Type: (check one)  Oil  Gas  OG  WSW  Other: \_\_\_\_\_  
 SWD Permit #: \_\_\_\_\_  ENHR Permit #: \_\_\_\_\_  
 Gas Storage Permit #: \_\_\_\_\_  
 Spud Date: \_\_\_\_\_ Date Shut-In: \_\_\_\_\_

	Conductor	Surface	Production	Intermediate	Liner	Tubing
Size						
Setting Depth						
Amount of Cement						
Top of Cement						
Bottom of Cement						

Casing Fluid Level from Surface: \_\_\_\_\_ How Determined? \_\_\_\_\_ Date: \_\_\_\_\_  
 Casing Squeeze(s): \_\_\_\_\_ to \_\_\_\_\_ w / \_\_\_\_\_ sacks of cement, \_\_\_\_\_ to \_\_\_\_\_ w / \_\_\_\_\_ sacks of cement. Date: \_\_\_\_\_  
(top) (bottom) (top) (bottom)  
 Do you have a valid Oil & Gas Lease?  Yes  No  
 Depth and Type:  Junk in Hole at \_\_\_\_\_  Tools in Hole at \_\_\_\_\_ Casing Leaks:  Yes  No Depth of casing leak(s): \_\_\_\_\_  
(depth) (depth)  
 Type Completion:  ALT. I  ALT. II Depth of:  DV Tool: \_\_\_\_\_ w / \_\_\_\_\_ sacks of cement  Port Collar: \_\_\_\_\_ w / \_\_\_\_\_ sack of cement  
(depth) (depth)  
 Packer Type: \_\_\_\_\_ Size: \_\_\_\_\_ Inch Set at: \_\_\_\_\_ Feet  
 Total Depth: \_\_\_\_\_ Plug Back Depth: \_\_\_\_\_ Plug Back Method: \_\_\_\_\_

**Geological Data:**

Formation Name	Formation Top	Formation Base	Completion Information
1. _____	At: _____	to _____ Feet	Perforation Interval _____ to _____ Feet or Open Hole Interval _____ to _____ Feet
2. _____	At: _____	to _____ Feet	Perforation Interval _____ to _____ Feet or Open Hole Interval _____ to _____ Feet

UNDER PENALTY OF PERJURY I HEREBY ATTEST THAT THE INFORMATION CONTAINED HEREIN IS TRUE AND CORRECT TO THE BEST OF MY KNOWLEDGE

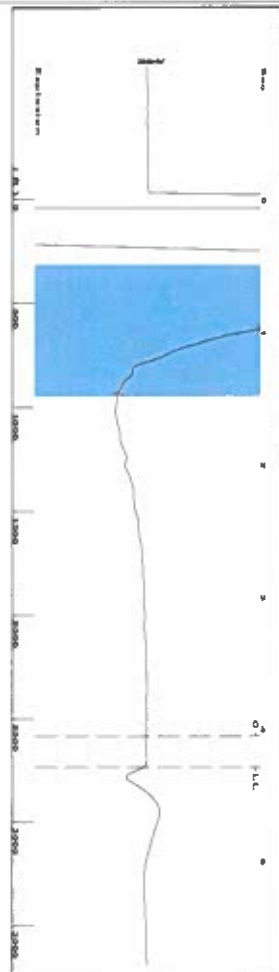
Submitted Electronically

<b>Do NOT Write in This Space - KCC USE ONLY</b>	Date Tested: _____	Results: _____	Date Plugged: _____	Date Repaired: _____	Date Put Back in Service: _____
	Review Completed by: _____ Comments: _____				
TA Approved: <input type="checkbox"/> Yes <input type="checkbox"/> Denied Date: _____					

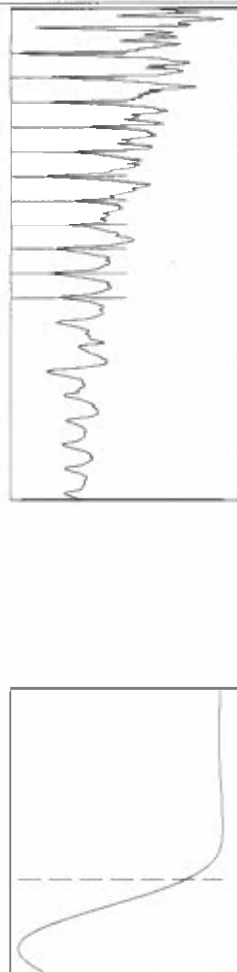
Mail to the Appropriate KCC Conservation Office:

	KCC District Office #1 - 210 E. Frontview, Suite A, Dodge City, KS 67801	Phone 620.682.7933
	KCC District Office #2 - 3450 N. Rock Road, Building 600, Suite 601, Wichita, KS 67226	Phone 316.337.7400
	KCC District Office #3 - 137 E. 21st St., Chanute, KS 66720	Phone 620.902.6450
	KCC District Office #4 - 2301 E. 13th Street, Hays, KS 67601-2651	Phone 785.261.6250

Group: Merit Energy Company-Ulysses Well: Schwein A-2 (acquired on: 08/26/25 15:01:35)



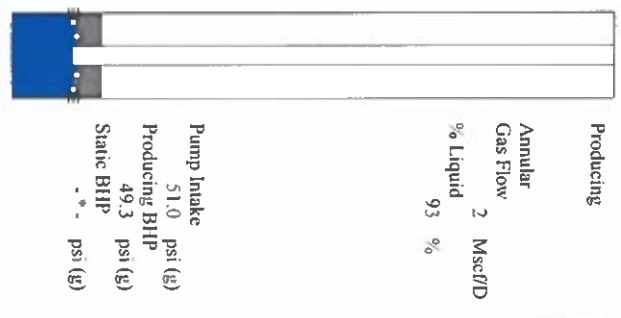
[ 0.5 to 1.5 (Sec) ]



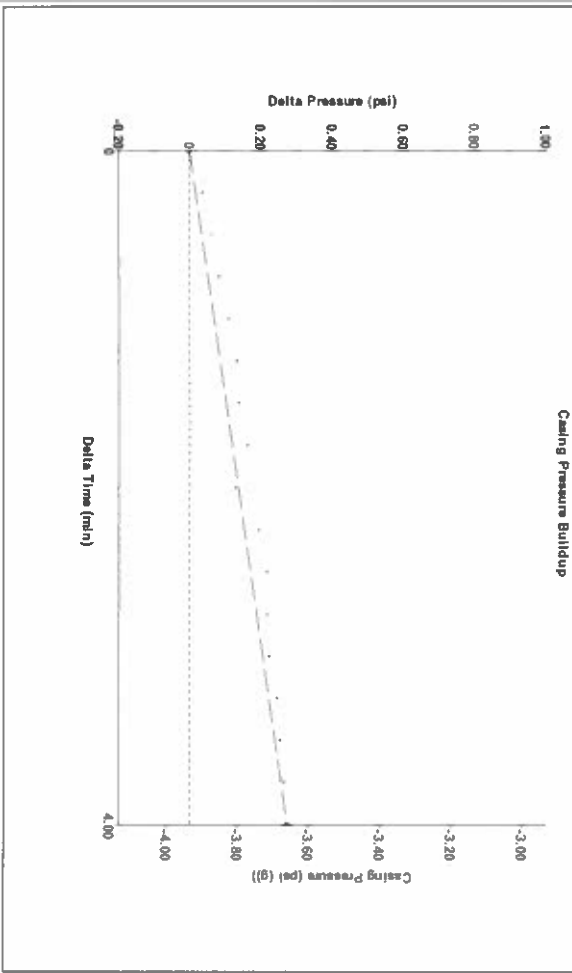
Analysis Method: Automatic

Group: Merit Energy Company-Ulysses Well: Schwein A-2 (acquired on: 08/26/25 15:01:35)

<b>Production</b>	<b>Current</b>	<b>Potential</b>	<b>Casing Pressure</b>	<b>Producing</b>
Oil	-*-	-*-	-3.9 psi (g)	Pump Intake
Water	-*-	-*-	0.274 psi	51.0 psi (g)
Gas	-*-	-*-	4.00 min	Producing BHP
				49.3 psi (g)
				Static BHP
				-*- psi (g)
<b>IPR Method</b>	<b>PBH/SBHP</b>	<b>Vogel</b>	<b>Gas/Liquid Interface Pressure</b>	<b>% Liquid</b>
		-*-	-3.2 psi (g)	93 %
<b>Production Efficiency</b>				
0.0				
<b>Oil</b>	<b>40 deg API</b>	<b>Liquid Level Depth</b>		
<b>Water</b>	<b>1.05 Sp.Gr.H2O</b>	<b>2734.76 ft</b>		
<b>Gas</b>	<b>0.73 Sp.Gr.AIR</b>	<b>Pump Intake Depth</b>		
		<b>2907.00 ft</b>		
		<b>Formation Depth</b>		
		<b>2902.00 ft</b>		
<b>Acoustic Velocity</b>	<b>1273.17 ft/s</b>			
<b>Formation Submergence</b>				
<b>Total Gaseous Liquid Column HT (TVD)</b>	<b>172 ft</b>			
<b>Equivalent Gas Free Liquid HT (TVD)</b>	<b>160 ft</b>			
<b>8/26/25</b>				

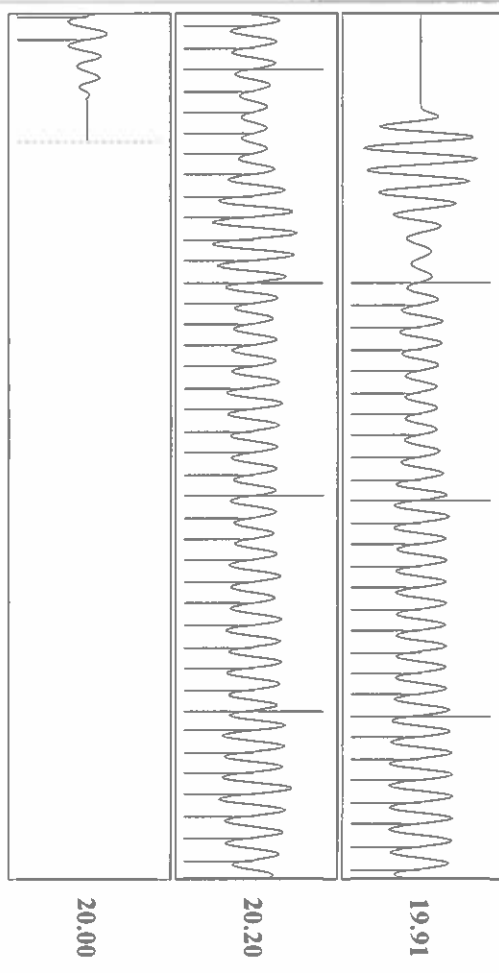


Group: Merit Energy Company-Ulysses Well: Schwein A-2 (acquired on: 08/26/25 15:01:35)



Change in Pressure: 0.27 psi  
 Change in Time: 4.00 min  
 PT18788 Range: 0 - 2 psi

Group: Merit Energy Company-Ulysses Well: Schwein A-2 (acquired on: 08/26/25 15:01:35)



Acoustic Velocity: 1273.17 ft/s  
 Joints Per Second: 20.0815 Jts/sec  
 Depth to liquid level: 2734.76 ft  
 Automatic Collar Count: Yes

Joints counted: 69  
 Joints to liquid level: 86,2701  
 Filter Width: 18.0401  
 Time to 1st Collar: 0.624

08/28/2025

Idania Medina  
Merit Energy Company, LLC  
13727 NOEL ROAD, SUITE 1200  
DALLAS, TX 75240-7362

Re: Temporary Abandonment  
API 15-067-20215-00-00  
SCHWEIN A 2  
SW/4 Sec.05-29S-36W  
Grant County, Kansas

Dear Idania Medina:

"Your temporary abandonment (TA) application for the well listed above has been approved. In accordance with K.A.R. 82-3-111 the TA status of this well will expire 08/28/2026.

- \* If you return this well to service or plug it, please notify the District Office.
- \* If you sell this well you are required to file a Transfer of Operator form, T-1.
- \* If the well will remain temporarily abandoned, you must submit a new TA application, CP-111, before 08/28/2026.

You may contact me at the number above if you have questions.

Very truly yours,

Michael Maier"