

Form	ACO1 - Well Completion
Operator	Griffin, Charles N.
Well Name	HOPE #3X
Doc ID	1731287

Tops

Name	Top	Datum
Heebner	3855	-1913
Brown Lime	4033	-2091
Lansing	4049	-2107
Stark	4363	-2421
B/KC	4448	-2506
Pawnee	4512	-2570
Cherokee	4551	-2609
Viola	4606	-2664
Simpson	4724	-2782

Form	ACO1 - Well Completion
Operator	Griffin, Charles N.
Well Name	HOPE #3X
Doc ID	1731287

Casing

Purpose Of String	Size Hole Drilled	Size Casing Set	Weight	Setting Depth	Type Of Cement	Number of Sacks Used	Type and Percent Additives
Conductor	17.5	13.375	54.5	46	common	90	2%Gel 3%CC
Surface	12.25	8.625	23	977	Common	425	2%Gel 3%CC
Production	7.875	5.5	15.5	4756	Pro C	175	2%Gel 10% Salt



GRIFFIN MANAGEMENT, LLC

126 S. Main, Pratt, KS 67124
620.672.9700

Scale 1:240 (5"=100') Imperial
Measured Depth Log

Well Name:	Hope #3X		
API:	15-007-24474		
Location:	T30S R15W Sec 16, S2 SW NE NE	Region:	Barber County
License Number:	33936	Drilling Completed:	6/21/2023
Spud Date:	6/15/2023		
Surface Coordinates:	Lat: 37.438573		
	Long: -98.96075		
Bottom Hole Coordinates:	Vertical Wellbore		
Ground Elevation (ft):	1937'	K.B. Elevation (ft):	1942'
Logged Interval (ft):	3800'	To: 4773'	Total Depth (ft): 4773'
Formation:	Ordovician (Simpson Shale) @ RTD		
Type of Drilling Fluid:	Mud-Co. Chemical Drispac - Displaced 2802'-2833'		

Printed by MudLog from WellSight Systems 1-800-447-1534 www.WellSight.com

OPERATOR

Company: Griffin Management, LLC
Address: 126 S. Main
Pratt, KS 67124-0347

GEOLOGIST

Name: Eli J. Felts
Company: Griffin Management, LLC
Address: efelts@griffinmgmt.com
316.765.4070

Drilling Report

Murfir Rig #104
Tool Pusher: James Mayfield
6/15/2023
Spud @ 12:15 PM
Set Conductor Casing @ 46' w/ 90 sxs

6/16/2023
Drilling @ 577'

6/17/2023
WOC @ 977'

6/18/2023
Drilling @ 2356'

6/19/2023
Drilling @ 3564'

6/20/2023
Drilling @ 4486'
RTD @ 6 PM - RTD 4722'

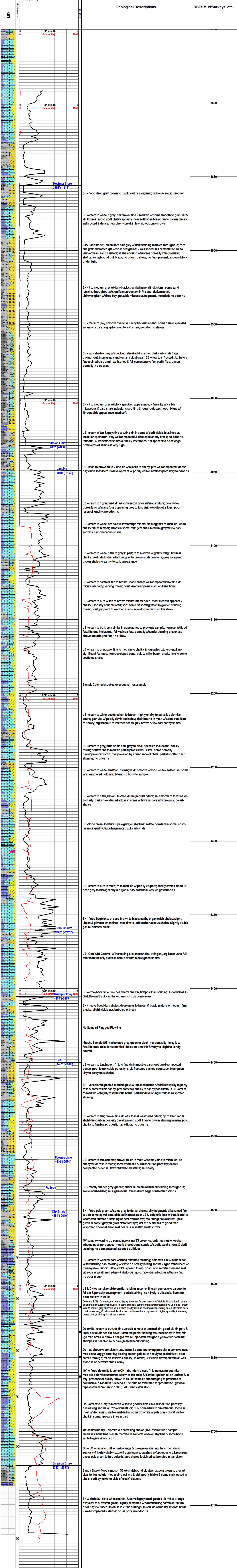
6/21/2023
Logging @ 4772'
Release Rig 11:45 PM

Problems

Original Location (Hope #3) Lost Circulation @ 798' & Plugged.
Skid rig 50' North - Spud Hope #3X

Pipe Setting

13.375" Set @ 46' w/ 90 sxs.
8.625" 23# Set @ 977' w/ 425 sxs (2-Stage)
5.5" 15.5# Set @ 4756' w/ 145 sxs



Griffin Management LLC

Hope 3X

6/12/23

Plug and abandon Hope 3 due to lost circulation at 800'

6/14/23

Move drilling rig off hole

Backfill cellar and cleaned up location

Dug a new cellar for Hope 3X

6/15/23

Rig drilling rig back up. Spud at 12:15 pm

Drilled 982' 12 ¼ hole. Lost circulation at 798'

Drilled to 982' without circulation. Run in 23 jts

8 5/8" 24# surface casing. 972'. Set casing at

977'. Pumped 250 sks common cement down

8 5/8". Pumped 175 sks 65/35 posmix cement

with 10% salt, 2% gel and 3% CC down backside

of 8 5/8". Finish cementing at 10:15 pm

6/16/23

Drilled out cement and drilling ahead.

6/21/23

Logging at 3:30 am

Start laying down pipe at 10:45 am

Start running casing at 2:25 pm

Run 123 jts 5 ½" 17# casing. Total 4761.09'

Set casing at 4756. Quality cemented with 175 sks Pro C cement with 10% salt, 2% gel and 5# Koseal. Plug down at 7:40 pm. Plug rathole with 30 sks cement. Released rig

7/12/23. (HOT)

RU CCWS (Les). RU Excel Wireline. Ran CBL/GR log and perforated 4650'- 4666' & 4634'- 4642' 3 spft. LTD 4754'

PU model R packer and pick up 141 jts 2 7/8" tubing. Set packer at 4586'. RU to swab.

IFL surface. Swabbed down and recovered 24 bbls. No oil or gas show. Shut in well.

Will do acid breakdown in morning.

7/13/23

TP 0# made 1 swab no fluid entry overnight
RU Tiger Chemical and acidized with 2000 gals
15% MCA acid, 8.5 bbls KCL spacer water and
27.5 bbls KCL flush water. Total 84 bbls used
Breakdown 1250#. Treated 3.25 bpm at 500#
ISIP 300# 15 mins 75#. RU to swab IFL surface
Swabbed down and recovered 48 bbls 20% OC
1st hr FL 4000' swabbed 20 bbls 40% OC
2nd hr FL 4000' swabbed 12 bbls 35% OC
Swabbed back 72 bbls. Released packer and
swabbed 56 bbls. Last swab recovered 500' 20%
OC. TOOH with packer and tubing. Shut in well
Plan to frack tomorrow

7/14/23

RU Gore N2 and frack with
4,145 bbls slick water
71,290# 20/40 mesh sand
8,111# Restin coated 20/40 mesh sand
1,472,000 scf N2

Fracked 60 bpm 2180#

ISIP 1664#. 15 mins 1360#

Shut in well and hooked up flowback line.

7/15/23

CP 900# open on 12/64" choke

1st hr CP 825# flowed 40 bbls

Choked back to 10/64"

2nd hr. CP 750# flowed 20 bbls

3rd hr. CP 450# flowed 12.5 bbls

4th hr. CP 325# flowed 15.0 bbls

5th hr. CP 300# flowed 20.0 bbls

6th hr. CP 350# flowed 20.0 bbls

7th hr. CP 300# flowed 17.5 bbls

8th hr. CP 275# flowed 17.5 bbls

9th hr. CP 275# flowed 10.0 bbls

10th hr CP 235# flowed 15.0 bbls

Flowed back 192.5 bbls.

Sli oil show at end of day

Left well open to tank overnight

7/16/23

9:00 am

CP 165# flowed 165 bbls in 12 hrs

11% OC

11:00 am

CP 145# flowed 20 bbls in 2 hrs 12% OC

Open choke to 19/64" choke

2:00 pm

CP 225# flowed 47.5 bbls in 3 hrs 14% OC

6:30 pm flowed 105 bbls in 4.5 hrs 17% OC

7:30 pm flowed 20 bbls in 1 hr 17% OC

Flowed 357.5 overnight and today

Total flowed back 550 bbls. Left well open to tank overnight.

7/17/23

7:00 am

CP 140# flowed 225 bbls in 11.5 hrs. 28% OC

1st hr CP 115# flowed 15.0 bbls 38% OC

2nd hr CP 95# flowed 12.5 bbls 46% OC

3rd hr CP 80# flowed 12.5 bbls 50% OC
4th hr CP 70# flowed 20.0 bbls 52% OC
5th hr CP 60# flowed 19.0 bbls 55% OC
6th hr CP 55# flowed 17.0 bbls 55% OC
7th hr CP 50# flowed 20.0 bbls 60% OC
8th hr CP 45# flowed 17.5 bbls 55% OC
9th hr CP 20# flowed 10.0 bbls 56% OC
10th hr CP 15# flowed 10.0 bbls 58% OC
Total flowed back today 153.5 bbls
Total recovered 928.5 bbls
Left well open to tank overnight.

7/18/23

Well dead. ND frack valve. TIH as follows

1) 2 7/8" mud anchor	15.10'
1) 2 7/8" seating nipple	1.10'
141) jts 2 7/8" tubing.	4586.15'

Bottom of tubing landed at 4602.35'

Note: run in 147 jts and tagged at 4750'

RU to run pump and rods as follows

1) 2 1/2" x 2" x 18' RWB insert pump

- 1) 2' x 7/8" pony rod
- 4) 1 1/4" sinker bars
- 177) 7/8" rods
- 1) 26' polished rod

RD CCWS

Set pumping unit and start pumping at 7:30 pm

QUALITY WELL SERVICE, INC.

8312

Federal Tax I.D. # 481187368

Home Office 30060 N. Hwy 281, Pratt, KS 67124

Mailing Address P.O. Box 468

Office 620-786-6992

Fax 620-672-3663

Todd's Cell 620-388-4967

Brady's Cell 620-727-6964

Date	6-15-23	Sec.	16	Twp.	30S	Range	15W	County	BARBER	State	Ks	On Location		Finish	
Lease	HOPE	Well No.	3x	Location											
Contractor	Martin Orla P.O. 104	Owner													
Type Job	Cond	To Quality Well Service, Inc. You are hereby requested to rent cementing equipment and furnish cementer and helper to assist owner or contractor to do work as listed.													
Hole Size	17 1/2	T.D.	46	Charge To											
Csg.	13.8 54.5 lb	Depth	46	Griffin											
Tbg. Size		Depth		Street											
Tool		Depth		City State											
Cement Left in Csg.		Shoe Joint	10	The above was done to satisfaction and supervision of owner agent or contractor.											
Meas Line		Displace	5 bbl	Cement Amount Ordered 250 sc (on mm)											
EQUIPMENT				2.1 GEL 3.1 CC 1/2" PS USED 90SC											
Pumptrk	8	No.		Common 90											
Bulktrk	10	No.		Poz. Mix											
Bulktrk		No.		Gel. 169 lbs											
Pickup		No.		Calcium 254 lbs											
JOB SERVICES & REMARKS				Hulls											
Rat Hole				Salt											
Mouse Hole				Flowseal 45 lbs											
Centralizers				Kol-Seal											
Baskets				Mud CLR 48											
D/V or Port Collar				CFL-117 or CD110 CAF 38											
Run 1st 13 3/8 54.5 lb csg SET @ 46'				Sand											
START CSG csg on Bottom				Handling 90											
Hook up to Csg BREAK CIRC W/IRG				Mileage 25/3750											
START Pumping H30				FLOAT EQUIPMENT											
START MIX: Pump 90 & Common				Guide Shoe											
2.1 GEL 3.1 CC 1/2" PS @ 14.8" / GAL				Centralizer											
START DISO				Baskets											
P/OH DOWN 5 bbl total				AFU Inserts											
CLOSE VALVE ON Csg				Float Shoe											
GOOD CIRC THRU JOB				Latch Down											
CIRC CMT TO PIT				SERVICE SUPV 1 EA											
				LMV 25											
				Pumptrk Charge Cond											
				Mileage 50											
				Tax											
				Discount											
				Total Charge											
X Signature															

8313

Brady's Cell 620-727-6964

Taylor Printing, Inc.

QUALITY WELL SERVICE, INC.

8314

Federal Tax I.D. # 481187368

Home Office 30060 N. Hwy 281, Pratt, KS 67124

Mailing Address P.O. Box 468

Office 620-786-6992

Fax 620-672-3663

Todd's Cell 620-388-4967

Brady's Cell 620-727-6964

Date	6-21-23	Sec.	16	Twp.	30S	Range	15W	County	Barber	State	Ks	On Location		Finish		
Lease	HOPE	Well No.	34	Location												
Contractor	Muefin Delg R.G. 104								Owner							
Type Job	5 1/2 LS								To Quality Well Service, Inc. You are hereby requested to rent cementing equipment and furnish cementer and helper to assist owner or contractor to do work as listed.							
Hole Size	7 7/8								T.D. 4773'							
Csg.	5 1/2								Depth 4758.09							
Tbg. Size									Charge To Griffin							
Tool									Street							
Cement Left in Csg.									Depth							
Meas Line									City State							
EQUIPMENT								The above was done to satisfaction and supervision of owner agent or contractor.								
Pumptrk	B	No.		Cement Amount Ordered 2055x Procl 2 1/2 GAL 10% SALT												
Bulktrk	D	No.		5 1/2x Kol Seal 6 1/2' C/A 25' C/A 25 1/2x PS												
Bulktrk		No.		Common 2055x												
Pickup		No.		Poz. Mix												
JOB SERVICES & REMARKS								Gel. 385 lbs								
Rat Hole	305x								Calcium							
Mouse Hole									Hulls							
Centralizers	1-2-3-4-5-6-7								Salt 129 lbs							
Baskets									Flowseal 51 lbs							
D/V or Port Collar	USED								Kol-Seal 1025 lbs							
Run 123 H's 5 1/2 17" CSG SETD 4756								Mud CLR 48 500 GAL								
START CSG CSG on Bottom TAG Day Ball								CFL-117 or CD110 CAF 38 116 lbs C/A								
Hook up to CSG? BREAK CIR W/ RIG								Sand 9 1/2 GAL 48 lbs C/A								
START Pumping 10 Bbls H2O 12 Bbls MIF 10 Bbls H2O								Handling 257								
START Plug R- Hole 305x								Mileage 25 / 6425								
START MIX Pump 175 x Procl CSG 1/4 8 1/2 GAL								FLOAT EQUIPMENT								
SHUT DOWN WASH UP & RELEASE 5 1/2 LD Plug								Guide Shoe H: M 1 EA								
START Disp W/ 2 1/2 KCL								Centralizer 7 EA								
LEFT PS 95 Pbls out 550'								Baskets								
Plug down 110.25 out 1500'								AFU Inserts								
PS up CSG 1700'								Float Shoe								
RELEASE HELD 1/2 Bbl Back								Latch Down 1 EA								
Good cir thru JOB								SERVICE SUP 1 EA								
THANK YOU								LMV 25								
PLEASE CALL AGAIN								Pumptrk Charge 25								
1000 WATE JACKSON North								Mileage 50								
X Signature								Tax								
								Discount								
								Total Charge								