

KANSAS CORPORATION COMMISSION
OIL & GAS CONSERVATION DIVISION

TEMPORARY ABANDONMENT WELL APPLICATION

OPERATOR: License# _____
 Name: _____
 Address 1: _____
 Address 2: _____
 City: _____ State: _____ Zip: _____ + _____
 Contact Person: _____
 Phone: (_____) _____
 Contact Person Email: _____
 Field Contact Person: _____
 Field Contact Person Phone: (_____) _____

API No. 15- _____
 Spot Description: _____
 _____ - _____ - _____ - _____ Sec. _____ Twp. _____ S. R. _____ E W
 _____ feet from N / S Line of Section
 _____ feet from E / W Line of Section
 GPS Location: Lat: _____, Long: _____
(e.g. xx.xxxxx) (e.g. -xxx.xxxxx)
 Datum: NAD27 NAD83 WGS84
 County: _____ Elevation: _____ GL KB
 Lease Name: _____ Well #: _____
 Well Type: (check one) Oil Gas OG WSW Other: _____
 SWD Permit #: _____ ENHR Permit #: _____
 Gas Storage Permit #: _____
 Spud Date: _____ Date Shut-In: _____

	Conductor	Surface	Production	Intermediate	Liner	Tubing
Size						
Setting Depth						
Amount of Cement						
Top of Cement						
Bottom of Cement						

Casing Fluid Level from Surface: _____ How Determined? _____ Date: _____
 Casing Squeeze(s): _____ to _____ w / _____ sacks of cement, _____ to _____ w / _____ sacks of cement. Date: _____
(top) (bottom) (top) (bottom)
 Do you have a valid Oil & Gas Lease? Yes No
 Depth and Type: Junk in Hole at _____ Tools in Hole at _____ Casing Leaks: Yes No Depth of casing leak(s): _____
(depth) (depth)
 Type Completion: ALT. I ALT. II Depth of: DV Tool: _____ w / _____ sacks of cement Port Collar: _____ w / _____ sack of cement
(depth) (depth)
 Packer Type: _____ Size: _____ Inch Set at: _____ Feet
 Total Depth: _____ Plug Back Depth: _____ Plug Back Method: _____

Geological Data:

Formation Name	Formation Top	Formation Base	Completion Information
1. _____	At: _____	to _____ Feet	Perforation Interval _____ to _____ Feet or Open Hole Interval _____ to _____ Feet
2. _____	At: _____	to _____ Feet	Perforation Interval _____ to _____ Feet or Open Hole Interval _____ to _____ Feet

UNDER PENALTY OF PERJURY I HEREBY ATTEST THAT THE INFORMATION CONTAINED HEREIN IS TRUE AND CORRECT TO THE BEST OF MY KNOWLEDGE

Submitted Electronically

Do NOT Write in This Space - KCC USE ONLY	Date Tested: _____	Results: _____	Date Plugged: _____	Date Repaired: _____	Date Put Back in Service: _____
	Review Completed by: _____ Comments: _____				
TA Approved: <input type="checkbox"/> Yes <input type="checkbox"/> Denied Date: _____					

Mail to the Appropriate KCC Conservation Office:

	KCC District Office #1 - 210 E. Frontview, Suite A, Dodge City, KS 67801	Phone 620.682.7933
	KCC District Office #2 - 3450 N. Rock Road, Building 600, Suite 601, Wichita, KS 67226	Phone 316.337.7400
	KCC District Office #3 - 137 E. 21st St., Chanute, KS 66720	Phone 620.902.6450
	KCC District Office #4 - 2301 E. 13th Street, Hays, KS 67601-2651	Phone 785.261.6250

General

Well ID Lanie 3408 1-32H
 Well Lanie 3408 1-32H
 Company SD
 Operator Kelly Snow
 Lease Name Lanie 3408 1-32H
 Elevation 0.00 ft
 Production Method Rod Pump

Comment

Surface Unit

Manufacturer - * -
 Unit Class Conventional
 Unit API Number - * -
 Measured Stroke Length - * - in
 Rotation CW
 Counter Balance Effect (Weights Level) - * - Klb
 Weight Of Counter Weights 2000 lb

Prime Mover

Motor Type Electric
 Rated HP - * - HP
 Run Time 24 hr/day
 MFG/Comment - * -

Electric Motor Parameters

Rated Full Load AMPS - * -
 Rated Full Load RPM - * -
 Synchronous RPM 1200
 Voltage - * -
 Hertz 60
 Phase 3
 Power Consumption 5
 Power Demand 8 \$/KW

Tubulars

Tubing OD 2.875 in
 Casing OD 7.000 in
 Average Joint Length 31.700 ft
 Anchor Depth 4574.00 ft
 Kelly Bushing 22.00 ft

Pump

Plunger Diameter - * - in
 Pump Intake Depth 4781.00 ft
 **Total Rod Length < Pump Depth

Polished Rod

Polished Rod Diameter - * - in

Rod String

	Top Taper	Taper 2	Taper 3	Taper 4	Taper 5	Taper 6
Rod Type	- * -	- * -	- * -	- * -	- * -	- * -
Rod Length	- * -	- * -	- * -	- * -	- * -	- * - ft
Rod Diameter	- * -	- * -	- * -	- * -	- * -	- * - in
Rod Weight	0.0	0.0	0.0	0.0	0.0	0.0 lb

Total Rod Length 0
 Total Rod Weight 0.00

Damp Up 0.04781
 Damp Down 0.04781

Conditions

Pressure

Static BHP 99.1 psi (g)
 Static BHP Method Acoustic
 Static BHP Date 08/08/2024
 Producing BHP 87.2 psi (g)
 Producing BHP Method Acoustic
 Producing BHP Date 08/13/2025
 Formation Depth 4781.00 ft

Production

Oil Production - * - BBL/D
 Water Production - * - BBL/D
 Gas Production - * - Mscf/D
 Production Date - * -

Temperatures

Surface Temperature 70 deg F
 Bottomhole Temperature 150 deg F

Surface Producing Pressures

Tubing Pressure - * - psi (g)
 Casing Pressure 29.9 psi (g)

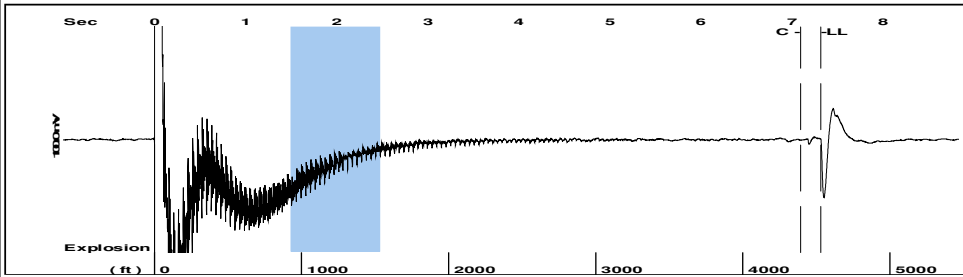
Fluid Properties

Oil API 40 deg.API
 Water Specific Gravity 1.05 Sp.Gr.H2O

Casing Pressure Buildup

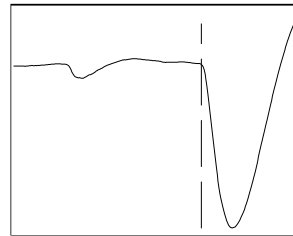
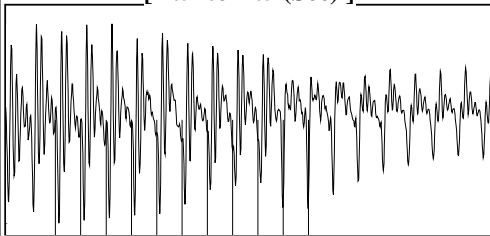
Change in Pressure -0.023 psi
 Over Change in Time 1.00 min

Group: MyWells Well: Lanie 3408 1-32H (acquired on: 08/13/25 05:18:43)



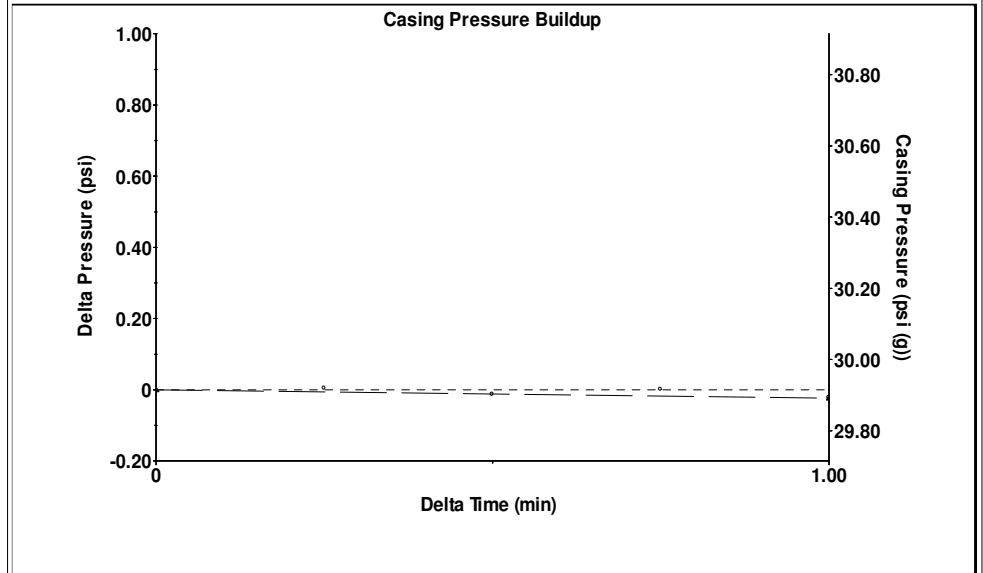
Filter Type High Pass Automatic Collar Count Yes Time 7.319 sec
 Manual Acoustic Veloc 1219.23 ft/s Manual JTS/sec 19.2308 Joints 142.899 Jts
 Depth 4529.89 ft

[1.5 to 2.5 (Sec)]



Analysis Method: Automatic

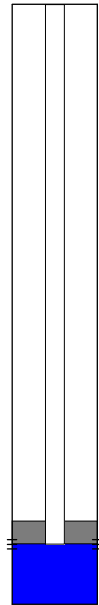
Group: MyWells Well: Lanie 3408 1-32H (acquired on: 08/13/25 05:18:43)



Change in Pressure -0.02 psi PT17591
 Change in Time 1.00 min Range 0 - ? psi

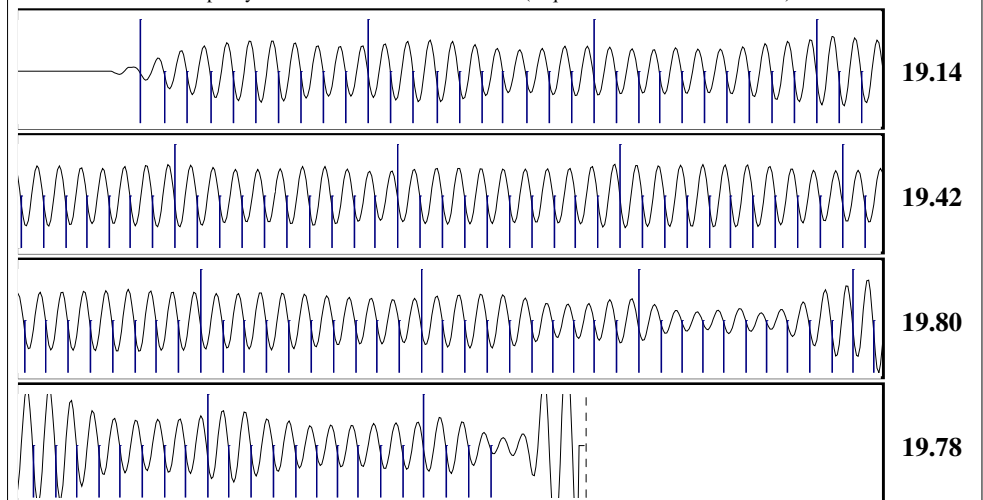
Group: MyWells Well: Lanie 3408 1-32H (acquired on: 08/13/25 05:18:43)

Production		Potential	Casing Pressure
Oil	- * -	- * - BBL/D	29.9 psi (g)
Water	- * -	- * - BBL/D	Casing Pressure Buildup
Gas	- * -	- * - Mscf/D	-0.023 psi
IPR Method		Vogel	1.00 min
PBHP/SBHP		- * -	Gas/Liquid Interface Pressure
Production Efficiency		0.0	35.3 psi (g)
Oil 40 deg.API		Liquid Level Depth	4529.89 ft
Water 1.05 Sp.Gr.H2O		Main Depth to Liq Level TVD	4442.13 ft
Gas 0.76 Sp.Gr.AIR		Pump Intake Depth	4781.00 ft
Acoustic Velocity 1237.84 ft/s		Formation Depth	4781.00 ft
		Formation Depth TVD	4596.05 ft



Static
 Oil Column Height
 MD 0 ft
 TVD 0 ft
 Water Column Height
 MD 229 ft
 TVD 140 ft
 Static BHP
 99.1 psi (g)

Group: MyWells Well: Lanie 3408 1-32H (acquired on: 08/13/25 05:18:43)



Acoustic Velocity	1237.84 ft/s	Joints counted	133
Joints Per Second	19.5244 jts/sec	Joints to liquid level	142.899
Depth to liquid level	4529.89 ft	Filter Width	17.2308 21.2308
Automatic Collar Count	Yes	Time to 1st Collar	0.284 7.096

Conservation Division
District Office No. 2
3450 N. Rock Road
Building 600, Suite 601
Wichita, KS 67226



Phone: 316-337-7400
<http://kcc.ks.gov/>

Andrew J. French, Chairperson
Dwight D. Keen, Commissioner
Annie Kuether, Commissioner

Laura Kelly, Governor

09/03/2025

Leah Medrana
SandRidge Exploration and Production LLC
1 E SHERIDAN AVE STE 500
OKLAHOMA CITY, OK 73104-2494

Re: Temporary Abandonment
API 15-077-21893-01-00
LANIE 3408 1-32H
SW/4 Sec.32-34S-08W
Harper County, Kansas

Dear Leah Medrana:

"Your temporary abandonment (TA) application for the well listed above has been approved. In accordance with K.A.R. 82-3-111 the TA status of this well will expire 09/03/2026.

- * If you return this well to service or plug it, please notify the District Office.
- * If you sell this well you are required to file a Transfer of Operator form, T-1.
- * If the well will remain temporarily abandoned, you must submit a new TA application, CP-111, before 09/03/2026.

You may contact me at the number above if you have questions.

Very truly yours,

Neil Lake, ECRS"