

KANSAS CORPORATION COMMISSION
OIL & GAS CONSERVATION DIVISION

TEMPORARY ABANDONMENT WELL APPLICATION

OPERATOR: License#
Name:
Address 1:
Address 2:
City: State: Zip:
Contact Person:
Phone:
Contact Person Email:
Field Contact Person:
Field Contact Person Phone:

API No. 15-
Spot Description:
Sec. Twp. S. R.
GPS Location: Lat: Long:
Datum: NAD27 NAD83 WGS84
County: Elevation:
Lease Name: Well #:
Well Type: Oil Gas OG WSW Other:
SWD Permit #: ENHR Permit #:
Gas Storage Permit #:
Spud Date: Date Shut-In:

Table with 7 columns: Conductor, Surface, Production, Intermediate, Liner, Tubing. Rows include Size, Setting Depth, Amount of Cement, Top of Cement, Bottom of Cement.

Casing Fluid Level from Surface: How Determined? Date:
Casing Squeeze(s): to w / sacks of cement, to w / sacks of cement. Date:
Do you have a valid Oil & Gas Lease? Yes No
Depth and Type: Junk in Hole at Tools in Hole at Casing Leaks: Yes No Depth of casing leak(s):
Type Completion: ALT. I ALT. II Depth of: DV Tool: w / sacks of cement Port Collar: w / sack of cement
Packer Type: Size: Inch Set at: Feet
Total Depth: Plug Back Depth: Plug Back Method:

Geological Data:

Table with 4 columns: Formation Name, Formation Top, Formation Base, Completion Information. Rows 1 and 2.

UNDER PENALTY OF PERJURY I HEREBY ATTEST THAT THE INFORMATION CONTAINED HEREIN IS TRUE AND CORRECT TO THE BEST OF MY KNOWLEDGE

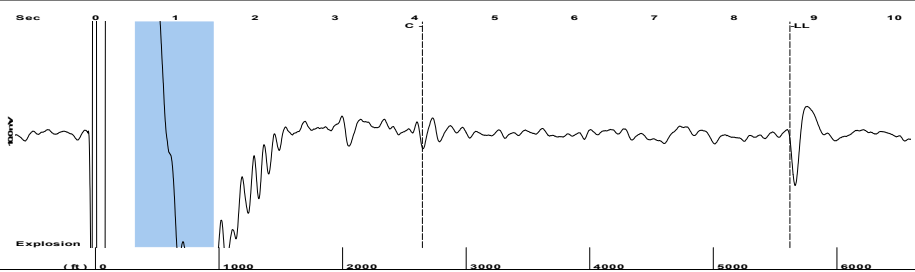
Submitted Electronically

Do NOT Write in This Space - KCC USE ONLY
Date Tested: Results: Date Plugged: Date Repaired: Date Put Back in Service:
Review Completed by: Comments:
TA Approved: Yes Denied Date:

Mail to the Appropriate KCC Conservation Office:

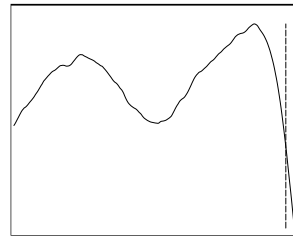
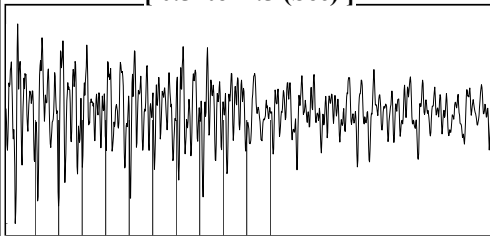
Table with 2 columns: Office Address, Phone. Rows for District Office #1, #2, #3, #4.

Group: MyWells Well: BARTH 3 (acquired on: 09/03/25 12:56:14)



Filter Type High Pass Automatic Collar Count Yes Time 8.7 sec
 Manual Acoustic Veloc 1312.63 ft/s Manual JTS/sec 20.7039 Joints 177.273 Jts
 Depth 5619.55 ft

[0.5 to 1.5 (Sec)]



Analysis Method: Automatic

Group: MyWells Well: BARTH 3 (acquired on: 09/03/25 12:56:14)

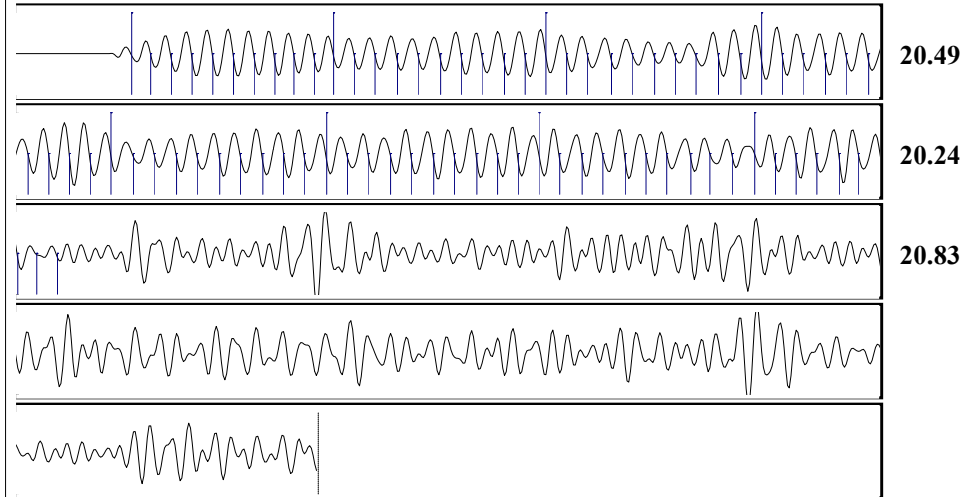


Change in Pressure 0.00 psi PT12098
 Range 0 - ? psi
 Change in Time 0.00 min

Group: MyWells Well: BARTH 3 (acquired on: 09/03/25 12:56:14)

Production		Potential		Casing Pressure		Producing	
Current				0.0	psi (g)		
Oil	- * -	- * -	BBL/D	Casing Pressure Buildup	- * -	psi	
Water	- * -	- * -	BBL/D		- * -	min	
Gas	- * -	- * -	Mscf/D	Gas/Liquid Interface Pressure	- * -	psi (g)	
IPR Method		Vogel		Liquid Level Depth		Annular Gas Flow	
PBHP/SBHP	- * -	- * -		5619.55	ft	- * -	Mscf/D
Production Efficiency	0.0			Pump Intake Depth	- * -	ft	% Liquid
Oil	40	deg.API		Formation Depth	5880.00	ft	100 %
Water	1.05	Sp.Gr.H2O					
Gas	0.72	Sp.Gr.AIR					
Acoustic Velocity		1291.85		Pump Intake		Producing BHP	
	ft/s			- * -	psi (g)	- * -	psi (g)
Formation Submergence				Static BHP			
Total Gaseous Liquid Column HT (TVD)	- * -	ft		- * -	psi (g)		
Equivalent Gas Free Liquid HT (TVD)	- * -	ft					
Acoustic Test							

Group: MyWells Well: BARTH 3 (acquired on: 09/03/25 12:56:14)



Acoustic Velocity	1291.85	ft/s	Joints counted	78
Joints Per Second	20.3762	jts/sec	Joints to liquid level	177.273
Depth to liquid level	5619.55	ft	Filter Width	18.7039
Automatic Collar Count	Yes		Time to 1st Collar	0.268
				4.096

Conservation Division
District Office No. 1
210 E. Frontview, Suite A
Dodge City, KS 67801



Phone: 620-682-7933
<http://kcc.ks.gov/>

Andrew J. French, Chairperson
Dwight D. Keen, Commissioner
Annie Kuether, Commissioner

Laura Kelly, Governor

09/04/2025

Jose Reyes
American Warrior, Inc.
PO BOX 399
GARDEN CITY, KS 67846-0399

Re: Temporary Abandonment
API 15-025-21215-00-00
BARTH 3
N/2 Sec.10-35S-22W
Clark County, Kansas

Dear Jose Reyes:

"Your temporary abandonment (TA) application for the well listed above has been approved. In accordance with K.A.R. 82-3-111 the TA status of this well will expire 09/04/2026.

- * If you return this well to service or plug it, please notify the District Office.
- * If you sell this well you are required to file a Transfer of Operator form, T-1.
- * If the well will remain temporarily abandoned, you must submit a new TA application, CP-111, before 09/04/2026.

You may contact me at the number above if you have questions.

Very truly yours,

Michael Maier"