

KANSAS CORPORATION COMMISSION  
OIL & GAS CONSERVATION DIVISION

TEMPORARY ABANDONMENT WELL APPLICATION

OPERATOR: License# \_\_\_\_\_  
 Name: \_\_\_\_\_  
 Address 1: \_\_\_\_\_  
 Address 2: \_\_\_\_\_  
 City: \_\_\_\_\_ State: \_\_\_\_\_ Zip: \_\_\_\_\_ + \_\_\_\_\_  
 Contact Person: \_\_\_\_\_  
 Phone: ( \_\_\_\_\_ ) \_\_\_\_\_  
 Contact Person Email: \_\_\_\_\_  
 Field Contact Person: \_\_\_\_\_  
 Field Contact Person Phone: ( \_\_\_\_\_ ) \_\_\_\_\_

API No. 15- \_\_\_\_\_  
 Spot Description: \_\_\_\_\_  
 \_\_\_\_\_ - \_\_\_\_\_ - \_\_\_\_\_ - \_\_\_\_\_ Sec. \_\_\_\_\_ Twp. \_\_\_\_\_ S. R. \_\_\_\_\_  E  W  
 \_\_\_\_\_ feet from  N /  S Line of Section  
 \_\_\_\_\_ feet from  E /  W Line of Section  
 GPS Location: Lat: \_\_\_\_\_, Long: \_\_\_\_\_  
(e.g. xx.xxxxx) (e.g. -xxx.xxxxx)  
 Datum:  NAD27  NAD83  WGS84  
 County: \_\_\_\_\_ Elevation: \_\_\_\_\_  GL  KB  
 Lease Name: \_\_\_\_\_ Well #: \_\_\_\_\_  
 Well Type: (check one)  Oil  Gas  OG  WSW  Other: \_\_\_\_\_  
 SWD Permit #: \_\_\_\_\_  ENHR Permit #: \_\_\_\_\_  
 Gas Storage Permit #: \_\_\_\_\_  
 Spud Date: \_\_\_\_\_ Date Shut-In: \_\_\_\_\_

|                  | Conductor | Surface | Production | Intermediate | Liner | Tubing |
|------------------|-----------|---------|------------|--------------|-------|--------|
| Size             |           |         |            |              |       |        |
| Setting Depth    |           |         |            |              |       |        |
| Amount of Cement |           |         |            |              |       |        |
| Top of Cement    |           |         |            |              |       |        |
| Bottom of Cement |           |         |            |              |       |        |

Casing Fluid Level from Surface: \_\_\_\_\_ How Determined? \_\_\_\_\_ Date: \_\_\_\_\_  
 Casing Squeeze(s): \_\_\_\_\_ to \_\_\_\_\_ w / \_\_\_\_\_ sacks of cement, \_\_\_\_\_ to \_\_\_\_\_ w / \_\_\_\_\_ sacks of cement. Date: \_\_\_\_\_  
(top) (bottom) (top) (bottom)  
 Do you have a valid Oil & Gas Lease?  Yes  No  
 Depth and Type:  Junk in Hole at \_\_\_\_\_  Tools in Hole at \_\_\_\_\_ Casing Leaks:  Yes  No Depth of casing leak(s): \_\_\_\_\_  
(depth) (depth)  
 Type Completion:  ALT. I  ALT. II Depth of:  DV Tool: \_\_\_\_\_ w / \_\_\_\_\_ sacks of cement  Port Collar: \_\_\_\_\_ w / \_\_\_\_\_ sack of cement  
(depth) (depth)  
 Packer Type: \_\_\_\_\_ Size: \_\_\_\_\_ Inch Set at: \_\_\_\_\_ Feet  
 Total Depth: \_\_\_\_\_ Plug Back Depth: \_\_\_\_\_ Plug Back Method: \_\_\_\_\_

**Geological Data:**

| Formation Name | Formation Top | Formation Base | Completion Information   |
|----------------|---------------|----------------|--|
| 1. _____       | At: _____     | to _____ Feet  | Perforation Interval _____ to _____ Feet or Open Hole Interval _____ to _____ Feet |
| 2. _____       | At: _____     | to _____ Feet  | Perforation Interval _____ to _____ Feet or Open Hole Interval _____ to _____ Feet |

UNDER PENALTY OF PERJURY I HEREBY ATTEST THAT THE INFORMATION CONTAINED HEREIN IS TRUE AND CORRECT TO THE BEST OF MY KNOWLEDGE

Submitted Electronically

|   |  |                |                     |                      |                                 |
|---|--|----------------|---------------------|----------------------|---------------------------------|
| <b>Do NOT Write in This Space - KCC USE ONLY</b>                                      | Date Tested: _____                         | Results: _____ | Date Plugged: _____ | Date Repaired: _____ | Date Put Back in Service: _____ |
|   | Review Completed by: _____ Comments: _____ |                |                     |                      |                                 |
| TA Approved: <input type="checkbox"/> Yes <input type="checkbox"/> Denied Date: _____ |  |                |                     |                      |                                 |

Mail to the Appropriate KCC Conservation Office:

|  |  |                    |
|--|--|--------------------|
|  | KCC District Office #1 - 210 E. Frontview, Suite A, Dodge City, KS 67801               | Phone 620.682.7933 |
|  | KCC District Office #2 - 3450 N. Rock Road, Building 600, Suite 601, Wichita, KS 67226 | Phone 316.337.7400 |
|  | KCC District Office #3 - 137 E. 21st St., Chanute, KS 66720                            | Phone 620.902.6450 |
|  | KCC District Office #4 - 2301 E. 13th Street, Hays, KS 67601-2651                      | Phone 785.261.6250 |

**Liquid Level**

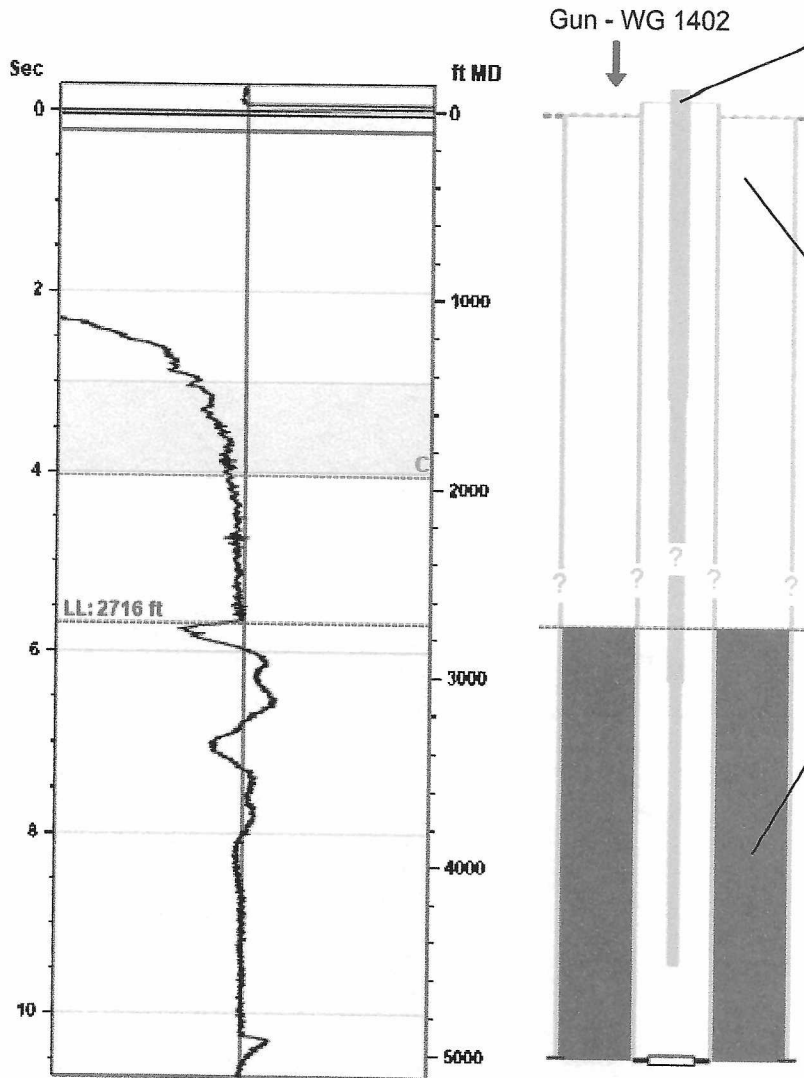
**2716 ft MD**

**Fluid Above Pump**

**\*\* ft TVD**

**Equivalent Gas Free Above Pump**

**\*\* ft TVD**



**Production**

|                      |          |           |        |
|----------------------|----------|-----------|--------|
| Date Entered         | 09/09/25 |           |        |
|                      | Current  | Potential |        |
| Oil                  | **       | **        | BBL/D  |
| Water                | **       | **        | BBL/D  |
| Gas                  | **       | **        | Mscf/D |
| IPR Method           | Vogel    |           |        |
| PBHP/SBHP            | 1.00     |           |        |
| Producing Efficiency | 0.00%    |           |        |

**Casing Pressure**

|          |             |
|----------|-------------|
| Pressure | 0.0 psi (g) |
|----------|-------------|

**Annular Gas Flow**

|          |           |
|----------|-----------|
| Gas Flow | ** Mscf/D |
|----------|-----------|

**Fluid Properties**

|                     |         |
|---------------------|---------|
| % Liquid Above Pump | 100.00% |
| % Liquid Below Pump | **      |

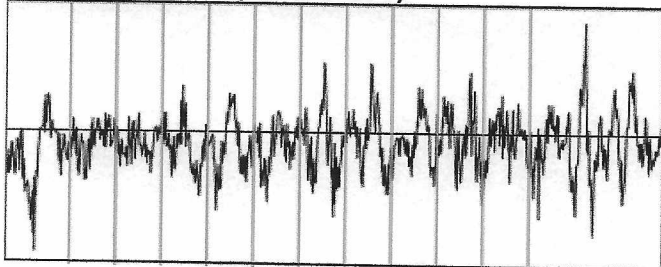
**Depths**

|                   |         |
|-------------------|---------|
| Pump Intake Depth | 5000 ft |
| Formation Depth   | 5000 ft |

**Wellbore Pressures**

|                   |    |
|-------------------|----|
| PIP               | ** |
| PBHP              | ** |
| SBHP              | ** |
| Gas/Liq Interface | ** |

**Collar Analysis (Automatic)**



|                           |               |
|---------------------------|---------------|
| Average Acoustic Velocity | 957 ft/s      |
| Average Joints Per Sec.   | 15.09 Jts/sec |
| Joints To Liquid          | 85.68 Jts     |

**Casing Pressure Buildup**

**No Pressure Acquired**

|  |                |
|--|----------------|
| Casing Pressure                              | 0.0 psi (g)    |
| Buildup                                      | 0.0 psi (g)    |
| Buildup Time                                 | 0 sec          |
| Gas Gravity from Collar Analysis (Automatic) | 1.0148 Air = 1 |

**Comments and Recommendations**

Acoustic Test

09/11/2025

Aaron Herrington  
TGT Petroleum Corporation  
PO BOX 75097  
WICHITA, KS 67275-0097

Re: Temporary Abandonment  
API 15-097-21345-00-00  
GARY WM 5  
SW/4 Sec.06-28S-18W  
Kiowa County, Kansas

Dear Aaron Herrington:

Your temporary abandonment (TA) application for the well listed above has been approved. In accordance with K.A.R. 82-3-111 the TA status of this well will expire 06/21/2026.

Your exception application expires on 06/21/2027.

- \* If you return this well to service or plug it, please notify the District Office.
- \* If you sell this well you are required to file a Transfer of Operator form, T-1.
- \* If the well will remain temporarily abandoned, you must submit a new TA application, CP-111, before 06/21/2026.

You may contact me at the number above if you have questions.

Very truly yours,

Michael Maier