

KANSAS CORPORATION COMMISSION  
OIL & GAS CONSERVATION DIVISION

TEMPORARY ABANDONMENT WELL APPLICATION

OPERATOR: License# \_\_\_\_\_  
 Name: \_\_\_\_\_  
 Address 1: \_\_\_\_\_  
 Address 2: \_\_\_\_\_  
 City: \_\_\_\_\_ State: \_\_\_\_\_ Zip: \_\_\_\_\_ + \_\_\_\_\_  
 Contact Person: \_\_\_\_\_  
 Phone: ( \_\_\_\_\_ ) \_\_\_\_\_  
 Contact Person Email: \_\_\_\_\_  
 Field Contact Person: \_\_\_\_\_  
 Field Contact Person Phone: ( \_\_\_\_\_ ) \_\_\_\_\_

API No. 15- \_\_\_\_\_  
 Spot Description: \_\_\_\_\_  
 \_\_\_\_\_ - \_\_\_\_\_ - \_\_\_\_\_ - \_\_\_\_\_ Sec. \_\_\_\_\_ Twp. \_\_\_\_\_ S. R. \_\_\_\_\_  E  W  
 \_\_\_\_\_ feet from  N /  S Line of Section  
 \_\_\_\_\_ feet from  E /  W Line of Section  
 GPS Location: Lat: \_\_\_\_\_, Long: \_\_\_\_\_  
(e.g. xx.xxxxx) (e.g. -xxx.xxxxx)  
 Datum:  NAD27  NAD83  WGS84  
 County: \_\_\_\_\_ Elevation: \_\_\_\_\_  GL  KB  
 Lease Name: \_\_\_\_\_ Well #: \_\_\_\_\_  
 Well Type: (check one)  Oil  Gas  OG  WSW  Other: \_\_\_\_\_  
 SWD Permit #: \_\_\_\_\_  ENHR Permit #: \_\_\_\_\_  
 Gas Storage Permit #: \_\_\_\_\_  
 Spud Date: \_\_\_\_\_ Date Shut-In: \_\_\_\_\_

|                  | Conductor | Surface | Production | Intermediate | Liner | Tubing |
|------------------|-----------|---------|------------|--------------|-------|--------|
| Size             |           |         |            |              |       |        |
| Setting Depth    |           |         |            |              |       |        |
| Amount of Cement |           |         |            |              |       |        |
| Top of Cement    |           |         |            |              |       |        |
| Bottom of Cement |           |         |            |              |       |        |

Casing Fluid Level from Surface: \_\_\_\_\_ How Determined? \_\_\_\_\_ Date: \_\_\_\_\_  
 Casing Squeeze(s): \_\_\_\_\_ to \_\_\_\_\_ w / \_\_\_\_\_ sacks of cement, \_\_\_\_\_ to \_\_\_\_\_ w / \_\_\_\_\_ sacks of cement. Date: \_\_\_\_\_  
(top) (bottom) (top) (bottom)  
 Do you have a valid Oil & Gas Lease?  Yes  No  
 Depth and Type:  Junk in Hole at \_\_\_\_\_  Tools in Hole at \_\_\_\_\_ Casing Leaks:  Yes  No Depth of casing leak(s): \_\_\_\_\_  
(depth) (depth)  
 Type Completion:  ALT. I  ALT. II Depth of:  DV Tool: \_\_\_\_\_ w / \_\_\_\_\_ sacks of cement  Port Collar: \_\_\_\_\_ w / \_\_\_\_\_ sack of cement  
(depth) (depth)  
 Packer Type: \_\_\_\_\_ Size: \_\_\_\_\_ Inch Set at: \_\_\_\_\_ Feet  
 Total Depth: \_\_\_\_\_ Plug Back Depth: \_\_\_\_\_ Plug Back Method: \_\_\_\_\_

**Geological Data:**

| Formation Name | Formation Top | Formation Base | Completion Information   |
|----------------|---------------|----------------|--|
| 1. _____       | At: _____     | to _____ Feet  | Perforation Interval _____ to _____ Feet or Open Hole Interval _____ to _____ Feet |
| 2. _____       | At: _____     | to _____ Feet  | Perforation Interval _____ to _____ Feet or Open Hole Interval _____ to _____ Feet |

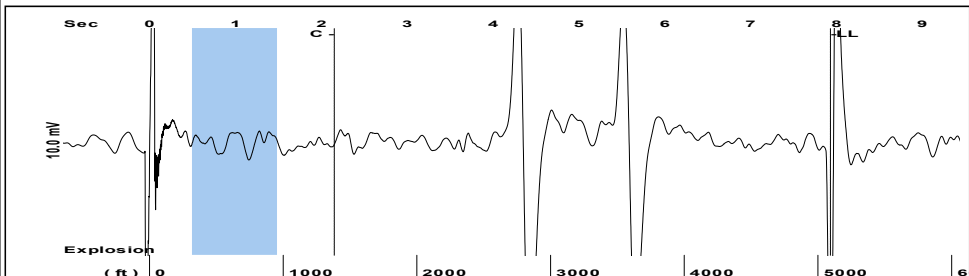
UNDER PENALTY OF PERJURY I HEREBY ATTEST THAT THE INFORMATION CONTAINED HEREIN IS TRUE AND CORRECT TO THE BEST OF MY KNOWLEDGE

Submitted Electronically

|   |  |                |                     |                      |                                 |
|---|--|----------------|---------------------|----------------------|---------------------------------|
| <b>Do NOT Write in This Space - KCC USE ONLY</b>                                      | Date Tested: _____                         | Results: _____ | Date Plugged: _____ | Date Repaired: _____ | Date Put Back in Service: _____ |
|   | Review Completed by: _____ Comments: _____ |                |                     |                      |                                 |
| TA Approved: <input type="checkbox"/> Yes <input type="checkbox"/> Denied Date: _____ |  |                |                     |                      |                                 |

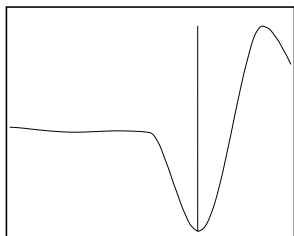
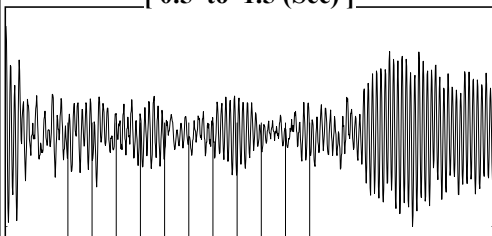
Mail to the Appropriate KCC Conservation Office:

|  |  |                    |
|--|--|--------------------|
|  | KCC District Office #1 - 210 E. Frontview, Suite A, Dodge City, KS 67801               | Phone 620.682.7933 |
|  | KCC District Office #2 - 3450 N. Rock Road, Building 600, Suite 601, Wichita, KS 67226 | Phone 316.337.7400 |
|  | KCC District Office #3 - 137 E. 21st St., Chanute, KS 66720                            | Phone 620.902.6450 |
|  | KCC District Office #4 - 2301 E. 13th Street, Hays, KS 67601-2651                      | Phone 785.261.6250 |

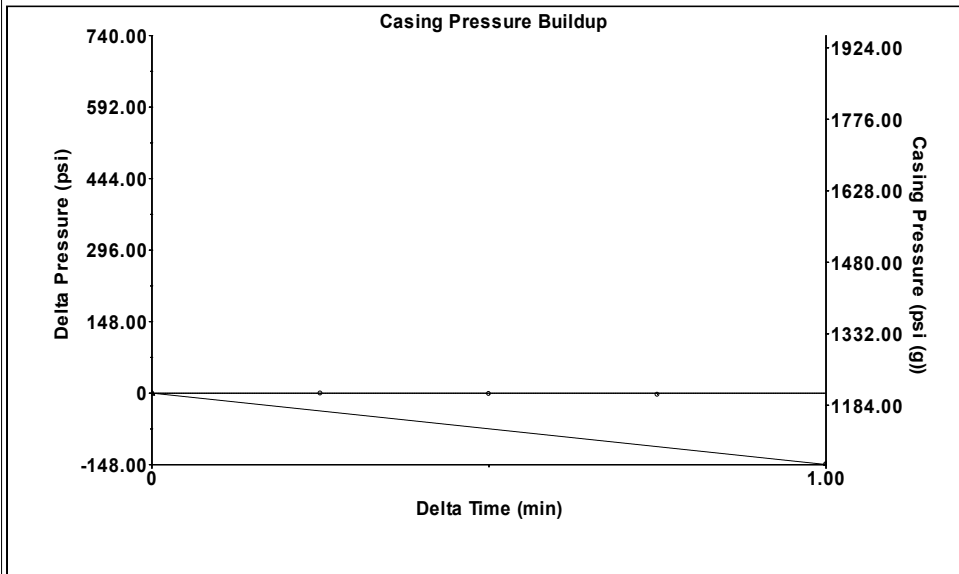


Filter Type High Pass Automatic Collar Count Yes Time 7.932 sec  
Manual Acoustic Velo 1278.23 ft/s Manual JTS/sec 20.1613 Joints 160.67 Jts  
Depth 5093.22 ft

[ 0.5 to 1.5 (Sec) ]

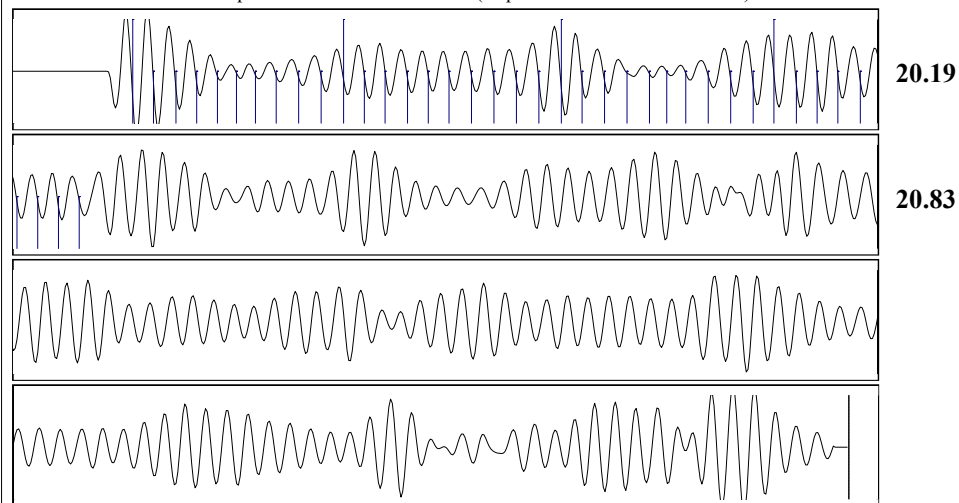


Analysis Method: Automatic



Change in Pressure -147.84 psi PT 14970  
Change in Time 1.00 min Range 0 - ? psi

|                                      |             |                               |                  |
|--------------------------------------|-------------|-------------------------------|------------------|
| Production Current                   | Potential   | Casing Pressure               | Producing        |
| Oil - *-                             | - *- BBL/D  | 1209.1 psi (g)                |                  |
| Water - *-                           | - *- BBL/D  | Casing Pressure Buildup       | Annular Gas Flow |
| Gas - *-                             | - *- Mscf/D | -147.8 psi                    | - *- Mscf/D      |
|                                      |             | 1.00 min                      | % Liquid         |
| IPR Method                           | Vogel       | Gas/Liquid Interface Pressure | 100 %            |
| PBHP/SBHP                            | - *-        | 1380.9 psi (g)                |                  |
| Production Efficiency                | 0.0         | Liquid Level Depth            |                  |
|                                      |             | 5093.22 ft                    |                  |
| Oil 40 deg.API                       |             | Pump Intake Depth             |                  |
| Water 1.05 Sp.Gr.H2O                 |             | - *- ft                       |                  |
| Gas 0.65 Sp.Gr.AIR                   |             | Formation Depth               |                  |
| Acoustic Velocity 1284.22 ft/s       |             | 5430.00 ft                    |                  |
| Formation Submergence                |             | Pump Intake                   |                  |
| Total Gaseous Liquid Column HT (TVD) | 337 ft      | - *- psi (g)                  |                  |
| Equivalent Gas Free Liquid HT (TVD)  | 337 ft      | Producing BHP                 |                  |
| Acoustic Test                        |             | 1534.0 psi (g)                |                  |
|                                      |             | Static BHP                    |                  |
|                                      |             | 502.3 psi (g)                 |                  |



Acoustic Velocity 1284.22 ft/s Joints counted 38  
Joints Per Second 20.2559 jts/sec Joints to liquid level 160.67  
Depth to liquid level 5093.22 ft Filter Width 18.1613 22.1613  
Automatic Collar Count Yes Time to 1st Collar 0.276 2.152

10/09/2025

Justin R Prater  
StrataKan Exploration, LLC  
100 S MAIN ST  
PLAINVILLE, KS 67663-2234

Re: Temporary Abandonment  
API 15-025-10098-00-00  
HARPER RANCH JC2  
SW/4 Sec.02-34S-21W  
Clark County, Kansas

Dear Justin R Prater:

"Your temporary abandonment (TA) application for the well listed above has been approved. In accordance with K.A.R. 82-3-111 the TA status of this well will expire 10/09/2026.

- \* If you return this well to service or plug it, please notify the District Office.
- \* If you sell this well you are required to file a Transfer of Operator form, T-1.
- \* If the well will remain temporarily abandoned, you must submit a new TA application, CP-111, before 10/09/2026.

You may contact me at the number above if you have questions.

Very truly yours,

Michael Maier"