

KANSAS CORPORATION COMMISSION
OIL & GAS CONSERVATION DIVISION

TEMPORARY ABANDONMENT WELL APPLICATION

OPERATOR: License#
Name:
Address 1:
Address 2:
City: State: Zip:
Contact Person:
Phone:
Contact Person Email:
Field Contact Person:
Field Contact Person Phone:

API No. 15-
Spot Description:
Sec. Twp. S. R.
GPS Location: Lat: Long:
Datum: NAD27 NAD83 WGS84
County: Elevation:
Lease Name: Well #:
Well Type: Oil Gas OG WSW Other:
SWD Permit #: ENHR Permit #:
Gas Storage Permit #:
Spud Date: Date Shut-In:

Table with 7 columns: Conductor, Surface, Production, Intermediate, Liner, Tubing. Rows include Size, Setting Depth, Amount of Cement, Top of Cement, Bottom of Cement.

Casing Fluid Level from Surface: How Determined? Date:
Casing Squeeze(s): to w / sacks of cement, to w / sacks of cement. Date:
Do you have a valid Oil & Gas Lease? Yes No
Depth and Type: Junk in Hole at Tools in Hole at Casing Leaks: Yes No Depth of casing leak(s):
Type Completion: ALT. I ALT. II Depth of: DV Tool: w / sacks of cement Port Collar: w / sack of cement
Packer Type: Size: Inch Set at: Feet
Total Depth: Plug Back Depth: Plug Back Method:

Geological Data:

Table with 4 columns: Formation Name, Formation Top, Formation Base, Completion Information. Rows 1 and 2.

UNDER PENALTY OF PERJURY I HEREBY ATTEST THAT THE INFORMATION CONTAINED HEREIN IS TRUE AND CORRECT TO THE BEST OF MY KNOWLEDGE

Submitted Electronically

Do NOT Write in This Space - KCC USE ONLY
Date Tested: Results: Date Plugged: Date Repaired: Date Put Back in Service:
Review Completed by: Comments:
TA Approved: Yes Denied Date:

Mail to the Appropriate KCC Conservation Office:

Table with 2 columns: Office Address, Phone. Rows for District Office #1, #2, #3, #4.



General

Well ID Rose 3408 2-31H
 Well Rose 3408 2-31H
 Company SD
 Operator Kelly Snow
 Lease Name Rose 3408 2-31H
 Elevation 0.00 ft
 Production Method Electrical Submersible Pump

Comment

Tubulars

Tubing OD 2.875 in
 Average Joint Length 31.700 ft
 Sliding Sleeve - * - ft
 Casing OD 7.000 in
 Liner OD - * - in
 Top of Liner - * - ft
 PBTD - * - ft
 Kelly Bushing 19.00 ft

Pump Assembly

Installation Date - * -
 Pump Intake Depth 5256.00 ft
 PIP Gage - * - ft

Gas Separator

Gas Separator Not Used
 Tubing Discharge Temp - * - deg F

Pump Configuration

	Top Pump	Pump 2	Pump 3	Pump 4	Pump 5
Pump Manufacturer	- * -	- * -	- * -	- * -	- * -
Pump Description/Series	- * -	- * -	- * -	- * -	- * -
Serial Number	- * -	- * -	- * -	- * -	- * -
Stage Count	0	0	0	0	0
Pump Housing	- * -	- * -	- * -	- * -	- * -

Total Length of Pump Assembly - * - ft
 Shroud is Not Used

Electric Equipment

Control Panel - * -
 Variable Frequency is Not Used
 Overload Set Point - * -
 Underload Set Point - * -
 Overvoltage Set Point - * -
 Undervoltage Set Point - * -
 Frequency - * -
 Pump Up Time - * -

Cable Data

Round Cable Type - * -
 Round Cable Length - * - ft
 Flat Cable Type - * -
 Flat Cable Length - * - ft

Electrical Cost

Cost Per kW-Hour - * -
 Cost Per kW - * -

Motor Assembly Description

	Top Motor	Motor 2	Motor 3	Motor 4
Manufacturer	- * -	- * -	- * -	- * -
Series	- * -	- * -	- * -	- * -
Type	- * -	- * -	- * -	- * -
HP	- * -	- * -	- * -	- * -
Volts/Amps	- * -	- * -	- * -	- * -
Total Length of Motor Assembly	- * - ft		Installation Date	- * -

Electrical Parameters

AMPS		VOLTS	
A Input	- * -	BA Input	- * -
B Input	- * -	CB Input	- * -
C Input	- * -	AC Input	- * -
		A-gnd	- * -
		B-gnd	- * -
		C-gnd	- * -
Kilowatt	- * -	Power Factor	- * -
		Date and Time of Measurement	- * -

Conditions

Pressure

Static BHP 118.4 psi (g)
 Static BHP Method Acoustic
 Static BHP Date 11/17/2025
 Producing BHP 118.4 psi (g)
 Producing BHP Method Acoustic
 Producing BHP Date 11/17/2025
 Formation Depth 5256.00 ft

Production

Oil Production - * - BBL/D
 Water Production - * - BBL/D
 Gas Production - * - Mscf/D
 Production Date - * -

Temperatures

Surface Temperature 70 deg F
 Bottomhole Temperature 150 deg F

Surface Producing Pressures

Tubing Pressure - * - psi (g)
 Casing Pressure 103.3 psi (g)

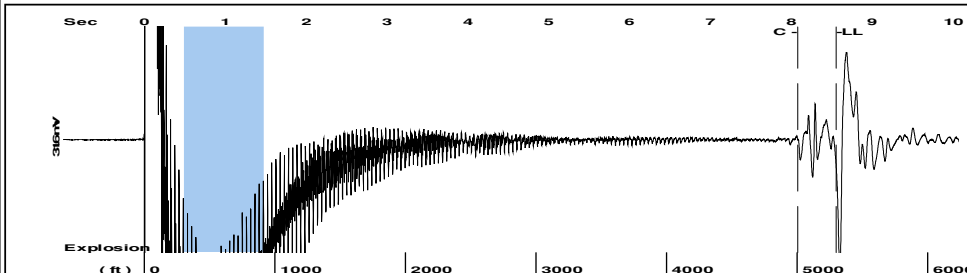
Fluid Properties

Oil API 40 deg API
 Water Specific Gravity 1.05 Sp.Gr.H2O

Casing Pressure Buildup

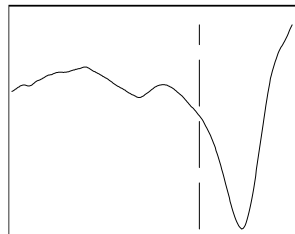
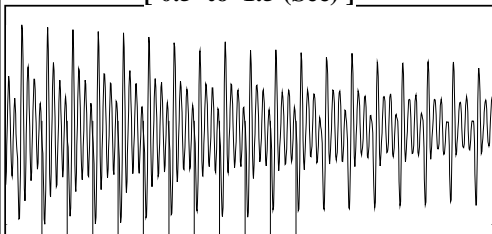
Change in Pressure -0.014 psi
 Over Change in Time 1.00 min

Group: MyWells Well: Rose 3408 2-31H (acquired on: 11/17/25 06:21:16)



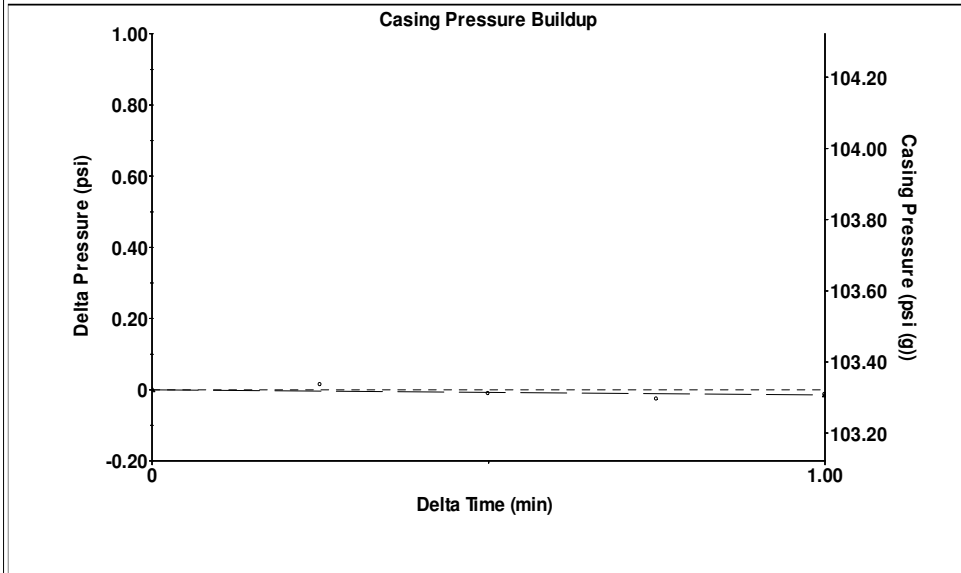
Filter Type High Pass Automatic Collar Count Yes Time 8.557 sec
 Manual Acoustic Veloc 1214.56 ft/s Manual JTS/sec 19.1571 Joints 167.18 Jts
 Depth 5299.62 ft

[0.5 to 1.5 (Sec)]



Analysis Method: Automatic

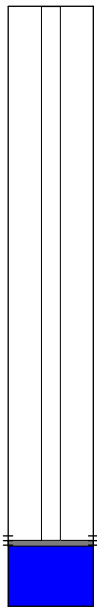
Group: MyWells Well: Rose 3408 2-31H (acquired on: 11/17/25 06:21:16)



Change in Pressure -0.01 psi PT17591
 Change in Time 1.00 min Range 0 - ? psi

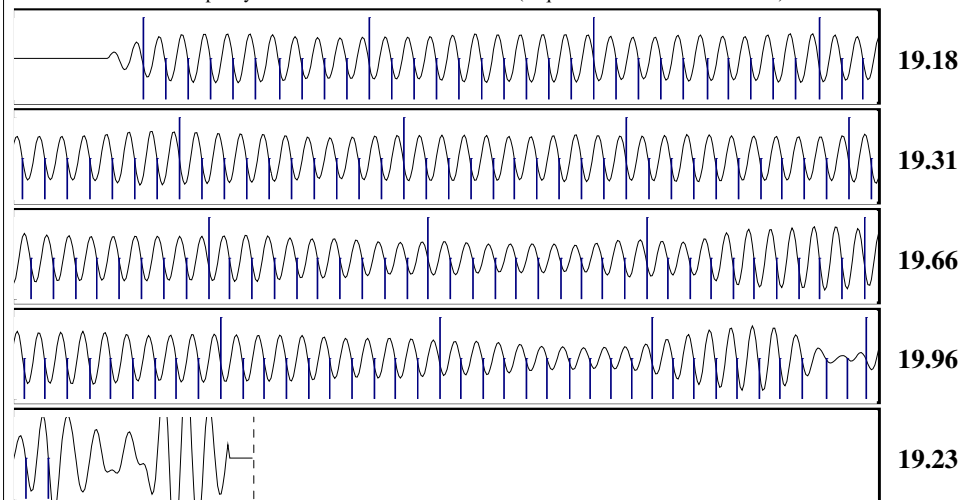
Group: MyWells Well: Rose 3408 2-31H (acquired on: 11/17/25 06:21:16)

Production		Potential	Casing Pressure
Oil	- * -	- * - BBL/D	103.3 psi (g)
Water	- * -	- * - BBL/D	Casing Pressure Buildup
Gas	- * -	- * - Mscf/D	-0.014 psi
			1.00 min
IPR Method		Vogel	Gas/Liquid Interface Pressure
PBHP/SBHP		- * -	118.5 psi (g)
Production Efficiency		0.0	
Oil	40 deg.API		Liquid Level Depth
Water	1.05 Sp.Gr.H2O		5299.62 ft
Gas	0.75 Sp.Gr.AIR		Main Depth to Liq Level TVD
			4740.16 ft
Acoustic Velocity	1238.66 ft/s		Pump Intake Depth
			5256.00 ft
			Formation Depth
			5256.00 ft
			Formation Depth TVD
			4729.50 ft



Static
 Oil Column Height
 MD 0 ft
 TVD 0 ft
 Water Column Height
 MD - * - ft
 TVD - * - ft
 Static BHP
 118.4 psi (g)

Group: MyWells Well: Rose 3408 2-31H (acquired on: 11/17/25 06:21:16)



Acoustic Velocity	1238.66 ft/s	Joints counted	152
Joints Per Second	19.5373 jts/sec	Joints to liquid level	167.18
Depth to liquid level	5299.62 ft	Filter Width	17.1571 21.1571
Automatic Collar Count	Yes	Time to 1st Collar	0.3 8.08

Conservation Division
District Office No. 2
3450 N. Rock Road
Building 600, Suite 601
Wichita, KS 67226



Phone: 316-337-7400
<http://kcc.ks.gov/>

Andrew J. French, Chairperson
Dwight D. Keen, Commissioner
Annie Kuether, Commissioner

Laura Kelly, Governor

11/24/2025

Leah Medrana
SandRidge Exploration and Production LLC
1 E SHERIDAN AVE STE 500
OKLAHOMA CITY, OK 73104-2494

Re: Temporary Abandonment
API 15-077-22056-01-00
ROSE 3408 2-31H
SE/4 Sec.31-34S-08W
Harper County, Kansas

Dear Leah Medrana:

"Your temporary abandonment (TA) application for the well listed above has been approved. In accordance with K.A.R. 82-3-111 the TA status of this well will expire 11/24/2026.

- * If you return this well to service or plug it, please notify the District Office.
- * If you sell this well you are required to file a Transfer of Operator form, T-1.
- * If the well will remain temporarily abandoned, you must submit a new TA application, CP-111, before 11/24/2026.

You may contact me at the number above if you have questions.

Very truly yours,

Neil Lake - ECRS"