

KANSAS CORPORATION COMMISSION
OIL & GAS CONSERVATION DIVISION

TEMPORARY ABANDONMENT WELL APPLICATION

OPERATOR: License#
Name:
Address 1:
Address 2:
City: State: Zip:
Contact Person:
Phone:
Contact Person Email:
Field Contact Person:
Field Contact Person Phone:

API No. 15-
Spot Description:
Sec. Twp. S. R.
feet from N / S Line of Section
feet from E / W Line of Section
GPS Location: Lat: , Long:
Datum: NAD27 NAD83 WGS84
County: Elevation: GL KB
Lease Name: Well #:
Well Type: (check one) Oil Gas OG WSW Other:
SWD Permit #: ENHR Permit #:
Gas Storage Permit #:
Spud Date: Date Shut-In:

Table with 7 columns: Conductor, Surface, Production, Intermediate, Liner, Tubing. Rows include Size, Setting Depth, Amount of Cement, Top of Cement, Bottom of Cement.

Casing Fluid Level from Surface: How Determined? Date:
Casing Squeeze(s): to w / sacks of cement, to w / sacks of cement. Date:
Do you have a valid Oil & Gas Lease? Yes No
Depth and Type: Junk in Hole at Tools in Hole at Casing Leaks: Yes No Depth of casing leak(s):
Type Completion: ALT. I ALT. II Depth of: DV Tool: w / sacks of cement Port Collar: w / sack of cement
Packer Type: Size: Inch Set at: Feet
Total Depth: Plug Back Depth: Plug Back Method:

Geological Data:

Table with 4 columns: Formation Name, Formation Top, Formation Base, Completion Information. Rows 1 and 2.

UNDER PENALTY OF PERJURY I HEREBY ATTEST THAT THE INFORMATION CONTAINED HEREIN IS TRUE AND CORRECT TO THE BEST OF MY KNOWLEDGE

Submitted Electronically

Do NOT Write in This Space - KCC USE ONLY
Date Tested: Results: Date Plugged: Date Repaired: Date Put Back in Service:
Review Completed by: Comments:
TA Approved: Yes Denied Date:

Mail to the Appropriate KCC Conservation Office:

Table with 3 columns: District Office, Address, Phone. Rows for District Office #1, #2, #3, #4.

Liquid Level

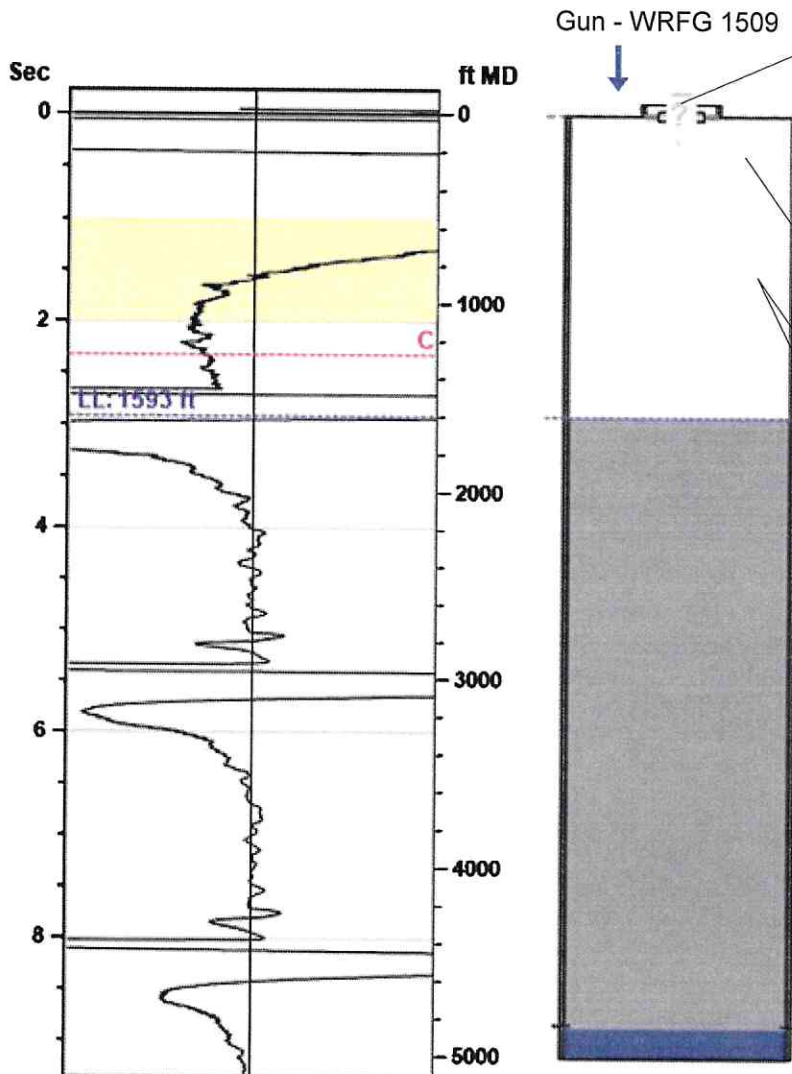
1593 ft MD

Fluid Above Pump

3249 ft TVD

Equivalent Gas Free Above Pump

3249 ft TVD



Production

Date Entered 12/03/25

	Current	Potential	
Oil	**	**	BBL/D
Water	**	**	BBL/D
Gas	**	**	Mscf/D

IPR Method Vogel
 PBHP/SBHP -0.00
 Producing Efficiency 0.00%

Casing Pressure

Pressure -0.6 psi (g)

Annular Gas Flow

Gas Flow 0.0 Mscf/D

Fluid Properties

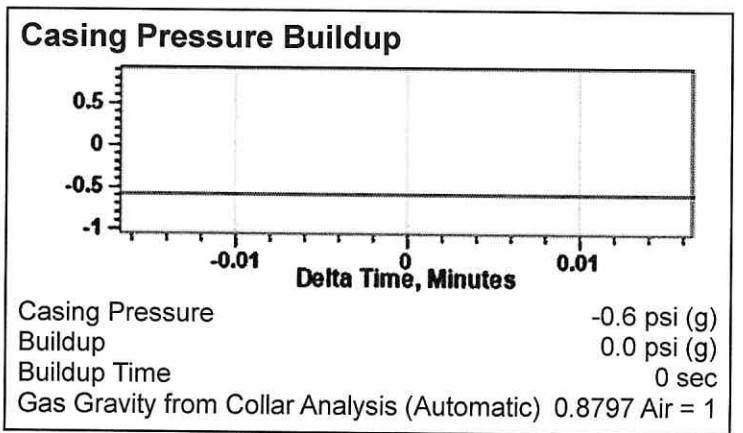
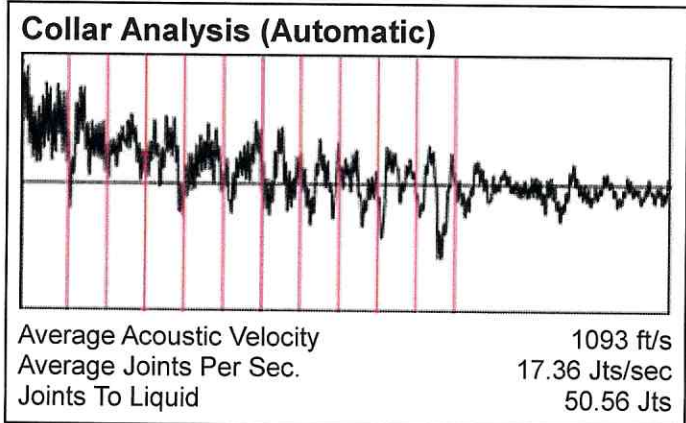
% Liquid Above Pump 100.00%
 % Liquid Below Pump **

Depths

Pump Intake Depth 0 ft
 Formation Depth 4842 ft

Wellbore Pressures

PIP **
 PBHP 1063.0 psi (g)
 SBHP **
 Gas/Liq Interface 0.1 psi (g)



Comments and Recommendations

Echometer Company
 5001 Ditto Lane
 Wichita Falls, TX 76302
 (940) 767-4334
 info@echometer.com

Conservation Division
District Office No. 1
210 E. Frontview, Suite A
Dodge City, KS 67801



Phone: 620-682-7933
<http://kcc.ks.gov/>

Andrew J. French, Chairperson
Dwight D. Keen, Commissioner
Annie Kuether, Commissioner

Laura Kelly, Governor

12/04/2025

Tyler Bell
HG Oil Holdings, LLC
PO BOX 97
PLAINVILLE, KS 67663-0097

Re: Temporary Abandonment
API 15-055-20943-00-00
CARR 2-4
NE/4 Sec.02-23S-31W
Finney County, Kansas

Dear Tyler Bell:

"Your temporary abandonment (TA) application for the well listed above has been approved. In accordance with K.A.R. 82-3-111 the TA status of this well will expire 12/04/2026.

- * If you return this well to service or plug it, please notify the District Office.
- * If you sell this well you are required to file a Transfer of Operator form, T-1.
- * If the well will remain temporarily abandoned, you must submit a new TA application, CP-111, before 12/04/2026.

You may contact me at the number above if you have questions.

Very truly yours,

Michael Maier"