

KANSAS CORPORATION COMMISSION  
OIL & GAS CONSERVATION DIVISION

TEMPORARY ABANDONMENT WELL APPLICATION

OPERATOR: License# \_\_\_\_\_  
 Name: \_\_\_\_\_  
 Address 1: \_\_\_\_\_  
 Address 2: \_\_\_\_\_  
 City: \_\_\_\_\_ State: \_\_\_\_\_ Zip: \_\_\_\_\_ + \_\_\_\_\_  
 Contact Person: \_\_\_\_\_  
 Phone: ( \_\_\_\_\_ ) \_\_\_\_\_  
 Contact Person Email: \_\_\_\_\_  
 Field Contact Person: \_\_\_\_\_  
 Field Contact Person Phone: ( \_\_\_\_\_ ) \_\_\_\_\_

API No. 15- \_\_\_\_\_  
 Spot Description: \_\_\_\_\_  
 \_\_\_\_\_ - \_\_\_\_\_ - \_\_\_\_\_ - \_\_\_\_\_ Sec. \_\_\_\_\_ Twp. \_\_\_\_\_ S. R. \_\_\_\_\_  E  W  
 \_\_\_\_\_ feet from  N /  S Line of Section  
 \_\_\_\_\_ feet from  E /  W Line of Section  
 GPS Location: Lat: \_\_\_\_\_, Long: \_\_\_\_\_  
(e.g. xx.xxxxx) (e.g. -xxx.xxxxx)  
 Datum:  NAD27  NAD83  WGS84  
 County: \_\_\_\_\_ Elevation: \_\_\_\_\_  GL  KB  
 Lease Name: \_\_\_\_\_ Well #: \_\_\_\_\_  
 Well Type: (check one)  Oil  Gas  OG  WSW  Other: \_\_\_\_\_  
 SWD Permit #: \_\_\_\_\_  ENHR Permit #: \_\_\_\_\_  
 Gas Storage Permit #: \_\_\_\_\_  
 Spud Date: \_\_\_\_\_ Date Shut-In: \_\_\_\_\_

	Conductor	Surface	Production	Intermediate	Liner	Tubing
Size						
Setting Depth						
Amount of Cement						
Top of Cement						
Bottom of Cement						

Casing Fluid Level from Surface: \_\_\_\_\_ How Determined? \_\_\_\_\_ Date: \_\_\_\_\_  
 Casing Squeeze(s): \_\_\_\_\_ to \_\_\_\_\_ w / \_\_\_\_\_ sacks of cement, \_\_\_\_\_ to \_\_\_\_\_ w / \_\_\_\_\_ sacks of cement. Date: \_\_\_\_\_  
(top) (bottom) (top) (bottom)  
 Do you have a valid Oil & Gas Lease?  Yes  No  
 Depth and Type:  Junk in Hole at \_\_\_\_\_  Tools in Hole at \_\_\_\_\_ Casing Leaks:  Yes  No Depth of casing leak(s): \_\_\_\_\_  
(depth) (depth)  
 Type Completion:  ALT. I  ALT. II Depth of:  DV Tool: \_\_\_\_\_ w / \_\_\_\_\_ sacks of cement  Port Collar: \_\_\_\_\_ w / \_\_\_\_\_ sack of cement  
(depth) (depth)  
 Packer Type: \_\_\_\_\_ Size: \_\_\_\_\_ Inch Set at: \_\_\_\_\_ Feet  
 Total Depth: \_\_\_\_\_ Plug Back Depth: \_\_\_\_\_ Plug Back Method: \_\_\_\_\_

**Geological Data:**

Formation Name	Formation Top	Formation Base	Completion Information
1. _____	At: _____	to _____ Feet	Perforation Interval _____ to _____ Feet or Open Hole Interval _____ to _____ Feet
2. _____	At: _____	to _____ Feet	Perforation Interval _____ to _____ Feet or Open Hole Interval _____ to _____ Feet

UNDER PENALTY OF PERJURY I HEREBY ATTEST THAT THE INFORMATION CONTAINED HEREIN IS TRUE AND CORRECT TO THE BEST OF MY KNOWLEDGE

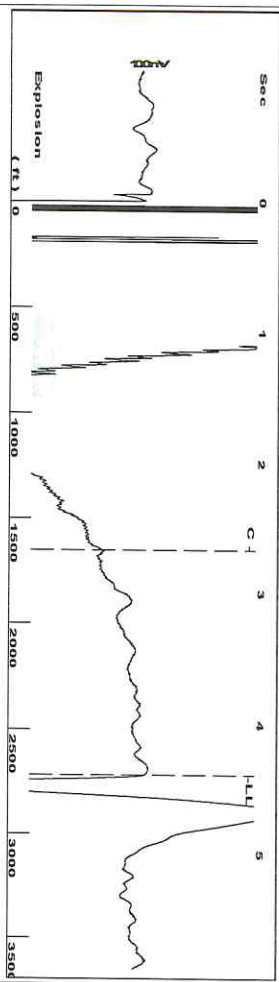
Submitted Electronically

<b>Do NOT Write in This Space - KCC USE ONLY</b>	Date Tested: _____	Results: _____	Date Plugged: _____	Date Repaired: _____	Date Put Back in Service: _____
	Review Completed by: _____ Comments: _____				
TA Approved: <input type="checkbox"/> Yes <input type="checkbox"/> Denied Date: _____					

Mail to the Appropriate KCC Conservation Office:

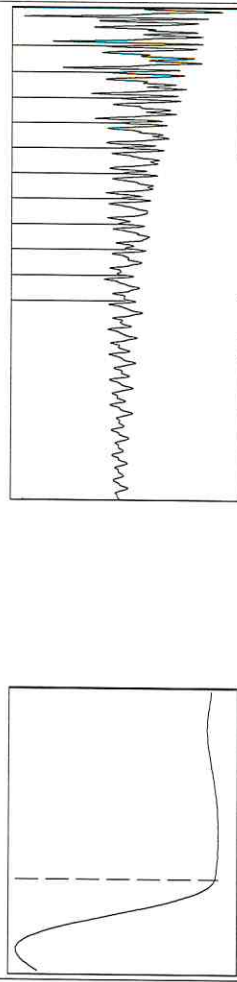
	KCC District Office #1 - 210 E. Frontview, Suite A, Dodge City, KS 67801	Phone 620.682.7933
	KCC District Office #2 - 3450 N. Rock Road, Building 600, Suite 601, Wichita, KS 67226	Phone 316.337.7400
	KCC District Office #3 - 137 E. 21st St., Chanute, KS 66720	Phone 620.902.6450
	KCC District Office #4 - 2301 E. 13th Street, Hays, KS 67601-2651	Phone 785.261.6250

Group: Atlas Well: Lloyd wells unit 7-20 (acquired on: 11/06/25 14:31:54)



Filter Type High Pass  
 Manual Acoustic Velocity 1223.94 ft/s  
 Automatic Collar Count Yes  
 Manual JTS/sec 19.305  
 Time 4.395 sec  
 Joints 85.7828 Jts  
 Depth 2719.31 ft

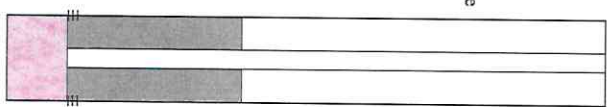
0.5 to 1.5 (Sec) |



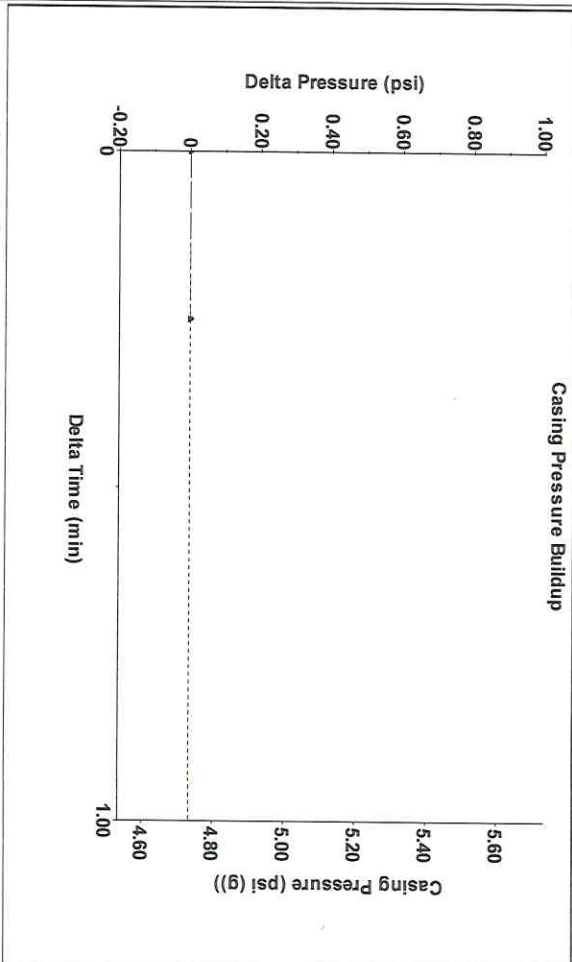
Analysis Method: Automatic

Group: Atlas Well: Lloyd wells unit 7-20 (acquired on: 11/06/25 14:31:54)

Production	Current	Potential	Casing Pressure	Static
Oil	-*-	BBL/D	4.7 psi (g)	Oil Column Height
Water	-*-	BBL/D	0.0 psi	MID 0 ft
Gas	-*-	Mscf/D	0.25 min	
IPR Method		Vogel	Gas/Liquid Interface Pressure	
PBHP/SBHP		-*-	6.1 psi (g)	
Production Efficiency				
Oil	40 deg API		Liquid Level Depth	Water Column Height
Water	1.05 Sp.Gr.H2O		2719.31 ft	MD 1510 ft
Gas	0.76 Sp.Gr.AIR		Pump Intake Depth	
			4291.00 ft	
			Formation Depth	
			4238.50 ft	
Acoustic Velocity	1237.46 ft/s			Static BHP
				692.7 psi (g)

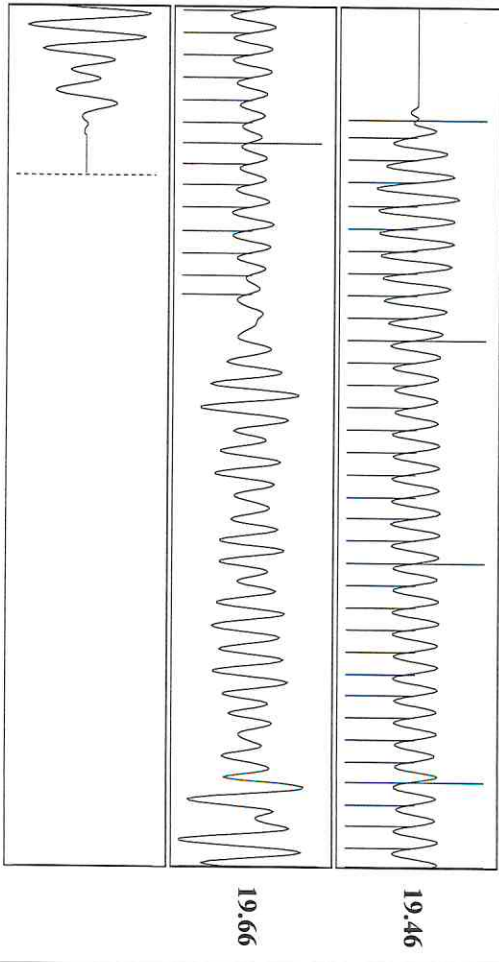


Group: Atlas Well: Lloyd wells unit 7-20 (acquired on: 11/06/25 14:31:54)



Change in Pressure 0.00 psi  
 Change in Time 0.25 min  
 PT4212 Range  
 0 - ? psi

Group: Atlas Well: Lloyd wells unit 7-20 (acquired on: 11/06/25 14:31:54)



Acoustic Velocity 1237.46 ft/s  
 Joints Per Second 19.5183 Jts/sec  
 Depth to liquid level 2719.31 ft  
 Automatic Collar Count Yes  
 Joints counted 47  
 Joints to liquid level 85.7828  
 Filter Width 17.305  
 Time to 1st Collar 2.668

Conservation Division  
District Office No. 2  
3450 N. Rock Road  
Building 600, Suite 601  
Wichita, KS 67226



Phone: 316-337-7400  
<http://kcc.ks.gov/>

Andrew J. French, Chairperson  
Dwight D. Keen, Commissioner  
Annie Kuether, Commissioner

Laura Kelly, Governor

12/09/2025

Sam  
Atlas Operating LLC  
1900 ST JAMES PLACE SUITE 800  
HOUSTON, TX 77056-4133

Re: Temporary Abandonment  
API 15-095-21965-00-00  
LLOYD WELLS UNIT 7-20  
NW/4 Sec.20-30S-08W  
Kingman County, Kansas

Dear Sam:

"Your temporary abandonment (TA) application for the well listed above has been approved. In accordance with K.A.R. 82-3-111 the TA status of this well will expire 12/09/2026.

- \* If you return this well to service or plug it, please notify the District Office.
- \* If you sell this well you are required to file a Transfer of Operator form, T-1.
- \* If the well will remain temporarily abandoned, you must submit a new TA application, CP-111, before 12/09/2026.

You may contact me at the number above if you have questions.

Very truly yours,

Neil Lake - ECRS"