

KANSAS CORPORATION COMMISSION
OIL & GAS CONSERVATION DIVISION

TEMPORARY ABANDONMENT WELL APPLICATION

OPERATOR: License#
Name:
Address 1:
Address 2:
City: State: Zip:
Contact Person:
Phone:
Contact Person Email:
Field Contact Person:
Field Contact Person Phone:

API No. 15-
Spot Description:
Sec. Twp. S. R.
feet from N / S Line of Section
feet from E / W Line of Section
GPS Location: Lat: , Long:
Datum: NAD27 NAD83 WGS84
County: Elevation: GL KB
Lease Name: Well #:
Well Type: (check one) Oil Gas OG WSW Other:
SWD Permit #: ENHR Permit #:
Gas Storage Permit #:
Spud Date: Date Shut-In:

Table with 7 columns: Conductor, Surface, Production, Intermediate, Liner, Tubing. Rows include Size, Setting Depth, Amount of Cement, Top of Cement, Bottom of Cement.

Casing Fluid Level from Surface: How Determined? Date:
Casing Squeeze(s): to w / sacks of cement, to w / sacks of cement. Date:
Do you have a valid Oil & Gas Lease? Yes No
Depth and Type: Junk in Hole at Tools in Hole at Casing Leaks: Yes No Depth of casing leak(s):
Type Completion: ALT. I ALT. II Depth of: DV Tool: w / sacks of cement Port Collar: w / sack of cement
Packer Type: Size: Inch Set at: Feet
Total Depth: Plug Back Depth: Plug Back Method:

Geological Date:

Table with 4 columns: Formation Name, Formation Top, Formation Base, Completion Information. Rows 1 and 2.

UNDER PENALTY OF PERJURY I HEREBY ATTEST THAT THE INFORMATION CONTAINED HEREIN IS TRUE AND CORRECT TO THE BEST OF MY KNOWLEDGE

Submitted Electronically

Do NOT Write in This Space - KCC USE ONLY
Date Tested: Results: Date Plugged: Date Repaired: Date Put Back in Service:
Review Completed by: Comments:
TA Approved: Yes Denied Date:

Mail to the Appropriate KCC Conservation Office:

Table with 3 columns: District Office, Address, Phone. Rows for District Office #1, #2, #3, #4.

**General**

Well ID Jones Trust 3408 2-28H  
 Well Jones Trust 3408 2-28H  
 Company SD  
 Operator Kelly Snow  
 Lease Name Jones Trust 3408 2-28H  
 Elevation 0.00 ft  
 Production Method Electrical Submersible Pump

Comment

**Tubulars**

Tubing OD 2.875 in  
 Average Joint Length 31.700 ft  
 Sliding Sleeve - \* - ft  
 Casing OD 7.000 in  
 Liner OD - \* - in  
 Top of Liner - \* - ft  
 PBTD - \* - ft  
 Kelly Bushing 18.00 ft

**Pump Assembly**

Installation Date - \* -  
 Pump Intake Depth 5193.00 ft  
 PIP Gage - \* - ft

**Gas Separator**

Gas Separator Not Used  
 Tubing Discharge Temp - \* - deg F

**Pump Configuration**

	Top Pump	Pump 2	Pump 3	Pump 4	Pump 5
Pump Manufacturer	- * -	- * -	- * -	- * -	- * -
Pump Description/Series	- * -	- * -	- * -	- * -	- * -
Serial Number	- * -	- * -	- * -	- * -	- * -
Stage Count	0	0	0	0	0
Pump Housing	- * -	- * -	- * -	- * -	- * -

Total Length of Pump Assembly - \* - ft  
 Shroud is Not Used

**Electric Equipment**

Control Panel - \* -  
 Variable Frequency is Not Used  
 Overload Set Point - \* -  
 Underload Set Point - \* -  
 Overvoltage Set Point - \* -  
 Undervoltage Set Point - \* -  
 Frequency - \* -  
 Pump Up Time - \* -

**Cable Data**

Round Cable Type - \* -  
 Round Cable Length - \* - ft  
 Flat Cable Type - \* -  
 Flat Cable Length - \* - ft

**Electrical Cost**

Cost Per kW-Hour - \* -  
 Cost Per kW - \* -

**Motor Assembly Description**

	Top Motor	Motor 2	Motor 3	Motor 4
Manufacturer	- * -	- * -	- * -	- * -
Series	- * -	- * -	- * -	- * -
Type	- * -	- * -	- * -	- * -
HP	- * -	- * -	- * -	- * -
Volts/Amps	- * -	- * -	- * -	- * -
Total Length of Motor Assembly	- * - ft		Installation Date	- * -

**Electrical Parameters**

AMPS		VOLTS	
A Input	- * -	BA Input	- * -
B Input	- * -	CB Input	- * -
C Input	- * -	AC Input	- * -
		A-gnd	- * -
		B-gnd	- * -
		C-gnd	- * -
Kilowatt	- * -	Power Factor	- * -
		Date and Time of Measurement	- * -

**Conditions**

**Pressure**

Static BHP 123.3 psi (g)  
 Static BHP Method Acoustic  
 Static BHP Date 11/03/2025  
 Producing BHP 114.1 psi (g)  
 Producing BHP Method Acoustic  
 Producing BHP Date 11/03/2025  
 Formation Depth 5193.00 ft

**Production**

Oil Production - \* - BBL/D  
 Water Production - \* - BBL/D  
 Gas Production - \* - Mscf/D  
 Production Date - \* -

**Temperatures**

Surface Temperature 70 deg F  
 Bottomhole Temperature 150 deg F

**Surface Producing Pressures**

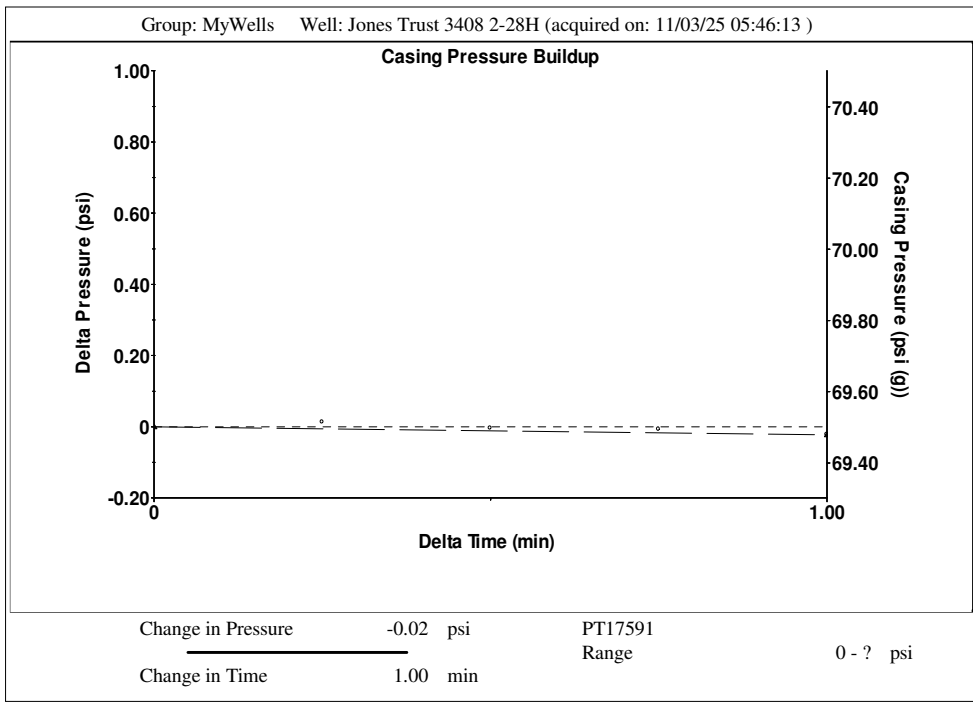
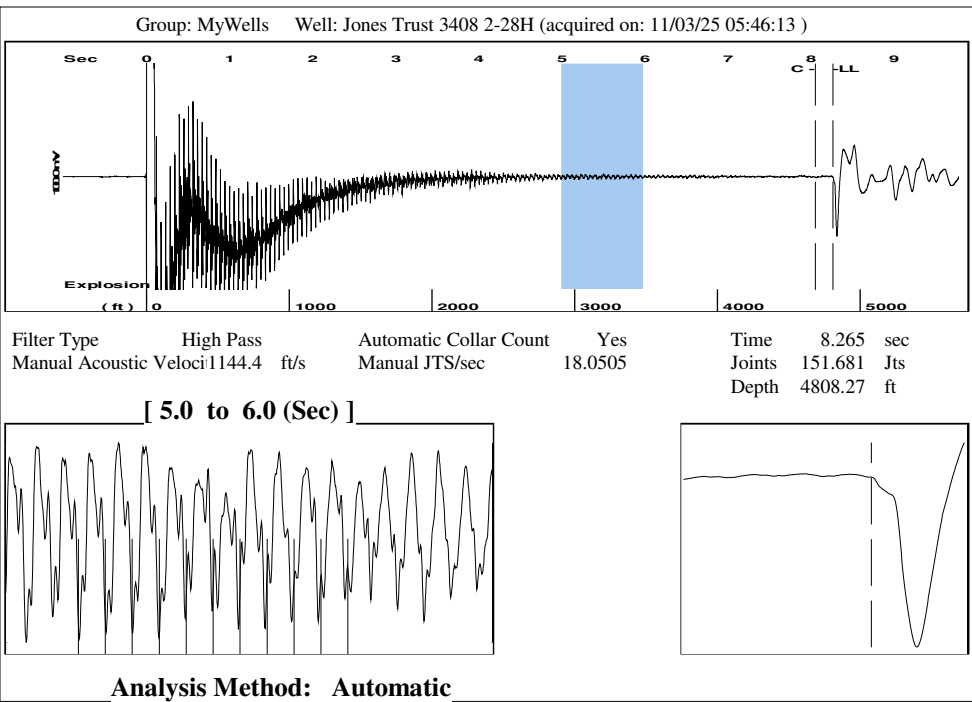
Tubing Pressure - \* - psi (g)  
 Casing Pressure 69.5 psi (g)

**Fluid Properties**

Oil API 40 deg API  
 Water Specific Gravity 1.05 Sp.Gr.H2O

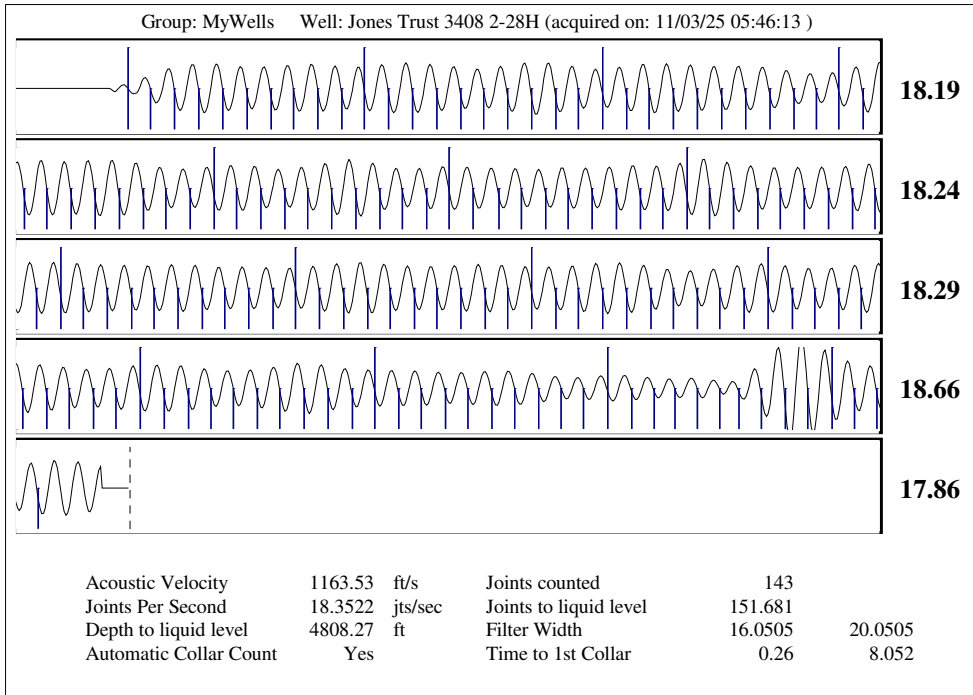
**Casing Pressure Buildup**

Change in Pressure -0.023 psi  
 Over Change in Time 1.00 min



Group: MyWells Well: Jones Trust 3408 2-28H (acquired on: 11/03/25 05:46:13)

Production		Potential		Casing Pressure			Static		
Oil	- * -	- * -	BBL/D	Casing Pressure	69.5 psi (g)		Oil Column Height	MD	0 ft
Water	- * -	- * -	BBL/D	Casing Pressure Buildup	1.00 min		TVD	0 ft	
Gas	- * -	- * -	Mscf/D	Gas/Liquid Interface Pressure	81.0 psi (g)		Water Column Height	MD	367 ft
				Liquid Level Depth	4808.27 ft		TVD	93 ft	
IPR Method		Vogel		Main Depth to Liq Level TVD	4586.04 ft		Pump Intake Depth		
PBHP/SBHP		- * -		Pump Intake Depth	5193.00 ft		Formation Depth		
Production Efficiency		0.0		Formation Depth	5193.00 ft		Formation Depth TVD		
Oil	40 deg.API			Formation Depth TVD	4683.75 ft		Static BHP		123.3 psi (g)
Water	1.05 Sp.Gr.H2O								
Gas	0.83 Sp.Gr.AIR								
Acoustic Velocity	1163.53 ft/s								
Acoustic Test									



Conservation Division  
District Office No. 2  
3450 N. Rock Road  
Building 600, Suite 601  
Wichita, KS 67226



Phone: 316-337-7400  
<http://kcc.ks.gov/>

Andrew J. French, Chairperson  
Dwight D. Keen, Commissioner  
Annie Kuether, Commissioner

Laura Kelly, Governor

12/09/2025

Leah Medrana  
SandRidge Exploration and Production LLC  
1 E SHERIDAN AVE STE 500  
OKLAHOMA CITY, OK 73104-2494

Re: Temporary Abandonment  
API 15-077-22091-01-00  
JONES TRUST 3408 2-28H 1L  
NW/4 Sec.28-34S-08W  
Harper County, Kansas

Dear Leah Medrana:

"Your temporary abandonment (TA) application for the well listed above has been approved. In accordance with K.A.R. 82-3-111 the TA status of this well will expire 12/09/2026.

- \* If you return this well to service or plug it, please notify the District Office.
- \* If you sell this well you are required to file a Transfer of Operator form, T-1.
- \* If the well will remain temporarily abandoned, you must submit a new TA application, CP-111, before 12/09/2026.

You may contact me at the number above if you have questions.

Very truly yours,

Neil Lake - ECRS"