

KANSAS CORPORATION COMMISSION
OIL & GAS CONSERVATION DIVISION

TEMPORARY ABANDONMENT WELL APPLICATION

OPERATOR: License# \_\_\_\_\_
Name: \_\_\_\_\_
Address 1: \_\_\_\_\_
Address 2: \_\_\_\_\_
City: \_\_\_\_\_ State: \_\_\_\_\_ Zip: \_\_\_\_\_ + \_\_\_\_\_
Contact Person: \_\_\_\_\_
Phone:( \_\_\_\_\_ ) \_\_\_\_\_
Contact Person Email: \_\_\_\_\_
Field Contact Person: \_\_\_\_\_
Field Contact Person Phone: ( \_\_\_\_\_ ) \_\_\_\_\_

API No. 15- \_\_\_\_\_
Spot Description: \_\_\_\_\_
- - - - - Sec. \_\_\_\_\_ Twp. \_\_\_\_\_ S. R. \_\_\_\_\_  E  W
\_\_\_\_\_ feet from  N /  S Line of Section
\_\_\_\_\_ feet from  E /  W Line of Section
GPS Location: Lat: \_\_\_\_\_, Long: \_\_\_\_\_
Datum:  NAD27  NAD83  WGS84
County: \_\_\_\_\_ Elevation: \_\_\_\_\_  GL  KB
Lease Name: \_\_\_\_\_ Well #: \_\_\_\_\_
Well Type: (check one)  Oil  Gas  OG  WSW  Other: \_\_\_\_\_
 SWD Permit #: \_\_\_\_\_  ENHR Permit #: \_\_\_\_\_
 Gas Storage Permit #: \_\_\_\_\_
Spud Date: \_\_\_\_\_ Date Shut-In: \_\_\_\_\_

Table with 7 columns: Conductor, Surface, Production, Intermediate, Liner, Tubing. Rows include Size, Setting Depth, Amount of Cement, Top of Cement, Bottom of Cement.

Casing Fluid Level from Surface: \_\_\_\_\_ How Determined? \_\_\_\_\_ Date: \_\_\_\_\_
Casing Squeeze(s): \_\_\_\_\_ to \_\_\_\_\_ w / \_\_\_\_\_ sacks of cement, \_\_\_\_\_ to \_\_\_\_\_ w / \_\_\_\_\_ sacks of cement. Date: \_\_\_\_\_
Do you have a valid Oil & Gas Lease?  Yes  No
Depth and Type:  Junk in Hole at \_\_\_\_\_ (depth)  Tools in Hole at \_\_\_\_\_ (depth) Casing Leaks:  Yes  No Depth of casing leak(s): \_\_\_\_\_
Type Completion:  ALT. I  ALT. II Depth of:  DV Tool: \_\_\_\_\_ w / \_\_\_\_\_ sacks of cement  Port Collar: \_\_\_\_\_ w / \_\_\_\_\_ sack of cement
Packer Type: \_\_\_\_\_ Size: \_\_\_\_\_ Inch Set at: \_\_\_\_\_ Feet
Total Depth: \_\_\_\_\_ Plug Back Depth: \_\_\_\_\_ Plug Back Method: \_\_\_\_\_

Geological Data:

Table with 4 columns: Formation Name, Formation Top, Formation Base, Completion Information. Rows 1 and 2.

UNDER PENALTY OF PERJURY I HEREBY ATTEST THAT THE INFORMATION CONTAINED HEREIN IS TRUE AND CORRECT TO THE BEST OF MY KNOWLEDGE

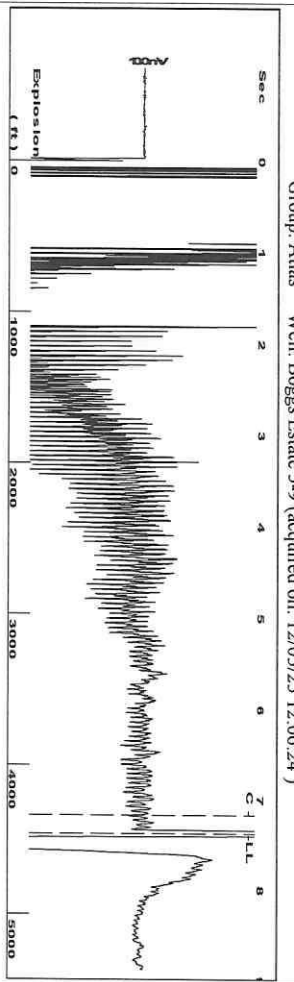
Submitted Electronically

Do NOT Write in This Space - KCC USE ONLY
Date Tested: \_\_\_\_\_ Results: \_\_\_\_\_ Date Plugged: \_\_\_\_\_ Date Repaired: \_\_\_\_\_ Date Put Back in Service: \_\_\_\_\_
Review Completed by: \_\_\_\_\_ Comments: \_\_\_\_\_
TA Approved:  Yes  Denied Date: \_\_\_\_\_

Mail to the Appropriate KCC Conservation Office:

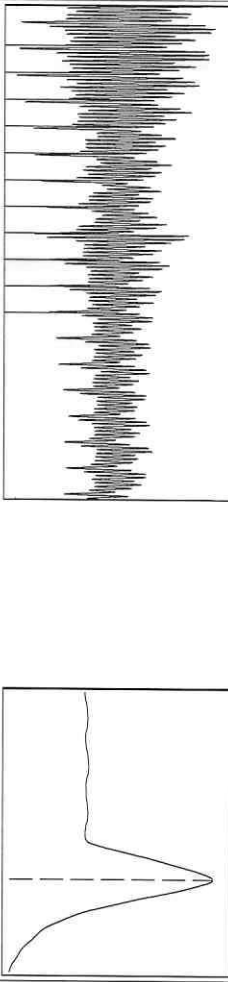
Table with 2 columns: Office Address, Phone. Rows for KCC District Office #1, #2, #3, #4.

Group: Atlas Well: Boggs Estate 5-9 (acquired on: 12/05/25 12:06:24 )



Filter Type High Pass Automatic Collar Count Yes  
 Manual Acoustic Velo 174.07 ft/s Manual JTS/sec 18.5185  
 Time 7.377 sec  
 Joints 140.636 Jts  
 Depth 4458.16 ft

0.5 to 1.5 (Sec) |

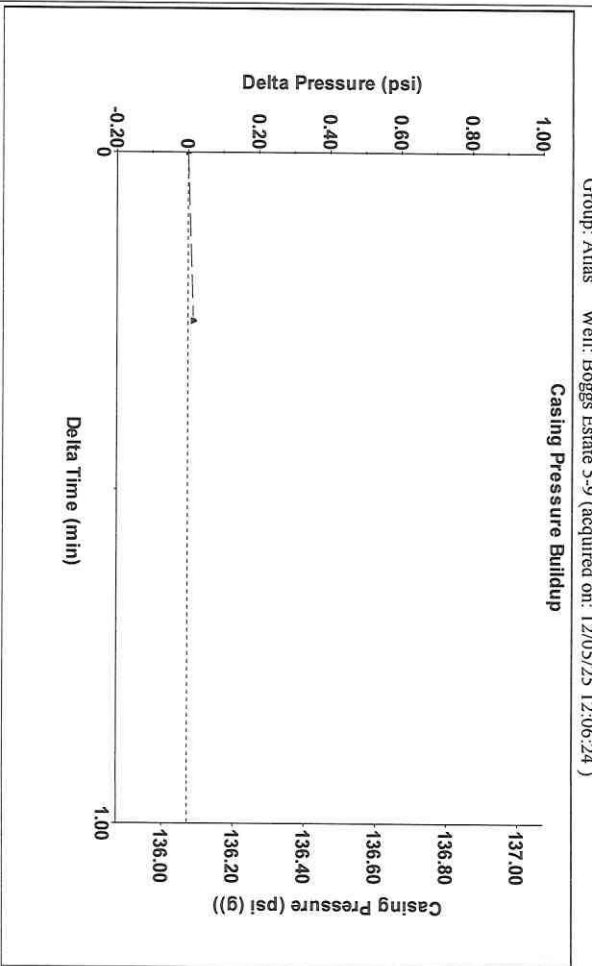


Analysis Method: Automatic

Group: Atlas Well: Boggs Estate 5-9 (acquired on: 12/05/25 12:06:24 )

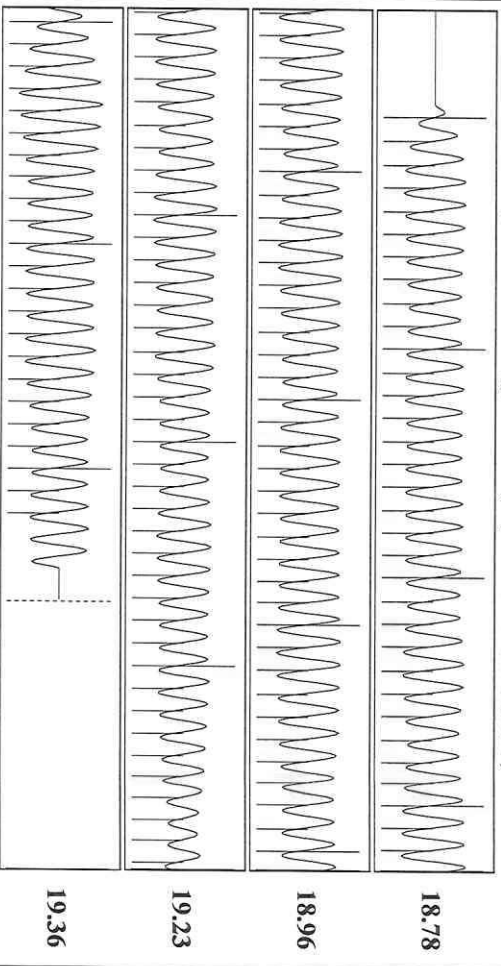
Production	Current	Potential	Casing Pressure	Static
Oil	-*-	BBL/D	136.1 psi (g)	Oil Column Height
Water	-*-	BBL/D	0.014 psi	MID 0 ft
Gas	-*-	Mscf/D	0.25 min	
IPR Method		Vogel	Gas/Liquid Interface Pressure	
PBHP/SBHP		-*-	133.4 psi (g)	
Production Efficiency		0.0		
Oil	40 deg API		Liquid Level Depth	Water Column Height
Water	1.05 Sp.Gr:H2O		4458.16 ft	MID -*- ft
Gas	0.78 Sp.Gr:AIR		Pump Intake Depth	
Acoustic Velocity	1208.67 ft/s		Formation Depth	
			4451.50 ft	
			Static BHP	
			133.4 psi (g)	

Group: Atlas Well: Boggs Estate 5-9 (acquired on: 12/05/25 12:06:24 )



Change in Pressure 0.01 psi PT4212  
 Change in Time 0.25 min Range 0 - ? psi

Group: Atlas Well: Boggs Estate 5-9 (acquired on: 12/05/25 12:06:24 )



Acoustic Velocity 1208.67 ft/s Joints counted 132  
 Joints Per Second 19.0641 Jts/sec Joints to liquid level 140.636  
 Depth to liquid level 4458.16 ft Filter Width 16.5185  
 Automatic Collar Count Yes Time to 1st Collar 0.248 7.172

Acoustic Test



Conservation Division  
District Office No. 1  
210 E. Frontview, Suite A  
Dodge City, KS 67801



Phone: 620-682-7933  
<http://kcc.ks.gov/>

Andrew J. French, Chairperson  
Dwight D. Keen, Commissioner  
Annie Kuether, Commissioner

Laura Kelly, Governor

12/15/2025

Saumyadeep Halder  
Atlas Operating LLC  
1900 ST JAMES PLACE SUITE 800  
HOUSTON, TX 77056-4133

Re: Temporary Abandonment  
API 15-007-22545-00-00  
BOGGS ESTATE 5-9  
SW/4 Sec.09-33S-12W  
Barber County, Kansas

Dear Saumyadeep Halder:

"Your temporary abandonment (TA) application for the well listed above has been approved. In accordance with K.A.R. 82-3-111 the TA status of this well will expire 12/15/2026.

- \* If you return this well to service or plug it, please notify the District Office.
- \* If you sell this well you are required to file a Transfer of Operator form, T-1.
- \* If the well will remain temporarily abandoned, you must submit a new TA application, CP-111, before 12/15/2026.

You may contact me at the number above if you have questions.

Very truly yours,

Michael Maier"