

KANSAS CORPORATION COMMISSION
OIL & GAS CONSERVATION DIVISION

Form must be Typed
Form must be signed

TEMPORARY ABANDONMENT WELL APPLICATION

All blanks must be complete

OPERATOR: License#
Name:
Address 1:
Address 2:
City: State: Zip:
Contact Person:
Phone:
Contact Person Email:
Field Contact Person:
Field Contact Person Phone:

API No. 15-
Spot Description:
Sec. Twp. S. R.
feet from N / S Line of Section
feet from E / W Line of Section
GPS Location: Lat: , Long:
Datum: NAD27 NAD83 WGS84
County: Elevation: GL KB
Lease Name: Well #:
Well Type: Oil Gas OG WSW Other:
SWD Permit #: ENHR Permit #:
Gas Storage Permit #:
Spud Date: Date Shut-In:

Table with 7 columns: Conductor, Surface, Production, Intermediate, Liner, Tubing. Rows include Size, Setting Depth, Amount of Cement, Top of Cement, Bottom of Cement.

Casing Fluid Level from Surface: How Determined? Date:
Casing Squeeze(s): to w / sacks of cement, to w / sacks of cement. Date:
Do you have a valid Oil & Gas Lease? Yes No
Depth and Type: Junk in Hole at Tools in Hole at Casing Leaks: Yes No Depth of casing leak(s):
Type Completion: ALT. I ALT. II Depth of: DV Tool: w / sacks of cement Port Collar: w / sack of cement
Packer Type: Size: Inch Set at: Feet
Total Depth: Plug Back Depth: Plug Back Method:

Geological Data:

Table with 4 columns: Formation Name, Formation Top, Formation Base, Completion Information. Rows 1 and 2.

UNDER PENALTY OF PERJURY I HEREBY ATTEST THAT THE INFORMATION CONTAINED HEREIN IS TRUE AND CORRECT TO THE BEST OF MY KNOWLEDGE

Submitted Electronically

Do NOT Write in This Space - KCC USE ONLY
Date Tested: Results: Date Plugged: Date Repaired: Date Put Back in Service:
Review Completed by: Comments:
TA Approved: Yes Denied Date:

Mail to the Appropriate KCC Conservation Office:

Table with 3 columns: District Office #, Address, Phone. Rows 1-4.

Liquid Level

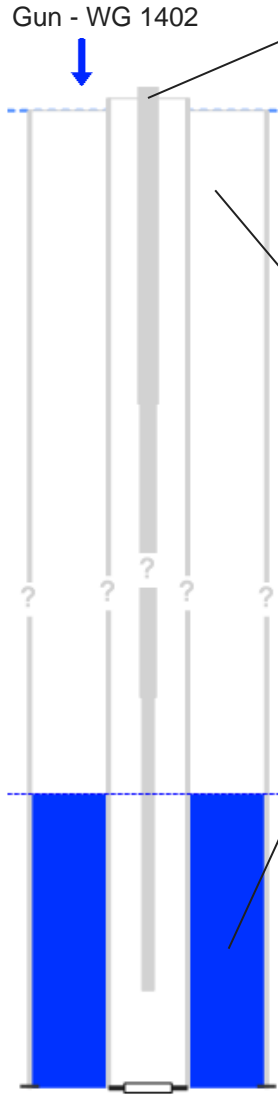
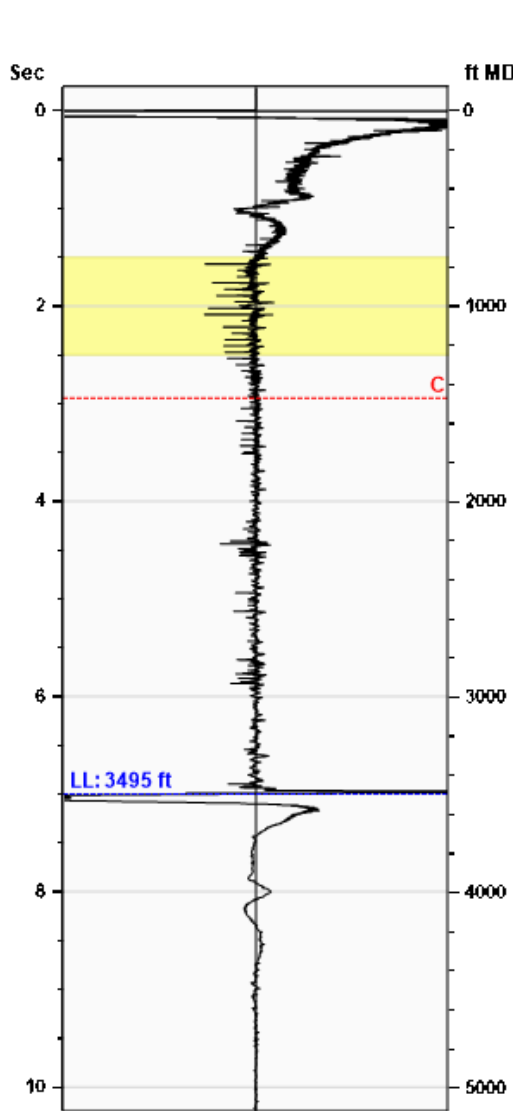
3495 ft MD

Fluid Above Pump

.* ft TVD

Equivalent Gas Free Above Pump

.* ft TVD



Production

Date Entered 07/10/25

	Current	Potential	
Oil	.*	.*	BBL/D
Water	.*	.*	BBL/D
Gas	.*	.*	Mscf/D

IPR Method Vogel
 PBHP/SBHP 1.00
 Producing Efficiency 0.00%

Casing Pressure

Pressure 854.6 psi (g)

Annular Gas Flow

Gas Flow .* Mscf/D

Fluid Properties

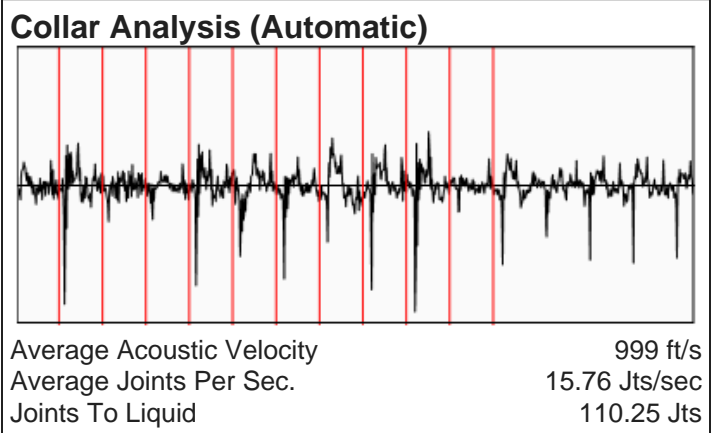
% Liquid Above Pump 100.00%
 % Liquid Below Pump .*

Depths

Pump Intake Depth 5000 ft
 Formation Depth 5000 ft

Wellbore Pressures

PIP .*
 PBHP .*
 SBHP .*
 Gas/Liq Interface .*



Casing Pressure Buildup

No Pressure Acquired

Casing Pressure 854.6 psi (g)
 Buildup 0.0 psi (g)
 Buildup Time 0 sec
 Gas Gravity from Collar Analysis (Automatic) 0.8404 Air = 1

Comments and Recommendations

Acoustic Test

Echometer Company
 5001 Ditto Lane
 Wichita Falls, TX 76302
 (940) 767-4334
 info@echometer.com

Conservation Division
District Office No. 1
210 E. Frontview, Suite A
Dodge City, KS 67801



Phone: 620-682-7933
<http://kcc.ks.gov/>

Andrew J. French, Chairperson
Dwight D. Keen, Commissioner
Annie Kuether, Commissioner

Laura Kelly, Governor

01/15/2026

Suzette Brooks
Alliance Energy LLC
316 N Winters Furr
#601
Johnson City, TX 78636

Re: Temporary Abandonment
API 15-097-21510-00-00
KELLER 2
SW/4 Sec.05-28S-17W
Kiowa County, Kansas

Dear Suzette Brooks:

Your application for Temporary Abandonment (TA) for the above-listed well is denied for the following reasons(s):

Shut-in Over 10 years

Pursuant to K.A.R. 82-3-111, the well must be plugged, or returned to service, or obtain temporary abandonment status by 02/14/2026.

This deadline does NOT override any compliance deadline given to you in any Commission Order.

You may contact me if you have any questions.

Sincerely,
Michael Maier
KCC DISTRICT 1