

KANSAS CORPORATION COMMISSION
OIL & GAS CONSERVATION DIVISION

TEMPORARY ABANDONMENT WELL APPLICATION

OPERATOR: License#
Name:
Address 1:
Address 2:
City: State: Zip:
Contact Person:
Phone:
Contact Person Email:
Field Contact Person:
Field Contact Person Phone:

API No. 15-
Spot Description:
Sec. Twp. S. R.
GPS Location: Lat: Long:
Datum: NAD27 NAD83 WGS84
County: Elevation:
Lease Name: Well #:
Well Type: Oil Gas OG WSW Other:
SWD Permit #: ENHR Permit #:
Gas Storage Permit #:
Spud Date: Date Shut-In:

Table with 7 columns: Conductor, Surface, Production, Intermediate, Liner, Tubing. Rows include Size, Setting Depth, Amount of Cement, Top of Cement, Bottom of Cement.

Casing Fluid Level from Surface: How Determined? Date:
Casing Squeeze(s): to w / sacks of cement, to w / sacks of cement. Date:
Do you have a valid Oil & Gas Lease? Yes No
Depth and Type: Junk in Hole at Tools in Hole at Casing Leaks: Yes No Depth of casing leak(s):
Type Completion: ALT. I ALT. II Depth of: DV Tool: w / sacks of cement Port Collar: w / sack of cement
Packer Type: Size: Inch Set at: Feet
Total Depth: Plug Back Depth: Plug Back Method:

Geological Data:

Table with 4 columns: Formation Name, Formation Top, Formation Base, Completion Information. Rows 1 and 2.

UNDER PENALTY OF PERJURY I HEREBY ATTEST THAT THE INFORMATION CONTAINED HEREIN IS TRUE AND CORRECT TO THE BEST OF MY KNOWLEDGE

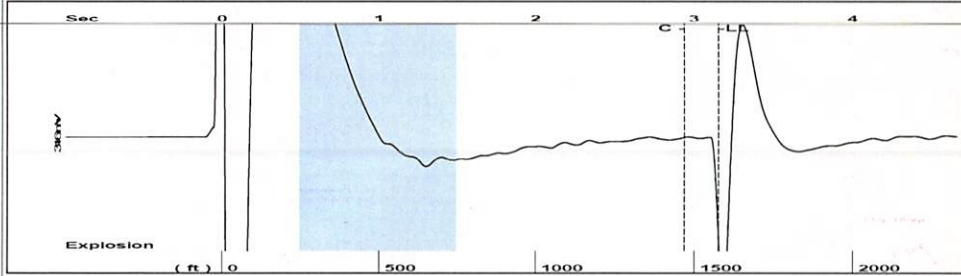
Submitted Electronically

Do NOT Write in This Space - KCC USE ONLY
Date Tested: Results: Date Plugged: Date Repaired: Date Put Back in Service:
Review Completed by: Comments:
TA Approved: Yes Denied Date:

Mail to the Appropriate KCC Conservation Office:

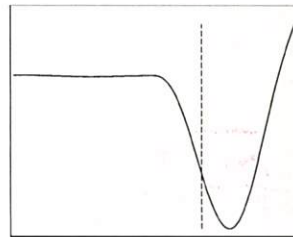
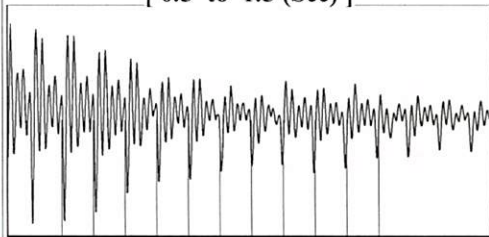
Table with 2 columns: Office Address, Phone. Rows for District Office #1, #2, #3, #4.

Group: 3G Production, LLC Well: ICHU 3 (acquired on: 01/15/26 11:44:06 )



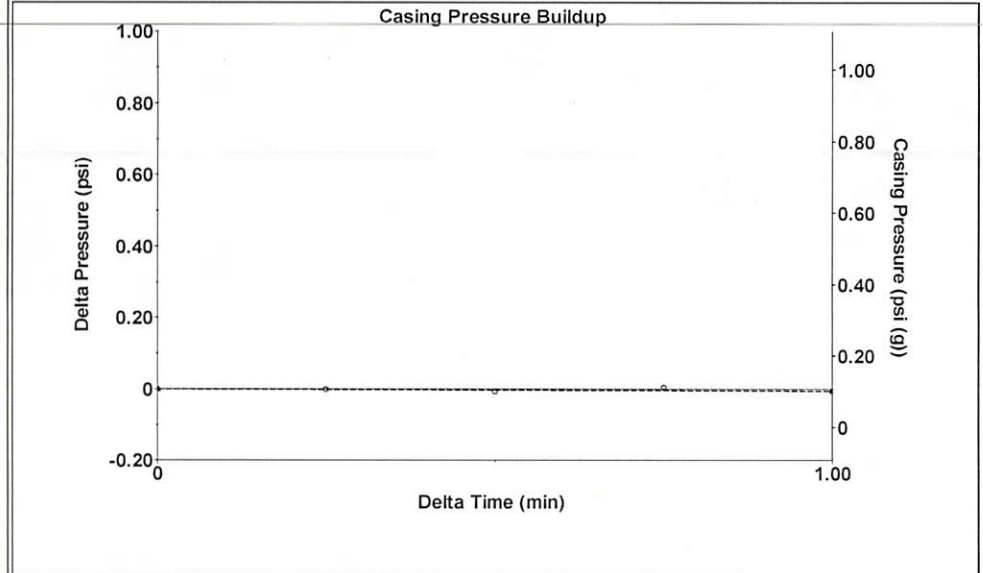
Filter Type High Pass Automatic Collar Count Yes Time 3.154 sec  
 Manual Acoustic Velo 964.992 ft/s Manual JTS/sec 15.2207 Joints 49.7252 Jts  
 Depth 1576.29 ft

[ 0.5 to 1.5 (Sec) ]



Analysis Method: Automatic

Group: 3G Production, LLC Well: ICHU 3 (acquired on: 01/15/26 11:44:06 )



Change in Pressure -0.01 psi PT 15469  
 Change in Time 1.00 min Range 0 - ? psi

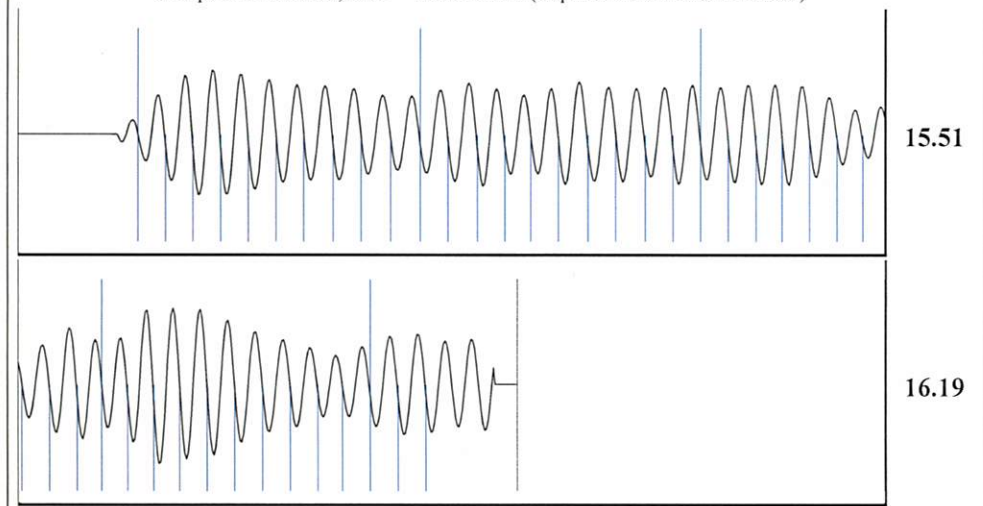
Group: 3G Production, LLC Well: ICHU 3 (acquired on: 01/15/26 11:44:06 )

Production Current	Potential	Casing Pressure
Oil - * -	- * - BBL/D	0.1 psi (g)
Water - * -	- * - BBL/D	Casing Pressure Buildup
Gas - * -	- * - Mscf/D	-0.0 psi
		1.00 min
IPR Method	Vogel	Gas/Liquid Interface Pressure
PBHP/SBHP	- * -	0.9 psi (g)
Production Efficiency	0.0	
		Liquid Level Depth
Oil 40 deg.API		1576.29 ft
Water 1.05 Sp.Gr.H2O		Pump Intake Depth
Gas 0.97 Sp.Gr.AIR		3786.00 ft
Acoustic Velocity	999.55 ft/s	Formation Depth
		3786.00 ft



Producing  
 Annular Gas Flow 0 Mscf/D  
 % Liquid 100 %  
 Pump Intake 736.4 psi (g)  
 Producing BHP 736.4 psi (g)  
 Static BHP - \* - psi (g)

Group: 3G Production, LLC Well: ICHU 3 (acquired on: 01/15/26 11:44:06 )



Acoustic Velocity	999.55 ft/s	Joints counted	42
Joints Per Second	15.7658 jts/sec	Joints to liquid level	49.7252
Depth to liquid level	1576.29 ft	Filter Width	13.2207 17.2207
Automatic Collar Count	Yes	Time to 1st Collar	0.276 2.94

Conservation Division  
District Office No. 1  
210 E. Frontview, Suite A  
Dodge City, KS 67801



Phone: 620-682-7933  
<http://kcc.ks.gov/>

Andrew J. French, Chairperson  
Dwight D. Keen, Commissioner  
Annie Kuether, Commissioner

Laura Kelly, Governor

01/22/2026

Kenneth C Gates  
Iuka-Carmi Development LLC  
PO BOX 847  
PRATT, KS 67124-0847

Re: Temporary Abandonment  
API 15-151-10162-00-00  
ICHU 3  
NE/4 Sec.06-27S-12W  
Pratt County, Kansas

Dear Kenneth C Gates:

"Your temporary abandonment (TA) application for the well listed above has been approved. In accordance with K.A.R. 82-3-111 the TA status of this well will expire 01/22/2027.

- \* If you return this well to service or plug it, please notify the District Office.
- \* If you sell this well you are required to file a Transfer of Operator form, T-1.
- \* If the well will remain temporarily abandoned, you must submit a new TA application, CP-111, before 01/22/2027.

You may contact me at the number above if you have questions.

Very truly yours,

Michael Maier"