

KANSAS CORPORATION COMMISSION
OIL & GAS CONSERVATION DIVISION

Form must be Typed
Form must be signed

TEMPORARY ABANDONMENT WELL APPLICATION

All blanks must be complete

OPERATOR: License#
Name:
Address 1:
Address 2:
City: State: Zip:
Contact Person:
Phone:
Contact Person Email:
Field Contact Person:
Field Contact Person Phone:

API No. 15-
Spot Description:
Sec. Twp. S. R.
feet from N / S Line of Section
feet from E / W Line of Section
GPS Location: Lat: , Long:
Datum: NAD27 NAD83 WGS84
County: Elevation: GL KB
Lease Name: Well #:
Well Type: (check one) Oil Gas OG WSW Other:
SWD Permit #: ENHR Permit #:
Gas Storage Permit #:
Spud Date: Date Shut-In:

Table with 7 columns: Conductor, Surface, Production, Intermediate, Liner, Tubing. Rows include Size, Setting Depth, Amount of Cement, Top of Cement, Bottom of Cement.

Casing Fluid Level from Surface: How Determined? Date:
Casing Squeeze(s): to w / sacks of cement, to w / sacks of cement. Date:
Do you have a valid Oil & Gas Lease? Yes No
Depth and Type: Junk in Hole at Tools in Hole at Casing Leaks: Yes No Depth of casing leak(s):
Type Completion: ALT. I ALT. II Depth of: DV Tool: w / sacks of cement Port Collar: w / sack of cement
Packer Type: Size: Inch Set at: Feet
Total Depth: Plug Back Depth: Plug Back Method:

Geological Data:

Table with 4 columns: Formation Name, Formation Top, Formation Base, Completion Information. Rows 1 and 2.

UNDER PENALTY OF PERJURY I HEREBY ATTEST THAT THE INFORMATION CONTAINED HEREIN IS TRUE AND CORRECT TO THE BEST OF MY KNOWLEDGE

Submitted Electronically

Do NOT Write in This Space - KCC USE ONLY
Date Tested: Results: Date Plugged: Date Repaired: Date Put Back in Service:
Review Completed by: Comments:
TA Approved: Yes Denied Date:

Mail to the Appropriate KCC Conservation Office:

Table with 3 columns: District Office, Address, Phone. Rows for District Office #1, #2, #3, #4.

General

Well ID Lit Trust 3508 6-14H
 Well Lit Trust 3508 6-14H
 Company SD
 Operator Kelly Snow
 Lease Name Lit Trust 3508 6-14H
 Elevation 0.00 ft
 Production Method Electrical Submersible Pump

Comment

Tubulars

Tubing OD 2.875 in
 Average Joint Length 31.700 ft
 Sliding Sleeve - * - ft
 Casing OD 7.000 in
 Liner OD - * - in
 Top of Liner - * - ft
 PBTD - * - ft
 Kelly Bushing 20.00 ft

Pump Assembly

Installation Date - * -
 Pump Intake Depth - * - ft
 PIP Gage - * - ft

Gas Separator

Gas Separator Not Used
 Tubing Discharge Temp - * - deg F

Pump Configuration

	Top Pump	Pump 2	Pump 3	Pump 4	Pump 5
Pump Manufacturer	- * -	- * -	- * -	- * -	- * -
Pump Description/Series	- * -	- * -	- * -	- * -	- * -
Serial Number	- * -	- * -	- * -	- * -	- * -
Stage Count	0	0	0	0	0
Pump Housing	- * -	- * -	- * -	- * -	- * -

Total Length of Pump Assembly - * - ft
 Shroud is Not Used

Electric Equipment

Control Panel - * -
 Variable Frequency is Not Used
 Overload Set Point - * -
 Underload Set Point - * -
 Overvoltage Set Point - * -
 Undervoltage Set Point - * -
 Frequency - * -
 Pump Up Time - * -

Cable Data

Round Cable Type - * -
 Round Cable Length - * - ft
 Flat Cable Type - * -
 Flat Cable Length - * - ft

Electrical Cost

Cost Per kW-Hour - * -
 Cost Per kW - * -

Motor Assembly Description

	Top Motor	Motor 2	Motor 3	Motor 4
Manufacturer	- * -	- * -	- * -	- * -
Series	- * -	- * -	- * -	- * -
Type	- * -	- * -	- * -	- * -
HP	- * -	- * -	- * -	- * -
Volts/Amps	- * -	- * -	- * -	- * -
Total Length of Motor Assembly	- * - ft		Installation Date	- * -

Electrical Parameters

AMPS		VOLTS	
A Input	- * -	BA Input	- * -
B Input	- * -	CB Input	- * -
C Input	- * -	AC Input	- * -
		A-gnd	- * -
		B-gnd	- * -
		C-gnd	- * -
Kilowatt	- * -	Power Factor	- * -
		Date and Time of Measurement	- * -

Conditions

Pressure

Static BHP 417.8 psi (g)
 Static BHP Method Acoustic
 Static BHP Date 12/12/2024
 Producing BHP 396.5 psi (g)
 Producing BHP Method Acoustic
 Producing BHP Date 02/05/2026
 Formation Depth 5630.00 ft

Production

Oil Production - * - BBL/D
 Water Production - * - BBL/D
 Gas Production - * - Mscf/D
 Production Date - * -

Temperatures

Surface Temperature 70 deg F
 Bottomhole Temperature 150 deg F

Surface Producing Pressures

Tubing Pressure - * - psi (g)
 Casing Pressure 355.5 psi (g)

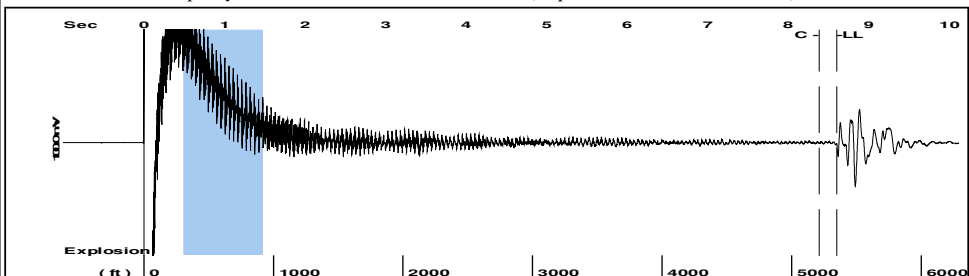
Fluid Properties

Oil API 40 deg API
 Water Specific Gravity 1.05 Sp.Gr.H2O

Casing Pressure Buildup

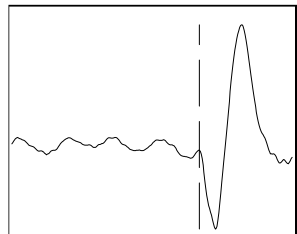
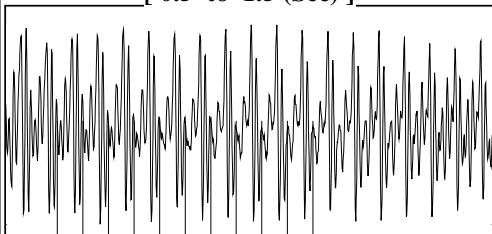
Change in Pressure -0.064 psi
 Over Change in Time 1.00 min

Group: MyWells Well: Lit Trust 3508 6-14H (acquired on: 02/05/26 06:16:17)



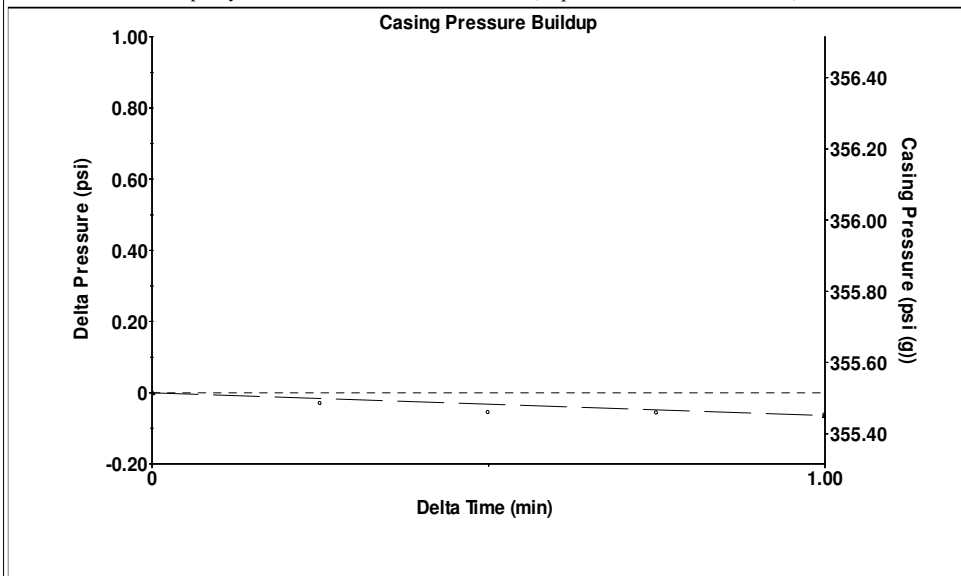
Filter Type High Pass Automatic Collar Count Yes Time 8.607 sec
 Manual Acoustic Veloc 1207.62 ft/s Manual JTS/sec 19.0476 Joints 168.702 Jts
 Depth 5347.86 ft

[0.5 to 1.5 (Sec)]



Analysis Method: Automatic

Group: MyWells Well: Lit Trust 3508 6-14H (acquired on: 02/05/26 06:16:17)

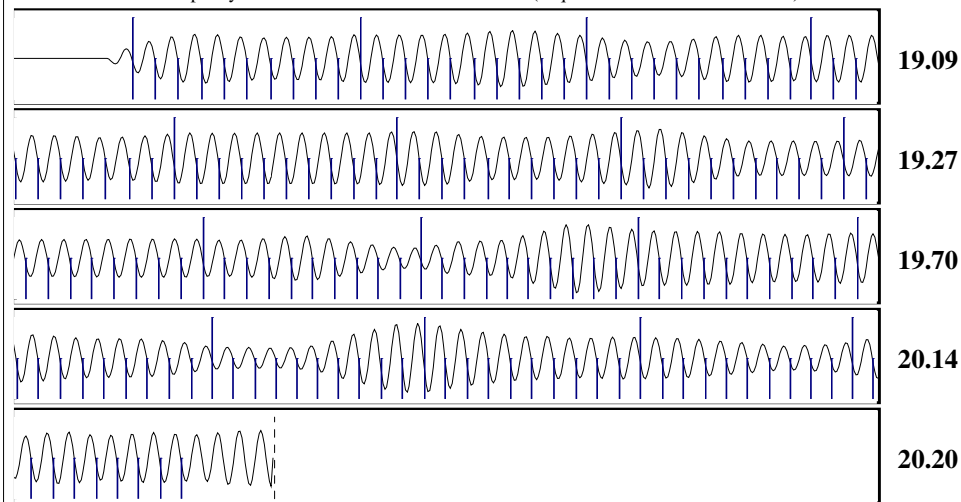


Change in Pressure -0.06 psi PT17591
 Change in Time 1.00 min Range 0 - ? psi

Group: MyWells Well: Lit Trust 3508 6-14H (acquired on: 02/05/26 06:16:17)

<p>Production</p> <p>Current Potential</p> <p>Oil - * - * - BBL/D</p> <p>Water - * - * - BBL/D</p> <p>Gas - * - * - Mscf/D</p> <p>IPR Method Vogel</p> <p>PBHP/SBHP - * -</p> <p>Production Efficiency 0.0</p> <p>Oil 40 deg.API</p> <p>Water 1.05 Sp.Gr.H2O</p> <p>Gas 0.72 Sp.Gr.AIR</p> <p>Acoustic Velocity 1242.68 ft/s</p> <p>Acoustic Test</p>	<p>Casing Pressure 355.5 psi (g)</p> <p>Casing Pressure Buildup -0.064 psi</p> <p>1.00 min</p> <p>Gas/Liquid Interface Pressure 403.0 psi (g)</p> <p>Liquid Level Depth 5347.86 ft</p> <p>Main Depth to Liq Level TVD 4738.24 ft</p> <p>Pump Intake Depth - * - ft</p> <p>Formation Depth 5630.00 ft</p> <p>Formation Depth TVD 4773.24 ft</p>	<p>Static</p> <p>Oil Column Height MD 0 ft TVD 0 ft</p> <p>Water Column Height MD 262 ft TVD 33 ft</p> <p>Static BHP 417.8 psi (g)</p>
---	--	--

Group: MyWells Well: Lit Trust 3508 6-14H (acquired on: 02/05/26 06:16:17)



Acoustic Velocity 1242.68 ft/s Joints counted 159
 Joints Per Second 19.6006 jts/sec Joints to liquid level 168.702
 Depth to liquid level 5347.86 ft Filter Width 17.0476 21.0476
 Automatic Collar Count Yes Time to 1st Collar 0.276 8.388

Conservation Division
District Office No. 2
3450 N. Rock Road
Building 600, Suite 601
Wichita, KS 67226



Phone: 316-337-7400
<http://kcc.ks.gov/>

Andrew J. French, Chairperson
Dwight D. Keen, Commissioner
Annie Kuether, Commissioner

Laura Kelly, Governor

02/18/2026

Leah Medrana
SandRidge Exploration and Production LLC
1 E SHERIDAN AVE STE 500
OKLAHOMA CITY, OK 73104-2494

Re: Temporary Abandonment
API 15-077-21970-01-00
LIT TRUST 3508 6-14H
NE/4 Sec.14-35S-08W
Harper County, Kansas

Dear Leah Medrana:

"Your temporary abandonment (TA) application for the well listed above has been approved. In accordance with K.A.R. 82-3-111 the TA status of this well will expire 04/06/2026.

- * If you return this well to service or plug it, please notify the District Office.
- * If you sell this well you are required to file a Transfer of Operator form, T-1.
- * If the well will remain temporarily abandoned, you must submit a new TA application, CP-111, before 04/06/2026.

You may contact me at the number above if you have questions.

Very truly yours,

Neil Lake - ECRS"