

KANSAS CORPORATION COMMISSION
OIL & GAS CONSERVATION DIVISION

TEMPORARY ABANDONMENT WELL APPLICATION

OPERATOR: License#
Name:
Address 1:
Address 2:
City: State: Zip:
Contact Person:
Phone:
Contact Person Email:
Field Contact Person:
Field Contact Person Phone:

API No. 15-
Spot Description:
Sec. Twp. S. R.
GPS Location: Lat: Long:
Datum: NAD27 NAD83 WGS84
County: Elevation:
Lease Name: Well #:
Well Type: Oil Gas OG WSW Other:
SWD Permit #: ENHR Permit #:
Gas Storage Permit #:
Spud Date: Date Shut-In:

Table with 7 columns: Conductor, Surface, Production, Intermediate, Liner, Tubing. Rows include Size, Setting Depth, Amount of Cement, Top of Cement, Bottom of Cement.

Casing Fluid Level from Surface: How Determined? Date:
Casing Squeeze(s): to w / sacks of cement, to w / sacks of cement. Date:
Do you have a valid Oil & Gas Lease? Yes No
Depth and Type: Junk in Hole at Tools in Hole at Casing Leaks: Yes No Depth of casing leak(s):
Type Completion: ALT. I ALT. II Depth of: DV Tool: w / sacks of cement Port Collar: w / sack of cement
Packer Type: Size: Inch Set at: Feet
Total Depth: Plug Back Depth: Plug Back Method:

Geological Data:

Table with 4 columns: Formation Name, Formation Top, Formation Base, Completion Information. Rows 1 and 2.

UNDER PENALTY OF PERJURY I HEREBY ATTEST THAT THE INFORMATION CONTAINED HEREIN IS TRUE AND CORRECT TO THE BEST OF MY KNOWLEDGE

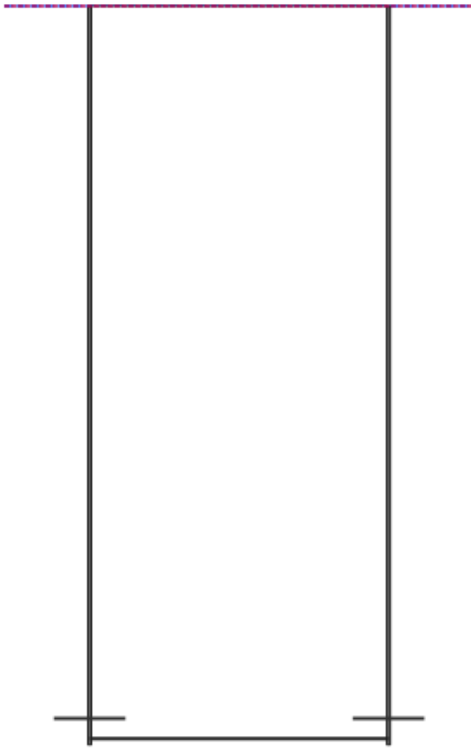
Submitted Electronically

Do NOT Write in This Space - KCC USE ONLY
Date Tested: Results: Date Plugged: Date Repaired: Date Put Back in Service:
Review Completed by: Comments:
TA Approved: Yes Denied Date:

Mail to the Appropriate KCC Conservation Office:

Map of Kansas with 4 numbered districts and corresponding office addresses and phone numbers.

**Producing Shot
Manual Input**



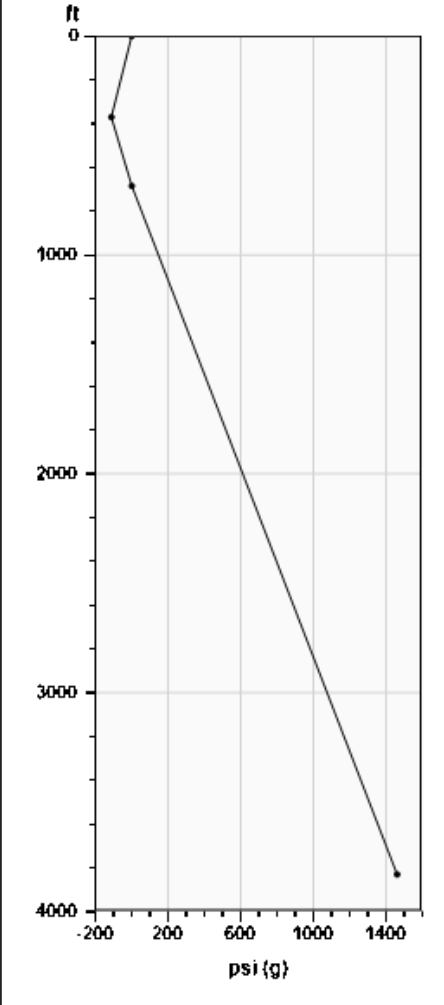
Manually Entered Production

Liquid Level 0 ft
Percent Liquid 100.00%

**Static Bottomhole Pressure
1402.8 psi (g) @ 3704 ft TVD**

Static Liquid Level 684 ft MD
Oil Column Height -314 ft MD
Water Column Height 3334 ft MD

Pressure Profile (TVD)

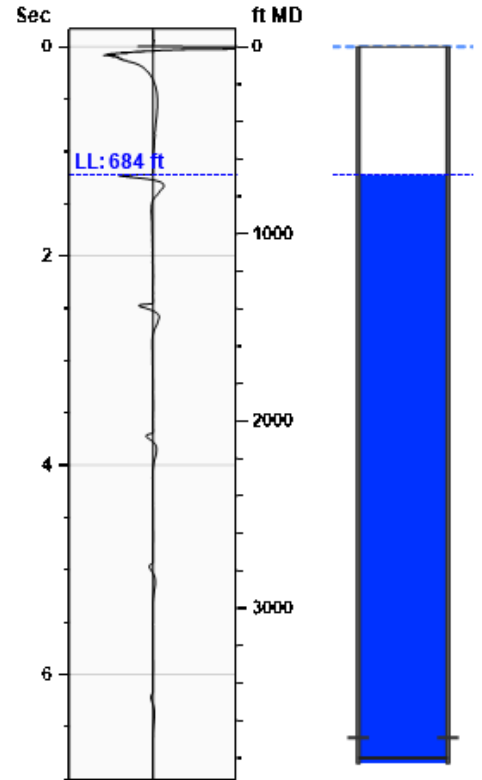


Well Test

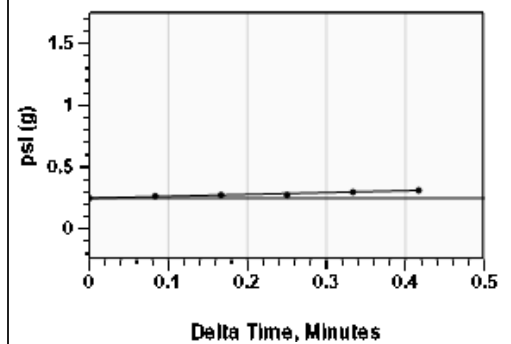
Oil 10 BBL/D
Water 90 BBL/D

**Comments and
Recommendations**

**Static Shot
02/17/2026 02:13:09PM**



Casing Pressure Buildup



Casing Pressure 0.2 psi (g)
Buildup 0.1 psi (g)
Buildup Time 25 sec
Gas Gravity 0.9220 Air = 1

Casing Pressure

Pressure 0.2 psi (g)

Annular Gas Flow

Gas Flow 0.9 Mscf/D

Conservation Division
District Office No. 1
210 E. Frontview, Suite A
Dodge City, KS 67801



Phone: 620-682-7933
<http://kcc.ks.gov/>

Andrew J. French, Chairperson
Dwight D. Keen, Commissioner
Annie Kuether, Commissioner

Laura Kelly, Governor

02/19/2026

Tyler Bell
HG Oil Holdings, LLC
PO BOX 97
PLAINVILLE, KS 67663-0097

Re: Temporary Abandonment
API 15-165-21802-00-00
TAMMEN 2
SW/4 Sec.30-18S-17W
Rush County, Kansas

Dear Tyler Bell:

"Your temporary abandonment (TA) application for the well listed above has been approved. In accordance with K.A.R. 82-3-111 the TA status of this well will expire 02/19/2027.

- * If you return this well to service or plug it, please notify the District Office.
- * If you sell this well you are required to file a Transfer of Operator form, T-1.
- * If the well will remain temporarily abandoned, you must submit a new TA application, CP-111, before 02/19/2027.

You may contact me at the number above if you have questions.

Very truly yours,

Michael Maier"