

KANSAS CORPORATION COMMISSION
OIL & GAS CONSERVATION DIVISION

Form must be Typed
Form must be signed

TEMPORARY ABANDONMENT WELL APPLICATION

All blanks must be complete

OPERATOR: License#
Name:
Address 1:
Address 2:
City: State: Zip:
Contact Person:
Phone:
Contact Person Email:
Field Contact Person:
Field Contact Person Phone:

API No. 15-
Spot Description:
Sec. Twp. S. R.
feet from N / S Line of Section
feet from E / W Line of Section
GPS Location: Lat: , Long:
Datum: NAD27 NAD83 WGS84
County: Elevation: GL KB
Lease Name: Well #:
Well Type: (check one) Oil Gas OG WSW Other:
SWD Permit #: ENHR Permit #:
Gas Storage Permit #:
Spud Date: Date Shut-In:

Table with 7 columns: Conductor, Surface, Production, Intermediate, Liner, Tubing. Rows include Size, Setting Depth, Amount of Cement, Top of Cement, Bottom of Cement.

Casing Fluid Level from Surface: How Determined? Date:
Casing Squeeze(s): to w / sacks of cement, to w / sacks of cement. Date:
Do you have a valid Oil & Gas Lease? Yes No
Depth and Type: Junk in Hole at Tools in Hole at Casing Leaks: Yes No Depth of casing leak(s):
Type Completion: ALT. I ALT. II Depth of: DV Tool: w / sacks of cement Port Collar: w / sack of cement
Packer Type: Size: Inch Set at: Feet
Total Depth: Plug Back Depth: Plug Back Method:

Geological Data:

Table with 4 columns: Formation Name, Formation Top, Formation Base, Completion Information. Rows 1 and 2.

UNDER PENALTY OF PERJURY I HEREBY ATTEST THAT THE INFORMATION CONTAINED HEREIN IS TRUE AND CORRECT TO THE BEST OF MY KNOWLEDGE

Submitted Electronically

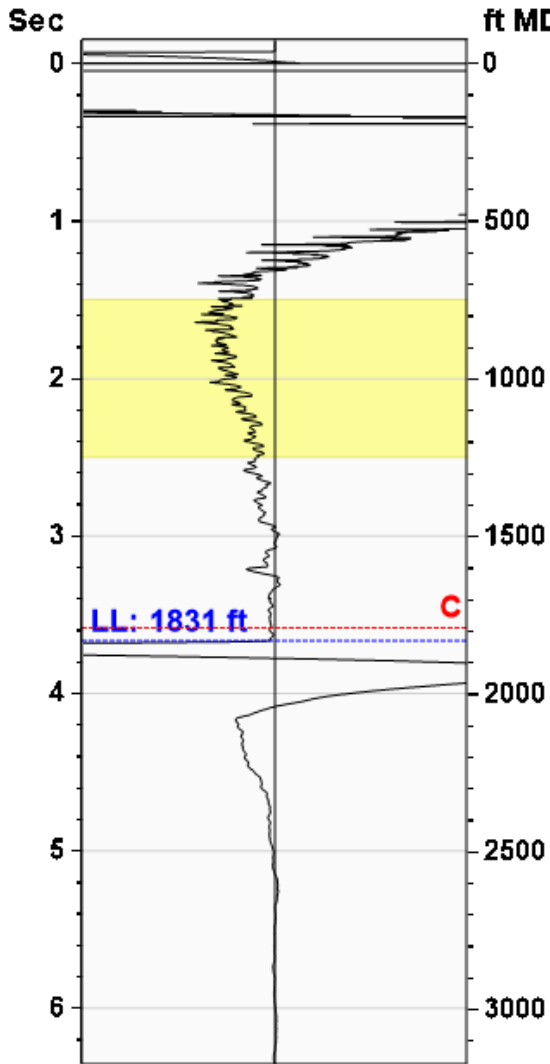
Do NOT Write in This Space - KCC USE ONLY
Date Tested: Results: Date Plugged: Date Repaired: Date Put Back in Service:
Review Completed by: Comments:
TA Approved: Yes Denied Date:

Mail to the Appropriate KCC Conservation Office:

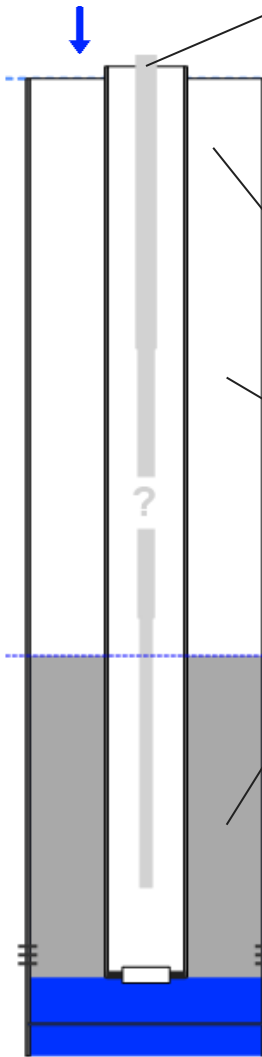
Table with 3 columns: District Office #, Address, Phone. Rows 1-4.

Liquid Level 1831 ft MD

Fluid Above Pump 1012 ft TVD
Equivalent Gas Free Above Pump 1012 ft TVD



Gun - WRFG 1274



Production

| | | | |
|----------------------|----------|-----------|--------|
| Date Entered | 03/03/26 | | |
| | Current | Potential | |
| Oil | ** | ** | BBL/D |
| Water | ** | ** | BBL/D |
| Gas | ** | ** | Mscf/D |
| IPR Method | Vogel | | |
| PBHP/SBHP | -0.00 | | |
| Producing Efficiency | 0.00% | | |

Casing Pressure

| | |
|----------|--------------|
| Pressure | -0.2 psi (g) |
|----------|--------------|

Annular Gas Flow

| | |
|----------|------------|
| Gas Flow | 0.0 Mscf/D |
|----------|------------|

Fluid Properties

| | |
|---------------------|---------|
| % Liquid Above Pump | 100.00% |
| % Liquid Below Pump | ** |

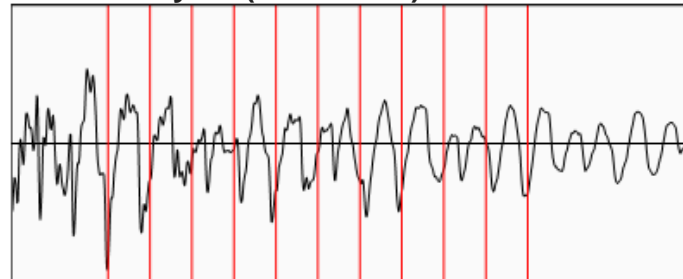
Depths

| | |
|-------------------|---------|
| Pump Intake Depth | 2843 ft |
| Formation Depth | 2834 ft |

Wellbore Pressures

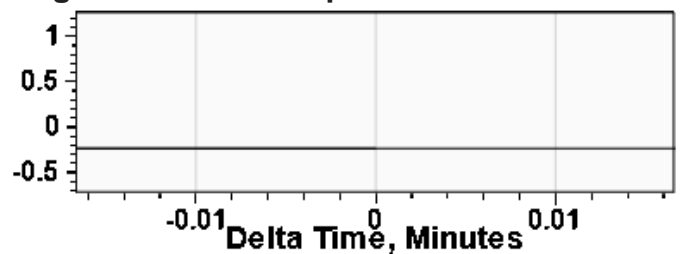
| | |
|-------------------|---------------|
| PIP | 344.7 psi (g) |
| PBHP | 341.7 psi (g) |
| SBHP | ** |
| Gas/Liq Interface | 0.7 psi (g) |

Collar Analysis (Automatic)



Average Acoustic Velocity 999 ft/s
 Average Joints Per Sec. 15.81 Jts/sec
 Joints To Liquid 57.97 Jts

Casing Pressure Buildup



Casing Pressure -0.2 psi (g)
 Buildup 0.0 psi (g)
 Buildup Time 0 sec
 Gas Gravity from Collar Analysis (Automatic) 0.9789 Air = 1

Comments and Recommendations

shot at 300 psi

Conservation Division
District Office No. 1
210 E. Frontview, Suite A
Dodge City, KS 67801



Phone: 620-682-7933
<http://kcc.ks.gov/>

Andrew J. French, Chairperson
Dwight D. Keen, Commissioner
Annie Kuether, Commissioner

Laura Kelly, Governor

03/04/2026

JESSICA MCLAIN
BCE-Mach LLC
14201 WIRELESS WAY, SUITE 300
OKLAHOMA CITY, OK 73134-2521

Re: Temporary Abandonment
API 15-055-20355-00-00
JOSS 2
NE/4 Sec.36-23S-34W
Finney County, Kansas

Dear JESSICA MCLAIN:

"Your temporary abandonment (TA) application for the well listed above has been approved. In accordance with K.A.R. 82-3-111 the TA status of this well will expire 03/04/2027.

- * If you return this well to service or plug it, please notify the District Office.
- * If you sell this well you are required to file a Transfer of Operator form, T-1.
- * If the well will remain temporarily abandoned, you must submit a new TA application, CP-111, before 03/04/2027.

You may contact me at the number above if you have questions.

Very truly yours,

Michael Maier"