

KANSAS CORPORATION COMMISSION
OIL & GAS CONSERVATION DIVISION

TEMPORARY ABANDONMENT WELL APPLICATION

OPERATOR: License# _____
 Name: _____
 Address 1: _____
 Address 2: _____
 City: _____ State: _____ Zip: _____ + _____
 Contact Person: _____
 Phone: (_____) _____
 Contact Person Email: _____
 Field Contact Person: _____
 Field Contact Person Phone: (_____) _____

API No. 15- _____
 Spot Description: _____
 _____ - _____ - _____ - _____ Sec. _____ Twp. _____ S. R. _____ E W
 _____ feet from N / S Line of Section
 _____ feet from E / W Line of Section
 GPS Location: Lat: _____, Long: _____
(e.g. xx.xxxxx) (e.g. -xxx.xxxxx)
 Datum: NAD27 NAD83 WGS84
 County: _____ Elevation: _____ GL KB
 Lease Name: _____ Well #: _____
 Well Type: (check one) Oil Gas OG WSW Other: _____
 SWD Permit #: _____ ENHR Permit #: _____
 Gas Storage Permit #: _____
 Spud Date: _____ Date Shut-In: _____

| | Conductor | Surface | Production | Intermediate | Liner | Tubing |
|------------------|-----------|---------|------------|--------------|-------|--------|
| Size | | | | | | |
| Setting Depth | | | | | | |
| Amount of Cement | | | | | | |
| Top of Cement | | | | | | |
| Bottom of Cement | | | | | | |

Casing Fluid Level from Surface: _____ How Determined? _____ Date: _____
 Casing Squeeze(s): _____ to _____ w / _____ sacks of cement, _____ to _____ w / _____ sacks of cement. Date: _____
(top) (bottom) (top) (bottom)
 Do you have a valid Oil & Gas Lease? Yes No
 Depth and Type: Junk in Hole at _____ Tools in Hole at _____ Casing Leaks: Yes No Depth of casing leak(s): _____
(depth) (depth)
 Type Completion: ALT. I ALT. II Depth of: DV Tool: _____ w / _____ sacks of cement Port Collar: _____ w / _____ sack of cement
(depth) (depth)
 Packer Type: _____ Size: _____ Inch Set at: _____ Feet
 Total Depth: _____ Plug Back Depth: _____ Plug Back Method: _____

Geological Data:

| Formation Name | Formation Top | Formation Base | Completion Information |
|----------------|---------------|----------------|--|
| 1. _____ | At: _____ | to _____ Feet | Perforation Interval _____ to _____ Feet or Open Hole Interval _____ to _____ Feet |
| 2. _____ | At: _____ | to _____ Feet | Perforation Interval _____ to _____ Feet or Open Hole Interval _____ to _____ Feet |

UNDER PENALTY OF PERJURY I HEREBY ATTEST THAT THE INFORMATION CONTAINED HEREIN IS TRUE AND CORRECT TO THE BEST OF MY KNOWLEDGE

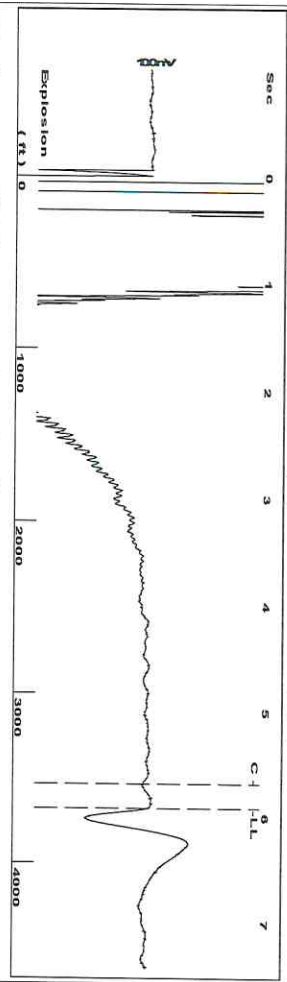
Submitted Electronically

| | | | | | |
|---|--|----------------|---------------------|----------------------|---------------------------------|
| Do NOT Write in This Space - KCC USE ONLY | Date Tested: _____ | Results: _____ | Date Plugged: _____ | Date Repaired: _____ | Date Put Back in Service: _____ |
| | Review Completed by: _____ Comments: _____ | | | | |
| TA Approved: <input type="checkbox"/> Yes <input type="checkbox"/> Denied Date: _____ | | | | | |

Mail to the Appropriate KCC Conservation Office:

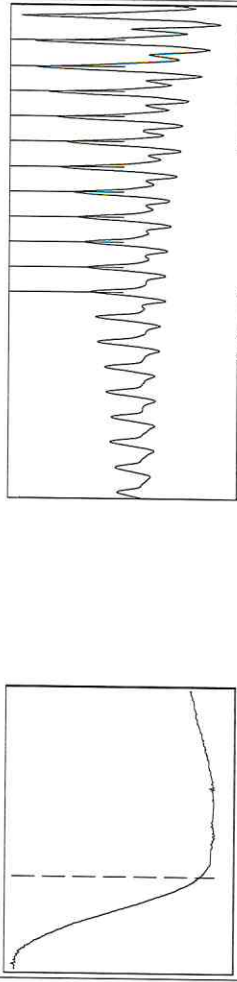
| | | |
|--|--|--------------------|
|  | KCC District Office #1 - 210 E. Frontview, Suite A, Dodge City, KS 67801 | Phone 620.682.7933 |
| | KCC District Office #2 - 3450 N. Rock Road, Building 600, Suite 601, Wichita, KS 67226 | Phone 316.337.7400 |
| | KCC District Office #3 - 137 E. 21st St., Chanute, KS 66720 | Phone 620.902.6450 |
| | KCC District Office #4 - 2301 E. 13th Street, Hays, KS 67601-2651 | Phone 785.261.6250 |

Group: Atlas Well: Green 9 (acquired on: 02/22/26 15:04:42)



Filter Type High Pass Automatic Collar Count Yes
 Manual Acoustic Velo 238.28 ft/s Manual JTS/sec 19.5312
 Time 5.917 sec
 Joints 116.063 Jts
 Depth 3679.18 ft

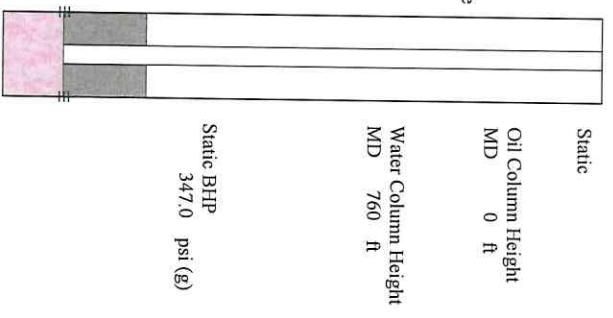
1.00 to 2.00 (Sec)



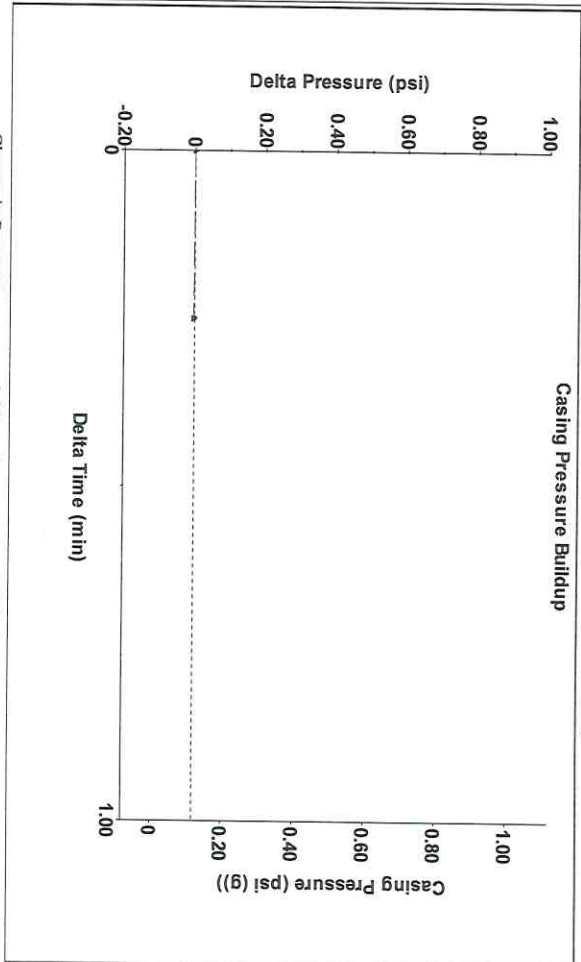
Analysis Method: Automatic

Group: Atlas Well: Green 9 (acquired on: 02/22/26 15:04:42)

| Production | Potential | Casing Pressure | Static |
|-----------------------|-------------|-------------------------------|---------------------|
| Oil Current | BBL/D | 0.1 psi (g) | Oil Column Height |
| Water | BBL/D | -0.003 psi | MID 0 ft |
| Gas | Misc/D | 0.25 min | Water Column Height |
| IPR Method | Vogel | Gas/Liquid Interface Pressure | MID 760 ft |
| PBHP/SBHP | | 1.6 psi (g) | Static BHP |
| Production Efficiency | 0.0 | Liquid Level Depth | 347.0 psi (g) |
| Oil 40 deg API | | 3679.18 ft | |
| Water 1.05 Sp Gr H2O | | Pump Intake Depth | |
| Gas 0.76 Sp Gr AIR | | 4460.00 ft | |
| Acoustic Velocity | 1243.6 ft/s | Formation Depth | |
| | | 4449.00 ft | |

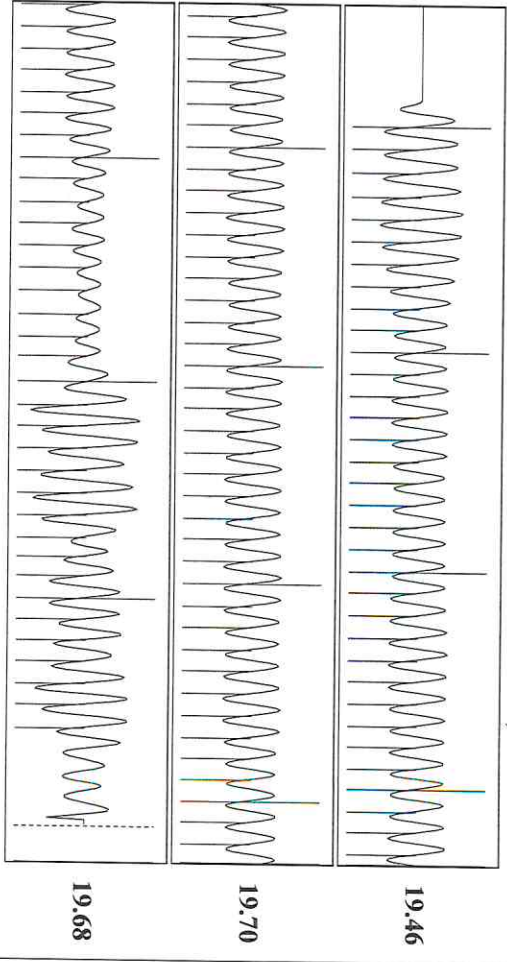


Group: Atlas Well: Green 9 (acquired on: 02/22/26 15:04:42)



Change in Pressure -0.00 psi PT4212
 Change in Time 0.25 min Range

Group: Atlas Well: Green 9 (acquired on: 02/22/26 15:04:42)



| Acoustic Velocity | 1243.6 ft/s | Joints counted | 106 |
|------------------------|-----------------|------------------------|---------|
| Joints Per Second | 19.6151 jts/sec | Joints to liquid level | 116.063 |
| Depth to liquid level | 3679.18 ft | Filter Width | 17.5312 |
| Automatic Collar Count | Yes | Time to 1st Collar | 0.28 |
| | | | 5.684 |

Conservation Division
District Office No. 2
3450 N. Rock Road
Building 600, Suite 601
Wichita, KS 67226



Phone: 316-337-7400
<http://kcc.ks.gov/>

Andrew J. French, Chairperson
Dwight D. Keen, Commissioner
Annie Kuether, Commissioner

Laura Kelly, Governor

03/09/2026

Saumyadeep Halder
Atlas Operating LLC
1900 ST JAMES PLACE SUITE 800
HOUSTON, TX 77056-4133

Re: Temporary Abandonment
API 15-077-21724-00-00
GREEN 9
SE/4 Sec.29-31S-09W
Harper County, Kansas

Dear Saumyadeep Halder:

"Your temporary abandonment (TA) application for the well listed above has been approved. In accordance with K.A.R. 82-3-111 the TA status of this well will expire 03/09/2027.

- * If you return this well to service or plug it, please notify the District Office.
- * If you sell this well you are required to file a Transfer of Operator form, T-1.
- * If the well will remain temporarily abandoned, you must submit a new TA application, CP-111, before 03/09/2027.

You may contact me at the number above if you have questions.

Very truly yours,

Neil Lake - ECRS"