

KANSAS CORPORATION COMMISSION
OIL & GAS CONSERVATION DIVISION

TEMPORARY ABANDONMENT WELL APPLICATION

OPERATOR: License#
Name:
Address 1:
Address 2:
City: State: Zip:
Contact Person:
Phone:
Contact Person Email:
Field Contact Person:
Field Contact Person Phone:

API No. 15-
Spot Description:
Sec. Twp. S. R.
GPS Location: Lat, Long
Datum: NAD27, NAD83, WGS84
County: Elevation:
Lease Name: Well #:
Well Type: Oil, Gas, OG, WSW, Other
SWD Permit #: ENHR Permit #:
Gas Storage Permit #:
Spud Date: Date Shut-In:

Table with 7 columns: Conductor, Surface, Production, Intermediate, Liner, Tubing. Rows include Size, Setting Depth, Amount of Cement, Top of Cement, Bottom of Cement.

Casing Fluid Level from Surface: How Determined? Date:
Casing Squeeze(s): to w / sacks of cement, to w / sacks of cement. Date:
Do you have a valid Oil & Gas Lease? Yes No
Depth and Type: Junk in Hole at Tools in Hole at Casing Leaks: Yes No Depth of casing leak(s):
Type Completion: ALT. I ALT. II Depth of: DV Tool: w / sacks of cement Port Collar: w / sack of cement
Packer Type: Size: Inch Set at: Feet
Total Depth: Plug Back Depth: Plug Back Method:

Geological Date:

Table with 4 columns: Formation Name, Formation Top, Formation Base, Completion Information. Rows 1 and 2.

UNDER PENALTY OF PERJURY I HEREBY ATTEST THAT THE INFORMATION CONTAINED HEREIN IS TRUE AND CORRECT TO THE BEST OF MY KNOWLEDGE

Submitted Electronically

Do NOT Write in This Space - KCC USE ONLY
Date Tested: Results: Date Plugged: Date Repaired: Date Put Back in Service:
Review Completed by: Comments:
TA Approved: Yes Denied Date:

Mail to the Appropriate KCC Conservation Office:

Table with 3 columns: District Office #, Address, Phone. Rows 1-4.

General

Well ID Charles 3306 3-28H FL
 Well Charles 3306 3-28H FL
 Company SD
 Operator Kelly Snow
 Lease Name Charles 3306 3-28H FL
 Elevation 0.00 ft
 Production Method Electrical Submersible Pump

Comment

Tubulars

Tubing OD 2.875 in
 Average Joint Length 31.700 ft
 Sliding Sleeve - * - ft
 Casing OD 7.000 in
 Liner OD - * - in
 Top of Liner - * - ft
 PBTD - * - ft
 Kelly Bushing 0.00 ft

Pump Assembly

Installation Date - * -
 Pump Intake Depth 5009.00 ft
 PIP Gage - * - ft

Gas Separator

Gas Separator Not Used
 Tubing Discharge Temp - * - deg F

Pump Configuration

| | Top Pump | Pump 2 | Pump 3 | Pump 4 | Pump 5 |
|-------------------------|----------|--------|--------|--------|--------|
| Pump Manufacturer | - * - | - * - | - * - | - * - | - * - |
| Pump Description/Series | - * - | - * - | - * - | - * - | - * - |
| Serial Number | - * - | - * - | - * - | - * - | - * - |
| Stage Count | 0 | 0 | 0 | 0 | 0 |
| Pump Housing | - * - | - * - | - * - | - * - | - * - |

Total Length of Pump Assembly - * - ft
 Shroud is Not Used

Electric Equipment

Control Panel - * -
 Variable Frequency is Not Used
 Overload Set Point - * -
 Underload Set Point - * -
 Overvoltage Set Point - * -
 Undervoltage Set Point - * -
 Frequency - * -
 Pump Up Time - * -

Cable Data

Round Cable Type - * -
 Round Cable Length - * - ft
 Flat Cable Type - * -
 Flat Cable Length - * - ft

Electrical Cost

Cost Per kW-Hour - * -
 Cost Per kW - * -

Motor Assembly Description

| | Top Motor | Motor 2 | Motor 3 | Motor 4 |
|--------------------------------|-----------|---------|-------------------|---------|
| Manufacturer | - * - | - * - | - * - | - * - |
| Series | - * - | - * - | - * - | - * - |
| Type | - * - | - * - | - * - | - * - |
| HP | - * - | - * - | - * - | - * - |
| Volts/Amps | - * - | - * - | - * - | - * - |
| Total Length of Motor Assembly | - * - ft | | Installation Date | - * - |

Electrical Parameters

| AMPS | VOLTS | |
|----------------|--------------------|------------------------------------|
| A Input - * - | BA Input - * - | A-gnd - * - |
| B Input - * - | CB Input - * - | B-gnd - * - |
| C Input - * - | AC Input - * - | C-gnd - * - |
| Kilowatt - * - | Power Factor - * - | Date and Time of Measurement - * - |

Conditions

Pressure

Static BHP 635.1 psi (g)
 Static BHP Method Acoustic
 Static BHP Date 03/10/2025
 Producing BHP 615.6 psi (g)
 Producing BHP Method Acoustic
 Producing BHP Date 02/23/2026
 Formation Depth 5009.00 ft

Production

Oil Production - * - BBL/D
 Water Production - * - BBL/D
 Gas Production - * - Mscf/D
 Production Date - * -

Temperatures

Surface Temperature 70 deg F
 Bottomhole Temperature 150 deg F

Surface Producing Pressures

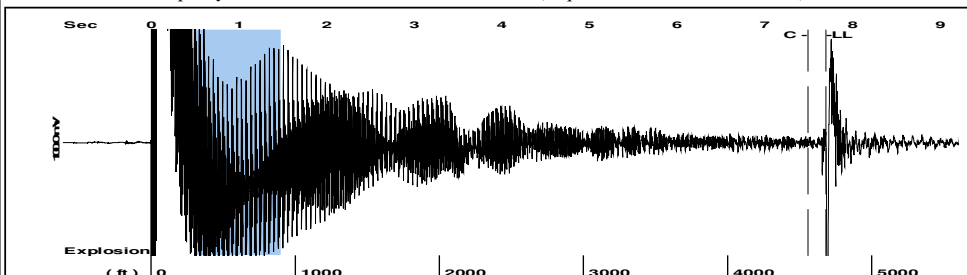
Tubing Pressure - * - psi (g)
 Casing Pressure 505.0 psi (g)

Fluid Properties

Oil API 40 deg API
 Water Specific Gravity 1.05 Sp.Gr.H2O

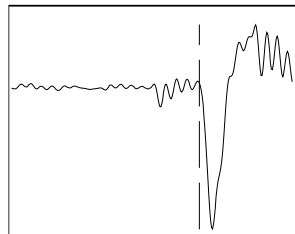
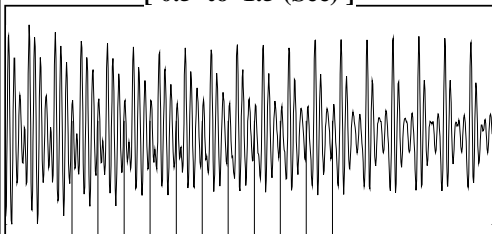
Casing Pressure Buildup

Change in Pressure -0.021 psi
 Over Change in Time 1.00 min

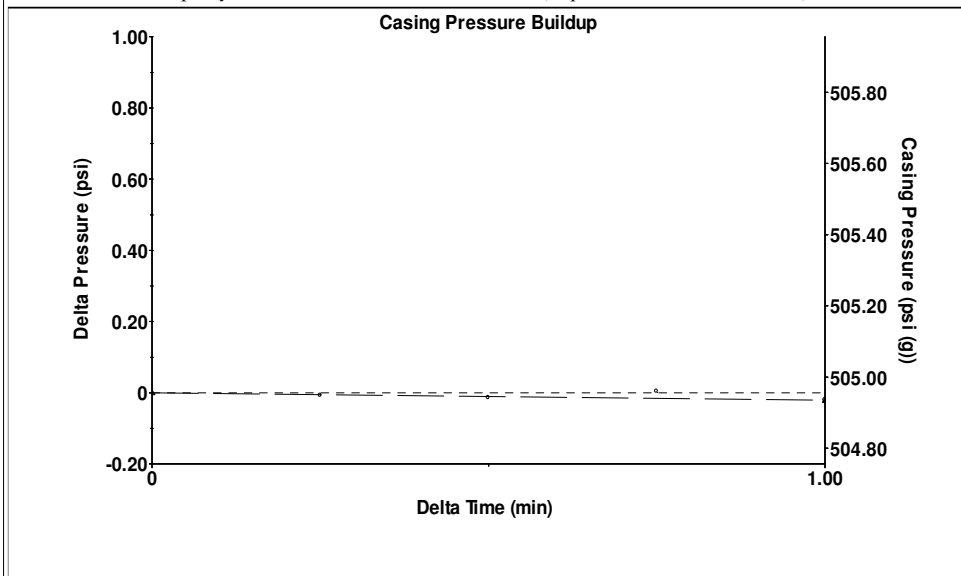


Filter Type High Pass Automatic Collar Count Yes Time 7.698 sec
 Manual Acoustic Veloc 1185.05 ft/s Manual JTS/sec 18.6916 Joints 147.711 Jts
 Depth 4682.45 ft

[0.5 to 1.5 (Sec)]

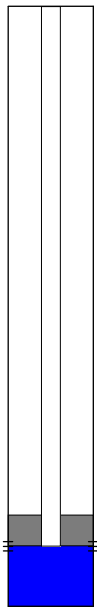


Analysis Method: Automatic

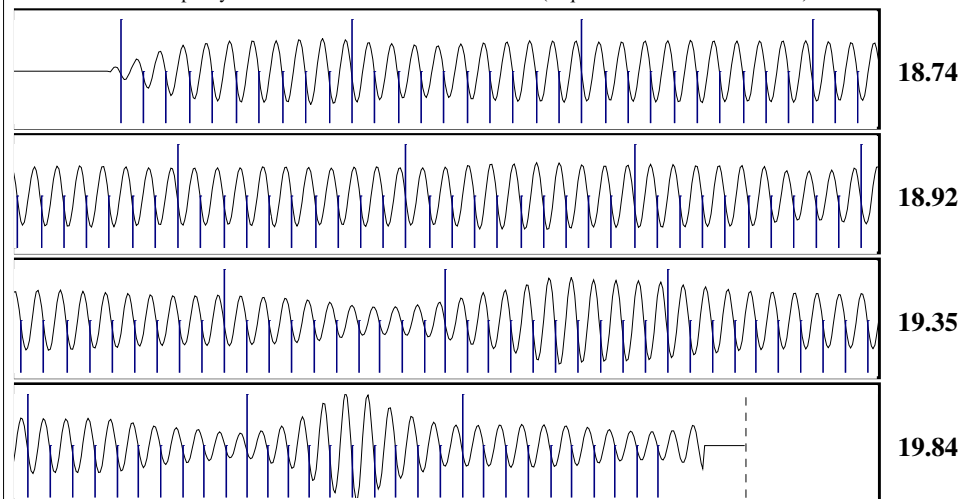


Change in Pressure -0.02 psi PT17591
 Change in Time 1.00 min Range 0 - ? psi

| | | | |
|-----------------------|------|-----------------------------|-------------------------------|
| Production | | Potential | Casing Pressure |
| Current | | | 505.0 psi (g) |
| Oil - *- | - *- | BBL/D | Casing Pressure Buildup |
| Water - *- | - *- | BBL/D | -0.021 psi |
| Gas - *- | - *- | Mscf/D | 1.00 min |
| IPR Method | | Vogel | Gas/Liquid Interface Pressure |
| PBHP/SBHP | | - *- | 567.9 psi (g) |
| Production Efficiency | | 0.0 | |
| Oil 40 deg.API | | Liquid Level Depth | |
| Water 1.05 Sp.Gr.H2O | | 4682.45 ft | |
| Gas 0.73 Sp.Gr.AIR | | Main Depth to Liq Level TVD | |
| | | 4307.70 ft | |
| | | Pump Intake Depth | |
| | | 5009.00 ft | |
| | | Formation Depth | |
| | | 5009.00 ft | |
| | | Formation Depth TVD | |
| | | 4455.46 ft | |



Static
 Oil Column Height
 MD 0 ft
 TVD 0 ft
 Water Column Height
 MD 327 ft
 TVD 148 ft
 Static BHP
 635.1 psi (g)



| | | | |
|------------------------|-----------------|------------------------|-----------------|
| Acoustic Velocity | 1216.54 ft/s | Joints counted | 139 |
| Joints Per Second | 19.1883 jts/sec | Joints to liquid level | 147.711 |
| Depth to liquid level | 4682.45 ft | Filter Width | 16.6916 20.6916 |
| Automatic Collar Count | Yes | Time to 1st Collar | 0.248 7.492 |

Conservation Division
District Office No. 2
3450 N. Rock Road
Building 600, Suite 601
Wichita, KS 67226



Phone: 316-337-7400
<http://kcc.ks.gov/>

Andrew J. French, Chairperson
Dwight D. Keen, Commissioner
Annie Kuether, Commissioner

Laura Kelly, Governor

03/24/2026

Leah Medrana
SandRidge Exploration and Production LLC
1 E SHERIDAN AVE STE 500
OKLAHOMA CITY, OK 73104-2494

Re: Temporary Abandonment
API 15-077-22011-01-00
CHARLES 3306 3-28H
NE/4 Sec.33-33S-06W
Harper County, Kansas

Dear Leah Medrana:

"Your temporary abandonment (TA) application for the well listed above has been approved. In accordance with K.A.R. 82-3-111 the TA status of this well will expire 03/24/2027.

- * If you return this well to service or plug it, please notify the District Office.
- * If you sell this well you are required to file a Transfer of Operator form, T-1.
- * If the well will remain temporarily abandoned, you must submit a new TA application, CP-111, before 03/24/2027.

You may contact me at the number above if you have questions.

Very truly yours,

Neil Lake - ECRS"