

KANSAS CORPORATION COMMISSION
OIL & GAS CONSERVATION DIVISION

Form must be Typed
Form must be signed

TEMPORARY ABANDONMENT WELL APPLICATION

All blanks must be complete

OPERATOR: License#
Name:
Address 1:
Address 2:
City: State: Zip:
Contact Person:
Phone:
Contact Person Email:
Field Contact Person:
Field Contact Person Phone:

API No. 15-
Spot Description:
Sec. Twp. S. R.
feet from N / S Line of Section
feet from E / W Line of Section
GPS Location: Lat: , Long:
Datum: NAD27 NAD83 WGS84
County: Elevation: GL KB
Lease Name: Well #:
Well Type: (check one) Oil Gas OG WSW Other:
SWD Permit #: ENHR Permit #:
Gas Storage Permit #:
Spud Date: Date Shut-In:

Table with 7 columns: Conductor, Surface, Production, Intermediate, Liner, Tubing. Rows include Size, Setting Depth, Amount of Cement, Top of Cement, Bottom of Cement.

Casing Fluid Level from Surface: How Determined? Date:
Casing Squeeze(s): to w / sacks of cement, to w / sacks of cement. Date:
Do you have a valid Oil & Gas Lease? Yes No
Depth and Type: Junk in Hole at Tools in Hole at Casing Leaks: Yes No Depth of casing leak(s):
Type Completion: ALT. I ALT. II Depth of: DV Tool: w / sacks of cement Port Collar: w / sack of cement
Packer Type: Size: Inch Set at: Feet
Total Depth: Plug Back Depth: Plug Back Method:

Geological Data:

Table with 4 columns: Formation Name, Formation Top, Formation Base, Completion Information. Rows 1 and 2.

UNDER PENALTY OF PERJURY I HEREBY ATTEST THAT THE INFORMATION CONTAINED HEREIN IS TRUE AND CORRECT TO THE BEST OF MY KNOWLEDGE

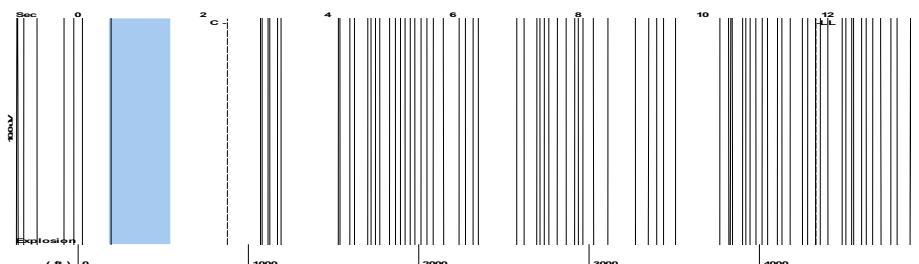
Submitted Electronically

Do NOT Write in This Space - KCC USE ONLY
Date Tested: Results: Date Plugged: Date Repaired: Date Put Back in Service:
Review Completed by: Comments:
TA Approved: Yes Denied Date:

Mail to the Appropriate KCC Conservation Office:

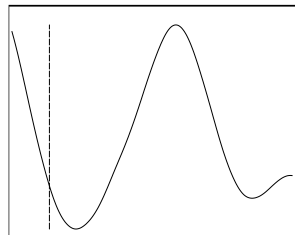
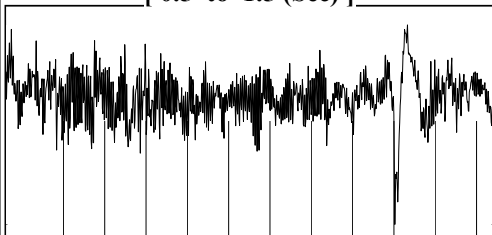
Table with 2 columns: Office Address, Phone. Rows for District Office #1, #2, #3, #4.

Group: MyWells Well: MCQUILLEN TRUST # 19-1 (acquired on: 03/27/26 11:58:52)



Filter Type High Pass Automatic Collar Count Yes Time 11.806 sec
 Manual Acoustic Veloc 746.761 ft/s Manual JTS/sec 11.7786 Joints 136.644 Jts
 Depth 4331.60 ft

[0.5 to 1.5 (Sec)]



Analysis Method: Automatic

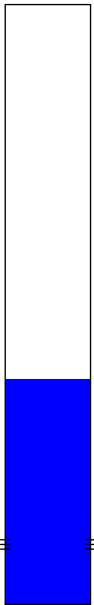
Group: MyWells Well: MCQUILLEN TRUST # 19-1 (acquired on: 03/27/26 11:58:52)



Change in Pressure 0.00 psi PT13682
 Range 0 - ? psi
 Change in Time 0.00 min

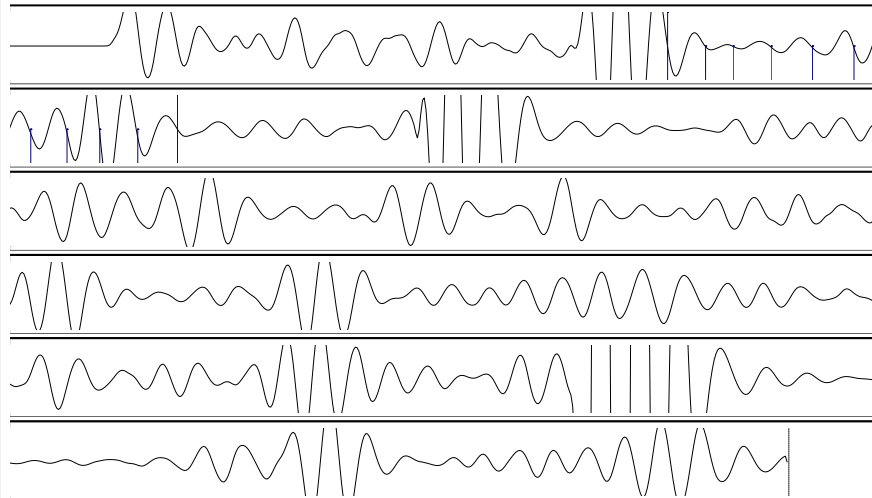
Group: MyWells Well: MCQUILLEN TRUST # 19-1 (acquired on: 03/27/26 11:58:52)

Production Current	Potential	Casing Pressure
Oil - * -	- * - BBL/D	95.4 psi (g)
Water - * -	- * - BBL/D	Casing Pressure Buildup
Gas - * -	- * - Mscf/D	- * - psi
		- * - min
IPR Method	Vogel	Gas/Liquid Interface Pressure
PBHP/SBHP	- * -	- * - psi (g)
Production Efficiency	0.0	
Oil 40 deg.API		Liquid Level Depth
Water 1.05 Sp.Gr.H2O		4331.60 ft
Gas 1.20 Sp.Gr.AIR		Pump Intake Depth
		- * - ft
Acoustic Velocity	733.796 ft/s	Formation Depth
		6600.00 ft
Formation Submergence		
Total Gaseous Liquid Column HT (TVD)		- * - ft
Equivalent Gas Free Liquid HT (TVD)		- * - ft



Producing
 Annular Gas Flow - * - Mscf/D
 % Liquid 100 %
 Pump Intake - * - psi (g)
 Producing BHP - * - psi (g)
 Static BHP - * - psi (g)

Group: MyWells Well: MCQUILLEN TRUST # 19-1 (acquired on: 03/27/26 11:58:52)



11.57
 11.57

Acoustic Velocity	733.796 ft/s	Joints counted	10
Joints Per Second	11.5741 jts/sec	Joints to liquid level	136.644
Depth to liquid level	4331.6 ft	Filter Width	9.77856 13.7786
Automatic Collar Count	Yes	Time to 1st Collar	1.524 2.388

04/02/2026

Jorge Torres
Palmer Oil, Inc.
3118 N. CUMMINGS RD.
PO BOX 399
GARDEN CITY, KS 67846-0399

Re: Temporary Abandonment
API 15-175-22057-00-00
MCQUILLEN TRUST 19 #1
SW/4 Sec.19-34S-33W
Seward County, Kansas

Dear Jorge Torres:

"Your temporary abandonment (TA) application for the well listed above has been approved. In accordance with K.A.R. 82-3-111 the TA status of this well will expire 04/02/2027.

- * If you return this well to service or plug it, please notify the District Office.
- * If you sell this well you are required to file a Transfer of Operator form, T-1.
- * If the well will remain temporarily abandoned, you must submit a new TA application, CP-111, before 04/02/2027.

You may contact me at the number above if you have questions.

Very truly yours,

Michael Maier"