

KANSAS CORPORATION COMMISSION
OIL & GAS CONSERVATION DIVISION

TEMPORARY ABANDONMENT WELL APPLICATION

OPERATOR: License#
Name:
Address 1:
Address 2:
City: State: Zip:
Contact Person:
Phone:
Contact Person Email:
Field Contact Person:
Field Contact Person Phone:

API No. 15-
Spot Description:
Sec. Twp. S. R.
feet from N / S Line of Section
feet from E / W Line of Section
GPS Location: Lat: , Long:
Datum: NAD27 NAD83 WGS84
County: Elevation: GL KB
Lease Name: Well #:
Well Type: Oil Gas OG WSW Other:
SWD Permit #: ENHR Permit #:
Gas Storage Permit #:
Spud Date: Date Shut-In:

Table with 7 columns: Conductor, Surface, Production, Intermediate, Liner, Tubing. Rows include Size, Setting Depth, Amount of Cement, Top of Cement, Bottom of Cement.

Casing Fluid Level from Surface: How Determined? Date:
Casing Squeeze(s): to w / sacks of cement, to w / sacks of cement. Date:
Do you have a valid Oil & Gas Lease? Yes No
Depth and Type: Junk in Hole at Tools in Hole at Casing Leaks: Yes No Depth of casing leak(s):
Type Completion: ALT. I ALT. II Depth of: DV Tool: w / sacks of cement Port Collar: w / sack of cement
Packer Type: Size: Inch Set at: Feet
Total Depth: Plug Back Depth: Plug Back Method:

Geological Data:

Table with 4 columns: Formation Name, Formation Top, Formation Base, Completion Information. Rows 1 and 2.

UNDER PENALTY OF PERJURY I HEREBY ATTEST THAT THE INFORMATION CONTAINED HEREIN IS TRUE AND CORRECT TO THE BEST OF MY KNOWLEDGE

Submitted Electronically

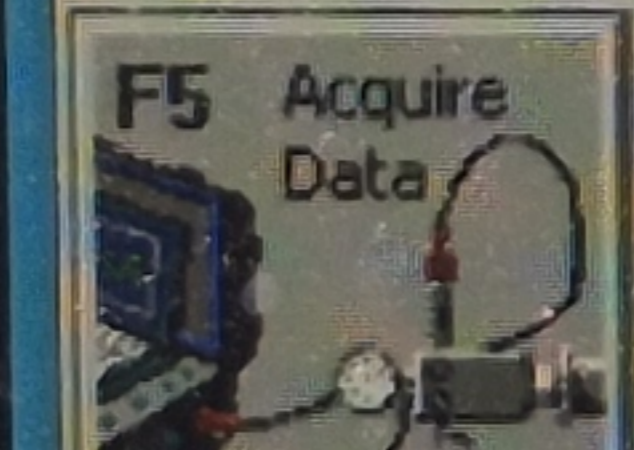
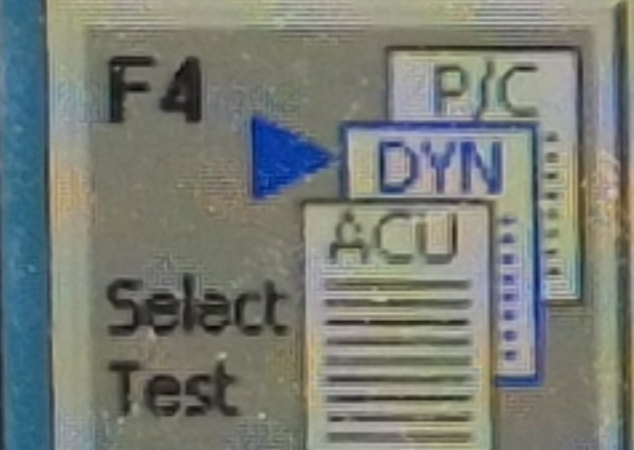
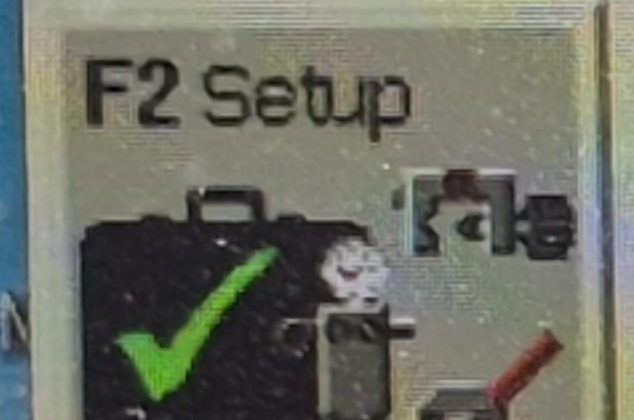
Do NOT Write in This Space - KCC USE ONLY
Date Tested: Results: Date Plugged: Date Repaired: Date Put Back in Service:
Review Completed by: Comments:
TA Approved: Yes Denied Date:

Mail to the Appropriate KCC Conservation Office:

Table with 3 columns: District Office, Address, Phone. Rows for District Office #1, #2, #3, #4.

File Mode Option Tools Help

Acquire Mode  
 Recall Mode



Select Liquid Level | Depth Determination | Casing Pressure  BHP | Collars

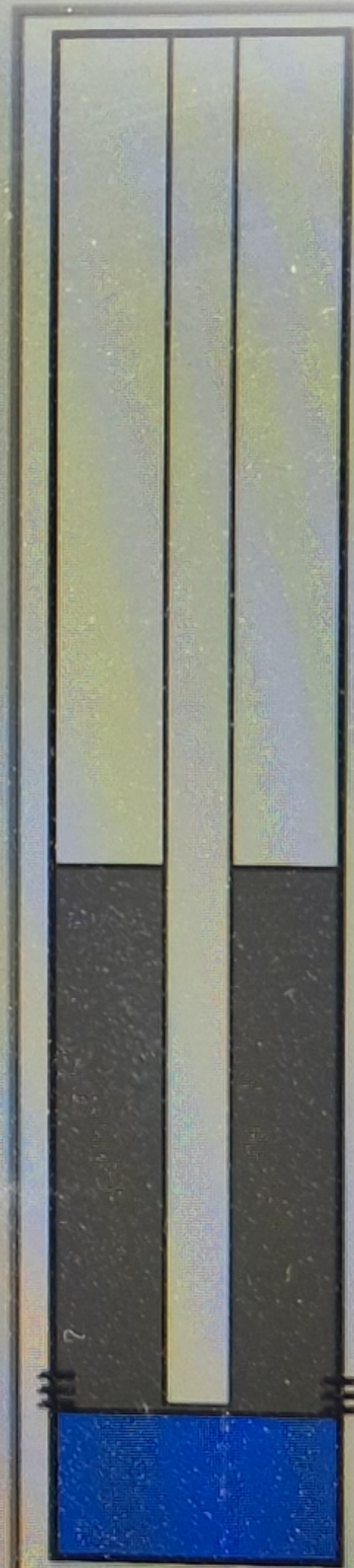
Production	
Current	Potential
Oil	BBL/D
Water	BBL/D
Gas	Mscf/D

IPR Method   
PBHP/SBHP   
Producing Efficiency  %  
Fluid Densities  
Oil  deg.API  
Water  Sp.Gr.H2O  
Gas Gravity  Air = 1  
Acoustic Velocity  ft/s

Pump Submergence  
Total Gaseous Liquid Column HT (TVD)  ft  
Equivalent Gas Free Liquid HT (TVD)  ft

Comment  
Acoustic Test

Casing Pressure  psi (g)  
Casing Pressure Buildup  psi  
 min  
Gas/Liquid Interface Pres.  psi (g)  
Liquid Level Depth  
MD  ft  
Pump Intake Depth  
MD  ft  
TVD   
Formation Depth  
MD  ft



Well State:

Annular Gas Flow  Mscf/D  
% Liquid

Pump Intake Pressure  psi (g)  
PBHP  psi (g)  
Reservoir Pressure (SBHP)  psi (g)

< Pg Up | Pg Dwn >

04/02/2026

Melissa Imler  
Casillas Petroleum Corp  
348 ROAD DD  
SATANTA, KS 67870-8775

Re: Temporary Abandonment  
API 15-071-20859-00-00  
SHELTON 2X  
SW/4 Sec.36-17S-40W  
Greeley County, Kansas

Dear Melissa Imler:

"Your temporary abandonment (TA) application for the well listed above has been approved. In accordance with K.A.R. 82-3-111 the TA status of this well will expire 04/02/2027.

- \* If you return this well to service or plug it, please notify the District Office.
- \* If you sell this well you are required to file a Transfer of Operator form, T-1.
- \* If the well will remain temporarily abandoned, you must submit a new TA application, CP-111, before 04/02/2027.

You may contact me at the number above if you have questions.

Very truly yours,

Michael Maier"