

KANSAS CORPORATION COMMISSION
OIL & GAS CONSERVATION DIVISION

TEMPORARY ABANDONMENT WELL APPLICATION

OPERATOR: License#
Name:
Address 1:
Address 2:
City: State: Zip:
Contact Person:
Phone:
Contact Person Email:
Field Contact Person:
Field Contact Person Phone:

API No. 15-
Spot Description:
Sec. Twp. S. R.
GPS Location: Lat: Long:
Datum: NAD27 NAD83 WGS84
County: Elevation:
Lease Name: Well #:
Well Type: Oil Gas OG WSW Other:
SWD Permit #: ENHR Permit #:
Gas Storage Permit #:
Spud Date: Date Shut-In:

Table with 7 columns: Conductor, Surface, Production, Intermediate, Liner, Tubing. Rows include Size, Setting Depth, Amount of Cement, Top of Cement, Bottom of Cement.

Casing Fluid Level from Surface: How Determined? Date:
Casing Squeeze(s): to w / sacks of cement, to w / sacks of cement. Date:
Do you have a valid Oil & Gas Lease? Yes No
Depth and Type: Junk in Hole at Tools in Hole at Casing Leaks: Yes No Depth of casing leak(s):
Type Completion: ALT. I ALT. II Depth of: DV Tool: w / sacks of cement Port Collar: w / sack of cement
Packer Type: Size: Inch Set at: Feet
Total Depth: Plug Back Depth: Plug Back Method:

Geological Date:

Table with 4 columns: Formation Name, Formation Top, Formation Base, Completion Information. Rows 1 and 2.

UNDER PENALTY OF PERJURY I HEREBY ATTEST THAT THE INFORMATION CONTAINED HEREIN IS TRUE AND CORRECT TO THE BEST OF MY KNOWLEDGE

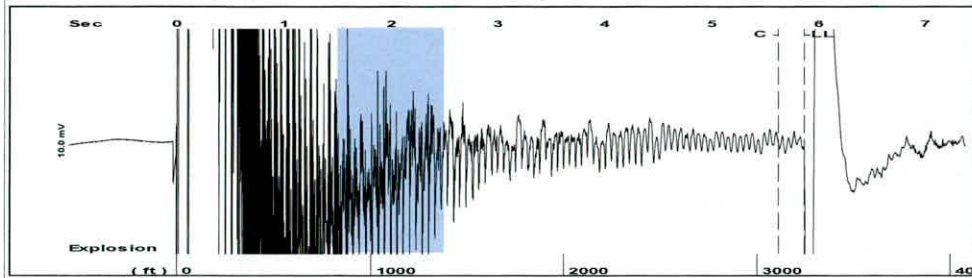
Submitted Electronically

Do NOT Write in This Space - KCC USE ONLY
Date Tested: Results: Date Plugged: Date Repaired: Date Put Back in Service:
Review Completed by: Comments:
TA Approved: Yes Denied Date:

Mail to the Appropriate KCC Conservation Office:

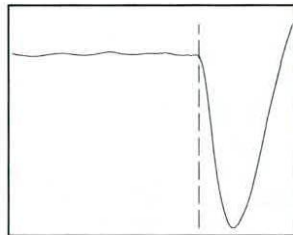
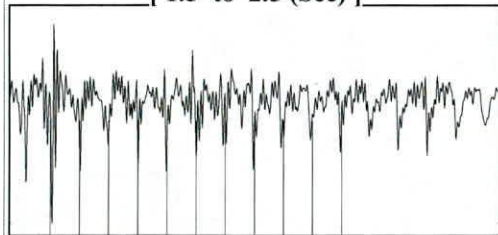
Table with 3 columns: District Office, Address, Phone. Rows for District Office #1, #2, #3, #4.

Group: MyWells Well: Boonedocker 1 (acquired on: 03/25/26 11:05:34)



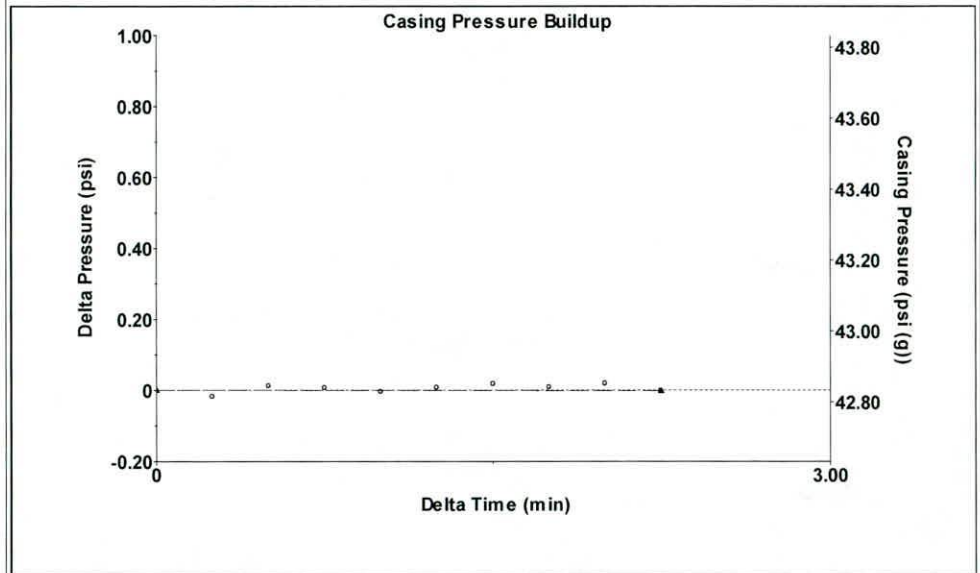
Filter Type High Pass Automatic Collar Count Yes Time 5.866 sec
 Manual Acoustic Velo 1063.07 ft/s Manual JTS/sec 16.8634 Joints 102.951 Jts
 Depth 3245.01 ft

[1.5 to 2.5 (Sec)]



Analysis Method: Automatic

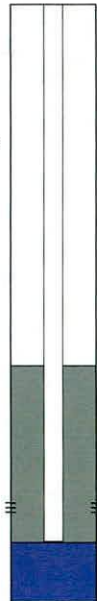
Group: MyWells Well: Boonedocker 1 (acquired on: 03/25/26 11:05:34)



Change in Pressure -0.00 psi PT15565
 Range 0 - ? psi
 Change in Time 2.25 min

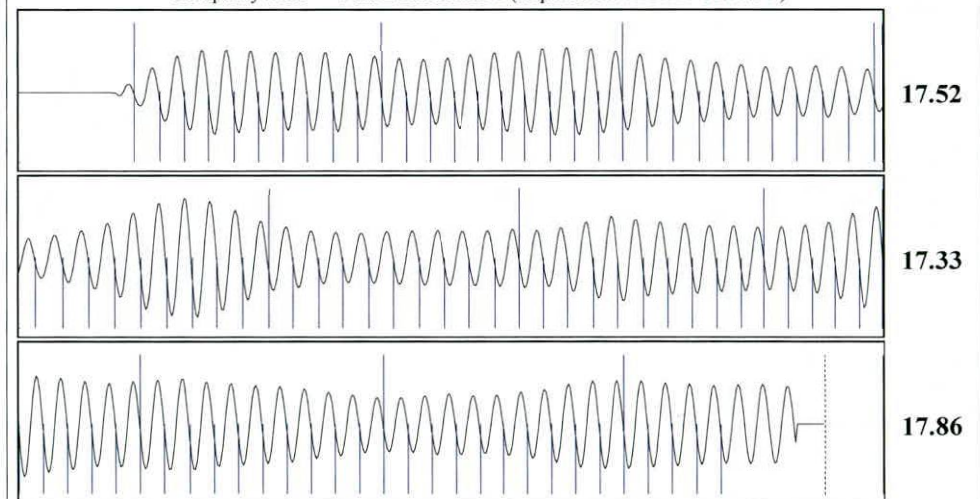
Group: MyWells Well: Boonedocker 1 (acquired on: 03/25/26 11:05:34)

Production			
Current	Potential	Casing Pressure	Producing
Oil - * -	- * - BBL/D	42.8 psi (g)	
Water - * -	- * - BBL/D	Casing Pressure Buildup	Annular
Gas - * -	- * - Mscf/D	-0.002 psi	Gas Flow
		2.25 min	0 Mscf/D
IPR Method	Vogel	Gas/Liquid Interface Pressure	% Liquid
PBHP/SBHP	- * -	48.7 psi (g)	100 %
Production Efficiency	0.0		
		Liquid Level Depth	
Oil 25 deg.API		3245.01 ft	
Water 1.05 Sp.Gr.H2O		Pump Intake Depth	
Gas 0.87 Sp.Gr.AIR		5152.00 ft	
Acoustic Velocity	1106.38 ft/s	Formation Depth	
		4784.00 ft	



Producing
 Annular Gas Flow 0 Mscf/D
 % Liquid 100 %
 Pump Intake 758.1 psi (g)
 Producing BHP 623.1 psi (g)
 Static BHP - * - psi (g)

Group: MyWells Well: Boonedocker 1 (acquired on: 03/25/26 11:05:34)



Acoustic Velocity	1106.38 ft/s	Joints counted	94
Joints Per Second	17.5504 jts/sec	Joints to liquid level	102.951
Depth to liquid level	3245.01 ft	Filter Width	14.8634
Automatic Collar Count	Yes	Time to 1st Collar	0.268

Conservation Division
District Office No. 1
210 E. Frontview, Suite A
Dodge City, KS 67801



Phone: 620-682-7933
<http://kcc.ks.gov/>

Andrew J. French, Chairperson
Dwight D. Keen, Commissioner
Annie Kuether, Commissioner

Laura Kelly, Governor

04/02/2026

Anthony Farrar
Indian Oil Co., Inc.
308 S. Main St.
PO BOX 209
MEDICINE LODGE, KS 67104-0209

Re: Temporary Abandonment
API 15-007-23640-00-00
BOONEDOCKER 1
SE/4 Sec.06-35S-11W
Barber County, Kansas

Dear Anthony Farrar:

"Your temporary abandonment (TA) application for the well listed above has been approved. In accordance with K.A.R. 82-3-111 the TA status of this well will expire 04/02/2027.

- * If you return this well to service or plug it, please notify the District Office.
- * If you sell this well you are required to file a Transfer of Operator form, T-1.
- * If the well will remain temporarily abandoned, you must submit a new TA application, CP-111, before 04/02/2027.

You may contact me at the number above if you have questions.

Very truly yours,

Michael Maier"