

KANSAS CORPORATION COMMISSION
OIL & GAS CONSERVATION DIVISION

Form must be Typed
Form must be signed

TEMPORARY ABANDONMENT WELL APPLICATION

All blanks must be complete

OPERATOR: License#
Name:
Address 1:
Address 2:
City: State: Zip:
Contact Person:
Phone:
Contact Person Email:
Field Contact Person:
Field Contact Person Phone:

API No. 15-
Spot Description:
Sec. Twp. S. R.
GPS Location: Lat: Long:
Datum: NAD27 NAD83 WGS84
County: Elevation:
Lease Name: Well #:
Well Type: Oil Gas OG WSW Other:
SWD Permit #: ENHR Permit #:
Gas Storage Permit #:
Spud Date: Date Shut-In:

Table with 7 columns: Conductor, Surface, Production, Intermediate, Liner, Tubing. Rows include Size, Setting Depth, Amount of Cement, Top of Cement, Bottom of Cement.

Casing Fluid Level from Surface: How Determined? Date:
Casing Squeeze(s): to w / sacks of cement, to w / sacks of cement. Date:
Do you have a valid Oil & Gas Lease? Yes No
Depth and Type: Junk in Hole at Tools in Hole at Casing Leaks: Yes No Depth of casing leak(s):
Type Completion: ALT. I ALT. II Depth of: DV Tool: w / sacks of cement Port Collar: w / sack of cement
Packer Type: Size: Inch Set at: Feet
Total Depth: Plug Back Depth: Plug Back Method:

Geological Date:

Table with 4 columns: Formation Name, Formation Top, Formation Base, Completion Information. Rows 1 and 2.

UNDER PENALTY OF PERJURY I HEREBY ATTEST THAT THE INFORMATION CONTAINED HEREIN IS TRUE AND CORRECT TO THE BEST OF MY KNOWLEDGE

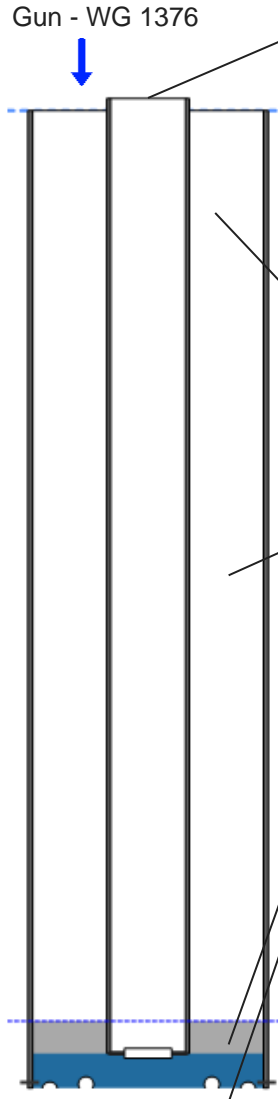
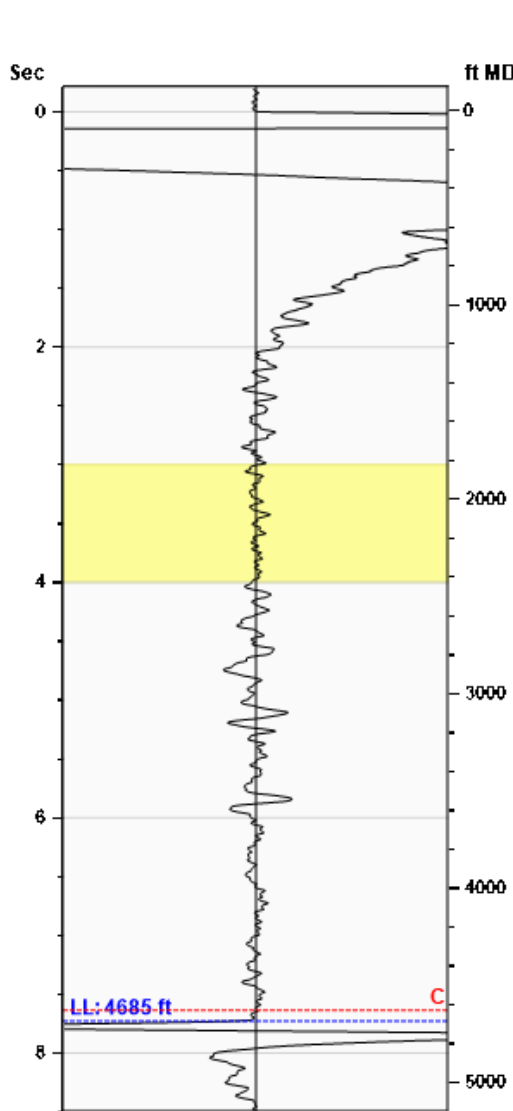
Submitted Electronically

Do NOT Write in This Space - KCC USE ONLY
Date Tested: Results: Date Plugged: Date Repaired: Date Put Back in Service:
Review Completed by: Comments:
TA Approved: Yes Denied Date:

Mail to the Appropriate KCC Conservation Office:

Table with 3 columns: District Office, Address, Phone. Rows for District Office #1, #2, #3, #4.

Liquid Level 4685 ft MD **Fluid Above Tubing 166 ft TVD**
Gas Free Above Tubing 100 ft TVD



Production

Date Entered 10/13/22

	Current	Potential	
Oil	0	**	BBL/D
Water	0	**	BBL/D
Gas	0.0	**	Mscf/D

IPR Method Vogel
 PBHP/SBHP 1.12
 Producing Efficiency 0.00%

Casing Pressure

Pressure 457.7 psi (g)

Annular Gas Flow

Gas Flow 21.1 Mscf/D

Fluid Properties

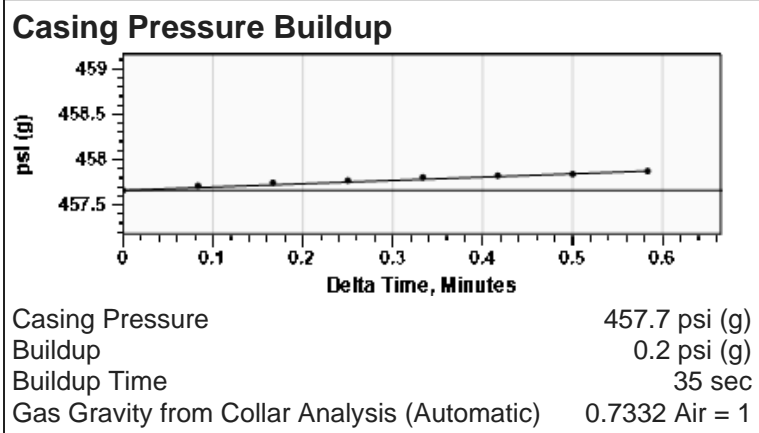
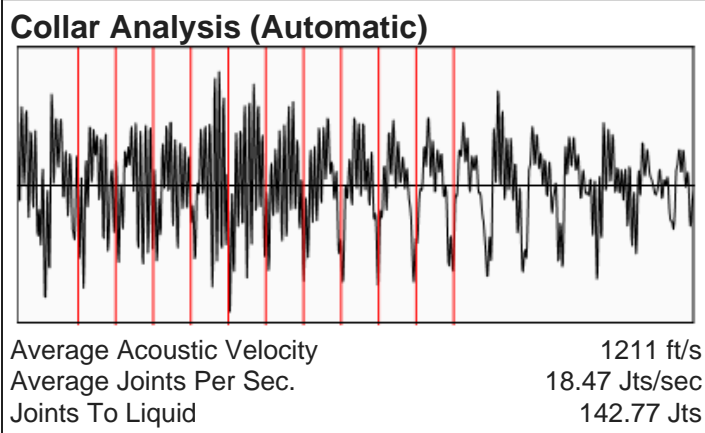
% Liquid Above Tubing	59.99%
% Liquid Below Tubing	73.48%

Depths

Tubing Depth	4851 ft
Formation Depth	5000 ft

Wellbore Pressures

TIP	553.1 psi (g)
PBHP	602.8 psi (g)
SBHP	538.2 psi (g)
Gas/Liq Interface	520.6 psi (g)



Comments and Recommendations

Echometer Company
 5001 Ditto Lane
 Wichita Falls, TX 76302
 (940) 767-4334
 info@echometer.com

Conservation Division
District Office No. 1
210 E. Frontview, Suite A
Dodge City, KS 67801



Phone: 620-682-7933
<http://kcc.ks.gov/>

Andrew J. French, Chairperson
Dwight D. Keen, Commissioner
Annie Kuether, Commissioner

Laura Kelly, Governor

04/02/2026

Jay Schweikert
Grand Mesa Operating Company
1700 N. WATERFRONT PKWY, B600
WICHITA, KS 67206-5514

Re: Temporary Abandonment
API 15-033-10014-00-00
HUCK JOBE GAS UNIT 1
NW/4 Sec.33-33S-17W
Comanche County, Kansas

Dear Jay Schweikert:

"Your temporary abandonment (TA) application for the well listed above has been approved. In accordance with K.A.R. 82-3-111 the TA status of this well will expire 04/02/2027.

- * If you return this well to service or plug it, please notify the District Office.
- * If you sell this well you are required to file a Transfer of Operator form, T-1.
- * If the well will remain temporarily abandoned, you must submit a new TA application, CP-111, before 04/02/2027.

You may contact me at the number above if you have questions.

Very truly yours,

Michael Maier"