

KANSAS CORPORATION COMMISSION
OIL & GAS CONSERVATION DIVISION

TEMPORARY ABANDONMENT WELL APPLICATION

OPERATOR: License#
Name:
Address 1:
Address 2:
City: State: Zip:
Contact Person:
Phone:
Contact Person Email:
Field Contact Person:
Field Contact Person Phone:

API No. 15-
Spot Description:
Sec. Twp. S. R.
feet from N / S Line of Section
feet from E / W Line of Section
GPS Location: Lat: , Long:
Datum: NAD27 NAD83 WGS84
County: Elevation: GL KB
Lease Name: Well #:
Well Type: (check one) Oil Gas OG WSW Other:
SWD Permit #: ENHR Permit #:
Gas Storage Permit #:
Spud Date: Date Shut-In:

Table with 7 columns: Conductor, Surface, Production, Intermediate, Liner, Tubing. Rows include Size, Setting Depth, Amount of Cement, Top of Cement, Bottom of Cement.

Casing Fluid Level from Surface: How Determined? Date:
Casing Squeeze(s): to w / sacks of cement, to w / sacks of cement. Date:
Do you have a valid Oil & Gas Lease? Yes No
Depth and Type: Junk in Hole at Tools in Hole at Casing Leaks: Yes No Depth of casing leak(s):
Type Completion: ALT. I ALT. II Depth of: DV Tool: w / sacks of cement Port Collar: w / sack of cement
Packer Type: Size: Inch Set at: Feet
Total Depth: Plug Back Depth: Plug Back Method:

Geological Date:

Table with 4 columns: Formation Name, Formation Top, Formation Base, Completion Information. Rows 1 and 2.

UNDER PENALTY OF PERJURY I HEREBY ATTEST THAT THE INFORMATION CONTAINED HEREIN IS TRUE AND CORRECT TO THE BEST OF MY KNOWLEDGE

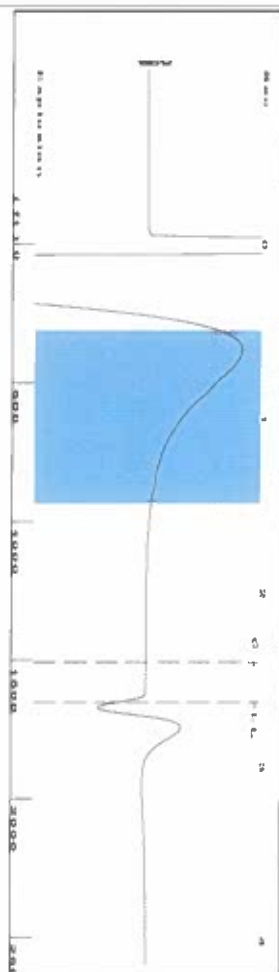
Submitted Electronically

Do NOT Write in This Space - KCC USE ONLY
Date Tested: Results: Date Plugged: Date Repaired: Date Put Back in Service:
Review Completed by: Comments:
TA Approved: Yes Denied Date:

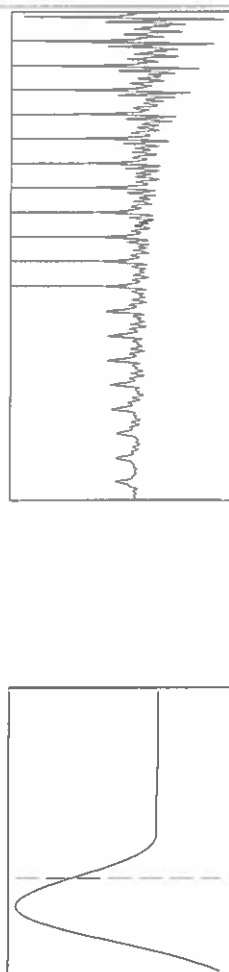
Mail to the Appropriate KCC Conservation Office:

Table with 3 columns: District Office #, Address, Phone. Rows 1-4.

Group: SUBLETTE Well: Mosbarger B-1 (acquired on: 03/26/26 10:06:35)



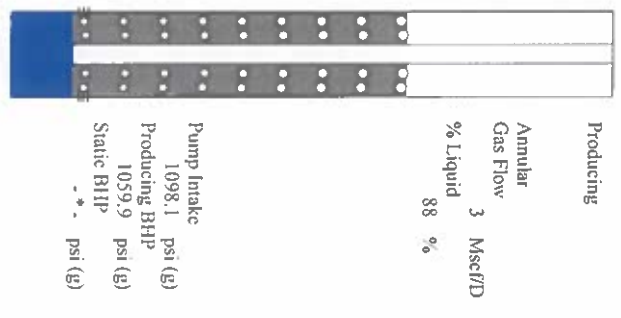
Filter Type High Pass Automatic Collar Count Yes
 Manual Acoustic Velo 260.44 ft/s Manual JTS/sec 19.8807
 Time 2.632 sec
 Joints 52.1434 Jts
 Depth 1652.95 ft



Analysis Method: Automatic

Group: SUBLETTE Well: Mosbarger B-1 (acquired on: 03/26/26 10:06:35)

| | | | |
|--------------------------------------|--------------|-------------------------------|-----------|
| Production | Potential | Casing Pressure | Producing |
| Oil -*- BBL/D | -*- BBL/D | 1.0 psi (g) | Annular |
| Water -*- BBL/D | -*- BBL/D | Casing Pressure Buildup | Gas Flow |
| Gas -*- Mscf/D | -*- Mscf/D | 0.1 psi | % Liquid |
| IPR Method | Vogel | 1.00 min | 3 Mscf/D |
| PBHP/SBHP | -*- | Gas/Liquid Interface Pressure | |
| Production Efficiency | 0.0 | 1.7 psi (g) | |
| Oil 40 deg API | | Liquid Level Depth | |
| Water 1.05 Sp.Gr.H2O | | 1652.95 ft | |
| Gas 0.73 Sp.Gr.AIR | | Pump Intake Depth | |
| Acoustic Velocity | 1256.04 ft/s | 5439.00 ft | |
| | | Formation Depth | |
| | | 5315.00 ft | |
| Formation Submergence | | | |
| Total Gaseous Liquid Column HT (TVD) | | | |
| Equivalent Gas Free Liquid HT (TVD) | | | |
| | | | |
| 3/26/26 | | | |

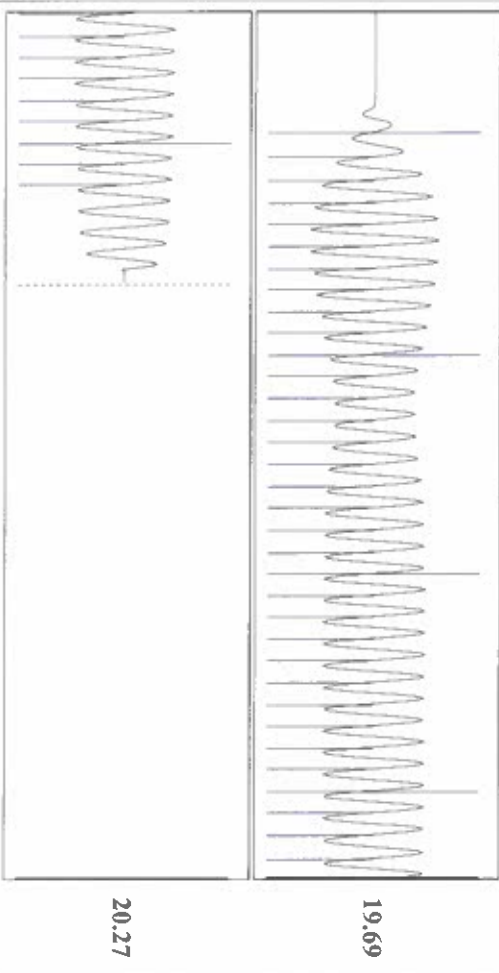


Group: SUBLETTE Well: Mosbarger B-1 (acquired on: 03/26/26 10:06:35)
 Casing Pressure Buildup



Change in Pressure 0.15 psi PT14679
 Change in Time 1.00 min Range 0 - ? psi

Group: SUBLETTE Well: Mosbarger B-1 (acquired on: 03/26/26 10:06:35)



| | | | |
|------------------------|-----------------|------------------------|---------|
| Acoustic Velocity | 1256.04 ft/s | Joints counted | 42 |
| Joints Per Second | 19.8113 jts/sec | Joints to liquid level | 52.1434 |
| Depth to liquid level | 1652.95 ft | Filter Width | 17.8807 |
| Automatic Collar Count | Yes | Time to 1st Collar | 0.28 |

04/02/2026

Idania Medina
Merit Energy Company, LLC
13727 Noel Road, Suite 1200
Dallas, TX 75240-7362

Re: Temporary Abandonment
API 15-081-22006-00-00
Mosbarger B 1
SE/4 Sec.09-28S-33W
Haskell County, Kansas

Dear Idania Medina:

"Your temporary abandonment (TA) application for the well listed above has been approved. In accordance with K.A.R. 82-3-111 the TA status of this well will expire 04/02/2027.

- * If you return this well to service or plug it, please notify the District Office.
- * If you sell this well you are required to file a Transfer of Operator form, T-1.
- * If the well will remain temporarily abandoned, you must submit a new TA application, CP-111, before 04/02/2027.

You may contact me at the number above if you have questions.

Very truly yours,

Michael Maier"