

KANSAS CORPORATION COMMISSION
OIL & GAS CONSERVATION DIVISION

Form must be Typed
Form must be signed

TEMPORARY ABANDONMENT WELL APPLICATION

All blanks must be complete

OPERATOR: License#
Name:
Address 1:
Address 2:
City: State: Zip:
Contact Person:
Phone:
Contact Person Email:
Field Contact Person:
Field Contact Person Phone:

API No. 15-
Spot Description:
Sec. Twp. S. R.
GPS Location: Lat, Long
Datum: NAD27, NAD83, WGS84
County: Elevation:
Lease Name: Well #:
Well Type: Oil, Gas, OG, WSW, Other
SWD Permit #: ENHR Permit #:
Gas Storage Permit #:
Spud Date: Date Shut-In:

Table with 7 columns: Conductor, Surface, Production, Intermediate, Liner, Tubing. Rows include Size, Setting Depth, Amount of Cement, Top of Cement, Bottom of Cement.

Casing Fluid Level from Surface: How Determined? Date:
Casing Squeeze(s): to w / sacks of cement, to w / sacks of cement. Date:
Do you have a valid Oil & Gas Lease? Yes No
Depth and Type: Junk in Hole at Tools in Hole at Casing Leaks: Yes No Depth of casing leak(s):
Type Completion: ALT. I ALT. II Depth of: DV Tool: w / sacks of cement Port Collar: w / sack of cement
Packer Type: Size: Inch Set at: Feet
Total Depth: Plug Back Depth: Plug Back Method:

Geological Data:

Table with 4 columns: Formation Name, Formation Top, Formation Base, Completion Information. Rows 1 and 2.

UNDER PENALTY OF PERJURY I HEREBY ATTEST THAT THE INFORMATION CONTAINED HEREIN IS TRUE AND CORRECT TO THE BEST OF MY KNOWLEDGE

Submitted Electronically

Do NOT Write in This Space - KCC USE ONLY
Date Tested: Results: Date Plugged: Date Repaired: Date Put Back in Service:
Review Completed by: Comments:
TA Approved: Yes Denied Date:

Mail to the Appropriate KCC Conservation Office:

Table with 3 columns: District Office #, Address, Phone. Rows 1-4.

Liquid Level

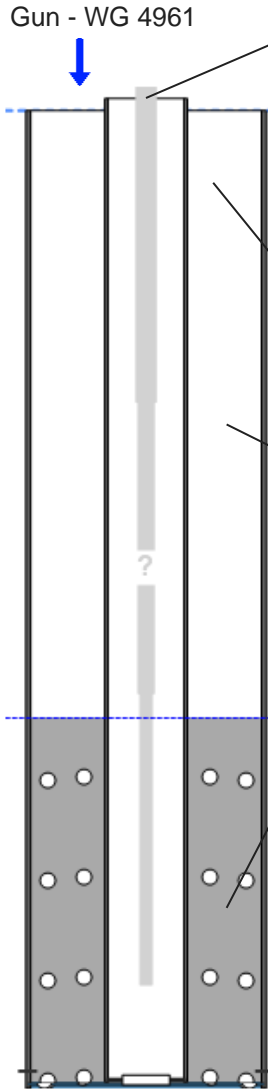
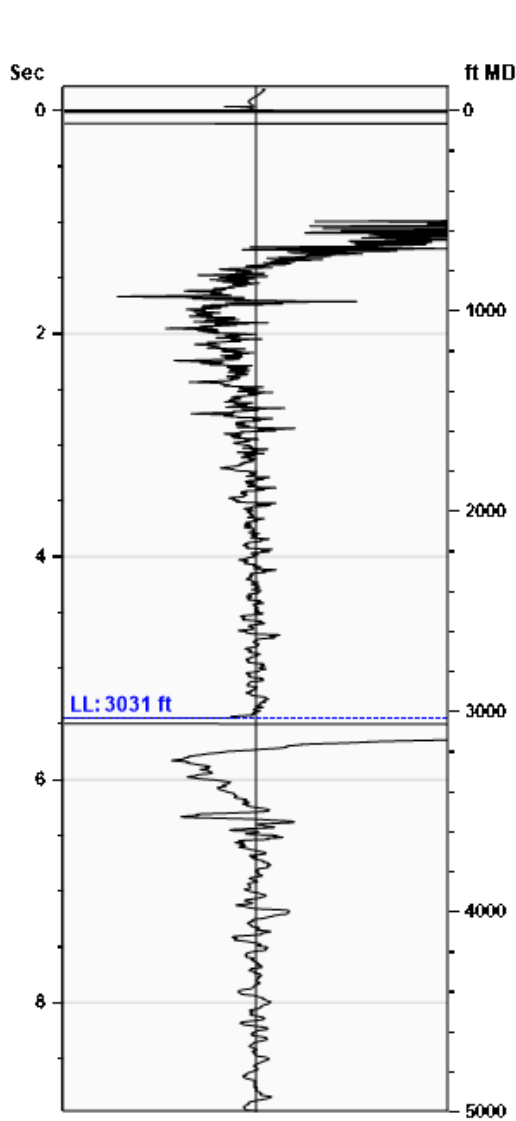
3031 ft MD

Fluid Above Pump

1809 ft TVD

Equivalent Gas Free Above Pump

1708 ft TVD



Production

Date Entered	03/31/26		
Oil	Current **	Potential **	BBL/D
Water	**	**	BBL/D
Gas	**	**	Mscf/D
IPR Method	Vogel		
PBHP/SBHP	-0.00		
Producing Efficiency	0.00%		

Casing Pressure

Pressure	23.3 psi (g)
----------	--------------

Annular Gas Flow

Gas Flow	1.4 Mscf/D
----------	------------

Fluid Properties

% Liquid Above Pump	94.44%
% Liquid Below Pump	**

Depths

Pump Intake Depth	4840 ft
Formation Depth	4839 ft

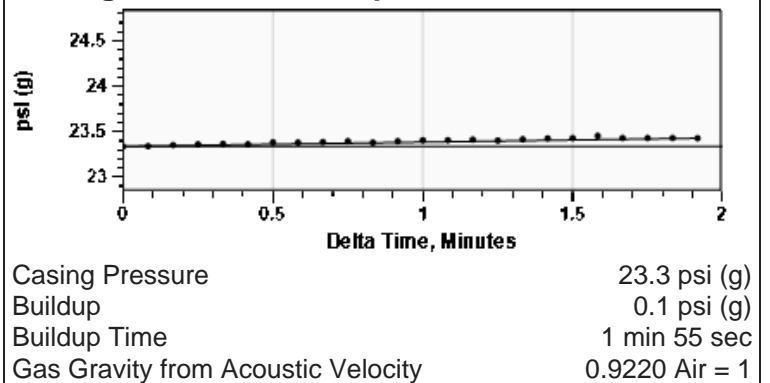
Wellbore Pressures

PIP	598.3 psi (g)
PBHP	598.0 psi (g)
SBHP	**
Gas/Liq Interface	27.2 psi (g)

Acoustic Velocity

Surface Temp	70 deg F	0.00% CO2
Bottomhole Temp	150 deg F	0.00% N2
Pressure	23.3 psi (g)	0.00% H2S
Gas Gravity	0.9220 Air = 1	
Acoustic Velocity	1113 ft/s	
Joints Per Sec.	**	
Joints To Liquid	**	
Calculated From Known Gas Specific Gravity		

Casing Pressure Buildup



Comments and Recommendations

Conservation Division
District Office No. 1
210 E. Frontview, Suite A
Dodge City, KS 67801



Phone: 620-682-7933
<http://kcc.ks.gov/>

Andrew J. French, Chairperson
Dwight D. Keen, Commissioner
Annie Kuether, Commissioner

Laura Kelly, Governor

04/02/2026

TJ Dixon
Dixon Operating Company, LLC
1625 N WATERFRONT PKWY STE 220
WICHITA, KS 67206-6620

Re: Temporary Abandonment
API 15-007-01692-00-01
RM STERLING 3
NE/4 Sec.35-34S-13W
Barber County, Kansas

Dear TJ Dixon:

"Your temporary abandonment (TA) application for the well listed above has been approved. In accordance with K.A.R. 82-3-111 the TA status of this well will expire 04/02/2027.

- * If you return this well to service or plug it, please notify the District Office.
- * If you sell this well you are required to file a Transfer of Operator form, T-1.
- * If the well will remain temporarily abandoned, you must submit a new TA application, CP-111, before 04/02/2027.

You may contact me at the number above if you have questions.

Very truly yours,

Michael Maier"