

KANSAS CORPORATION COMMISSION
OIL & GAS CONSERVATION DIVISION

TEMPORARY ABANDONMENT WELL APPLICATION

OPERATOR: License#
Name:
Address 1:
Address 2:
City: State: Zip:
Contact Person:
Phone:
Contact Person Email:
Field Contact Person:
Field Contact Person Phone:

API No. 15-
Spot Description:
Sec. Twp. S. R.
feet from N / S Line of Section
feet from E / W Line of Section
GPS Location: Lat: , Long:
Datum: NAD27 NAD83 WGS84
County: Elevation: GL KB
Lease Name: Well #:
Well Type: (check one) Oil Gas OG WSW Other:
SWD Permit #: ENHR Permit #:
Gas Storage Permit #:
Spud Date: Date Shut-In:

Table with 7 columns: Conductor, Surface, Production, Intermediate, Liner, Tubing. Rows include Size, Setting Depth, Amount of Cement, Top of Cement, Bottom of Cement.

Casing Fluid Level from Surface: How Determined? Date:
Casing Squeeze(s): to w / sacks of cement, to w / sacks of cement. Date:
Do you have a valid Oil & Gas Lease? Yes No
Depth and Type: Junk in Hole at Tools in Hole at Casing Leaks: Yes No Depth of casing leak(s):
Type Completion: ALT. I ALT. II Depth of: DV Tool: w / sacks of cement Port Collar: w / sack of cement
Packer Type: Size: Inch Set at: Feet
Total Depth: Plug Back Depth: Plug Back Method:

Geological Date:

Table with 4 columns: Formation Name, Formation Top, Formation Base, Completion Information. Rows 1 and 2.

UNDER PENALTY OF PERJURY I HEREBY ATTEST THAT THE INFORMATION CONTAINED HEREIN IS TRUE AND CORRECT TO THE BEST OF MY KNOWLEDGE

Submitted Electronically

Do NOT Write in This Space - KCC USE ONLY
Date Tested: Results: Date Plugged: Date Repaired: Date Put Back in Service:
Review Completed by: Comments:
TA Approved: Yes Denied Date:

Mail to the Appropriate KCC Conservation Office:

Table with 3 columns: District Office #, Address, Phone. Rows 1-4.

**Liquid Level**

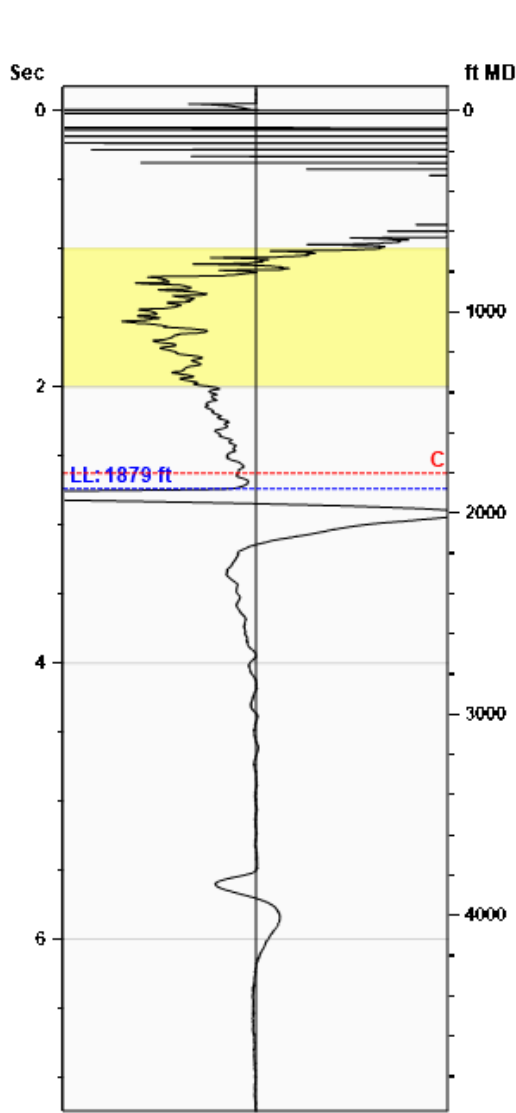
**1879 ft MD**

Fluid Above Pump

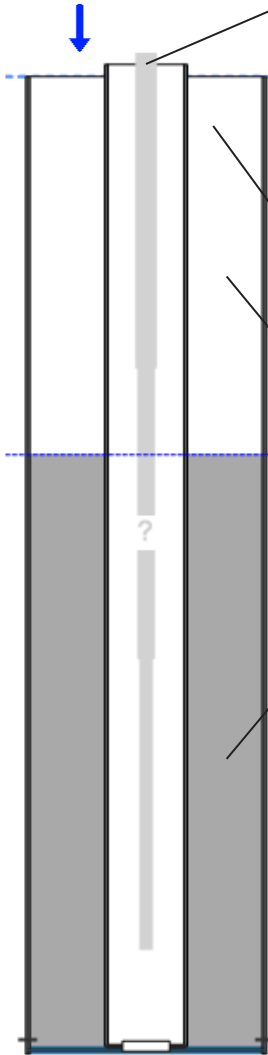
2941 ft TVD

Equivalent Gas Free Above Pump

2941 ft TVD



Gun - WG 4961



**Production**

|                      |          |           |        |
|----------------------|----------|-----------|--------|
| Date Entered         | 03/31/26 |           |        |
|                      | Current  | Potential |        |
| Oil                  | **       | **        | BBL/D  |
| Water                | **       | **        | BBL/D  |
| Gas                  | **       | **        | Mscf/D |
| IPR Method           | Vogel    |           |        |
| PBHP/SBHP            | -0.00    |           |        |
| Producing Efficiency | 0.00%    |           |        |

**Casing Pressure**

|          |             |
|----------|-------------|
| Pressure | 0.3 psi (g) |
|----------|-------------|

**Annular Gas Flow**

|          |            |
|----------|------------|
| Gas Flow | 0.1 Mscf/D |
|----------|------------|

**Fluid Properties**

|                     |         |
|---------------------|---------|
| % Liquid Above Pump | 100.00% |
| % Liquid Below Pump | **      |

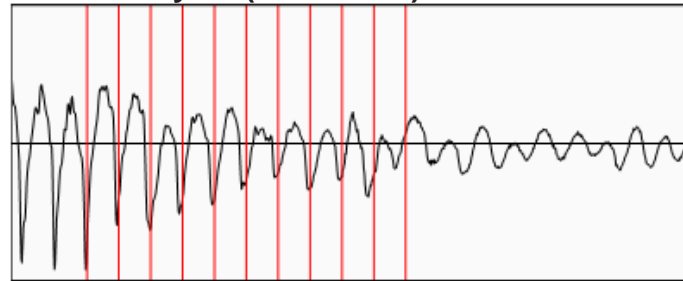
**Depths**

|                   |         |
|-------------------|---------|
| Pump Intake Depth | 4820 ft |
| Formation Depth   | 4800 ft |

**Wellbore Pressures**

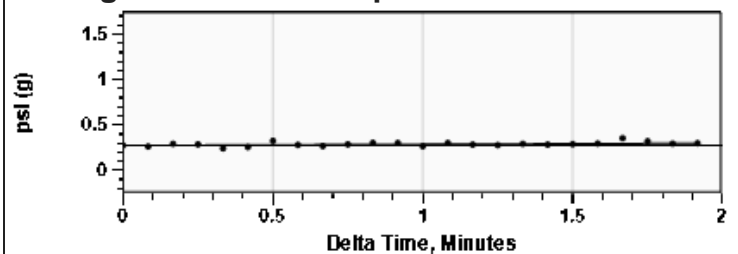
|                   |               |
|-------------------|---------------|
| PIP               | 970.6 psi (g) |
| PBHP              | 964.3 psi (g) |
| SBHP              | **            |
| Gas/Liq Interface | 0.9 psi (g)   |

**Collar Analysis (Automatic)**



|                           |               |
|---------------------------|---------------|
| Average Acoustic Velocity | 1373 ft/s     |
| Average Joints Per Sec.   | 21.66 Jts/sec |
| Joints To Liquid          | 59.28 Jts     |

**Casing Pressure Buildup**



|  |                |
|--|----------------|
| Casing Pressure                              | 0.3 psi (g)    |
| Buildup                                      | 0.0 psi (g)    |
| Buildup Time                                 | 1 min 55 sec   |
| Gas Gravity from Collar Analysis (Automatic) | 0.6273 Air = 1 |

**Comments and Recommendations**

Conservation Division  
District Office No. 1  
210 E. Frontview, Suite A  
Dodge City, KS 67801



Phone: 620-682-7933  
<http://kcc.ks.gov/>

Andrew J. French, Chairperson  
Dwight D. Keen, Commissioner  
Annie Kuether, Commissioner

Laura Kelly, Governor

04/02/2026

TJ Dixon  
Dixon Operating Company, LLC  
1625 N WATERFRONT PKWY STE 220  
WICHITA, KS 67206-6620

Re: Temporary Abandonment  
API 15-007-22524-00-00  
CR WETZ 1  
NW/4 Sec.01-35S-12W  
Barber County, Kansas

Dear TJ Dixon:

"Your temporary abandonment (TA) application for the well listed above has been approved. In accordance with K.A.R. 82-3-111 the TA status of this well will expire 04/02/2027.

- \* If you return this well to service or plug it, please notify the District Office.
- \* If you sell this well you are required to file a Transfer of Operator form, T-1.
- \* If the well will remain temporarily abandoned, you must submit a new TA application, CP-111, before 04/02/2027.

You may contact me at the number above if you have questions.

Very truly yours,

Michael Maier"