

KANSAS CORPORATION COMMISSION
OIL & GAS CONSERVATION DIVISION

Form must be Typed
Form must be signed

TEMPORARY ABANDONMENT WELL APPLICATION

All blanks must be complete

OPERATOR: License#
Name:
Address 1:
Address 2:
City: State: Zip:
Contact Person:
Phone:
Contact Person Email:
Field Contact Person:
Field Contact Person Phone:

API No. 15-
Spot Description:
Sec. Twp. S. R.
feet from N / S Line of Section
feet from E / W Line of Section
GPS Location: Lat: , Long:
Datum: NAD27 NAD83 WGS84
County: Elevation: GL KB
Lease Name: Well #:
Well Type: (check one) Oil Gas OG WSW Other:
SWD Permit #: ENHR Permit #:
Gas Storage Permit #:
Spud Date: Date Shut-In:

Table with 7 columns: Conductor, Surface, Production, Intermediate, Liner, Tubing. Rows include Size, Setting Depth, Amount of Cement, Top of Cement, Bottom of Cement.

Casing Fluid Level from Surface: How Determined? Date:
Casing Squeeze(s): to w / sacks of cement, to w / sacks of cement. Date:
Do you have a valid Oil & Gas Lease? Yes No
Depth and Type: Junk in Hole at Tools in Hole at Casing Leaks: Yes No Depth of casing leak(s):
Type Completion: ALT. I ALT. II Depth of: DV Tool: w / sacks of cement Port Collar: w / sack of cement
Packer Type: Size: Inch Set at: Feet
Total Depth: Plug Back Depth: Plug Back Method:

Geological Data:

Table with 4 columns: Formation Name, Formation Top, Formation Base, Completion Information. Rows 1 and 2.

UNDER PENALTY OF PERJURY I HEREBY ATTEST THAT THE INFORMATION CONTAINED HEREIN IS TRUE AND CORRECT TO THE BEST OF MY KNOWLEDGE

Submitted Electronically

Do NOT Write in This Space - KCC USE ONLY
Date Tested: Results: Date Plugged: Date Repaired: Date Put Back in Service:
Review Completed by: Comments:
TA Approved: Yes Denied Date:

Mail to the Appropriate KCC Conservation Office:

Table with 3 columns: District Office, Address, Phone. Rows for District Office #1, #2, #3, #4.

**Liquid Level**

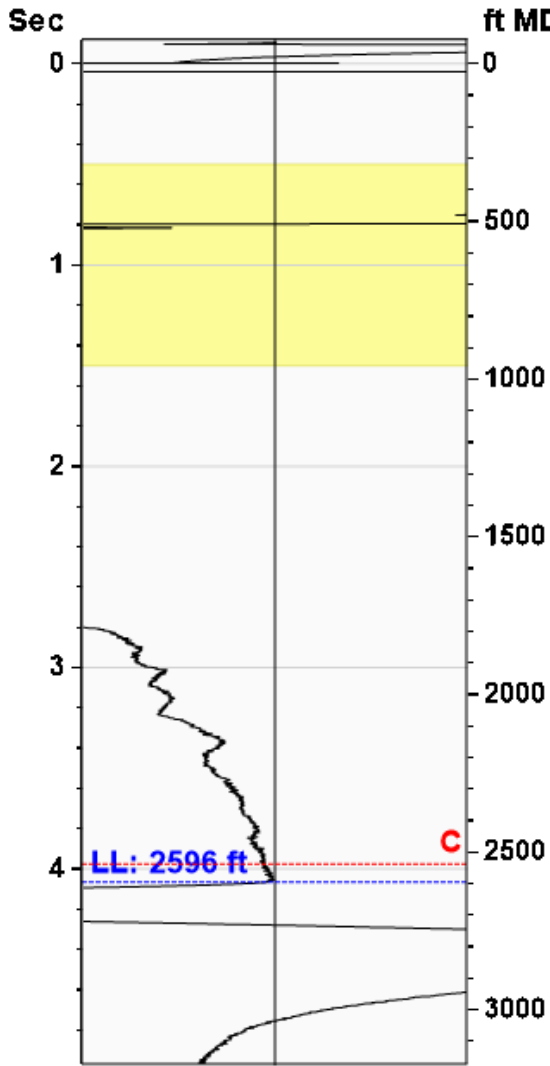
**2596 ft MD**

Fluid Above Pump

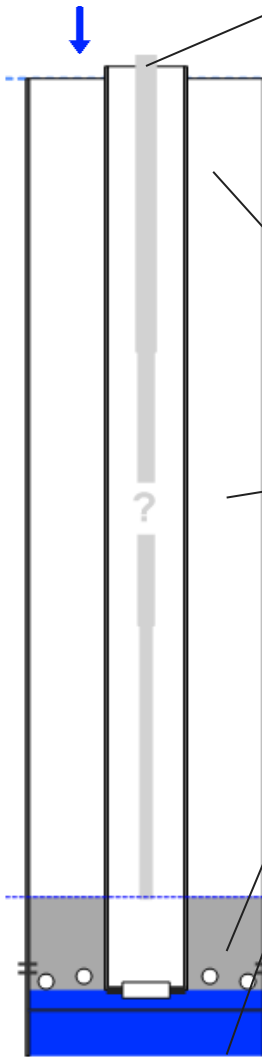
295 ft TVD

Equivalent Gas Free Above Pump

252 ft TVD



Gun - WRFG 1274



**Production**

Date Entered	04/07/26		
	Current	Potential	
Oil	**	**	BBL/D
Water	**	**	BBL/D
Gas	**	**	Mscf/D
IPR Method	Vogel		
PBHP/SBHP	0.72		
Producing Efficiency	38.70%		

**Casing Pressure**

Pressure	-13.4 psi (g)
----------	---------------

**Annular Gas Flow**

Gas Flow	2.1 Mscf/D
----------	------------

**Fluid Properties**

% Liquid Above Pump	85.39%
% Liquid Below Pump	90.32%

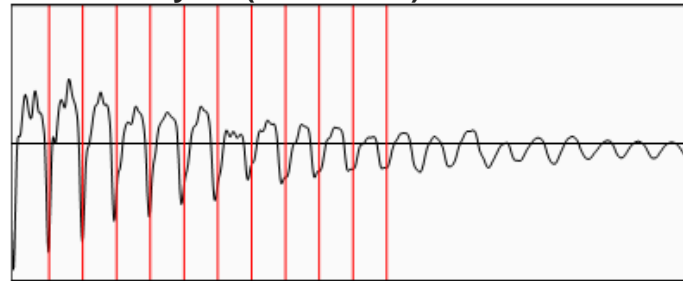
**Depths**

Pump Intake Depth	2891 ft
Formation Depth	2891 ft

**Wellbore Pressures**

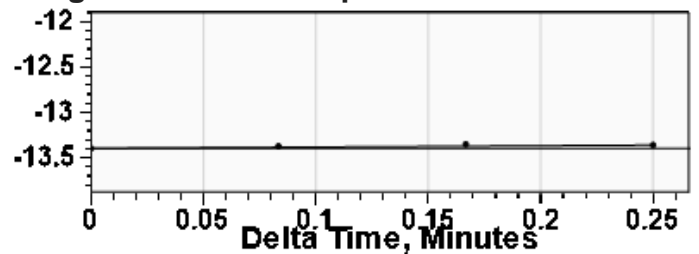
PIP	72.2 psi (g)
PBHP	72.4 psi (g)
SBHP	100.0 psi (g)
Gas/Liq Interface	-13.3 psi (g)

**Collar Analysis (Automatic)**



Average Acoustic Velocity	1277 ft/s
Average Joints Per Sec.	20.14 Jts/sec
Joints To Liquid	81.88 Jts

**Casing Pressure Buildup**



Casing Pressure	-13.4 psi (g)
Buildup	0.0 psi (g)
Buildup Time	15 sec
Gas Gravity from Collar Analysis (Automatic)	0.7305 Air = 1

**Comments and Recommendations**

shot at 200 psi

Conservation Division  
District Office No. 1  
210 E. Frontview, Suite A  
Dodge City, KS 67801



Phone: 620-682-7933  
<http://kcc.ks.gov/>

Andrew J. French, Chairperson  
Dwight D. Keen, Commissioner  
Annie Kuether, Commissioner

Laura Kelly, Governor

04/09/2026

JESSICA MCLAIN  
BCE-Mach LLC  
14201 WIRELESS WAY, SUITE 300  
OKLAHOMA CITY, OK 73134-2521

Re: Temporary Abandonment  
API 15-055-20369-00-00  
DEVLIN 2  
SW/4 Sec.19-26S-34W  
Finney County, Kansas

Dear JESSICA MCLAIN:

"Your temporary abandonment (TA) application for the well listed above has been approved. In accordance with K.A.R. 82-3-111 the TA status of this well will expire 04/09/2027.

- \* If you return this well to service or plug it, please notify the District Office.
- \* If you sell this well you are required to file a Transfer of Operator form, T-1.
- \* If the well will remain temporarily abandoned, you must submit a new TA application, CP-111, before 04/09/2027.

You may contact me at the number above if you have questions.

Very truly yours,

Michael Maier"