

KANSAS CORPORATION COMMISSION
OIL & GAS CONSERVATION DIVISION

Form must be Typed
Form must be signed

TEMPORARY ABANDONMENT WELL APPLICATION

All blanks must be complete

OPERATOR: License#
Name:
Address 1:
Address 2:
City: State: Zip:
Contact Person:
Phone:
Contact Person Email:
Field Contact Person:
Field Contact Person Phone:

API No. 15-
Spot Description:
Sec. Twp. S. R.
feet from N / S Line of Section
feet from E / W Line of Section
GPS Location: Lat: , Long:
Datum: NAD27 NAD83 WGS84
County: Elevation: GL KB
Lease Name: Well #:
Well Type: Oil Gas OG WSW Other:
SWD Permit #: ENHR Permit #:
Gas Storage Permit #:
Spud Date: Date Shut-In:

Table with 7 columns: Conductor, Surface, Production, Intermediate, Liner, Tubing. Rows include Size, Setting Depth, Amount of Cement, Top of Cement, Bottom of Cement.

Casing Fluid Level from Surface: How Determined? Date:
Casing Squeeze(s): to w / sacks of cement, to w / sacks of cement. Date:
Do you have a valid Oil & Gas Lease? Yes No
Depth and Type: Junk in Hole at Tools in Hole at Casing Leaks: Yes No Depth of casing leak(s):
Type Completion: ALT. I ALT. II Depth of: DV Tool: w / sacks of cement Port Collar: w / sack of cement
Packer Type: Size: Inch Set at: Feet
Total Depth: Plug Back Depth: Plug Back Method:

Geological Data:

Table with 4 columns: Formation Name, Formation Top, Formation Base, Completion Information. Rows 1 and 2.

UNDER PENALTY OF PERJURY I HEREBY ATTEST THAT THE INFORMATION CONTAINED HEREIN IS TRUE AND CORRECT TO THE BEST OF MY KNOWLEDGE

Submitted Electronically

Do NOT Write in This Space - KCC USE ONLY
Date Tested: Results: Date Plugged: Date Repaired: Date Put Back in Service:
Review Completed by: Comments:
TA Approved: Yes Denied Date:

Mail to the Appropriate KCC Conservation Office:

Table with 3 columns: District Office #, Address, Phone. Rows 1-4.

Liquid Level

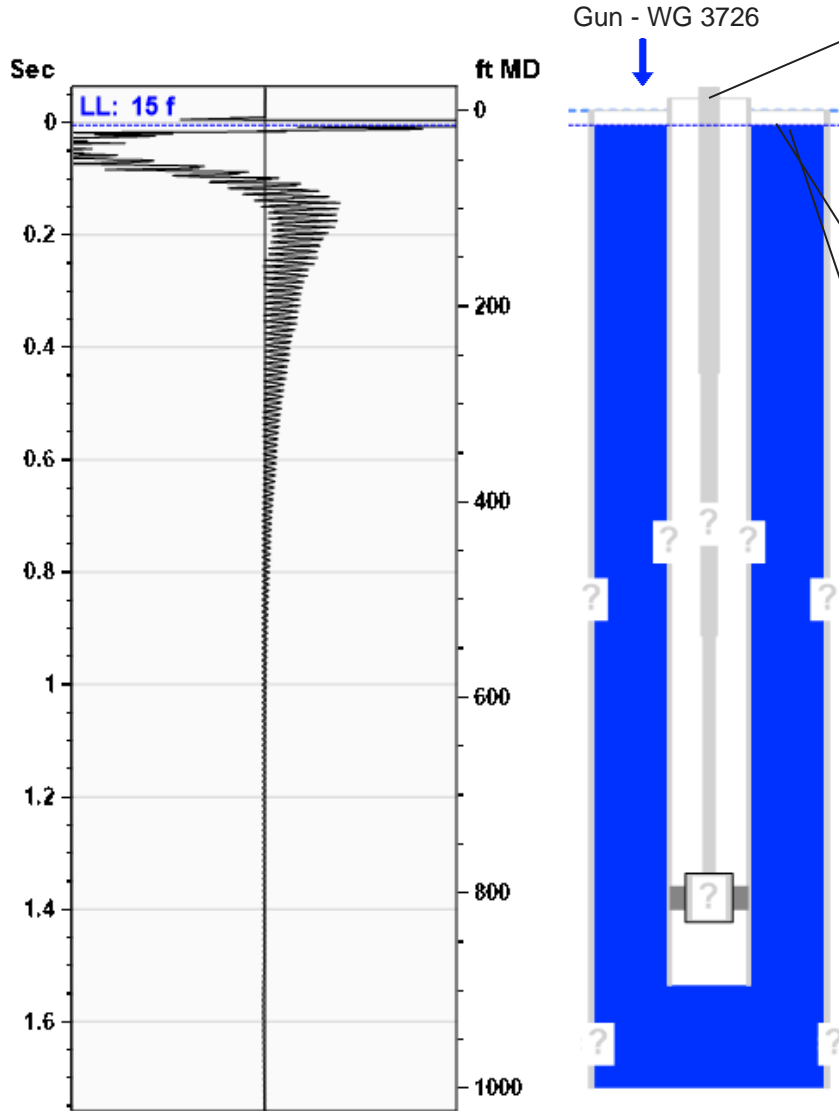
15 ft MD

Fluid Above Pump

.* ft TVD

Equivalent Gas Free Above Pump

.* ft TVD



Production

Date Entered	02/24/26		
Oil	Current	Potential	BBL/D
Water	.*	.*	BBL/D
Gas	.*	.*	Mscf/D
IPR Method	Vogel		
PBHP/SBHP	1.00		
Producing Efficiency	0.00%		

Casing Pressure

Pressure	0.0 psi (g)
----------	-------------

Annular Gas Flow

Gas Flow	.* Mscf/D
----------	-----------

Fluid Properties

% Liquid Above Pump	100.00%
% Liquid Below Pump	.*

Depths

Pump Intake Depth	0 ft
Formation Depth	0 ft

Wellbore Pressures

PIP	.*
PBHP	.*
SBHP	.*
Gas/Liq Interface	.*

Acoustic Velocity

Acoustic Velocity	1150 ft/s
Joints Per Sec.	18.14 Jts/sec
Joints To Liquid	0.47 Jts
Gas Gravity	0.8497 Air = 1

Entered From Known Acoustic Velocity

Casing Pressure Buildup

No Pressure Acquired

Casing Pressure	0.0 psi (g)
Buildup	0.0 psi (g)
Buildup Time	0 sec
Gas Gravity from Acoustic Velocity	0.8497 Air = 1

Comments and Recommendations

Acoustic Test

Petroleum Property Services
125 N. Market, #1251
Wichita, Ks 67202

04/10/2026

Rosann Schippers
Petroleum Property Services, Inc.
100 S Main Street, Suite 420
WICHITA, KS 67202-3737

Re: Temporary Abandonment
API 15-131-20248-00-00
RICHARDS-FUND A 4
SE/4 Sec.07-04S-14E
Nemaha County, Kansas

Dear Rosann Schippers:

"Your temporary abandonment (TA) application for the well listed above has been approved. In accordance with K.A.R. 82-3-111 the TA status of this well will expire 04/10/2027.

- * If you return this well to service or plug it, please notify the District Office.
- * If you sell this well you are required to file a Transfer of Operator form, T-1.
- * If the well will remain temporarily abandoned, you must submit a new TA application, CP-111, before 04/10/2027.

You may contact me at the number above if you have questions.

Very truly yours,

Ryan Tromsness ECRS"