

KANSAS CORPORATION COMMISSION
OIL & GAS CONSERVATION DIVISION

TEMPORARY ABANDONMENT WELL APPLICATION

OPERATOR: License#
Name:
Address 1:
Address 2:
City: State: Zip:
Contact Person:
Phone:
Contact Person Email:
Field Contact Person:
Field Contact Person Phone:

API No. 15-
Spot Description:
Sec. Twp. S. R.
GPS Location: Lat: Long:
Datum: NAD27 NAD83 WGS84
County: Elevation:
Lease Name: Well #:
Well Type: Oil Gas OG WSW Other:
SWD Permit #: ENHR Permit #:
Gas Storage Permit #:
Spud Date: Date Shut-In:

Table with 7 columns: Conductor, Surface, Production, Intermediate, Liner, Tubing. Rows include Size, Setting Depth, Amount of Cement, Top of Cement, Bottom of Cement.

Casing Fluid Level from Surface: How Determined? Date:
Casing Squeeze(s): to w / sacks of cement, to w / sacks of cement. Date:
Do you have a valid Oil & Gas Lease? Yes No
Depth and Type: Junk in Hole at Tools in Hole at Casing Leaks: Yes No Depth of casing leak(s):
Type Completion: ALT. I ALT. II Depth of: DV Tool: w / sacks of cement Port Collar: w / sack of cement
Packer Type: Size: Inch Set at: Feet
Total Depth: Plug Back Depth: Plug Back Method:

Geological Data:

Table with 4 columns: Formation Name, Formation Top, Formation Base, Completion Information. Rows 1 and 2.

UNDER PENALTY OF PERJURY I HEREBY ATTEST THAT THE INFORMATION CONTAINED HEREIN IS TRUE AND CORRECT TO THE BEST OF MY KNOWLEDGE

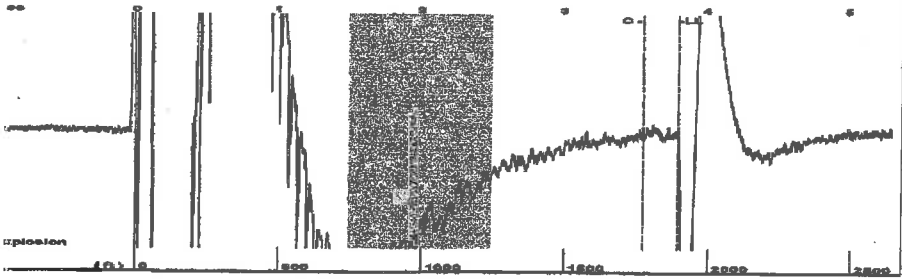
Submitted Electronically

Do NOT Write in This Space - KCC USE ONLY
Date Tested: Results: Date Plugged: Date Repaired: Date Put Back in Service:
Review Completed by: Comments:
TA Approved: Yes Denied Date:

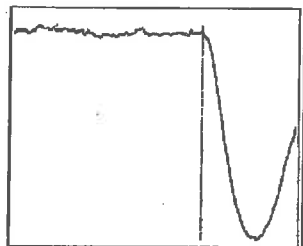
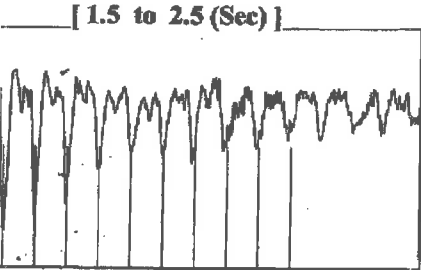
Mail to the Appropriate KCC Conservation Office:

Map of Kansas with 4 numbered districts. Table with 3 columns: District Office Name, Address, Phone Number.

Group: Radium Well: Langer 1-4 (acquired on: 04/08/26 08:43:27)

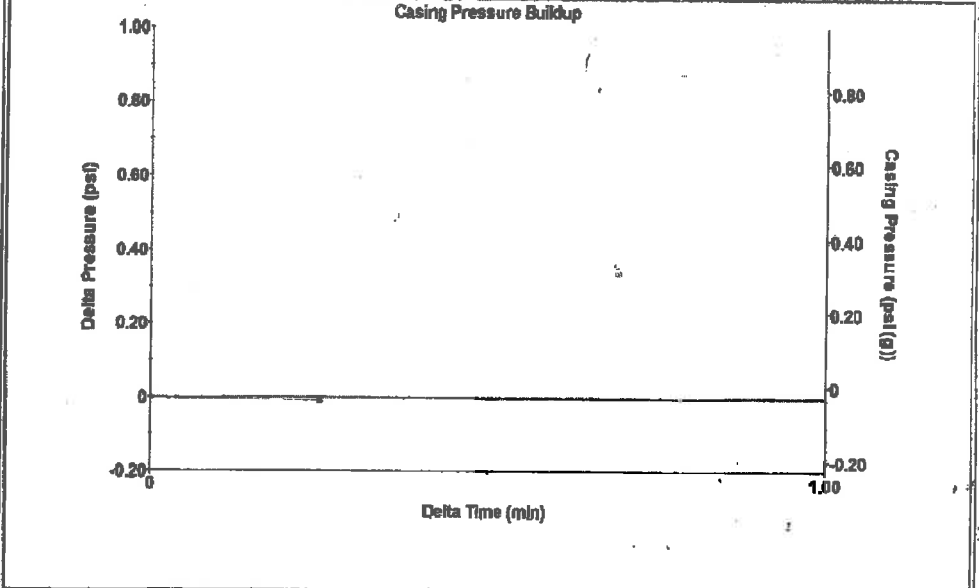


type High Pass Automatic Collar Count Yes Time 3.8 sec
 Acoustic Velocity 969.419 ft/s Manual JTS/sec 15.2905 Joints 59.7411 Jts
 Depth 1893.79 ft



Analysis Method: Automatic

Group: Radium Well: Langer 1-4 (acquired on: 04/08/26 08:43:27)

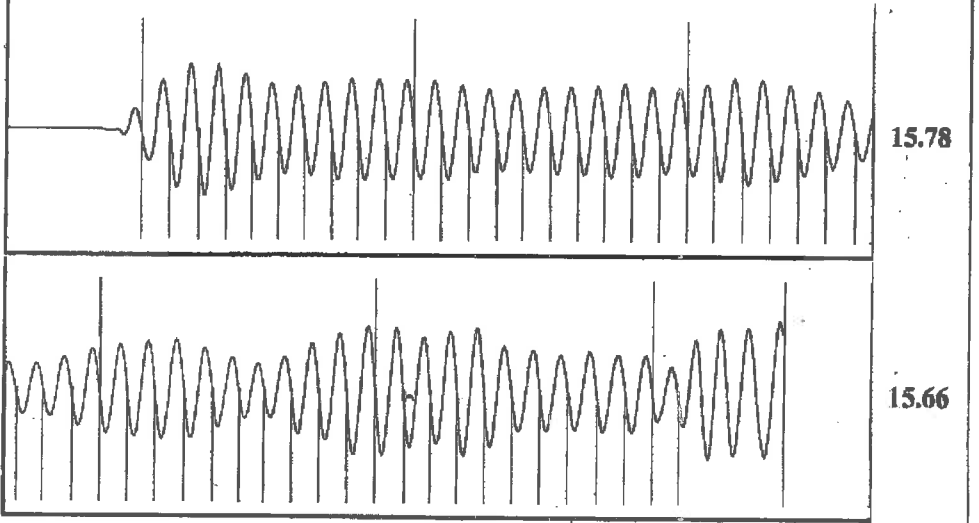


Change in Pressure -0.01 psi PT13440
 Change in Time -0.25 min Range 0 - ? psi

Group: Radium Well: Langer 1-4 (acquired on: 04/08/26 08:43:27)

<p>Current Potential</p> <p>40 deg API</p> <p>1.05 Sp.Gr.H2O</p> <p>0.98 Sp.Gr.AIR</p> <p>Acoustic Velocity 996.732 ft/s</p> <p>Production Submergence</p> <p>Gaseous Liquid Column HT (TVD) 1756 ft</p> <p>Element Gas Free Liquid HT (TVD) 1756 ft</p> <p>Static Test</p>	<p>Casing Pressure -0.0 psi (g)</p> <p>Casing Pressure Buildup -0.0 psi</p> <p>Gas/Liquid Interface Pressure 0.9 psi (g)</p> <p>Liquid Level Depth 1893.79 ft</p> <p>Pump Intake Depth 3650.00 ft</p> <p>Formation Depth 3460.00 ft</p> <p>Pump Intake 589.5 psi (g)</p> <p>Producing BHP 528.2 psi (g)</p> <p>Static BHP - * - psi (g)</p>	<p>Producing</p> <p>Annular Gas Flow 0 Mscf/D</p> <p>% Liquid 100 %</p>
---	---	---

Group: Radium Well: Langer 1-4 (acquired on: 04/08/26 08:43:27)



Acoustic Velocity	996.732 ft/s	Joints counted	51
Joints Per Second	15.7213 Jts/sec	Joints to liquid level	59.7411
Depth to liquid level	1893.79 ft	Filter Width	13.2905 17.2905
Automatic Collar Count	Yes	Time to 1st Collar	0.312 3.556

04/15/2026

Loveness Mpanje
F. G. Holl Company L.L.C.
9431 E CENTRAL STE 100
WICHITA, KS 67206-2563

Re: Temporary Abandonment
API 15-185-00598-00-00
LANGER 1
NE/4 Sec.04-21S-14W
Stafford County, Kansas

Dear Loveness Mpanje:

"Your temporary abandonment (TA) application for the well listed above has been approved. In accordance with K.A.R. 82-3-111 the TA status of this well will expire 04/15/2027.

- * If you return this well to service or plug it, please notify the District Office.
- * If you sell this well you are required to file a Transfer of Operator form, T-1.
- * If the well will remain temporarily abandoned, you must submit a new TA application, CP-111, before 04/15/2027.

You may contact me at the number above if you have questions.

Very truly yours,

Michael Maier"