

KANSAS CORPORATION COMMISSION
OIL & GAS CONSERVATION DIVISION

TEMPORARY ABANDONMENT WELL APPLICATION

OPERATOR: License#
Name:
Address 1:
Address 2:
City: State: Zip:
Contact Person:
Phone:
Contact Person Email:
Field Contact Person:
Field Contact Person Phone:

API No. 15-
Spot Description:
Sec. Twp. S. R.
GPS Location: Lat, Long
Datum: NAD27, NAD83, WGS84
County: Elevation:
Lease Name: Well #:
Well Type: Oil, Gas, OG, WSW, Other
Spud Date: Date Shut-In:

Table with 7 columns: Conductor, Surface, Production, Intermediate, Liner, Tubing. Rows include Size, Setting Depth, Amount of Cement, Top of Cement, Bottom of Cement.

Casing Fluid Level from Surface: How Determined? Date:
Casing Squeeze(s): to w / sacks of cement, to w / sacks of cement. Date:
Do you have a valid Oil & Gas Lease? Yes No
Depth and Type: Junk in Hole at Tools in Hole at Casing Leaks: Yes No Depth of casing leak(s):
Type Completion: ALT. I ALT. II Depth of: DV Tool: w / sacks of cement Port Collar: w / sack of cement
Packer Type: Size: Inch Set at: Feet
Total Depth: Plug Back Depth: Plug Back Method:

Geological Date:

Table with 4 columns: Formation Name, Formation Top, Formation Base, Completion Information. Rows 1 and 2.

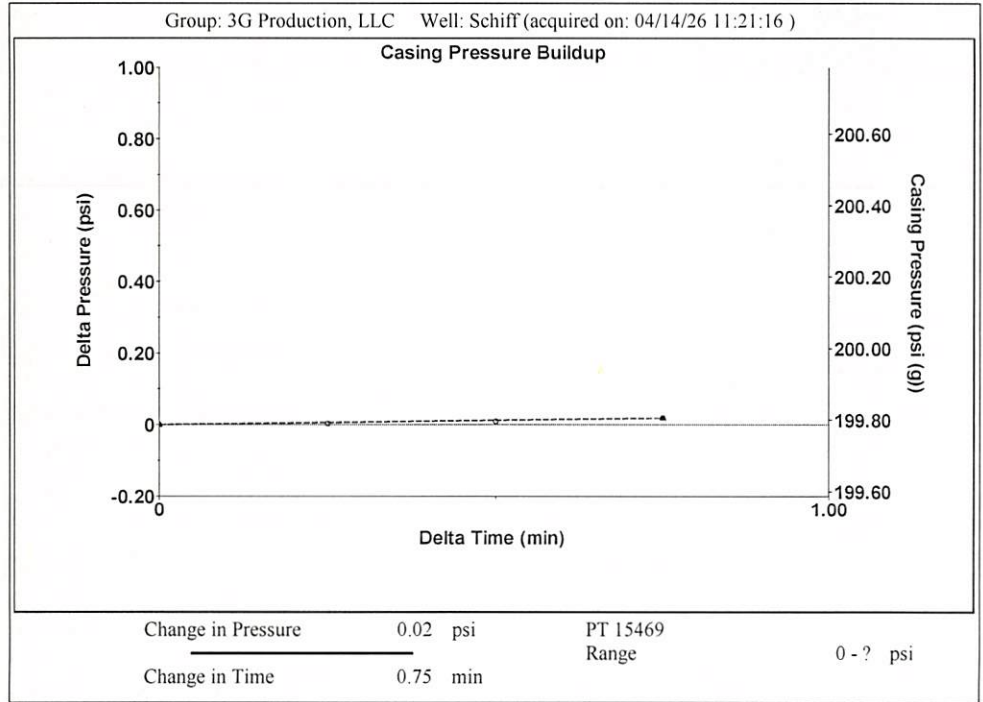
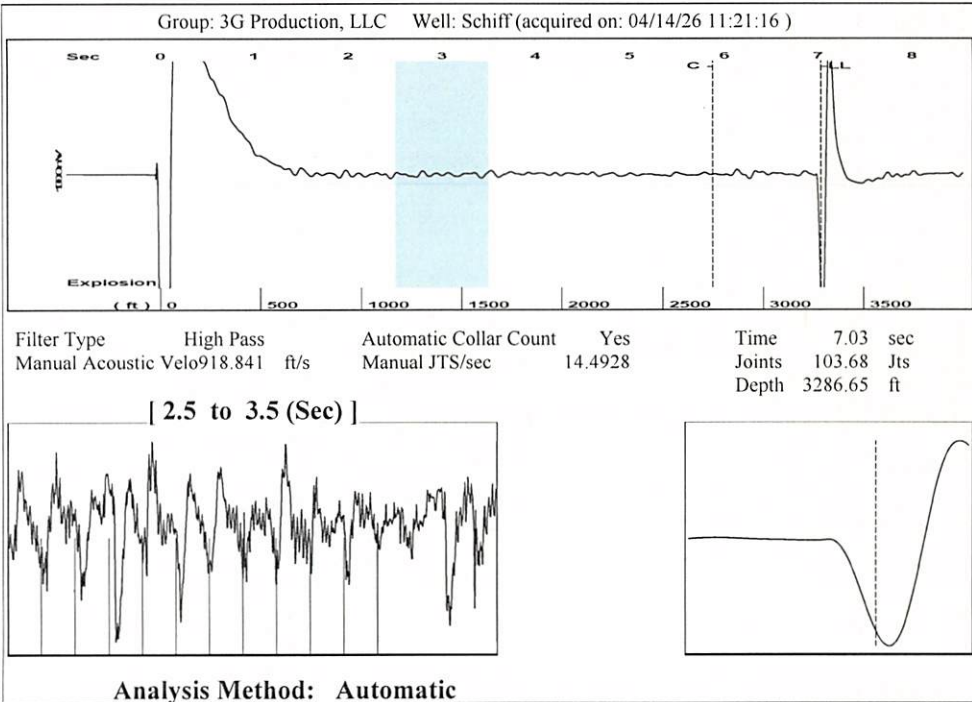
UNDER PENALTY OF PERJURY I HEREBY ATTEST THAT THE INFORMATION CONTAINED HEREIN IS TRUE AND CORRECT TO THE BEST OF MY KNOWLEDGE

Submitted Electronically

Do NOT Write in This Space - KCC USE ONLY
Date Tested: Results: Date Plugged: Date Repaired: Date Put Back in Service:
Review Completed by: Comments:
TA Approved: Yes Denied Date:

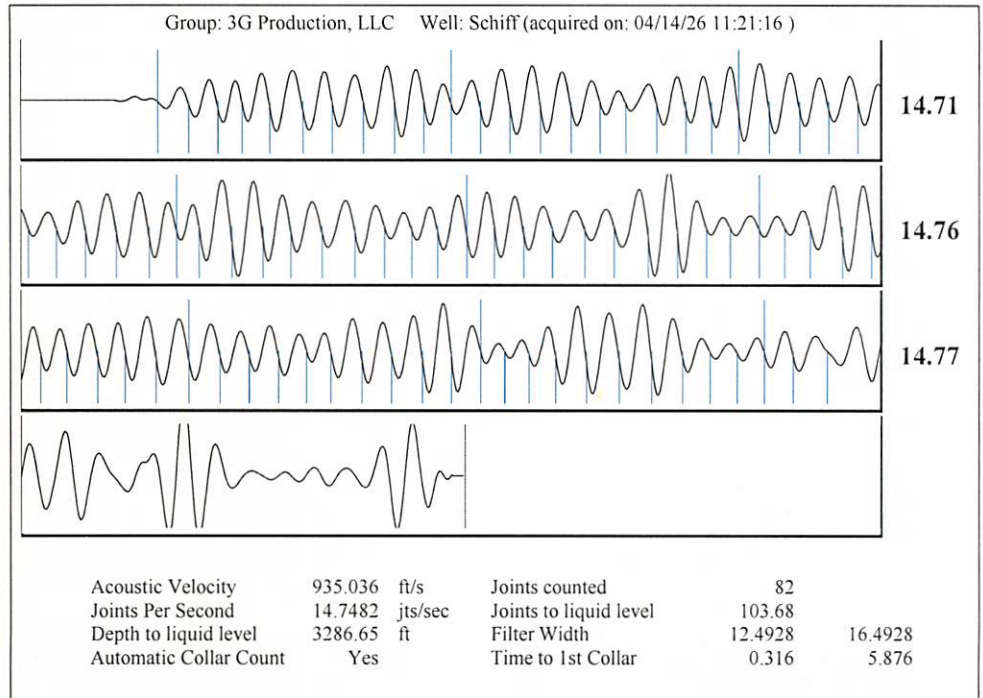
Mail to the Appropriate KCC Conservation Office:

Table with 3 columns: District Office #, Address, Phone. Rows 1-4.



Group: 3G Production, LLC Well: Schiff (acquired on: 04/14/26 11:21:16)

| | | | |
|--------------------------------------|------------------|-------------------------------|------------------|
| Production | Potential | Casing Pressure | Producing |
| Oil - *- | - *- BBL/D | 199.8 psi (g) | |
| Water - *- | - *- BBL/D | Casing Pressure Buildup | |
| Gas - *- | - *- Mscf/D | 0.0 psi | |
| IPR Method | Vogel | 0.75 min | Annular Gas Flow |
| PBHP/SBHP | - *- | Gas/Liquid Interface Pressure | 0 Mscf/D |
| Production Efficiency | 0.0 | 227.0 psi (g) | % Liquid |
| | | Liquid Level Depth | 98 % |
| Oil 40 deg.API | | 3286.65 ft | |
| Water 1.05 Sp.Gr.H2O | | Pump Intake Depth | |
| Gas 1.00 Sp.Gr.AIR | | 4371.00 ft | |
| Acoustic Velocity | 935.036 ft/s | Formation Depth | |
| | | 4360.00 ft | |
| Formation Submergence | | | |
| Total Gaseous Liquid Column HT (TVD) | 1084 ft | Pump Intake | 577.7 psi (g) |
| Equivalent Gas Free Liquid HT (TVD) | 1063 ft | Producing BHP | 574.2 psi (g) |
| Acoustic Test | | Static BHP | - * - psi (g) |



Conservation Division
District Office No. 1
210 E. Frontview, Suite A
Dodge City, KS 67801



Phone: 620-682-7933
<http://kcc.ks.gov/>

Andrew J. French, Chairperson
Dwight D. Keen, Commissioner
Annie Kuether, Commissioner

Laura Kelly, Governor

04/15/2026

Kenneth C Gates
3G Production, LLC
10387 NE SR 61
PO BOX 847
PRATT, KS 67124-0847

Re: Temporary Abandonment
API 15-007-20777-00-00
SCHIFF 1
SE/4 Sec.25-32S-10W
Barber County, Kansas

Dear Kenneth C Gates:

"Your temporary abandonment (TA) application for the well listed above has been approved. In accordance with K.A.R. 82-3-111 the TA status of this well will expire 04/15/2027.

- * If you return this well to service or plug it, please notify the District Office.
- * If you sell this well you are required to file a Transfer of Operator form, T-1.
- * If the well will remain temporarily abandoned, you must submit a new TA application, CP-111, before 04/15/2027.

You may contact me at the number above if you have questions.

Very truly yours,

Michael Maier"