

KANSAS CORPORATION COMMISSION
OIL & GAS CONSERVATION DIVISION

TEMPORARY ABANDONMENT WELL APPLICATION

OPERATOR: License#
Name:
Address 1:
Address 2:
City: State: Zip:
Contact Person:
Phone:
Contact Person Email:
Field Contact Person:
Field Contact Person Phone:

API No. 15-
Spot Description:
Sec. Twp. S. R.
GPS Location: Lat: Long:
Datum: NAD27 NAD83 WGS84
County: Elevation:
Lease Name: Well #:
Well Type: Oil Gas OG WSW Other:
SWD Permit #: ENHR Permit #:
Gas Storage Permit #:
Spud Date: Date Shut-In:

Table with 7 columns: Conductor, Surface, Production, Intermediate, Liner, Tubing. Rows include Size, Setting Depth, Amount of Cement, Top of Cement, Bottom of Cement.

Casing Fluid Level from Surface: How Determined? Date:
Casing Squeeze(s): to w / sacks of cement, to w / sacks of cement. Date:
Do you have a valid Oil & Gas Lease? Yes No
Depth and Type: Junk in Hole at Tools in Hole at Casing Leaks: Yes No Depth of casing leak(s):
Type Completion: ALT. I ALT. II Depth of: DV Tool: w / sacks of cement Port Collar: w / sack of cement
Packer Type: Size: Inch Set at: Feet
Total Depth: Plug Back Depth: Plug Back Method:

Geological Data:

Table with 4 columns: Formation Name, Formation Top, Formation Base, Completion Information. Rows 1 and 2.

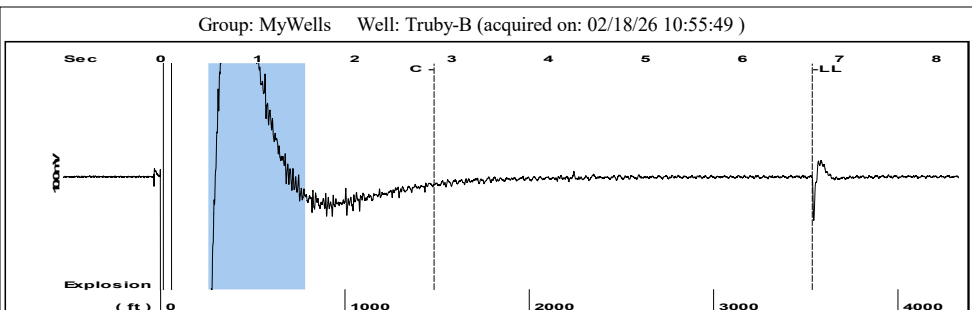
UNDER PENALTY OF PERJURY I HEREBY ATTEST THAT THE INFORMATION CONTAINED HEREIN IS TRUE AND CORRECT TO THE BEST OF MY KNOWLEDGE

Submitted Electronically

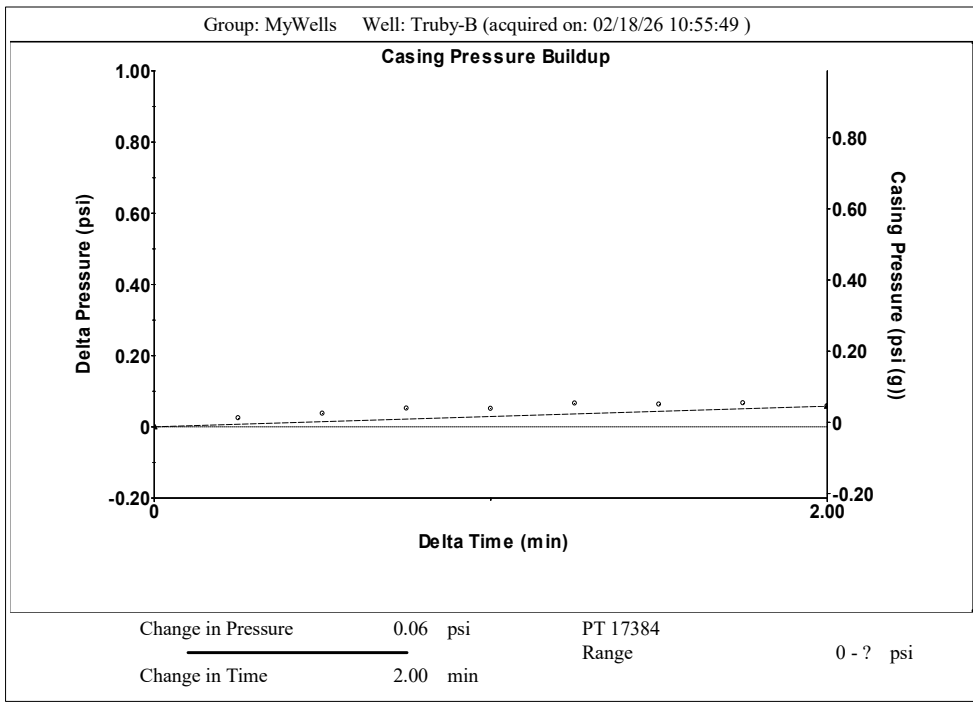
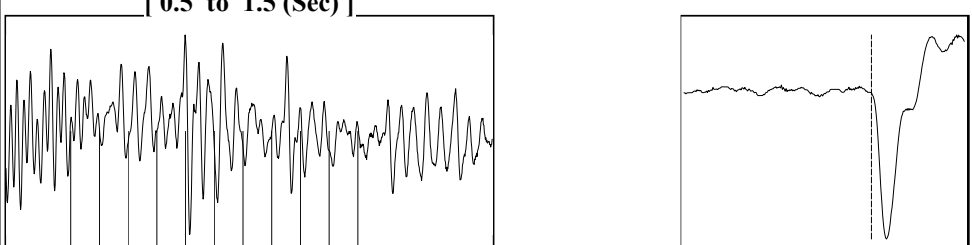
Do NOT Write in This Space - KCC USE ONLY
Date Tested: Results: Date Plugged: Date Repaired: Date Put Back in Service:
Review Completed by: Comments:
TA Approved: Yes Denied Date:

Mail to the Appropriate KCC Conservation Office:

Table with 2 columns: Office Address, Phone. Rows for District Office #1, #2, #3, #4.

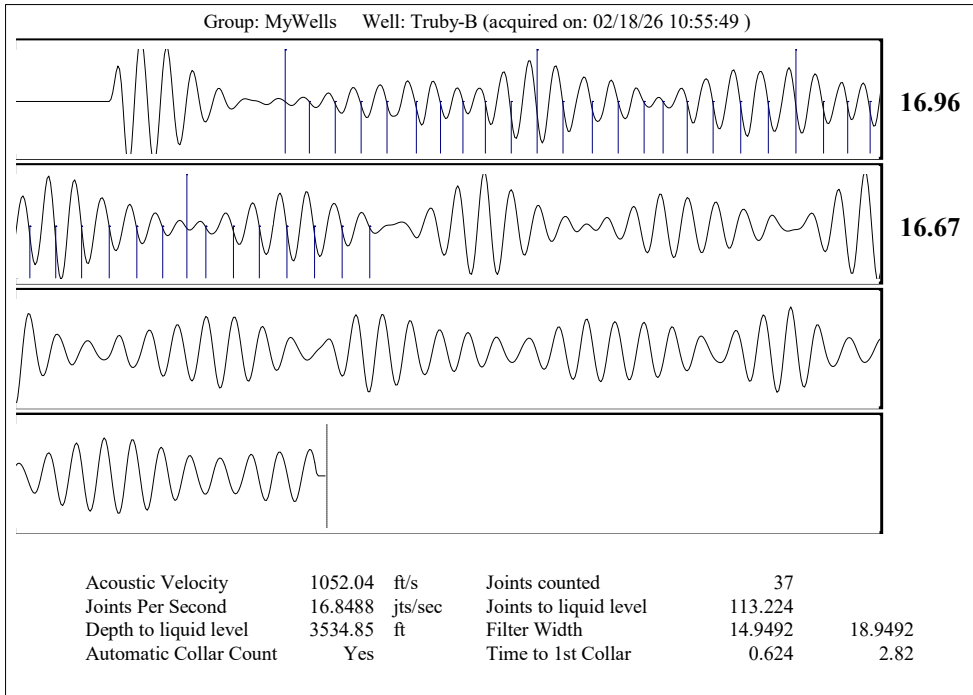


Filter Type High Pass Automatic Collar Count Yes Time 6.72 sec
 Manual Acoustic Veloc 1058.31 ft/s Manual JTS/sec 16.9492 Joints 113.224 Jts
 Depth 3534.85 ft



Group: MyWells Well: Truby-B (acquired on: 02/18/26 10:55:49)

Production	Potential	Casing Pressure		Producing
Current		-0.0 psi (g)		Annular Gas Flow
Oil - *-	- *- BBL/D	Casing Pressure Buildup		2.00 min
Water - *-	- *- BBL/D	Gas/Liquid Interface Pressure		1.7 psi (g)
Gas - *-	- *- Mscf/D	Liquid Level Depth	3534.85 ft	% Liquid
IPR Method	Vogel	Pump Intake Depth	4505.00 ft	97 %
PBHP/SBHP	- *-	Formation Depth	4505.00 ft	
Production Efficiency	0.0			
Oil 40 deg.API				Pump Intake
Water 1.05 Sp.Gr.H2O				320.3 psi (g)
Gas 0.93 Sp.Gr.AIR				Producing BHP
Acoustic Velocity 1052.04 ft/s				320.3 psi (g)
				Static BHP
				- *- psi (g)
Formation Submergence				
Total Gaseous Liquid Column HT (TVD)	970 ft			
Equivalent Gas Free Liquid HT (TVD)	939 ft			
Acoustic Test				



Conservation Division
District Office No. 2
3450 N. Rock Road
Building 600, Suite 601
Wichita, KS 67226



Phone: 316-337-7400
<http://kcc.ks.gov/>

Andrew J. French, Chairperson
Dwight D. Keen, Commissioner
Annie Kuether, Commissioner

Laura Kelly, Governor

04/15/2026

Scott Lawson
Oil Producers, Inc. of Kansas
1710 WATERFRONT PKWY
WICHITA, KS 67206-6603

Re: Temporary Abandonment
API 15-077-20138-00-01
TRUBY B OWWO 1
NE/4 Sec.02-33S-06W
Harper County, Kansas

Dear Scott Lawson:

Your application for Temporary Abandonment (TA) for the above-listed well is denied for the following reasons(s):

Shut-in Over 10 years

Pursuant to K.A.R. 82-3-111, the well must be plugged, or returned to service, or obtain temporary abandonment status by 05/15/2026.

This deadline does NOT override any compliance deadline given to you in any Commission Order.

You may contact me if you have any questions.

Sincerely,
Neil Lake - ECRS
KCC DISTRICT 2