

KANSAS CORPORATION COMMISSION
OIL & GAS CONSERVATION DIVISION

TEMPORARY ABANDONMENT WELL APPLICATION

OPERATOR: License#
Name:
Address 1:
Address 2:
City: State: Zip:
Contact Person:
Phone:
Contact Person Email:
Field Contact Person:
Field Contact Person Phone:

API No. 15-
Spot Description:
Sec. Twp. S. R.
GPS Location: Lat, Long
Datum: NAD27, NAD83, WGS84
County: Elevation:
Lease Name: Well #:
Well Type: Oil, Gas, OG, WSW, Other
SWD Permit #: ENHR Permit #:
Gas Storage Permit #:
Spud Date: Date Shut-In:

Table with 7 columns: Conductor, Surface, Production, Intermediate, Liner, Tubing. Rows include Size, Setting Depth, Amount of Cement, Top of Cement, Bottom of Cement.

Casing Fluid Level from Surface: How Determined? Date:
Casing Squeeze(s): to w / sacks of cement, to w / sacks of cement. Date:
Do you have a valid Oil & Gas Lease? Yes No
Depth and Type: Junk in Hole at Tools in Hole at Casing Leaks: Yes No Depth of casing leak(s):
Type Completion: ALT. I ALT. II Depth of: DV Tool: w / sacks of cement Port Collar: w / sack of cement
Packer Type: Size: Inch Set at: Feet
Total Depth: Plug Back Depth: Plug Back Method:

Geological Data:

Table with 4 columns: Formation Name, Formation Top, Formation Base, Completion Information. Rows 1 and 2.

UNDER PENALTY OF PERJURY I HEREBY ATTEST THAT THE INFORMATION CONTAINED HEREIN IS TRUE AND CORRECT TO THE BEST OF MY KNOWLEDGE

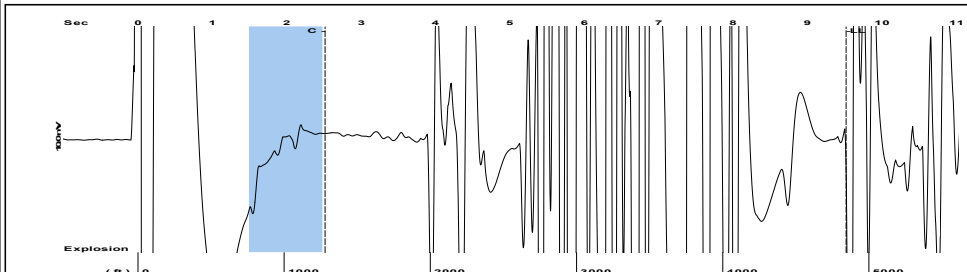
Submitted Electronically

Do NOT Write in This Space - KCC USE ONLY
Date Tested: Results: Date Plugged: Date Repaired: Date Put Back in Service:
Review Completed by: Comments:
TA Approved: Yes Denied Date:

Mail to the Appropriate KCC Conservation Office:

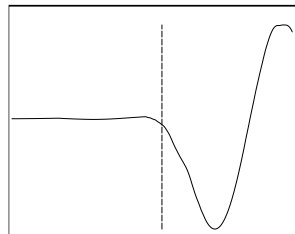
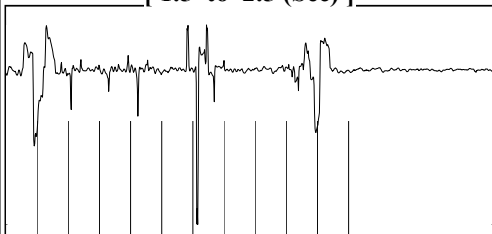
Table with 3 columns: District Office #, Address, Phone. Rows 1-4.

Group: MyWells Well: BLEESS-MCFADDIN 7-1 (acquired on: 04/14/26 16:23:44)



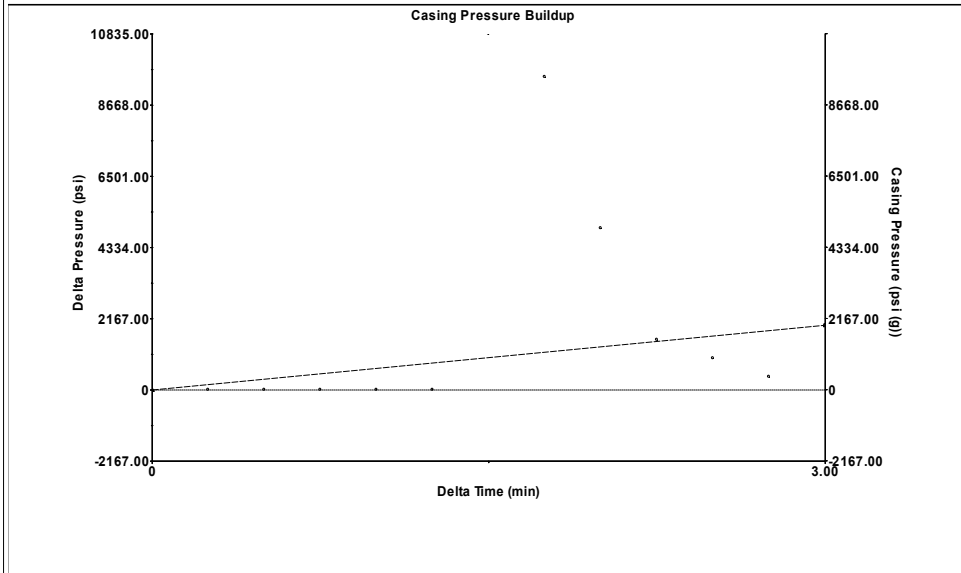
Filter Type High Pass Automatic Collar Count Yes Time 9.522 sec
 Manual Acoustic Veloc 990.625 ft/s Manual JTS/sec 15.625 Joints 152.802 Jts
 Depth 4843.83 ft

[1.5 to 2.5 (Sec)]



Analysis Method: Automatic

Group: MyWells Well: BLEESS-MCFADDIN 7-1 (acquired on: 04/14/26 16:23:44)

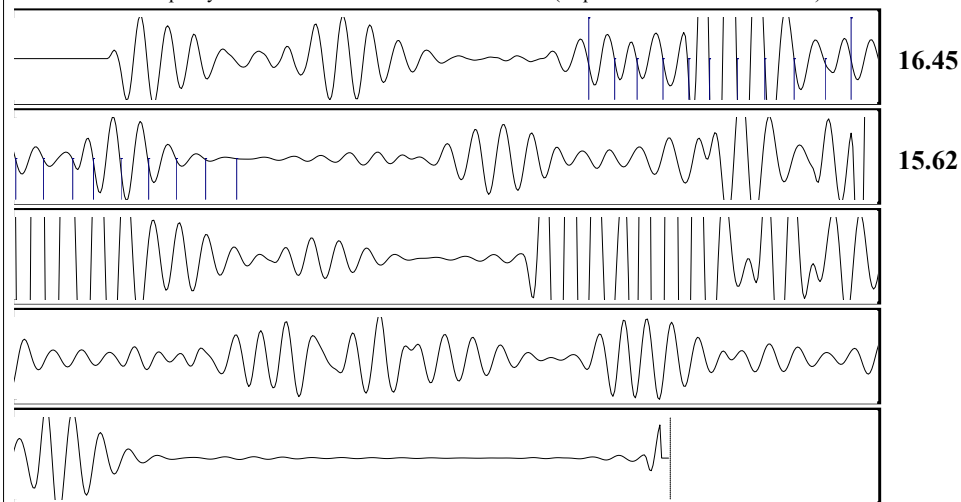


Change in Pressure 1968.71 psi PT12098
 Change in Time 3.00 min Range 0 - ? psi

Group: MyWells Well: BLEESS-MCFADDIN 7-1 (acquired on: 04/14/26 16:23:44)

Production		Potential		Casing Pressure		Producing	
Oil	- * -	- * -	BBL/D	-11.0	psi (g)		
Water	- * -	- * -	BBL/D				
Gas	- * -	- * -	Mscf/D	1968.7	psi		
				3.00	min		
IPR Method		Vogel		Gas/Liquid Interface Pressure			
PBHP/SBHP		- * -		- * -	psi (g)		
Production Efficiency		0.0					
Oil	40	deg.API		Liquid Level Depth			
Water	1.05	Sp.Gr.H2O		4843.83	ft		
Gas	0.97	Sp.Gr.AIR		Pump Intake Depth			
				- * -	ft		
Acoustic Velocity	1017.4	ft/s		Formation Depth			
				6500.00	ft		
Formation Submergence							
Total Gaseous Liquid Column HT (TVD)				- * -	ft		
Equivalent Gas Free Liquid HT (TVD)				- * -	ft		
Acoustic Test							

Group: MyWells Well: BLEESS-MCFADDIN 7-1 (acquired on: 04/14/26 16:23:44)



Acoustic Velocity 1017.4 ft/s Joints counted 19
 Joints Per Second 16.0473 jts/sec Joints to liquid level 152.802
 Depth to liquid level 4843.83 ft Filter Width 13.625 17.625
 Automatic Collar Count Yes Time to 1st Collar 1.332 2.516

Conservation Division
District Office No. 1
210 E. Frontview, Suite A
Dodge City, KS 67801



Phone: 620-682-7933
<http://kcc.ks.gov/>

Andrew J. French, Chairperson
Dwight D. Keen, Commissioner
Annie Kuether, Commissioner

Laura Kelly, Governor

04/22/2026

Jorge Torres
Palmer Oil, Inc.
3118 N. CUMMINGS RD.
PO BOX 399
GARDEN CITY, KS 67846-0399

Re: Temporary Abandonment
API 15-129-21852-00-00
BLEESS-MCFADDIN 7 #1
NW/4 Sec.07-33S-39W
Morton County, Kansas

Dear Jorge Torres:

"Your temporary abandonment (TA) application for the well listed above has been approved. In accordance with K.A.R. 82-3-111 the TA status of this well will expire 04/22/2027.

- * If you return this well to service or plug it, please notify the District Office.
- * If you sell this well you are required to file a Transfer of Operator form, T-1.
- * If the well will remain temporarily abandoned, you must submit a new TA application, CP-111, before 04/22/2027.

You may contact me at the number above if you have questions.

Very truly yours,

Michael Maier"