

KANSAS CORPORATION COMMISSION
OIL & GAS CONSERVATION DIVISION

Form must be Typed
Form must be signed

TEMPORARY ABANDONMENT WELL APPLICATION

All blanks must be complete

OPERATOR: License#
Name:
Address 1:
Address 2:
City: State: Zip:
Contact Person:
Phone:
Contact Person Email:
Field Contact Person:
Field Contact Person Phone:

API No. 15-
Spot Description:
Sec. Twp. S. R.
GPS Location: Lat: Long:
Datum: NAD27 NAD83 WGS84
County: Elevation:
Lease Name: Well #:
Well Type: Oil Gas OG WSW Other:
SWD Permit #: ENHR Permit #:
Gas Storage Permit #:
Spud Date: Date Shut-In:

Table with 7 columns: Conductor, Surface, Production, Intermediate, Liner, Tubing. Rows include Size, Setting Depth, Amount of Cement, Top of Cement, Bottom of Cement.

Casing Fluid Level from Surface: How Determined? Date:
Casing Squeeze(s): to w / sacks of cement, to w / sacks of cement. Date:
Do you have a valid Oil & Gas Lease? Yes No
Depth and Type: Junk in Hole at Tools in Hole at Casing Leaks: Yes No Depth of casing leak(s):
Type Completion: ALT. I ALT. II Depth of: DV Tool: w / sacks of cement Port Collar: w / sack of cement
Packer Type: Size: Inch Set at: Feet
Total Depth: Plug Back Depth: Plug Back Method:

Geological Data:

Table with 4 columns: Formation Name, Formation Top, Formation Base, Completion Information. Rows 1 and 2.

UNDER PENALTY OF PERJURY I HEREBY ATTEST THAT THE INFORMATION CONTAINED HEREIN IS TRUE AND CORRECT TO THE BEST OF MY KNOWLEDGE

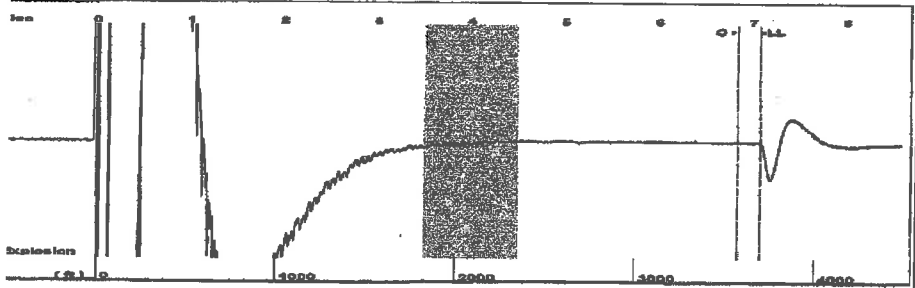
Submitted Electronically

Do NOT Write in This Space - KCC USE ONLY
Date Tested: Results: Date Plugged: Date Repaired: Date Put Back in Service:
Review Completed by: Comments:
TA Approved: Yes Denied Date:

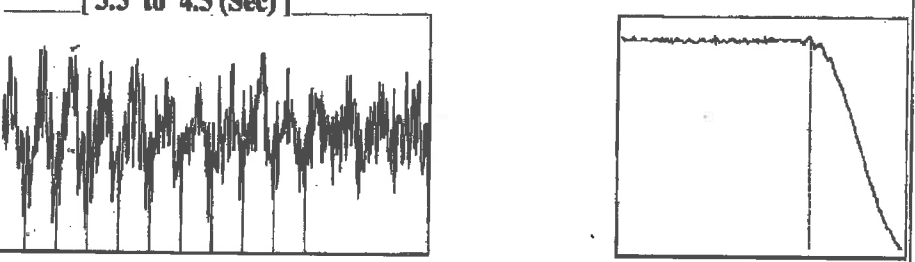
Mail to the Appropriate KCC Conservation Office:

Table with 2 columns: Office Address, Phone. Rows for District Office #1, #2, #3, #4.

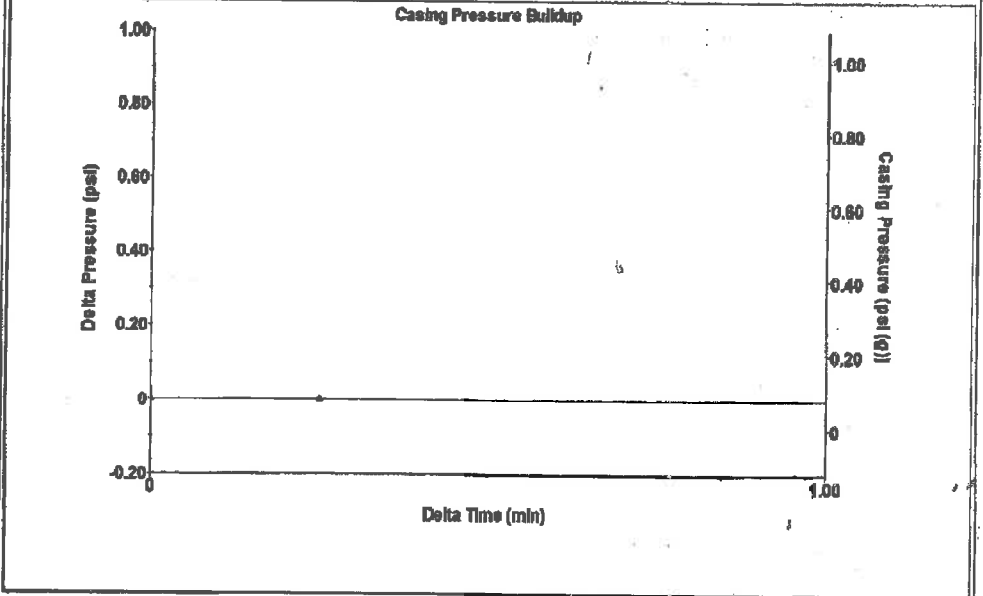
Group: Belpre Well: Schartz 6-12 (acquired on: 04/24/26 11:48:39)



Type High Pass Automatic Collar Count Yes Time 7.074 sec
 Acoustic Velocity 1014.44 ft/s Manual JTS/sec 15.6986 Joints 114.375 Jts
 Depth 3695.46 ft



Group: Belpre Well: Schartz 6-12 (acquired on: 04/24/26 11:48:39)



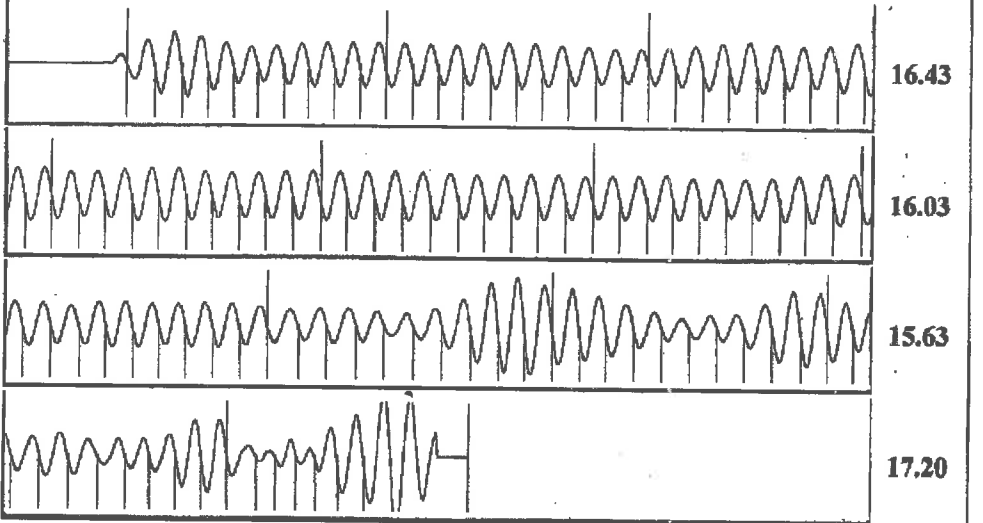
Change in Pressure -0.00 psi PT13440
 Range 0 - ? psi
 Change in Time 0.25 min

Analysis Method: Automatic

Group: Belpre Well: Schartz 6-12 (acquired on: 04/24/26 11:48:39)

<p>action Current Potential</p> <p>-*- BBL/D -*- BBL/D -*- Mscf/D</p> <p>Method P/SBHP action Efficiency</p> <p>40 deg.AFI r 1.05 Sp.Gr.H2O 0.94 Sp.Gr.AIR</p> <p>Acoustic Velocity 1044.8 ft/s</p> <p>ation Submergence Gaseous Liquid Column HT (TVD) 635 ft valent Gas Free Liquid HT (TVD) 635 ft</p> <p>Acoustic Test</p>	<p>Casing Pressure 0.1 psi (g) Casing Pressure Buildup -0.0 psi 0.25 min Gas/Liquid Interface Pressure 1.9 psi (g) Liquid Level Depth 3695.46 ft Pump Intake Depth 4330.00 ft Formation Depth 4302.00 ft</p>	<p>Producing</p> <p>Annular Gas Flow 0 Mscf/D % Liquid 100 %</p> <p>Pump Intake 218.0 psi (g) Producing BHP 208.6 psi (g) Static BHP -*- psi (g)</p>
--	--	--

Group: Belpre Well: Schartz 6-12 (acquired on: 04/24/26 11:48:39)



Acoustic Velocity	1044.8 ft/s	Joints counted	106
Joints Per Second	16.1684 jts/sec	Joints to liquid level	114.375
Depth to liquid level	3695.46 ft	Filter Width	13.6986
Automatic Collar Count	Yes	Time to 1st Collar	0.276
			6.832

Conservation Division
District Office No. 1
210 E. Frontview, Suite A
Dodge City, KS 67801



Phone: 620-682-7933
<http://kcc.ks.gov/>

Andrew J. French, Chairperson
Dwight D. Keen, Commissioner
Annie Kuether, Commissioner

Laura Kelly, Governor

04/29/2026

Franklin R. Greenbaum
F. G. Holl Company L.L.C.
9431 E CENTRAL STE 100
WICHITA, KS 67206-2563

Re: Temporary Abandonment
API 15-047-21102-00-00
SCHARTZ 6-12
SE/4 Sec.12-24S-17W
Edwards County, Kansas

Dear Franklin R. Greenbaum:

"Your temporary abandonment (TA) application for the well listed above has been approved. In accordance with K.A.R. 82-3-111 the TA status of this well will expire 04/29/2027.

- * If you return this well to service or plug it, please notify the District Office.
- * If you sell this well you are required to file a Transfer of Operator form, T-1.
- * If the well will remain temporarily abandoned, you must submit a new TA application, CP-111, before 04/29/2027.

You may contact me at the number above if you have questions.

Very truly yours,

Michael Maier"