

KANSAS CORPORATION COMMISSION
OIL & GAS CONSERVATION DIVISION

TEMPORARY ABANDONMENT WELL APPLICATION

OPERATOR: License#
Name:
Address 1:
Address 2:
City: State: Zip:
Contact Person:
Phone:
Contact Person Email:
Field Contact Person:
Field Contact Person Phone:

API No. 15-
Spot Description:
Sec. Twp. S. R.
GPS Location: Lat, Long
Datum: NAD27, NAD83, WGS84
County: Elevation:
Lease Name: Well #:
Well Type: Oil, Gas, OG, WSW, Other
SWD Permit #: ENHR Permit #:
Gas Storage Permit #:
Spud Date: Date Shut-In:

Table with 7 columns: Conductor, Surface, Production, Intermediate, Liner, Tubing. Rows include Size, Setting Depth, Amount of Cement, Top of Cement, Bottom of Cement.

Casing Fluid Level from Surface: How Determined? Date:
Casing Squeeze(s): to w / sacks of cement, to w / sacks of cement. Date:
Do you have a valid Oil & Gas Lease? Yes No
Depth and Type: Junk in Hole at Tools in Hole at Casing Leaks: Yes No Depth of casing leak(s):
Type Completion: ALT. I ALT. II Depth of: DV Tool: w / sacks of cement Port Collar: w / sack of cement
Packer Type: Size: Inch Set at: Feet
Total Depth: Plug Back Depth: Plug Back Method:

Geological Data:

Table with 4 columns: Formation Name, Formation Top, Formation Base, Completion Information. Rows 1 and 2.

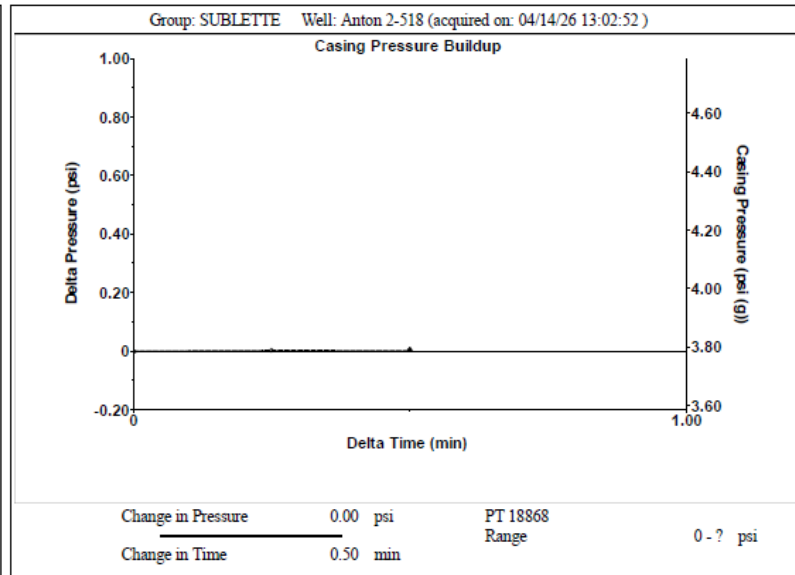
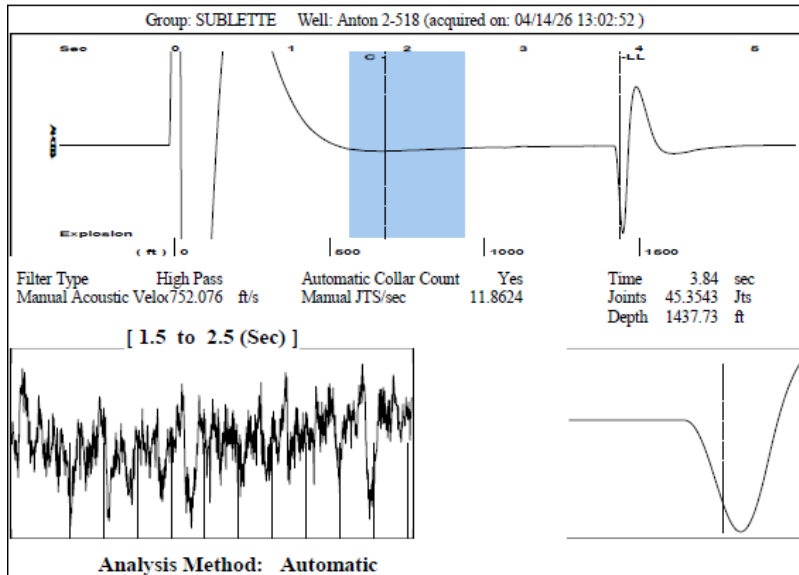
UNDER PENALTY OF PERJURY I HEREBY ATTEST THAT THE INFORMATION CONTAINED HEREIN IS TRUE AND CORRECT TO THE BEST OF MY KNOWLEDGE

Submitted Electronically

Do NOT Write in This Space - KCC USE ONLY
Date Tested: Results: Date Plugged: Date Repaired: Date Put Back in Service:
Review Completed by: Comments:
TA Approved: Yes Denied Date:

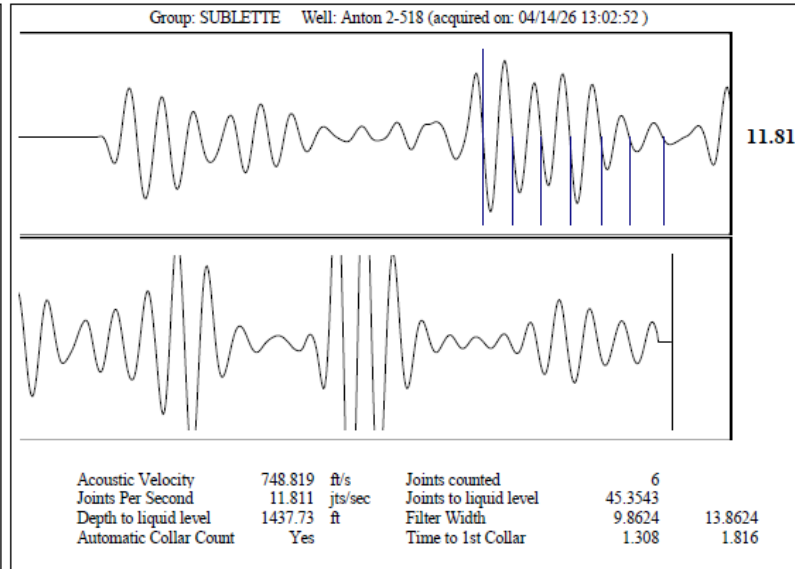
Mail to the Appropriate KCC Conservation Office:

Table with 3 columns: District Office #, Address, Phone. Rows 1-4.



Group: SUBLETTE Well: Anton 2-518 (acquired on: 04/14/26 13:02:52)

Production		Casing Pressure		Producing
Current	Potential	3.8	psi (g)	
Oil -*-	-*- BBL/D	Casing Pressure Buildup	0.004 psi	
Water -*-	-*- BBL/D	Gas/Liquid Interface Pressure	0.50 min	Annular Gas Flow
Gas -*-	-*- Mscf/D	Liquid Level Depth	4.9 psi (g)	0 Mscf/D
IPR Method	Vogel	Pump Intake Depth		% Liquid
PBHP/SBHP	-*-	5374.00 ft		100 %
Production Efficiency	0.0	Formation Depth		
		5336.00 ft		
Oil 40 deg.API				Pump Intake
Water 1.05 Sp.Gr.H2O				1253.8 psi (g)
Gas 1.20 Sp.Gr.AIR				Producing BHP
Acoustic Velocity 748.819 ft/s				1242.9 psi (g)
				Static BHP
				-*- psi (g)
Formation Submergence				
Total Gaseous Liquid Column HT (TVD)	3936 ft			
Equivalent Gas Free Liquid HT (TVD)	3936 ft			
4/14/26				



Conservation Division
District Office No. 1
210 E. Frontview, Suite A
Dodge City, KS 67801



Phone: 620-682-7933
<http://kcc.ks.gov/>

Andrew J. French, Chairperson
Dwight D. Keen, Commissioner
Annie Kuether, Commissioner

Laura Kelly, Governor

04/29/2026

NIKO WELCH
Eiger Operating Company, LLC
3811 TURTLE CREEK BLVD SUITE 975
DALLAS, TX 75219-4784

Re: Temporary Abandonment
API 15-081-21218-00-01
ANTON 2-518
NW/4 Sec.18-30S-33W
Haskell County, Kansas

Dear NIKO WELCH:

"Your temporary abandonment (TA) application for the well listed above has been approved. In accordance with K.A.R. 82-3-111 the TA status of this well will expire 04/29/2027.

- * If you return this well to service or plug it, please notify the District Office.
- * If you sell this well you are required to file a Transfer of Operator form, T-1.
- * If the well will remain temporarily abandoned, you must submit a new TA application, CP-111, before 04/29/2027.

You may contact me at the number above if you have questions.

Very truly yours,

Michael Maier"